

# People and Families Scrutiny Committee

<b>10:30</b>	<b>Thursday, 12 November 2015</b>	<b>Committee Room 1, County Hall, Chelmsford, Essex</b>
--------------	---------------------------------------	---

## **Quorum: 4**

### **Membership**

Councillor I Grundy  
Councillor D Blackwell  
Councillor R Boyce  
Councillor J Chandler  
Councillor M Danvers  
Councillor K Gibbs  
Councillor A Goggin  
Councillor C Guglielmi  
Councillor T Higgins  
Councillor P Honeywood  
Councillor R Howard  
Councillor A Jackson  
Councillor M McEwen  
Councillor A Wood

Chairman

### **Non-elected Members**

Richard Carson  
Marian Uzzell

### **For information about the meeting please ask for:**

Robert Fox, Scrutiny Officer

Matthew Waldie, Committee Officer

**Telephone:** 033301 34583

**Email:** [matthew.waldie@essex.gov.uk](mailto:matthew.waldie@essex.gov.uk)

**[www.essex.gov.uk/scrutiny](http://www.essex.gov.uk/scrutiny)**



Essex County Council

## **Essex County Council and Committees Information**

All Council and Committee Meetings are held in public unless the business is exempt in accordance with the requirements of the Local Government Act 1972.

Most meetings are held at County Hall, Chelmsford, CM1 1LX. A map and directions to County Hall can be found at the following address on the Council's website:  
<http://www.essex.gov.uk/Your-Council/Local-Government-Essex/Pages/Visit-County-Hall.aspx>

There is ramped access to the building for wheelchair users and people with mobility disabilities.

The Council Chamber and Committee Rooms are accessible by lift and are located on the first and second floors of County Hall.

If you have a need for documents in the following formats, large print, Braille, on disk or in alternative languages and easy read please contact the Committee Officer before the meeting takes place. If you have specific access requirements such as access to induction loops, a signer, level access or information in Braille please inform the Committee Officer before the meeting takes place. For any further information contact the Committee Officer.

Induction loop facilities are available in most Meeting Rooms. Specialist head sets are available from Duke Street and E Block Receptions.

The agenda is also available on the Essex County Council website, [www.essex.gov.uk](http://www.essex.gov.uk). From the Home Page, click on 'Your Council', then on 'Meetings and Agendas'. Finally, select the relevant committee from the calendar of meetings.

Please note that an audio recording may be made of the meeting – at the start of the meeting the Chairman will confirm if all or part of the meeting is being recorded.

## **Part 1**

(During consideration of these items the meeting is likely to be open to the press and public)

		<b>Pages</b>
<b>1</b>	<b>Apologies for Absence and Substitution Notices</b>	
<b>2</b>	<b>Declarations of Interest</b> To note any declarations of interest to be made by Members in accordance with the Members' Code of Conduct	
<b>3</b>	<b>Questions from the Public</b> A period of up to 15 minutes will be allowed for members of the public to ask questions or make representations on any item on the agenda for this meeting. On arrival, and before the start of the meeting, please register with the Committee Officer.	
<b>4</b>	<b>Child Sexual Exploitation</b> To receive an oral update from the Cabinet Member. Cllr Dick Madden, Cabinet Member for Adults and Children, will be in attendance.	
<b>5</b>	<b>Essex Youth Service Redesign</b> To receive an update on the changes to the Youth Service from the Cabinet Member. Cllr Ray Gooding, Cabinet Member for Education and Lifelong Learning, and Michael O'Brien, Head of Commissioning, Education and Lifelong Learning, will be in attendance. Report PAF/21/15 attached.	<b>5 - 10</b>
<b>6</b>	<b>Children's Centres and Healthy Child Programme Consultation</b> To receive an update on the consultation programme. Ms Stav Yiannou, Head of Commissioning, Early Years and Childcare, will be in attendance. Report PAF/22/15 attached.	<b>11 - 14</b>
<b>7</b>	<b>Member Visits to Residential Homes</b> To receive an oral update from the Deputy Cabinet Member. Cllr Malcolm Maddocks, Deputy Cabinet Member for Adults and Children, will be in attendance.	

- 8 Scrutiny recommendations tracker and work programme** **15 - 38**  
To note developments and work outstanding in the Committee's work programme. PAF/23/15 attached
- 9 Date of Next Meeting**  
To note that the next meeting will be held on Thursday 14 January 2016 at 10.30am.
- 10 Urgent Business**  
To consider any matter which in the opinion of the Chairman should be considered in public by reason of special circumstances (to be specified) as a matter of urgency.

### **Exempt Items**

(During consideration of these items the meeting is not likely to be open to the press and public)

To consider whether the press and public should be excluded from the meeting during consideration of an agenda item on the grounds that it involves the likely disclosure of exempt information as specified in Part I of Schedule 12A of the Local Government Act 1972 or it being confidential for the purposes of Section 100A(2) of that Act.

In each case, Members are asked to decide whether, in all the circumstances, the public interest in maintaining the exemption (and discussing the matter in private) outweighs the public interest in disclosing the information.

- 11 Urgent Exempt Business**  
To consider in private any other matter which in the opinion of the Chairman should be considered by reason of special circumstances (to be specified) as a matter of urgency.

		AGENDA ITEM 5
		PAF/21/15
Committee:	People and Families Scrutiny Committee	
Date:	12 November 2015	
<u>Essex Youth Service Progress update November 2015</u>		
Enquiries to:	Michael O'Brien Head of Commissioning Education & Lifelong Learning <a href="mailto:michael.obrien@essex.gov.uk">michael.obrien@essex.gov.uk</a>	

## Background

1. The purpose of this report is to further update Members on the progress the Youth Service has made since the presentation of the Report to Cabinet on 25 February 2014.

In that report Councillor Gooding shared proposals for the new operating model and how from 2014/15 onwards the proposed service budget will be allocated. This brief report explains the progress so far.

**2. Senior Leadership Team (SLT)** The Youth Service SLT is in place and is working effectively.

**3. Service Redesign** The redesign is complete and is operating successfully; although we are still developing we have seen massive improvement in staff morale and a significant reduction in sickness and absence.

<b>Date</b>	<b>All Absence</b>	<b>Short Term</b>	<b>10 Days</b>	<b>Long Term</b>
Nov-14	203	92	93	6
Sep-15	122	28	25	0

**4. Youth Work Outcomes** The service launched the new outcomes framework in June 2014; along with a new utility to support community groups keep track of their members and achievements. This is the first period of reporting using Profile and RunAClub (April to August 2015).

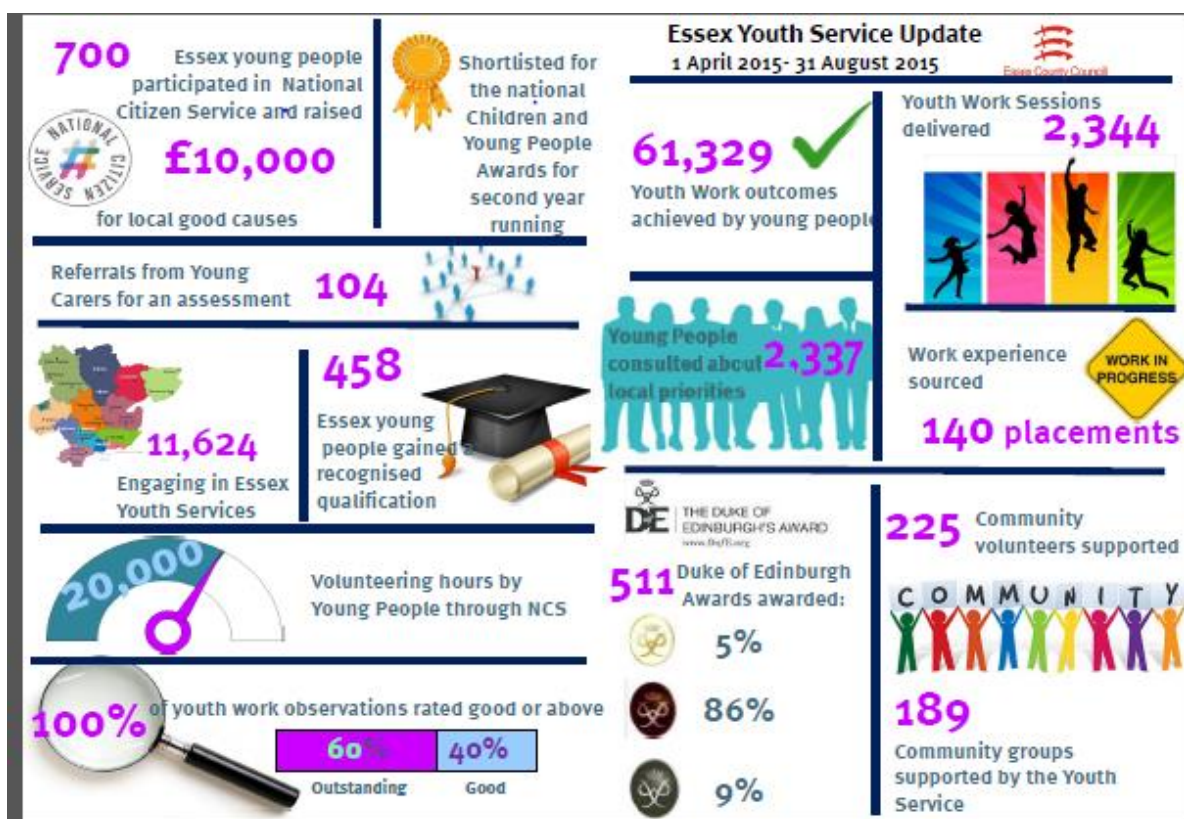
## Youth work Update April 2015- September 2015

This visual shows the key achievements so far this year:

- 61,329 youth work outcomes achieved by young people, this represents over a 200% increase from this time last year
- 2,344 youth work sessions delivered in Essex
- 189 Community Youth Clubs in partnership and supported by EYS
- 225 community volunteers being supported to work effectively with young people

Other achievements this year include:

- 62 volunteers attended youth work training
- 73 completed safeguarding training
- 2020 young people and families attended our NCS Summer 2015 Graduation ceremonies at Essex University



5. **Duke of Edinburgh Award (D of E).** We have now successfully negotiated a delivery model for Essex that will see an expansion of the D of E and includes a much closer working relationship with colleagues in Windsor

6. **Young Carers** Provision is procured across the county with a long term strategy being developed to ensure a better provision.

- 7. Youth Strategy Groups (YSGs)** The groups have all identified their outcomes for this year and are at a different stage of development although they are proving successful across the county.
- 8. National Citizen Service (NCS)** This continues to be a successful flagship programme with an announcement expected in CSR.
- 10. Young Inspectors** Several groups have been trained to inspect services for young people with further groups being trained.

### **Commissioning through Community Capacity Building: A Case Study**

Low cost, no cost commissioning

#### **Background**

The Youth Service in Essex had been a traditional and well-resourced service, employing high volumes of skilled youth and community workers delivering youth services across all localities in Essex. The facilities and estate are in good order and historically been for the sole use of the service. The service was well respected within the council and achieved Good Ofsted ratings. Limited genuine partnership working with the voluntary sector existed with the service mainly providing some funding to groups such as the Essex Boys and Girls Clubs and Young Farmers.

#### **Objectives**

Changes in thinking across the sector were signalling that new ways of delivering outcomes for young people needed to be considered. The strengthening voluntary sector and young people themselves were starting to ask for a greater say in services that were provided for them.

2010 saw a significant change in climate within local government when financial austerity really began to take hold. The Schools Children and Families Directorate faced a £48m funding cut with many grants being cut in-year. As a result the Youth Service faced a £6.5m funding reduction from £12.5m to £6m. With employee costs accounting for a significant share of the budget, the service had to fundamentally re-think its offer and hence the service began its commissioning journey.

ECC was still in the early stages of developing its approach to becoming a commissioning authority. The service lead began to think about the future of the service with the focus on continuing to achieve high quality outcomes in an environment of ever decreasing resources. The service began to engage directly with service users and the community to understand what was important to them. In general they wanted places for young people to go, for young people to meet their friends, the feedback also revealed that they were indifferent about who delivered this service as long as good quality provision was organised by good quality youth workers. The young people were unaware of the difference between an LA Youth Worker, Volunteer or voluntary sector youth worker.

The only way to sustain provision with limited funding and to give young people a genuine voice in the services they wanted was to stimulate and support the community to deliver its own services. The emphasis was not about protecting the service through austere times, it was about protecting the outcomes that youth work supports. A model of Community Development was developed specific to meet the



needs of Essex, “**Commissioning through Community Capacity Building**”.

Community development is a way of working with communities using the skills of a youth worker. Its key purpose is to build a communities capacity to support its young people based on justice, equality and mutual respect.

## **Implementation**

The Essex Youth Service Community Development model involves changing the relationships between our young people, their families and people in positions of power, so that everyone can take part in the issues that affect their lives. It starts from the principle that within any community there is a wealth of knowledge and experience which, if used in creative ways, can be channeled into collective action to achieve our communities' desired goals.

Youth Workers work alongside people in their own communities to help build relationships with key people and organisations, to identify local need and develop provision to meet that need. They create opportunities for the community to learn new skills and, by enabling people to act together, youth & community development practitioners help to foster social inclusion and equality.

The model works on the basis that the district commissioner, a qualified youth worker, works with the community to enable them to deliver services by offering resources and expertise. In the past to run a youth club the council would have employed 3 youth workers and provided a significant amount of other support such as buildings etc. Now youth workers work alongside young people and their families in their own communities to help build relationships with key people to identify local need and develop provision to meet that need themselves. They then create opportunities for the community to learn new skills to support this need.

In order to support these new groups the Youth Service provides access to a qualified youth worker and support from our partners who work with young people and communities by helping them to access:

- Advice on how to set up a youth club
- Free youth work volunteer training
- Help identifying and measuring outcomes
- Help writing bids and looking for funding
- DBS checks
- A cloud based support platform delivered by “RunAClub”
- Free curriculum support and resources
- Help with policies and procedures
- Access to premises
- Health and Safety guidance
- Access to accreditations and awards

## **Successes and Challenges**

Like any major transformation programme the service has faced and will continue to face many challenges along the journey. This change in approach required fundamental changes to the way in which employees worked with communities, which in turn requires employees to develop their own skills and confidence. Many employees had entered youth work as a result of themselves having experienced the positive impact of a youth worker in their lives. Moving from provision to facilitation was and continues to be a challenge for many. Internally we also had to work hard to remove bureaucracy to free up the use of our premises and find solutions to safeguarding challenges. Not all communities embraced the new model, we faced community apathy and resistance but found creative ways to overcome this.

Further significant challenges have been to develop a process to ensure good quality youth work is consistent across Essex. We also needed to measure outcomes and demonstrate impact of youth work intervention; this has taken significant work managed by creating a well written Youth Work Curriculum for Essex.

There are many benefits to be achieved from the new model. The key benefit is to increase the volume and variety of provision for less money. Already, the results have been startling, rather than having a youth centre open and staffed by the council 3 times a week, by opening the resources to the community, the centres are open daily increasing the provision. Currently there are 105 additional sessions every week being facilitated with our support. We are truly working in partnership with our communities and young people rather than providing lip service to partnership working. Our own employees, some of whom were sceptical about the change, have also seen benefits through improved development providing them with greater skills and knowledge, which in turn has ensured better recognition of the work undertaken by youth workers and the service. The service now supports an increased opportunity for volunteering for our young people.

We have also identified new funding streams generating grant funding, establishing partnership working and funding from other sectors such as schools, national government and the Youth Offending Service which in turn provides a more secure future for youth work.

		<b>AGENDA ITEM 6</b>
		<b>PAF/22/15</b>
<b>Committee:</b>	<b>People and Families Scrutiny Committee</b>	
<b>Date:</b>	<b>12 November 2015</b>	
<b><u>Children's Centres and Healthy Child Programme Consultation</u></b>		
<b>Enquiries to:</b>	<b>Stav Yiannou</b>  <b>Head of Commissioning Early Years and Childcare, Integrated Commissioning and Vulnerable People - People Commissioning</b>  <b>Telephone: 03330 136608 Mobile: 07809314847</b>  <b><u><a href="mailto:stav.yiannou@essex.gov.uk">stav.yiannou@essex.gov.uk</a></u></b>	

### **Purpose of the Paper:**

To advise People and Families Scrutiny Committee of the early engagement activities taking place with families, young people and stakeholders across Essex on the design of an Integrated Pre Birth – 19 Health Wellbeing and Family Support model.

### **Executive Summary**

We are in the process of redesigning the current service offer for Children's Centres and the Healthy Child Programme (0 – 5 and 5 -19) and want to place parents, children and families at the heart of our service re-design. We want to understand how the services we currently have in place work for families and want to ensure any change to our systems is reflective of what families feel/need/want.

We are undertaking further engagement work with families and stakeholders to inform a public consultation scheduled to take place in the New Year. This engagement work will help us develop our proposals which we will officially consult on and will build on the existing engagement work, and the ethnographic research. We will be particularly interested in five key areas:

- Family isolation
- Accessibility of services
- Provision of services
- Whether families feel listened to

An on line survey and face to face engagement activities will run from **5th October 2015 – 28th November 2015**.

## Background

The support that families experience from conception through birth and throughout childhood should support ECC's vision that every child in Essex has the best start in life.

In Autumn 2014 Essex undertook an ambitious review of Early Years services across the county. The review purposefully took an innovative approach, bringing together a range of different data including ethnographic insight from families, international horizon scanning, and intelligence about the local Essex context for families with children up to 19 years of age, to generate a Case for Change and identify potentially alternative solutions

The EY review revealed how complex the systems are for children and families to navigate and access support due to the fragmentation of current services. The work developed a new unifying vision, Our New System, a visualisation of the features of an ideal Children's System needed to deliver strengths-based, preventative support that reduces isolation and builds resilience amongst families with children (see System document imbedded below).

During the period October – November 2015 ECC are going to engage with families and stakeholders through a range of face to face sessions including focus groups and interviews. Following the engagement period wider consultation with families and stakeholders will take place on future service models. This consultation will take place between **7<sup>th</sup> January and 4<sup>th</sup> March 2016**.

Contracts that service the Early Years system currently are Children's Centres (CC) and 0-5 Healthy Child Programme (HCP). In the new system this will also include 5-19 HCP. These services are currently commissioned independently of each other. This provides Essex County Council with the opportunity to commission an integrated pre-birth – 19 Health Wellbeing and Family Support model from April 2017.

The engagement will consist of:-

- <http://surveys.essexinsight.org.uk/prebirth19> - survey for parents and carers
- <http://surveys.essexinsight.org.uk/prebirth19stake> - survey for stakeholders
- <http://surveys.essexinsight.org.uk/prebirth19cyp> - survey for children and young people
- Focus groups with families, children and young people
- Face to face engagement with families and young people
- Stakeholder engagement sessions

## Supporting information

Our New System Flyer attached as Appendix

## Work with and for families across Essex

### We will...



#### Look first at families' strengths

especially those of parents (both Mums and Dads) and take time to understand their needs fully



#### Focus on preventing problems

before they occur and offer flexible, responsive support when and where it's required



**Build the resilience of parents, families and communities** to support each other



#### Work together across the whole system

– aligning our resources so we can best support families and 'do what needs to be done when it needs to be done' (not necessarily what is on our job description)



#### Base all we do on evidence

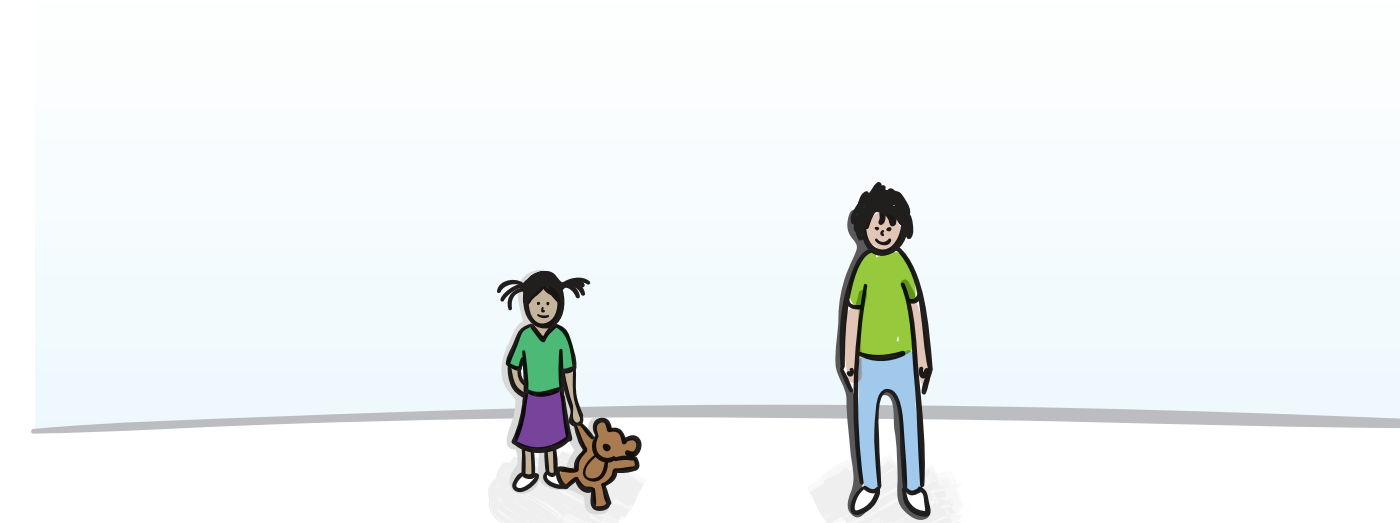
of both what is needed and of what works, and be brave enough to stop things that aren't working



#### Be clear and consistent about the outcomes

we expect, and judge what we do against them

## We will know our system is successful if it delivers these outcomes:



### Children...

- Are physically and emotionally healthy
- Are resilient and able to learn well
- Are supported by their families, their community, and - when necessary - professionals to thrive and be successful
- Live in environments that are safe and support their learning and development



### Parents...

- Are supporting one another in their communities
- Know where to get help if they need it
- Have trusted relationships with practitioners, neighbours and other parents
- Are well informed about how best to help their child develop, and motivated to make great choices



### Communities...

- See it as their collective responsibility to support parents and young children
- Are providing sustainable support through individuals, community groups, businesses and voluntary organisations
- Are seen, understood and valued by practitioners as being 'part of the solution'



### Practitioners...

- Focus first on families and their strengths
- Work closely with families to understand what they need, and build trusting relationships
- Have a shared vision and understanding of outcomes and success
- Are skilled, knowledgeable and are co-creating and co-delivering approaches that work



**PEOPLE AND FAMILIES SCRUTINY COMMITTEE WORK  
PROGRAMME**
**MONTH AT A GLANCE  
(with links to papers)**

	May-14	Jun-14	Jul-14	Aug-14
Cttee Meeting:	Cttee Meeting:	Cttee Meeting:	Cttee Meeting:	Cttee Meeting:
<a href="#">8th</a>	none	<a href="#">10th</a>	none	none
Papers deadline	Papers deadline	Papers deadline	Papers deadline	Papers deadline
<b>28-Apr</b>	none	<b>2nd</b>	none	none
Other activity	Other activity	Other activity dates	Other activity dates	Other activity dates
none	none	<b>Special Reablement T&amp;F Group</b>	none	none

	SORT by May-14	SORT by Jun-14	SORT by Jul-14	SORT by Aug-14
<b>Member Visits to Care Homes</b> Cllr Malcolm Maddocks				
<b>New Operating Model for the Youth Service</b> Cllr Ray Gooding, Michael O'Brien				
<b>Child Sexual Exploitation</b> Cllr Dick Madden, Paul Secker				
<b>Children's Centres and Healthy Child Programme Consultation</b> Cllr Ray Gooding, Stavroulla Yiannou				
<b>Changes to Funding to Housing Related Support Funded Older People's Services (Call-in)</b> Cllr Dick Madden, Dave Hill				
<b>Educational Attainment in Essex</b> Cllr Ray Gooding, Chris Kiernan	The YEA responded to the draft scoping document for the review.		Scoping document agreed.	
<b>Training and Jobs for Young People</b> Cllr	Report received and noted.			
<b>Public Health and Young People</b> Cllr Anne Brown	Report received and noted.			
<b>Partnership working with the Young Essex Assembly</b> Cllr	Meeting started at 5.30 p.m. to enable young people to attend a Scrutiny meeting at ECC as part of the agreement with the YEA.			
<b>Commissioning of Services for Vulnerable People</b> Cllr's Dick Madden/Anne Brown			Scoping document agreed.	
<b>Sensory Services Recommendation to the Cabinet Member</b> Cllr Anne Brown, Anna Saunders	Page 15 of 38		Report noted with a further update requested In the spring of 2015.	

**PEOPLE AND FAMILIES SCRUTINY COMMITTEE WORK  
PROGRAMME**
**MONTH AT A GLANCE  
(with links to papers)**

	Sep-14	Oct-14	Nov-14	Dec-14
Cttee Meeting:	Cttee Meeting:	Cttee Meeting:	Cttee Meeting:	Cttee Meeting:
<a href="#">4th</a>	none	<a href="#">13th</a>	none	none
Papers deadline	Papers deadline	Papers deadline	Papers deadline	Papers deadline
<b>26-Aug</b>	none	<b>11th</b>	none	none
Other activity dates	Other activity dates	Other activity dates	Other activity dates	Other activity dates
none	none	none	none	none
	SORT by Sep-14	SORT by Oct-14	SORT by Nov-14	SORT by Dec-14
<b>Member Visits to Care Homes</b> Cllr Malcolm Maddocks	An update on Member Visits to Residential Care Homes received from Cllr Terry Cutmore.			
<b>New Operating Model for the Youth Service</b> Cllr Ray Gooding, Michael O'Brien			An update on the Youth Service new operating model received. An action arising was requested for the January 2015 meeting with a further update requested for May 2015.	
<b>Child Sexual Exploitation</b> Cllr Dick Madden, Paul Secker				
<b>Children's Centres and Healthy Child Programme Consultation</b> Cllr Ray Gooding, Stavroulla Yiannou				
<b>Changes to Funding to Housing Related Support Funded Older People's Services (Call-in)</b> Cllr Dick Madden, Dave Hill				
<b>Educational Attainment in Essex</b> Cllr Ray Gooding, Chris Kiernan	An updated scoping document agreed.	T&F 1 & 2		T&F 3
<b>Training and Jobs for Young People</b> Cllr				
<b>Public Health and Young People</b> Cllr Anne Brown				
<b>Partnership working with the Young Essex Assembly</b> Cllr				
<b>Commissioning of Services for Vulnerable People</b> Cllr's Dick Madden/Anne Brown	An updated scoping document agreed.		T&F 1	
<b>Sensory Services Recommendation to the Cabinet Member</b> Cllr Anne Brown, Anna Saunders	Page 16 of 38			



**PEOPLE AND FAMILIES SCRUTINY COMMITTEE WORK  
PROGRAMME**
**MONTH AT A GLANCE  
(with links to papers)**

	Jan-15	Feb-15	Mar-15	Apr-15
Cttee Meeting:	Cttee Meeting:	Cttee Meeting:	Cttee Meeting:	Cttee Meeting:
<a href="#">15th</a>	none	12th		
Papers deadline	Papers deadline	Papers deadline	Papers deadline	Papers deadline
6th	none	3rd		
Other activity dates	Other activity dates	Other activity dates	Other activity dates	Other activity dates
none	TBC	TBC	TBC	TBC
	SORT by Jan-15	SORT by Feb-15	SORT by Mar-15	SORT by Apr-15
<b>Member Visits to Care Homes</b> Cllr Malcolm Maddocks				
<b>New Operating Model for the Youth Service</b> Cllr Ray Gooding, Michael O'Brien	Matter arising note provided by the Cabinet Member.			
<b>Child Sexual Exploitation</b> Cllr Dick Madden, Paul Secker				
<b>Children's Centres and Healthy Child Programme Consultation</b> Cllr Ray Gooding, Stavroulla Yiannou				
<b>Changes to Funding to Housing Related Support Funded Older People's Services (Call-in)</b> Cllr Dick Madden, Dave Hill				
<b>Educational Attainment in Essex</b> Cllr Ray Gooding, Chris Kiernan	T&F 4	T&F 5	Data to be received plus T&F 6&7	T&F 8&9
<b>Training and Jobs for Young People</b> Cllr				
<b>Public Health and Young People</b> Cllr Anne Brown				
<b>Partnership working with the Young Essex Assembly</b> Cllr				
<b>Commissioning of Services for Vulnerable People</b> Cllr's Dick Madden/Anne Brown				
<b>Sensory Services Recommendation to the Cabinet Member</b> Cllr Anne Brown, Anna Saunders	Page 17 of 38			

**PEOPLE AND FAMILIES SCRUTINY COMMITTEE WORK  
PROGRAMME**
**MONTH AT A GLANCE  
(with links to papers)**

	May-15	Jun-15	Jul-15	Aug-15
	Cttee Meeting:	Cttee Meeting:	Cttee Meeting:	Cttee Meeting:
	Papers deadline	Papers deadline	Papers deadline	Papers deadline
	Other activity dates	Other activity dates	Other activity dates	Other activity dates
	TBC	TBC	TBC	TBC
	SORT by May-15	SORT by Jun-15	SORT by Jul-15	SORT by Aug-15
<b>Member Visits to Care Homes</b> Cllr Malcolm Maddocks				
<b>New Operating Model for the Youth Service</b> Cllr Ray Gooding, Michael O'Brien				
<b>Child Sexual Exploitation</b> Cllr Dick Madden, Paul Secker				
<b>Children's Centres and Healthy Child Programme Consultation</b> Cllr Ray Gooding, Stavroulla Yiannou				
<b>Changes to Funding to Housing Related Support Funded Older People's Services (Call-in)</b> Cllr Dick Madden, Dave Hill				
<b>Educational Attainment in Essex</b> Cllr Ray Gooding, Chris Kiernan			Draft Final Report received and approved by the Committee	
<b>Training and Jobs for Young People</b> Cllr				
<b>Public Health and Young People</b> Cllr Anne Brown				
<b>Partnership working with the Young Essex Assembly</b> Cllr				
<b>Commissioning of Services for Vulnerable People</b> Cllr's Dick Madden/Anne Brown				
<b>Sensory Services Recommendation to the Cabinet Member</b> Cllr Anne Brown, Anna Saunders				

**PEOPLE AND FAMILIES SCRUTINY COMMITTEE WORK  
PROGRAMME**
**MONTH AT A GLANCE  
(with links to papers)**

	Sep-15	Oct-15	Nov-15
	Cttee Meeting:	Cttee Meeting:	Cttee Meeting:
	Papers deadline	Papers deadline	Papers deadline
	Other activity dates	Other activity dates	Other activity dates
	TBC	Site Visit: Mistley Acorn Village	Special Meeting 2 November
	SORT by Sep-15		SORT by Nov-15
	SORT by Oct-15		
<b>Member Visits to Care Homes</b> Cllr Malcolm Maddocks			Update
<b>New Operating Model for the Youth Service</b> Cllr Ray Gooding, Michael O'Brien			Update requested.
<b>Child Sexual Exploitation</b> Cllr Dick Madden, Paul Secker			Report requested
<b>Children's Centres and Healthy Child Programme Consultation</b> Cllr Ray Gooding, Stavroulla Yiannou			Report requested
<b>Changes to Funding to Housing Related Support Funded Older People's Services (Call-in)</b> Cllr Dick Madden, Dave Hill			Call-in, 2 November 15. The Committee voted 8:1 to ratify the Cabinet Member decision. NO FURTHER ACTION
<b>Educational Attainment in Essex</b> Cllr Ray Gooding, Chris Kiernan	Cabinet Member response to the Final Report and Recommendations		
<b>Training and Jobs for Young People</b> Cllr			
<b>Public Health and Young People</b> Cllr Anne Brown			
<b>Partnership working with the Young Essex Assembly</b> Cllr			
<b>Commissioning of Services for Vulnerable People</b> Cllr's Dick Madden/Anne Brown			
<b>Sensory Services Recommendation to the Cabinet Member</b> Cllr Anne Brown, Anna Saunders	Page 19 of 38		

**PEOPLE AND FAMILIES SCRUTINY COMMITTEE WORK  
PROGRAMME**
**MONTH AT A GLANCE  
(with links to papers)**

	<b>Dec-15</b>	<b>Jan-16</b>	<b>Feb-16</b>	<b>Mar-16</b>
	Cttee Meeting:	Cttee Meeting:	Cttee Meeting:	Cttee Meeting:
	Papers deadline	Papers deadline	Papers deadline	Papers deadline
	Other activity dates	Other activity dates	Other activity dates	Other activity dates
	<b>TBC</b>	<b>TBC</b>	<b>TBC</b>	<b>TBC</b>
	SORT by Dec-15	SORT by Jan-16	SORT by Feb-16	SORT by Mar-16
<b>Member Visits to Care Homes</b> Cllr Malcolm Maddocks				
<b>New Operating Model for the Youth Service</b> Cllr Ray Gooding, Michael O'Brien				
<b>Child Sexual Exploitation</b> Cllr Dick Madden, Paul Secker				
<b>Children's Centres and Healthy Child Programme Consultation</b> Cllr Ray Gooding, Stavroulla Yiannou				
<b>Changes to Funding to Housing Related Support Funded Older People's Services (Call-in)</b> Cllr Dick Madden, Dave Hill				
<b>Educational Attainment in Essex</b> Cllr Ray Gooding, Chris Kiernan				Implementemation update
<b>Training and Jobs for Young People</b> Cllr				
<b>Public Health and Young People</b> Cllr Anne Brown				
<b>Partnership working with the Young Essex Assembly</b> Cllr				
<b>Commissioning of Services for Vulnerable People</b> Cllr's Dick Madden/Anne Brown				
<b>Sensory Services Recommendation to the Cabinet Member</b> Cllr Anne Brown, Anna Saunders				

**PEOPLE AND FAMILIES SCRUTINY COMMITTEE WORK  
PROGRAMME**
**MONTH AT A GLANCE  
(with links to papers)**

	<b>Apr-16</b>	<b>May-16</b>
	Cttee Meeting:	Cttee Meeting:
	Papers deadline	Papers deadline
	Other activity dates	Other activity dates
	<b>TBC</b>	<b>TBC</b>
	<b>SORT by Apr-16</b>	<b>SORT by May-16</b>
<b>Member Visits to Care Homes</b> Cllr Malcolm Maddocks		
<b>New Operating Model for the Youth Service</b> Cllr Ray Gooding, Michael O'Brien		
<b>Child Sexual Exploitation</b> Cllr Dick Madden, Paul Secker		
<b>Children's Centres and Healthy Child Programme Consultation</b> Cllr Ray Gooding, Stavroulla Yiannou		
<b>Changes to Funding to Housing Related Support Funded Older People's Services (Call-in)</b> Cllr Dick Madden, Dave Hill		
<b>Educational Attainment in Essex</b> Cllr Ray Gooding, Chris Kiernan		
<b>Training and Jobs for Young People</b> Cllr		
<b>Public Health and Young People</b> Cllr Anne Brown		
<b>Partnership working with the Young Essex Assembly</b> Cllr		
<b>Commissioning of Services for Vulnerable People</b> Cllr's Dick Madden/Anne Brown		
<b>Sensory Services Recommendation to the Cabinet Member</b> Cllr Anne Brown, Anna Saunders	Page 21 of 38	

**PEOPLE AND FAMILIES SCRUTINY COMMITTEE WORK  
PROGRAMME**

	<b>May-14</b>	<b>Jun-14</b>	<b>Jul-14</b>	<b>Aug-14</b>
<b>MONTH AT A GLANCE</b> (with links to papers)	Cttee Meeting:	Cttee Meeting:	Cttee Meeting:	Cttee Meeting:
	<a href="#">8th</a>	<b>none</b>	<a href="#">10th</a>	<b>none</b>
	Papers deadline	Papers deadline	Papers deadline	Papers deadline
	<b>28-Apr</b>	<b>none</b>	<b>2nd</b>	<b>none</b>
	Other activity	Other activity	Other activity dates	Other activity dates
	<b>none</b>	<b>none</b>	<b>Special Reablement T&amp;F Group</b>	<b>none</b>
<b>Commissioning Strategies</b> Cllr's Anne Brown/Ray Gooding/Dick Madden,			Commissioning Strategies across the terms of reference of the Committee received and noted.	
<b>Occupational Therapy</b> Cllr Dick Madden, Mike Boyle				
<b>Social Impact Bonds</b> Cllr Dick Madden, Clare Burrell/Tanya Gillett				
<b>Essex Cares</b> Cllr Anne Brown, James Bullion, Liz Chidgey (Essex Cares)				
<b>Safeguarding Adults Annual Report</b> Cllr Dick Madden, Paul Bedwell				
<b>Children in Care</b> Cllr Dick Madden, Helen Lincoln				
<b>Reprocurement of Community Provision for Children with a Disability</b> Cllr Dick Madden, Philippa Bull				
<b>Care Act</b> Bullion, Paul Bedwell				
<b>Carers Strategy</b> Cllr Anne Brown, Sharon Longworth				
<b>Community Agents</b> Cllr Anne Brown				
<b>Domestic Violence</b> Cllr Dick Madden, Sheila Norris				
<b>Meals on Wheels</b> Cllr Dick Madden				
<b>Reablement</b> Cllr Anne Brown			T&F 1: T&F Group established to comment on Reablement decision being taken to Cabinet	

**PEOPLE AND FAMILIES SCRUTINY COMMITTEE WORK  
PROGRAMME**

	Sep-14	Oct-14	Nov-14	Dec-14
<b>MONTH AT A GLANCE</b> (with links to papers)	Cttee Meeting:	Cttee Meeting:	Cttee Meeting:	Cttee Meeting:
	<a href="#">4th</a>	none	<a href="#">13th</a>	none
	Papers deadline	Papers deadline	Papers deadline	Papers deadline
	<b>26-Aug</b>	none	<b>11th</b>	none
	Other activity dates	Other activity dates	Other activity dates	Other activity dates
	none	none	none	none
<b>Commissioning Strategies</b> Cllr's Anne Brown/Ray Gooding/Dick Madden,				
<b>Occupational Therapy</b> Cllr Dick Madden, Mike Boyle	Update report received, noted and commended.			
<b>Social Impact Bonds</b> Cllr Dick Madden, Clare Burrell/Tanya Gillett	A report was received and noted with an update report requested in 12 months.			
<b>Essex Cares</b> Cllr Anne Brown, James Bullion, Liz Chidgey (Essex Cares)			A report was received and noted with an update report requested for May 2015. The Committee requested the Essex Cares website included the Annual Accounts.	
<b>Safeguarding Adults Annual Report</b> Cllr Dick Madden, Paul Bedwell			A report was received and noted.	
<b>Children in Care</b> Cllr Dick Madden, Helen Lincoln				
<b>Reprocurement of Community Provision for Children with a Disability</b> Cllr Dick Madden, Philippa Bull				
<b>Care Act</b> Bullion, Paul Bedwell	Cllr Dick Madden, James			
<b>Carers Strategy</b> Cllr Anne Brown, Sharon Longworth		T&F 1	T&F 2	
<b>Community Agents</b> Cllr Anne Brown				
<b>Domestic Violence</b> Cllr Dick Madden, Sheila Norris				
<b>Meals on Wheels</b> Cllr Dick Madden				
<b>Reablement</b> Cllr Anne Brown				
	Page 23 of 38			

**PEOPLE AND FAMILIES SCRUTINY COMMITTEE WORK  
PROGRAMME**

	<b>Jan-15</b>	<b>Feb-15</b>	<b>Mar-15</b>	<b>Apr-15</b>
<b>MONTH AT A GLANCE</b> (with links to papers)	Cttee Meeting:	Cttee Meeting:	Cttee Meeting:	Cttee Meeting:
	<a href="#">15th</a>	<b>none</b>	<b>12th</b>	
	Papers deadline	Papers deadline	Papers deadline	Papers deadline
	<b>6th</b>	<b>none</b>	<b>3rd</b>	
	Other activity dates	Other activity dates	Other activity dates	Other activity dates
	<b>none</b>	<b>TBC</b>	<b>TBC</b>	<b>TBC</b>
<b>Commissioning Strategies</b> Cllr's Anne Brown/Ray Gooding/Dick Madden,				
<b>Occupational Therapy</b> Cllr Dick Madden, Mike Boyle				
<b>Social Impact Bonds</b> Cllr Dick Madden, Clare Burrell/Tanya Gillett				
<b>Essex Cares</b> Cllr Anne Brown, James Bullion, Liz Chidgey (Essex Cares)	Annual Accounts on website from January 2015 as requested by the Committee.			
<b>Safeguarding Adults Annual Report</b> Cllr Dick Madden, Paul Bedwell				
<b>Children in Care</b> Cllr Dick Madden, Helen Lincoln	A report was received, noted and commended.			
<b>Reprocurement of Community Provision for Children with a Disability</b> Cllr Dick Madden, Philippa Bull	The Committee was consulted on the Reprocurement of the service.			
<b>Care Act</b> Bullion, Paul Bedwell	Cllr Dick Madden, James		Report to be received.	
<b>Carers Strategy</b> Cllr Anne Brown, Sharon Longworth	T&F 3	T&F 4	The Task and Finish Group to present an interim report.	T&F 5
<b>Community Agents</b> Cllr Anne Brown				
<b>Domestic Violence</b> Cllr Dick Madden, Sheila Norris				
<b>Meals on Wheels</b> Cllr Dick Madden				
<b>Reablement</b> Cllr Anne Brown				
	Page 24 of 38			



**PEOPLE AND FAMILIES SCRUTINY COMMITTEE WORK  
PROGRAMME**

	May-15	Jun-15	Jul-15	Aug-15
<b>MONTH AT A GLANCE</b> (with links to papers)	Cttee Meeting:	Cttee Meeting:	Cttee Meeting:	Cttee Meeting:
	Papers deadline	Papers deadline	Papers deadline	Papers deadline
	Other activity dates	Other activity dates	Other activity dates	Other activity dates
	<b>TBC</b>	<b>TBC</b>	<b>TBC</b>	<b>TBC</b>
<b>Commissioning Strategies</b> Cllr's Anne Brown/Ray Gooding/Dick Madden,				
<b>Occupational Therapy</b> Cllr Dick Madden, Mike Boyle				
<b>Social Impact Bonds</b> Cllr Dick Madden, Clare Burrell/Tanya Gillett				
<b>Essex Cares</b> Cllr Anne Brown, James Bullion, Liz Chidgey (Essex Cares)		Update report to be received.		
<b>Safeguarding Adults Annual Report</b> Cllr Dick Madden, Paul Bedwell				
<b>Children in Care</b> Cllr Dick Madden, Helen Lincoln				
<b>Reprocurement of Community Provision for Children with a Disability</b> Cllr Dick Madden, Philippa Bull				
<b>Care Act</b> Bullion, Paul Bedwell	Cllr Dick Madden, James			
<b>Carers Strategy</b> Cllr Anne Brown, Sharon Longworth				
<b>Community Agents</b> Cllr Anne Brown	Report requested			
<b>Domestic Violence</b> Cllr Dick Madden, Sheila Norris		Report to be received.	Report received from the Cabinet Member	
<b>Meals on Wheels</b> Cllr Dick Madden			Status report received from the Cabinet Member	
<b>Reablement</b> Cllr Anne Brown				
	Page 25 of 38			

**PEOPLE AND FAMILIES SCRUTINY COMMITTEE WORK  
PROGRAMME**

	Sep-15	Oct-15	Nov-15
<b>MONTH AT A GLANCE</b> (with links to papers)	Cttee Meeting:	Cttee Meeting:	Cttee Meeting:
	Papers deadline	Papers deadline	Papers deadline
	Other activity dates	Other activity dates	Other activity dates
	<b>TBC</b>	<b>Site Visit: Mistley Acorn Village</b>	<b>Special Meeting 2 November</b>
<b>Commissioning Strategies</b> Cllr's Anne Brown/Ray Gooding/Dick Madden,			
<b>Occupational Therapy</b> Cllr Dick Madden, Mike Boyle			
<b>Social Impact Bonds</b> Cllr Dick Madden, Clare Burrell/Tanya Gillett			
<b>Essex Cares</b> Cllr Anne Brown, James Bullion, Liz Chidgey (Essex Cares)			
<b>Safeguarding Adults Annual Report</b> Cllr Dick Madden, Paul Bedwell			
<b>Children in Care</b> Cllr Dick Madden, Helen Lincoln			
<b>Reprocurement of Community Provision for Children with a Disability</b> Cllr Dick Madden, Philippa Bull			
<b>Care Act</b> Bullion, Paul Bedwell	Cllr Dick Madden, James		
<b>Carers Strategy</b> Cllr Anne Brown, Sharon Longworth			
<b>Community Agents</b> Cllr Anne Brown			
<b>Domestic Violence</b> Cllr Dick Madden, Sheila Norris			
<b>Meals on Wheels</b> Cllr Dick Madden	Verbal update to be received		
<b>Reablement</b> Cllr Anne Brown			
	Page 26 of 38		

**PEOPLE AND FAMILIES SCRUTINY COMMITTEE WORK  
PROGRAMME**

	<b>Dec-15</b>	<b>Jan-16</b>	<b>Feb-16</b>	<b>Mar-16</b>
<b>MONTH AT A GLANCE</b> (with links to papers)	Cttee Meeting:	Cttee Meeting:	Cttee Meeting:	Cttee Meeting:
	Papers deadline	Papers deadline	Papers deadline	Papers deadline
	Other activity dates	Other activity dates	Other activity dates	Other activity dates
	<b>TBC</b>	<b>TBC</b>	<b>TBC</b>	<b>TBC</b>
<b>Commissioning Strategies</b> Cllr's Anne Brown/Ray Gooding/Dick Madden,				
<b>Occupational Therapy</b> Cllr Dick Madden, Mike Boyle				
<b>Social Impact Bonds</b> Cllr Dick Madden, Clare Burrell/Tanya Gillett				
<b>Essex Cares</b> Cllr Anne Brown, James Bullion, Liz Chidgey (Essex Cares)				
<b>Safeguarding Adults Annual Report</b> Cllr Dick Madden, Paul Bedwell				
<b>Children in Care</b> Cllr Dick Madden, Helen Lincoln				
<b>Reprocurement of Community Provision for Children with a Disability</b> Cllr Dick Madden, Philippa Bull				
<b>Care Act</b> Bullion, Paul Bedwell	Cllr Dick Madden, James			
<b>Carers Strategy</b> Cllr Anne Brown, Sharon Longworth	T&F quarterly update			
<b>Community Agents</b> Cllr Anne Brown				
<b>Domestic Violence</b> Cllr Dick Madden, Sheila Norris				
<b>Meals on Wheels</b> Cllr Dick Madden				
<b>Reablement</b> Cllr Anne Brown				
	Page 27 of 38			

**PEOPLE AND FAMILIES SCRUTINY COMMITTEE WORK  
PROGRAMME**

	<b>Apr-16</b>	<b>May-16</b>
<b>MONTH AT A GLANCE</b> (with links to papers)	Cttee Meeting:	Cttee Meeting:
	Papers deadline	Papers deadline
	Other activity dates	Other activity dates
	<b>TBC</b>	<b>TBC</b>
<b>Commissioning Strategies</b> Cllr's Anne Brown/Ray Gooding/Dick Madden,		
<b>Occupational Therapy</b> Cllr Dick Madden, Mike Boyle		
<b>Social Impact Bonds</b> Cllr Dick Madden, Clare Burrell/Tanya Gillett		
<b>Essex Cares</b> Cllr Anne Brown, James Bullion, Liz Chidgey (Essex Cares)		
<b>Safeguarding Adults Annual Report</b> Cllr Dick Madden, Paul Bedwell		
<b>Children in Care</b> Cllr Dick Madden, Helen Lincoln		
<b>Reprocurement of Community Provision for Children with a Disability</b> Cllr Dick Madden, Philippa Bull		
<b>Care Act</b> Bullion, Paul Bedwell	Cllr Dick Madden, James	
<b>Carers Strategy</b> Cllr Anne Brown, Sharon Longworth		
<b>Community Agents</b> Cllr Anne Brown		
<b>Domestic Violence</b> Cllr Dick Madden, Sheila Norris		
<b>Meals on Wheels</b> Cllr Dick Madden		
<b>Reablement</b> Cllr Anne Brown		
	Page 28 of 38	

**PEOPLE AND FAMILIES SCRUTINY COMMITTEE WORK  
PROGRAMME**

	<b>May-14</b>	<b>Jun-14</b>	<b>Jul-14</b>	<b>Aug-14</b>
<b>MONTH AT A GLANCE</b> (with links to papers)	Cttee Meeting:	Cttee Meeting:	Cttee Meeting:	Cttee Meeting:
	<a href="#">8th</a>	none	<a href="#">10th</a>	none
	Papers deadline	Papers deadline	Papers deadline	Papers deadline
	<b>28-Apr</b>	none	<b>2nd</b>	none
	Other activity	Other activity	Other activity dates	Other activity dates
	none	none	<b>Special Reablement T&amp;F Group</b>	none
<b>All Age Disability Framework</b> Cllr Dick Madden, Barbara Herts				

**PEOPLE AND FAMILIES SCRUTINY COMMITTEE WORK  
PROGRAMME**

	<b>Sep-14</b>	<b>Oct-14</b>	<b>Nov-14</b>	<b>Dec-14</b>
<b>MONTH AT A GLANCE (with links to papers)</b>	Cttee Meeting:	Cttee Meeting:	Cttee Meeting:	Cttee Meeting:
	<a href="#">4th</a>	<b>none</b>	<a href="#">13th</a>	<b>none</b>
	Papers deadline	Papers deadline	Papers deadline	Papers deadline
	<b>26-Aug</b>	<b>none</b>	<b>11th</b>	<b>none</b>
	Other activity dates	Other activity dates	Other activity dates	Other activity dates
	<b>none</b>	<b>none</b>	<b>none</b>	<b>none</b>
<b>All Age Disability Framework</b> Cllr Dick Madden, Barbara Herts				

**PEOPLE AND FAMILIES SCRUTINY COMMITTEE WORK  
PROGRAMME**

	<b>Jan-15</b>	<b>Feb-15</b>	<b>Mar-15</b>	<b>Apr-15</b>
<b>MONTH AT A GLANCE (with links to papers)</b>	Cttee Meeting:	Cttee Meeting:	Cttee Meeting:	Cttee Meeting:
	<a href="#">15th</a>	<b>none</b>	<b>12th</b>	
	Papers deadline	Papers deadline	Papers deadline	Papers deadline
	<b>6th</b>	<b>none</b>	<b>3rd</b>	
	Other activity dates	Other activity dates	Other activity dates	Other activity dates
	<b>none</b>	<b>TBC</b>	<b>TBC</b>	<b>TBC</b>
<b>All Age Disability Framework</b> Cllr Dick Madden, Barbara Herts				

**PEOPLE AND FAMILIES SCRUTINY COMMITTEE WORK  
PROGRAMME**

	<b>May-15</b>	<b>Jun-15</b>	<b>Jul-15</b>	<b>Aug-15</b>
<b>MONTH AT A GLANCE (with links to papers)</b>	Cttee Meeting:	Cttee Meeting:	Cttee Meeting:	Cttee Meeting:
	Papers deadline	Papers deadline	Papers deadline	Papers deadline
	Other activity dates	Other activity dates	Other activity dates	Other activity dates
	<b>TBC</b>	<b>TBC</b>	<b>TBC</b>	<b>TBC</b>
<b>All Age Disability Framework</b> Cllr Dick Madden, Barbara Herts				



**PEOPLE AND FAMILIES SCRUTINY COMMITTEE WORK  
PROGRAMME**

	<b>Sep-15</b>	<b>Oct-15</b>	<b>Nov-15</b>
<b>MONTH AT A GLANCE (with links to papers)</b>	Cttee Meeting:	Cttee Meeting:	Cttee Meeting:
	Papers deadline	Papers deadline	Papers deadline
	Other activity dates	Other activity dates	Other activity dates
	<b>TBC</b>	<b>Site Visit: Mistley Acorn Village</b>	<b>Special Meeting 2 November</b>
<b>All Age Disability Framework</b> Cllr Dick Madden, Barbara Herts			

**PEOPLE AND FAMILIES SCRUTINY COMMITTEE WORK  
PROGRAMME**

	<b>Dec-15</b>	<b>Jan-16</b>	<b>Feb-16</b>	<b>Mar-16</b>
<b>MONTH AT A GLANCE (with links to papers)</b>	Cttee Meeting:	Cttee Meeting:	Cttee Meeting:	Cttee Meeting:
	Papers deadline	Papers deadline	Papers deadline	Papers deadline
	Other activity dates	Other activity dates	Other activity dates	Other activity dates
	<b>TBC</b>	<b>TBC</b>	<b>TBC</b>	<b>TBC</b>
<b>All Age Disability Framework</b> Cllr Dick Madden, Barbara Herts				

**PEOPLE AND FAMILIES SCRUTINY COMMITTEE WORK  
PROGRAMME**

	<b>Apr-16</b>	<b>May-16</b>
<b>MONTH AT A GLANCE</b> <b>(with links to papers)</b>	Cttee Meeting:	Cttee Meeting:
	Papers deadline	Papers deadline
	Other activity dates	Other activity dates
	<b>TBC</b>	<b>TBC</b>
<b>All Age Disability Framework</b> Cllr Dick Madden, Barbara Herts		

all blank cells will automatically grey out

cells will remain grey despite containing text if they begin with the exact letters: T&F

cells will remain grey despite containing text if they begin with the exact letters: Private

To make text appear on more than one line in a box (eg in the 'item' column) I deleted the

extra spaces and instead used Alt+Return to create line breaks.

