

Green Essex Strategy Update



John Meehan, Head of Sustainability & Resilience
Jayne Rogers, Environment Officer

GREEN
ESSEX



Overview

- Green Essex Strategy Progress
- Consultation feedback
- Next Steps
- Imminent and Active Projects

“Tackling climate change is not just the role of one person, or one administration, or one country. We are all responsible custodians for our world. But by working with staff, partners, businesses, residents and communities, we will lead on reducing emissions, energy usage and waste across Essex, while increasing the amount of green infrastructure we have.”

Councillor David Finch, Leader of the Council - Full Council 8th October –
Leader's Executive Statement

Green Essex Strategy Progress

- The strategy is in final draft
- Currently with Places Services to be formatted professionally
- Feedback from Uttlesford District Council to be confirmed
- Building With Nature Accreditation



Building
with Nature

<https://www.buildingwithnature.org.uk>

Vision

The old Vision was:

'We will protect and grow a high quality connected green infrastructure network which extends from our city and town centres to the countryside and coast which is designed for people and wildlife whilst being self-sustaining.'

The new vision is:

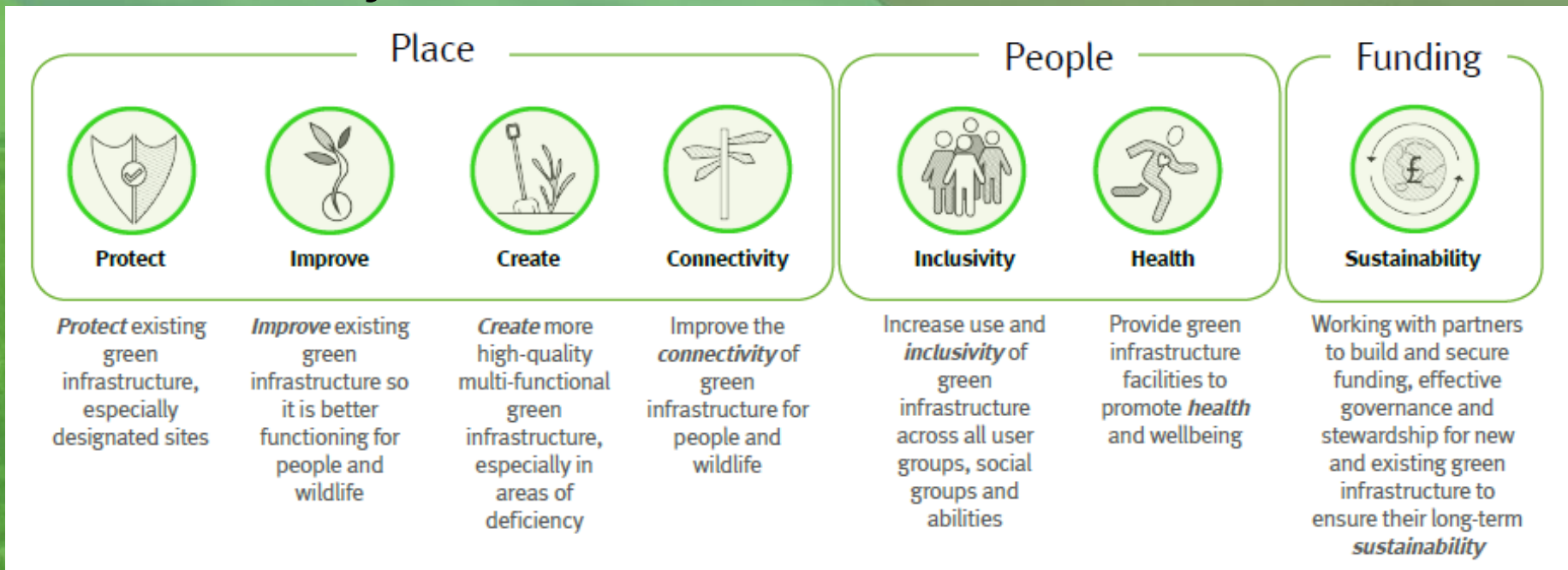
'We will protect, develop and enhance a high quality connected green infrastructure network that extends from our city and town centres, and urban areas to the countryside and coast and which is self-sustaining and is designed for people and wildlife.'

Objectives

The old Objectives



The new Objectives



Strengthening the Strategy

GI Planning Policy Matrix Assessment and workshop - <https://mainstreaminggreeninfrastructure.com/project-page.php?green-infrastructure-planning-policy-assessment-tool>

Section	Key Summary Chapter Action
Evidence	The evidence gathered in the development of this strategy can provide us with confidence that green infrastructure is already an important component of the character and success of the County. Ensuring that this continues - we will build upon the current evidence base and undertake a gap analysis for any deficits in the data (i.e. accessible and non-accessible green spaces) and green infrastructure provision.
Delivery	<ul style="list-style-type: none"> We will conserve and enhance a multi-functional green infrastructure network, by maximising opportunities for the protection, enhancement, creation and connection of our green infrastructure network to maximise the collective social, economic and environmental benefits working in partnership with stakeholders (private, public and third sectors and community groups).
Planning	<ul style="list-style-type: none"> We expect green infrastructure to be planned at the earliest opportunity and address the multiple benefits (listed in the Green Essex Strategy). We would expect all development to set out the green infrastructure “checklist” showing how each element will be substantially addressed and should follow the key green infrastructure planning principles listed under 8.1. Restoration and mitigation plans for mineral and waste sites should ensure that opportunities to create and link biodiversity and habitats are fully explored to create mitigation and environmental net gains. <p>Checklist topics include: Multiple green infrastructure functions and benefits, biodiversity, active travel and mobility, carbon sequestration, landscape, habitat connectivity, air quality, water environment, inclusivity, management and maintenance etc</p>
Highways & other routes	<ul style="list-style-type: none"> Sustain and improve existing Greenways and Highways green infrastructure network working in collaboration with partners, whilst engaging and involving Parish Councils and communities. New development will use appropriate green infrastructure design and its multi-functions that will enhance the quality ,ease of accessibility, inclusivity and connectivity to green spaces, local amenities and across the development
Coast	<ul style="list-style-type: none"> Opportunities for multifunctional green infrastructure should be maximised by developments located within the developed areas of the coast and coastal projects, such as the Coast Path in Essex. These developments should include the restoration, enhancement, connection and protection of the watercourses and coastal areas providing environmental, economic and social benefits. This should be delivered using adaptive design and in accordance with the guidance and actions set out in the Shoreline Management Plans, RAMS, Local Plans and South East Inshore Marine Plan.

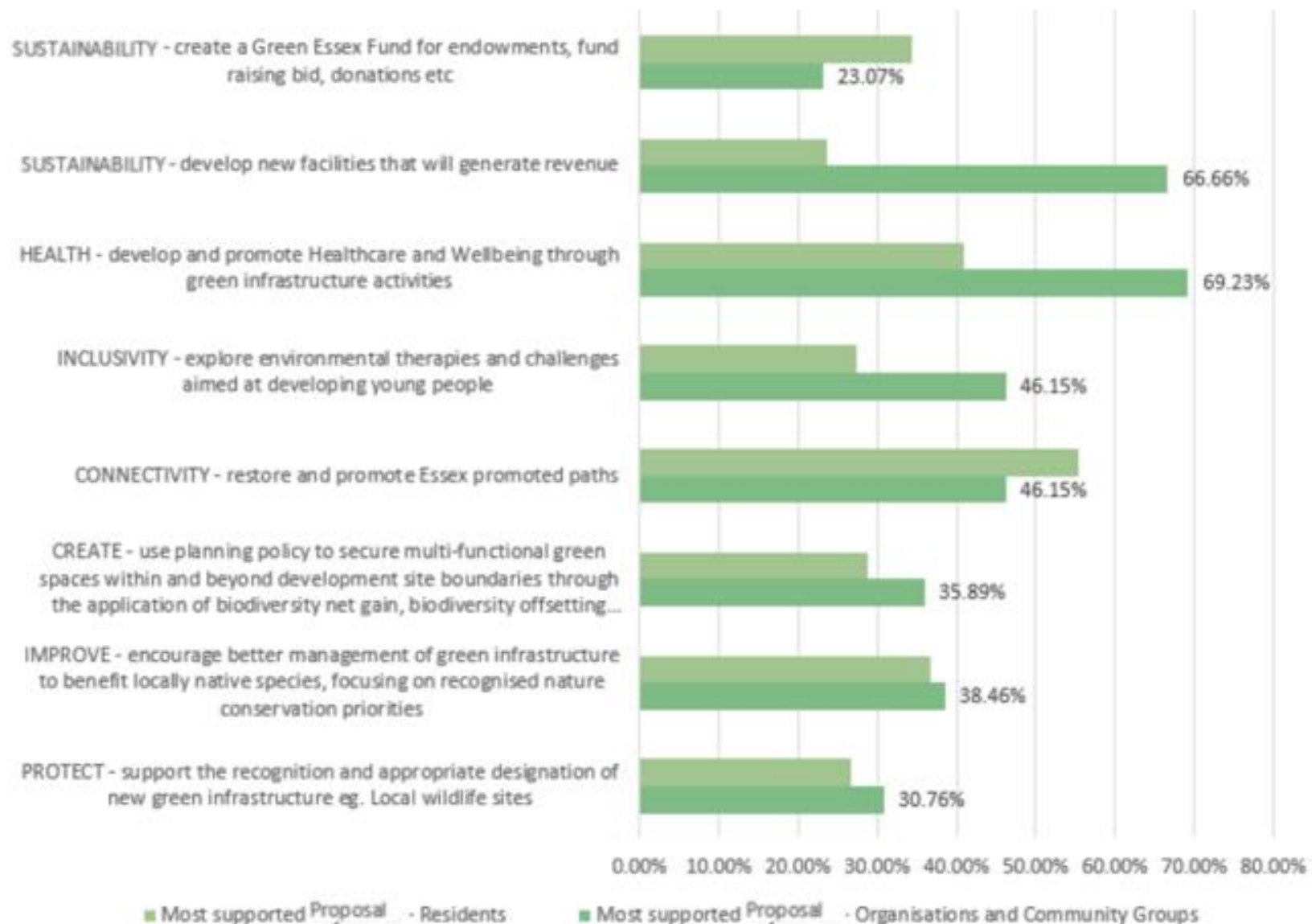
Section	Key Summary Chapter Action
Delivery Flooding	<ul style="list-style-type: none"> • All development proposal should incorporate SuDS and natural flood management techniques. This should demonstrate multifunctional green infrastructure solutions to flood management. Development should include biodiversity and open space provision, which will enhance biodiversity, natural capital and provide aesthetic and amenity value; and safe public access. These designs should draw on national and local best practice guidance and must comply with requirements set out in the Essex SuDS Guide and national policy.
Energy	<ul style="list-style-type: none"> • Promote green infrastructure: <ul style="list-style-type: none"> ○ As a mitigation tool for Energy (i.e. energy production, reduce emissions and renewable infrastructure). ○ To make urban areas liveable against the effects of climate change, through for example, insulating buildings, shading against UV rays and mitigating against the Heat Island effect. • Policies and plans should maximise green infrastructure through making connections between energy and at least three or more of the following sectors: heritage assets; recreation and access; biodiversity and social exclusion, to ensure multi- purpose and functional use.
Health & Wellbeing	<ul style="list-style-type: none"> • Promote community-led activity to enable inclusive use of green infrastructure, that will provide health and wellbeing benefits.
Education	<ul style="list-style-type: none"> • Developments to enhance school grounds for environmental education and biodiversity or open links to green spaces to provide access for existing schools. • Promote environmental education for encouraging hands-on-stewardship or restoration of green infrastructure, as well as provide opportunities for programmes such as Forest Schools and further education courses.
Agriculture	<ul style="list-style-type: none"> • Rural communities and associated stakeholders should be supported to create and enhance green infrastructure as a tool to address identified health and wellbeing needs.
Implement ation & Monitoring	<ul style="list-style-type: none"> • Green infrastructure needs continued investment and managing to ensure that the benefits from green infrastructure is maximised. This will be achieved through the creation of a Green Essex Fund and exploring other funding opportunities mentioned in this strategy. Contributions towards local green infrastructure projects will be sought where green infrastructure is provided as part of a development, applicants should also detail how it will be maintained in the long term. • We will form better partnership working across Greater Essex to deliver a green infrastructure network

Consultation Feedback

- Public Consultation May 2019
 - 931 people & 39 organisations and community groups responded to the online questionnaire
 - Further 9 organisational detailed written responses
- Key headline conclusions from the online questionnaire:
 - Most popular use is for leisure time
 - Areas of concern - Fragmentation & development growth

Of the respondents	People	Organisation & Community Groups
Agreed with both vision and objectives	53%	90%
Easier access would increase use of green space	58%	72%
Feeling safe is an important factor in using green space more	49%	51%
Agreed that objectives and proposals were deliverable	41%	72%

Consultation Feedback



Next Steps

- Governance

Sign off by Executive Director (sponsor)	Jan20
Sign Off by Portfolio Holder	Jan-20
PLT	TBC
Equality Impact Assessment	04-Feb-20
Submit report to S151 & Monitoring Officer	04-Feb-20
Report on forward Plan & Cabinet Decision Tracker	04-Feb-20
Approved report submit to cabinet member	11-Feb-20
Cabinet member submit to Leader & CE	18-Feb-20
Final report to S151 & MO	03-Mar-20
Cabinet Meeting	17-Mar-20
3 Day Call- in	20-Mar-20
If no call- in after 5pm on 3 day publish	23-Mar-20

- Partnership Engagement
- Green Essex Network
- Green Essex Foundation
- Green Essex Action Plan

Imminent Projects

- Green Infrastructure Garden Communities and Development consultation service
- Create town or village circular routes especially in areas of green infrastructure deficiency.
- Restore and Promote Essex promoted paths.



Active Projects

- Greening town centres – air pollution amelioration
- Green Essex Network
- The ECC Roof Garden project
- Canvey Make Rainwater Happy – Flood prevention
- Develop the Coast Path - “Path to Prosperity”
- The Essex Forest Project – 375,000 trees 2019-2025

Green Essex Strategy – 2019-2020

Milestones

Projects/Action	Milestones
Create a Green Essex Network to develop, improve and promote Green Essex	Create Network group and have first meeting
Greening County Hall: Working with MITIE and explore opportunities of garden roofs on ECC Estate and establish a volunteer Gardening Group	Receive permissions and support of FM and Mitie and carry out Garden design workshop with ECC employees
Continue creating green spaces which also function as Natural Flood Management and SuDs schemes	Complete 2 SuDS on Canvey

Develop the coast path in Essex

Milestones for 2019- 20

- Install 7 People counters
- Install 28 maps in Train Stations
- Establish a Hopper Bus Service servicing the Coast Path

Milestones for 2020-21

- Open first of 9 stretches of 350 miles coast
-
- Launch the Coastal Hopper Bus
- Install 72 maps at bus stops



Essex Forest Initiative

- Launched the Essex in Tree Week on the 23rd November 2019
- Planted 61 trees
- With local school children, the Leader, local Councillor, Wendy Scmitt and Andy Wright, the Chief Executive of Braintree District Council



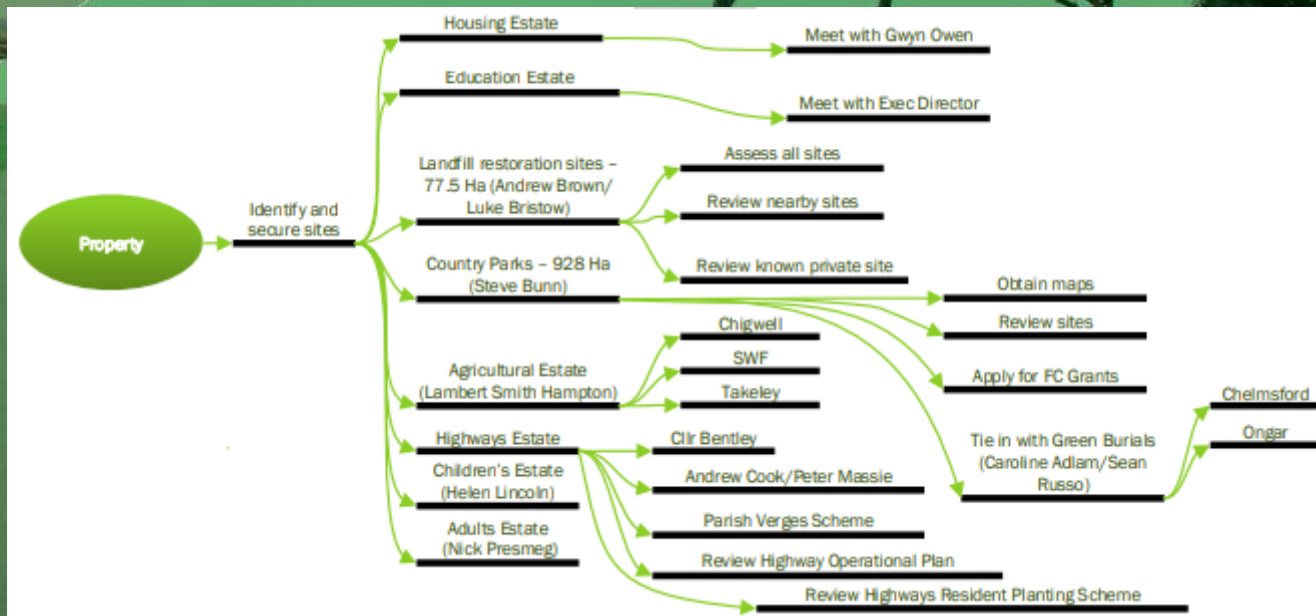
Plantings

2019-20

- Great Notley Country Park,
- Belhus Woods Country Park,
- Lubbins Park Academy School, Canvey Island,
- Park Avenue, Canvey,
- Flood alleviation tree planting schemes at Braintree, Witham, Epping and Maldon.

2020-21

- Chelmer Valley - 20,000 trees
- Former Landfill, Ongar - 20,000 trees
- Hill Farm Chigwell - 8,000 trees



Working with our partners

- District , City and Borough authorities
- Charities,
- Parishes,
- Communities
- Land owners
- Individuals



Thank You

