

# Recommissioning of Domestic Abuse Services

Clare Burrell, Head of Strategic Commissioning and Policy, Children and Families, Essex County Council

# Background

- Current services last commissioned and effective from April 2019 and end 2025
- Jointly commissioned with the Police Fire and Crime Commissioner
- ECC Public Health investment £1,644,000 p.a.
- PFCC investment £493,000 p.a.
- Compass front door for victims
- Community based support for adult victims
- Accommodation-based (refuge) support for adults
- Independent Domestic Abuse Advisors specialist support for high-risk domestic abuse victims
- Stand-alone early intervention programmes
- 2021 Domestic Abuse Act resulted in new duties for the Council
- Additional services commissioned

# 2021 New Duties

## 2021 Domestic Abuse Act new duties for ECC

- Establish a local Essex Board
- Produce a needs assessment
- Publish a domestic abuse commissioning strategy

Additional £2.890m new burdens funding for 3 years to support to victims **and their children** residing in refuge, specialist, dispersed and sanctuary accommodation, also in second stage accommodation (excluding Independent Domestic Violence Advisors)

- Advocacy support
- Prevention advice
- Specialist support for those with protected characteristics/complex needs
- Children's and young people's support including therapies and advocacy
- Housing-related support and advice
- Resettlement support

## The Act

i

The Act does not create an offence of “Domestic Abuse” but aims to:

- **Protect and support victims** – to enhance the safety of victims and the support they receive;
- **Transform the justice process** – to provide support to victims throughout the justice process and an effective response to perpetrators to end the cycle of abuse;
- **Improve performance** – to drive consistency and better performance in the response to domestic abuse;
- **Promote awareness** – put domestic abuse at the top of everybody’s agenda.
- **16+ years** as offenders/victims
- **Children** under 16 to be defined as victims



No matter if the behaviour consists of a single incident or a course of conduct, and applies to any person 16+

## Types of Abuse

Physical or sexual abuse;  
Violent or threatening behaviour  
Controlling or coercive behaviour

### **Economic abuse**

Psychological, emotional or other abuse;

## Descriptors

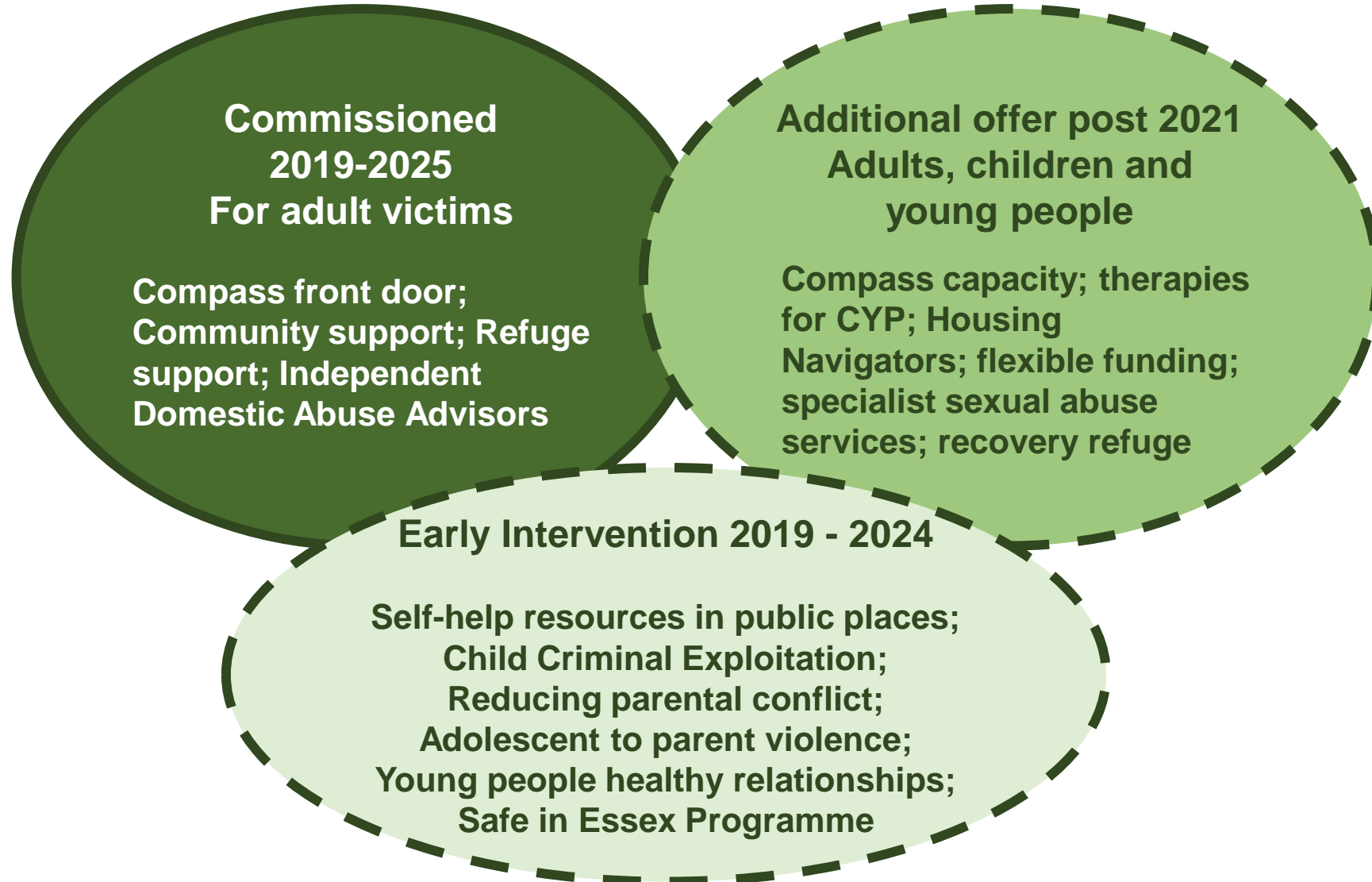
Intimate Partner Violence  
Abuse by Family Members  
Teenage Relationship Abuse

### **Adolescent to Parent Violence and Abuse**

## Links

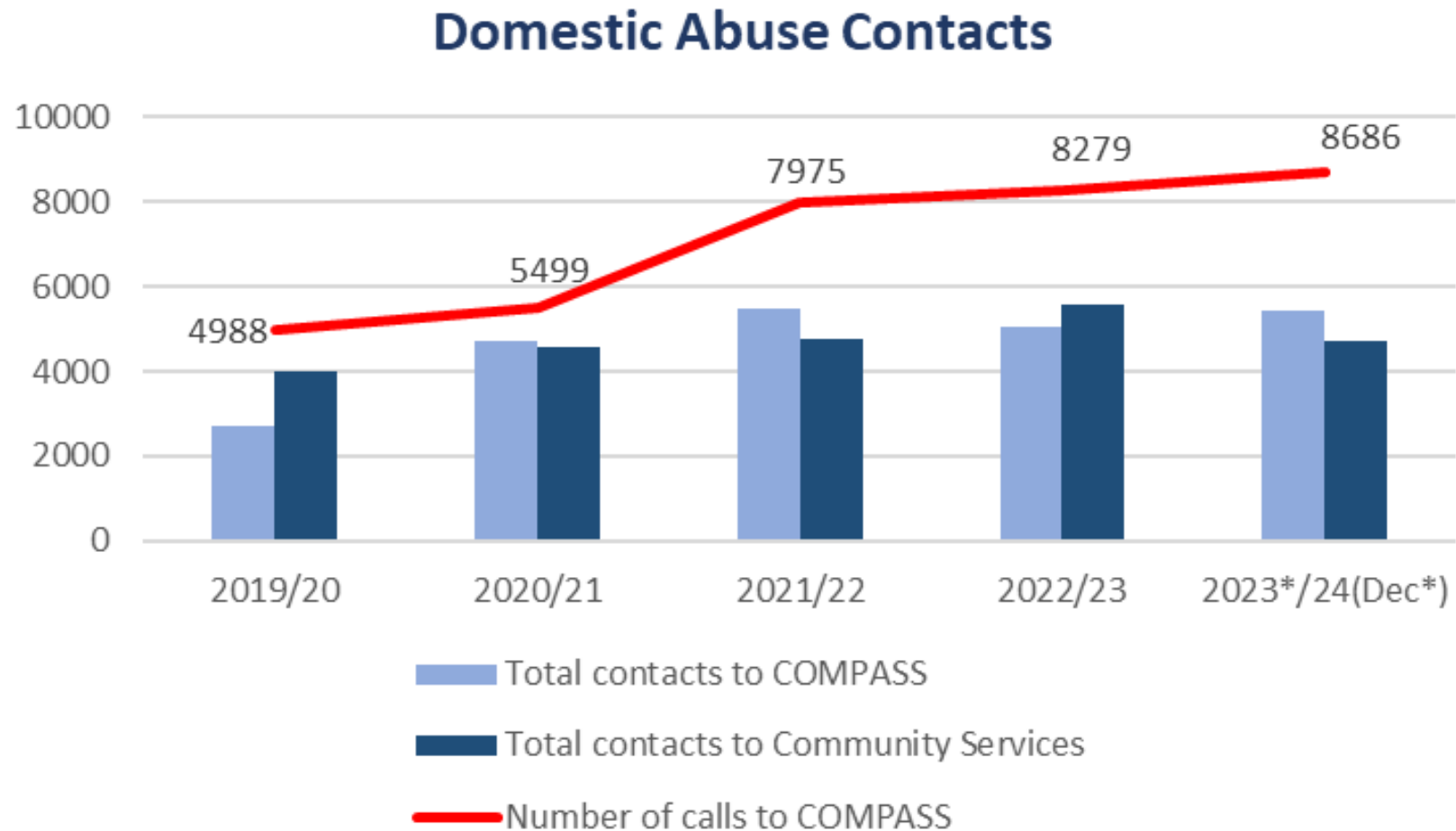
Stalking and harassment  
Honour Based Violence  
Forced marriage  
FGM  
Modern Slavery

# Current Domestic Abuse Offer



# Then 2019 and now 2024

## High level demand



# Then 2019 and now 2024

## Trends

In 2019 Colchester, Basildon and Chelmsford accounted for the top 3 areas for victims seeking support. In 2023/24 Colchester and Basildon remained the top 2, with Tendring at number 3 (previously 6th) and Chelmsford at number 4

4% (153) of victims in the community in 2019 were men. The numbers have increased slowly year on year, with men representing 6% (281) in 2023/24

10% (472) of victims in the community in 2023/24 were Black African/Caribbean, Asian and other multiple ethnic groups. These demographics have been consistent since each year since 2019

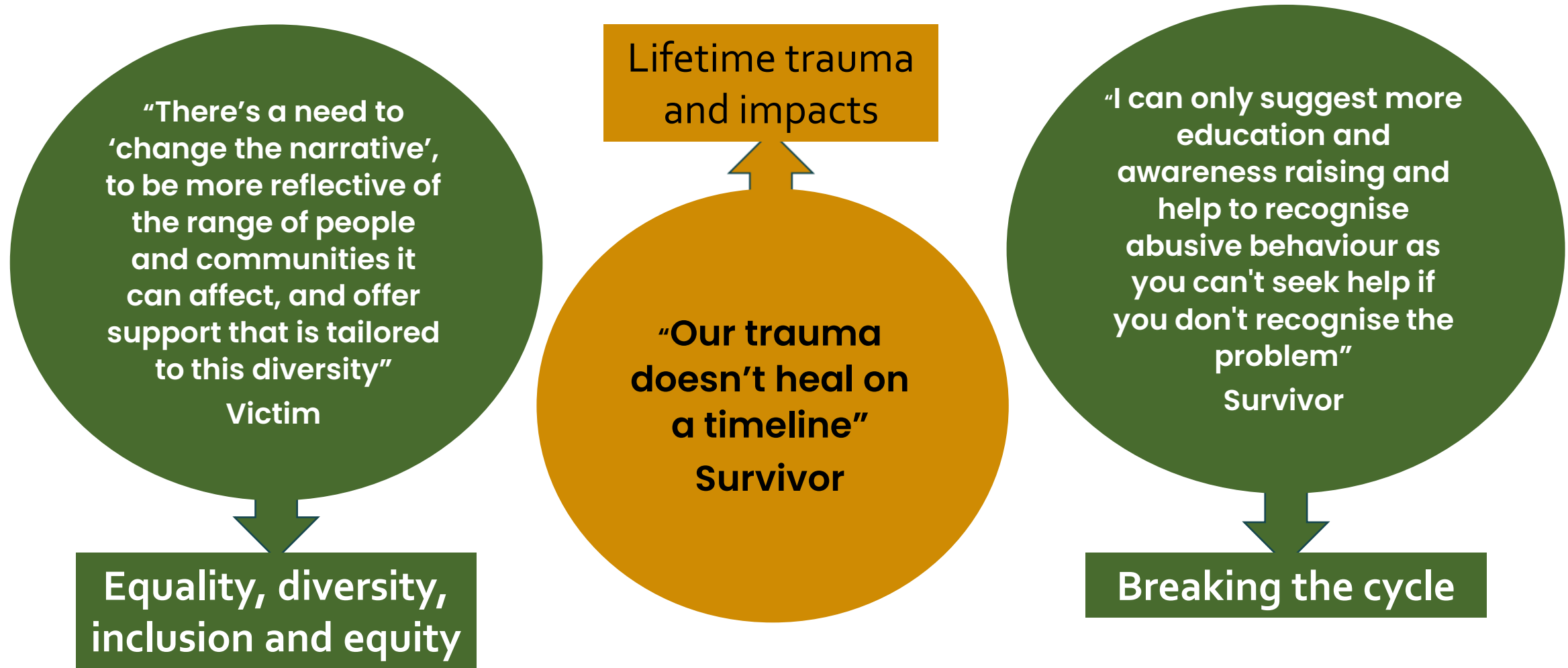
22% (1,036) of victims in the community in 2023/24 identified as having a disability. This is consistent with previous years

31 – 35-year-olds are the primary age group each year, with 65+ years the lowest represented group; no significant changes each year

In 2019 the average case length for high-risk victims was 3 months, this has increased to an average of 6 months in 2023/24, primarily due to the increase in complexities and the backlog in cases going to court



# 2022 Research Insight



Essex County Council

Probation  
Service



**ESSEX  
POLICE**  
Protecting and serving Essex



Southend-on-Sea  
City Council



thurrock.gov.uk

**PFCC**  
POLICE, FIRE AND CRIME  
COMMISSIONER FOR ESSEX

# Pan Essex Domestic Abuse Commissioning Collaborative

## PEDACC Team

- **Essex County Council – Lead Commissioner**
- Southend City Council
- Thurrock Council
- Police Fire and Crime Commissioner
- Essex Police
- Probation
- SETDAB Partnership Lead

# The co-designed model for Pan Essex

Early Intervention and Prevention (Essex) preventative programmes of work to ensure de-escalation of conflict and aggression within households and positive behaviour programmes for young people.

## Central Point of Contact (SET)

for anyone with concerns of domestic abuse, including professionals, victims, survivors, and perpetrators. It will offer triage, information, advice, guidance and where needed onwards referral for support.

### Support in Safe Accommodation (SET)

Specialist support for high risk victims

### Community Based Support (SET)

for victims Safety planning, practical and emotional support

### Programmes and support for perpetrators (SET)

both early help and specialist support

### Early Help Whole Family Working including the perpetrator (Essex)



Essex County Council

Probation Service



ESSEX POLICE  
Protecting and serving Essex

Southend-on-Sea  
City Council

thurrock.gov.uk

PFCC  
POLICE, FIRE AND CRIME  
COMMISSIONER FOR ESSEX

# Benefits of model and joint approach

- Meets the requirements within the Domestic Abuse Act and national guidance
- Efficiency savings through aligned budgets and joint commissioning
- Improves pathways to support for all those impacted by domestic abuse, including perpetrators.
- Consistent service offer and quality standards across greater Essex
- Co-ordination of services supporting transitions across greater Essex where victims are fleeing the perpetrator yet need to keep local safe connections
- Provides a whole family approach, outside of statutory services, to domestic abuse



Essex County Council

Probation  
Service



 [thurrock.gov.uk](http://thurrock.gov.uk)

**PFCC**  
POLICE, FIRE AND CRIME  
COMMISSIONER FOR ESSEX