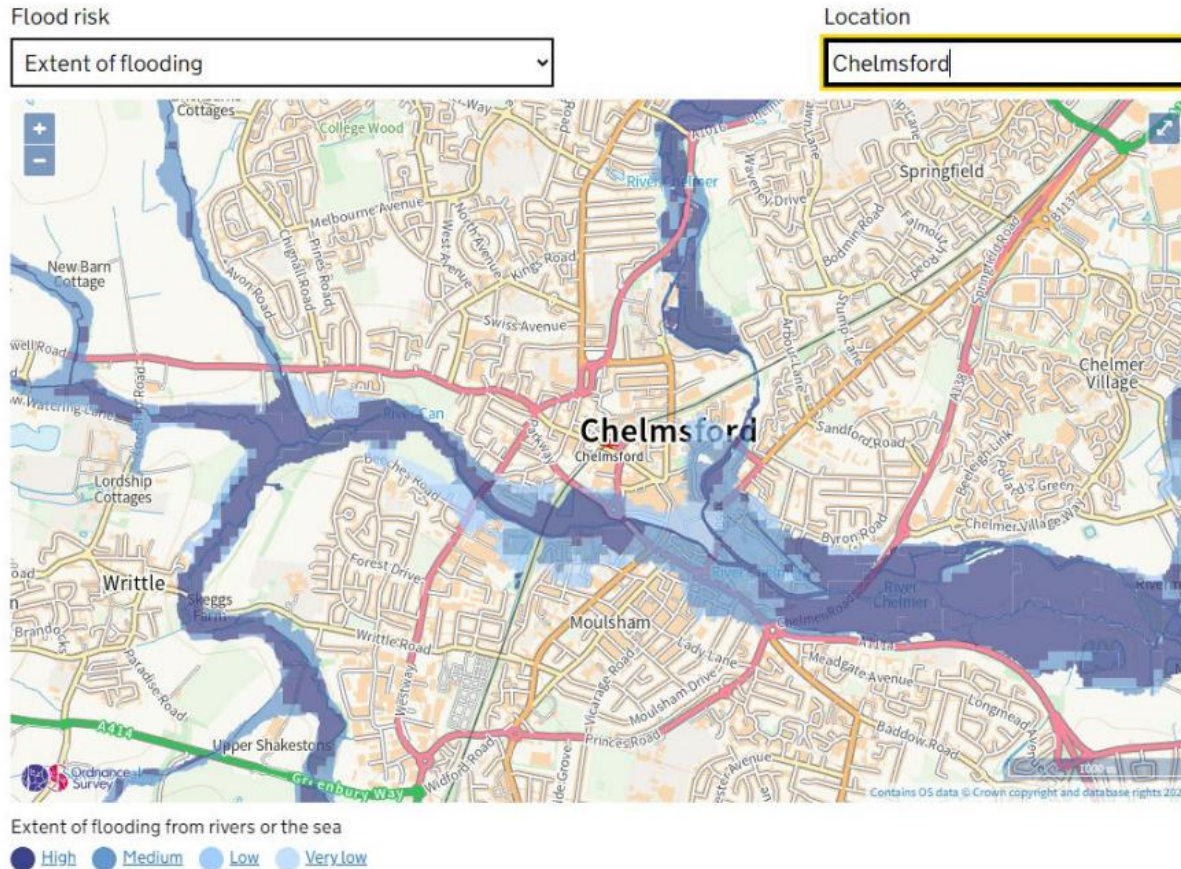




# National Flood Risk Assessment (NaFRA2) Update

# What is NaFRA2



- It is our National Flood Risk Assessment ...Version 2
- The project involves updating our public facing mapping products including the flood map, the risk of flooding from rivers and the sea (RoFRS), and the risk of flooding from surface water (RoFSW).

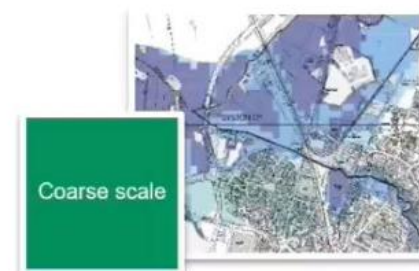
# Benefits – NaFRA2 will provide:

1

A single source of richer flood risk, hazard and impact data, suitable to use at a local scale. This will enable efficiencies in the way flood risk information is handled and considered.

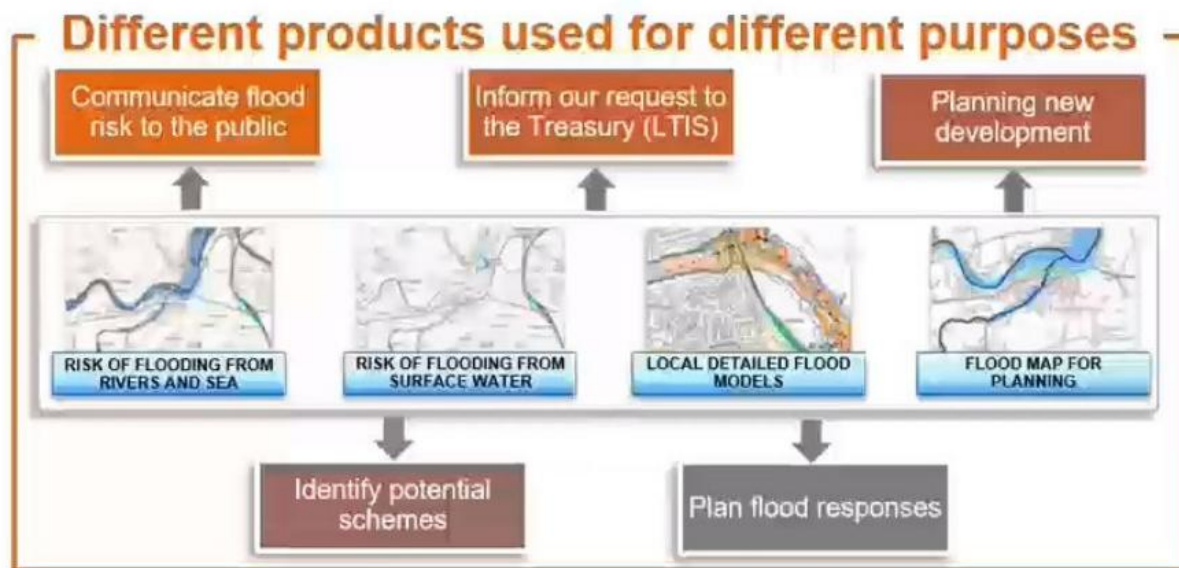
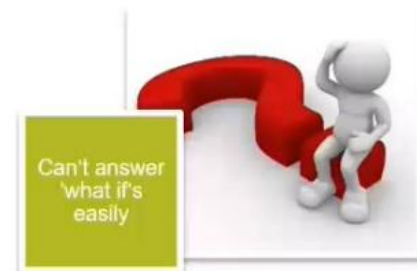
2

Outputs will be more accurate and precise, and will contain information on climate change.

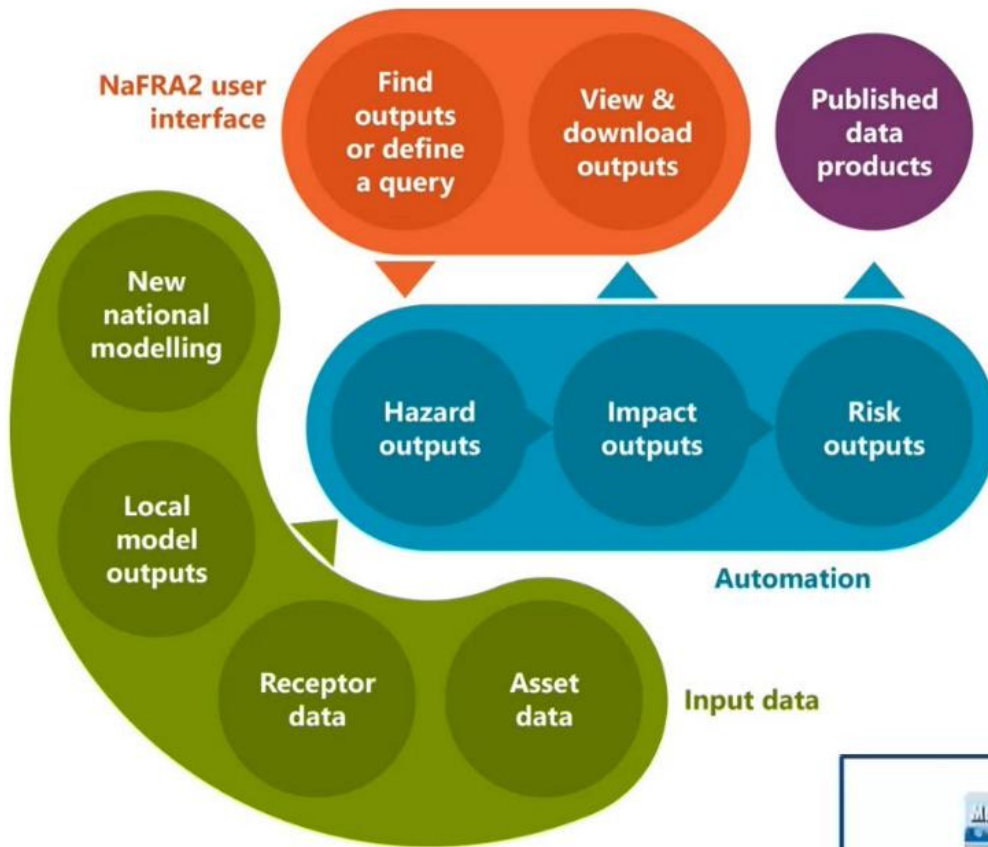


# Benefits – NaFRA2 will provide:

- Improved evidence to prioritise investment in building flood resilience, asset planning and incident management.
- NaFRA2 is a live operational system.







Outputs will be composed of two main modelling products:

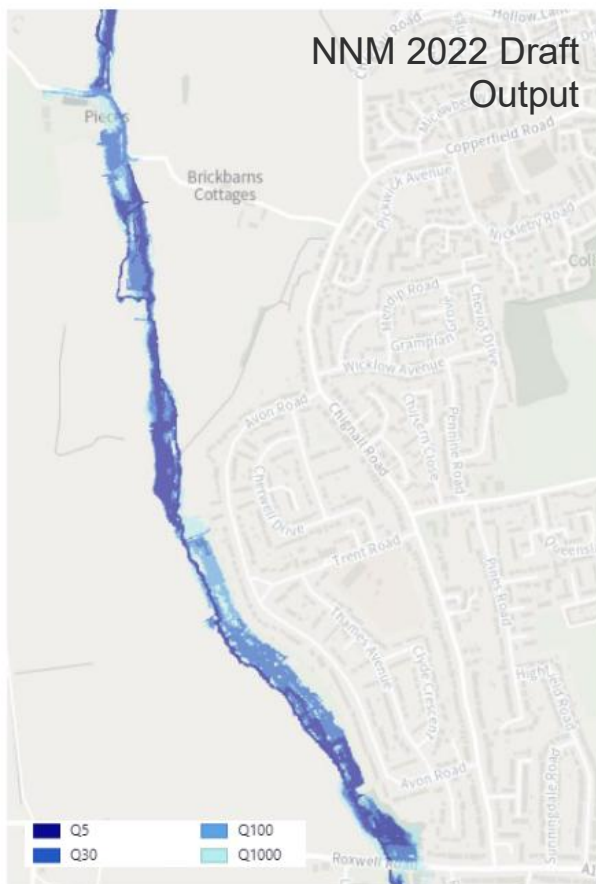
- Local detailed fluvial, coastal and surface water flood risk models developed by the Environment Agency and local authorities.
- New National Modelling (NNM), an simplified and generalised model of the entire country.

### Local Detailed Flood Models



- Over 1800 local detailed flood models
- Contain a wealth of information
- Range of scenarios (e.g. probabilities / climate change / defended / undefended / breach)

# Chignall Brook



Improved:

- modelling techniques (2D)
- Improved input data (hydrology and terrain model)
- Improved spatial resolution (up to 2m vs. 50m)
- Improved structure and defence representation

# NaFRA2 Publication and Reviews

- The Environment Agency is currently working towards publishing updated products in late 2024.
- Next review window begins in early November and concludes in mid January.
- Review will involve reviewing outputs to confirm that they align with local knowledge.

## PLEASE NOTE:

- Model outputs are only as good as the data put in.
- Large areas will still be based on national-scale generalised modelling. Local models will still need to be developed.



# Thank you! – Any Questions?

