

Report title: Southend Essex and Thurrock Mental Health Strategy	
Report to: Essex Health and Wellbeing Strategy	
Report author: Moira McGrath Director of Commissioning	
Date: 19 July 2023	For: Discussion
Enquiries to: Nick Presmeg, Executive Director for Adult Social Care	
County Divisions affected: All Essex	

1. Purpose of the report

To provide an update to the Essex Health and Wellbeing Board on development of the Southend Essex and Thurrock Mental Health Strategy 2023-2028 which is currently undergoing formal governance processes with statutory partners, and to seek endorsement from the Health and Wellbeing Board subject to formal governance signoff by the individual statutory partners

2. Links to Health and Wellbeing Board Priorities

- 2.1 When people suffer poor mental health, it is essential that Essex County Council and our partner organisations are able to help ensure they have the support and guidance they need.
- 2.2 To make sure this happens, Essex County council, along with our partners at Southend City Council, Thurrock Council and the ICB's, have developed an All-Age Mental Health Strategy, which, through our partnership, will cover the entire Greater Essex area.
- 2.3 It identifies, and provides a response to, the key issues and challenges for those with mental ill health and is closely aligned with existing national guidelines and the strategies of our three local Integrated Care Partnerships (ICPs).
- 2.4 The draft strategy is currently undergoing review and sign off by individual organisations involved in the development of the strategy and seeking their approval for the establishment of a Strategy Implementation Group to support and co-ordinate collaborative working across partners to implement the strategy.

3 Recommendations

- 3.1 That the board endorses the draft strategy at appendix 1 subject to formal sign off and adoption by individual partner organisations including Essex County

Council, Southend City Council, Thurrock Council and the three NHS Integrated Care Boards covering the Greater Essex Footprint.

- 3.2 That the board discuss and agree what the short-term issues and challenges are in achieving the overarching outcomes and where their organisations may be able to contribute to achieving success.

4 Background and Proposal

- 4.1 Services for people with mental health problems are provided by local authorities, as part of public health and social care functions as well as by the NHS. Essex County Council (the Council) have worked with partners across Southend, Essex, and Thurrock (SET) to:

- Understand our population's needs around mental health informed by the Essex Joint Strategic Needs Assessment (JSNA), national and local data and extensive engagement with local professionals, partners and service users.
- Respond to the identified needs within the context of national policy and local ICP strategies through developing a revised 'all age' strategy building on the 2017 version
- Explore options for working together to support implementation of the strategy
- Develop supporting enabler and implementation plans provides supported accommodation for people with mental health needs.

- 4.2 The core partners have included:

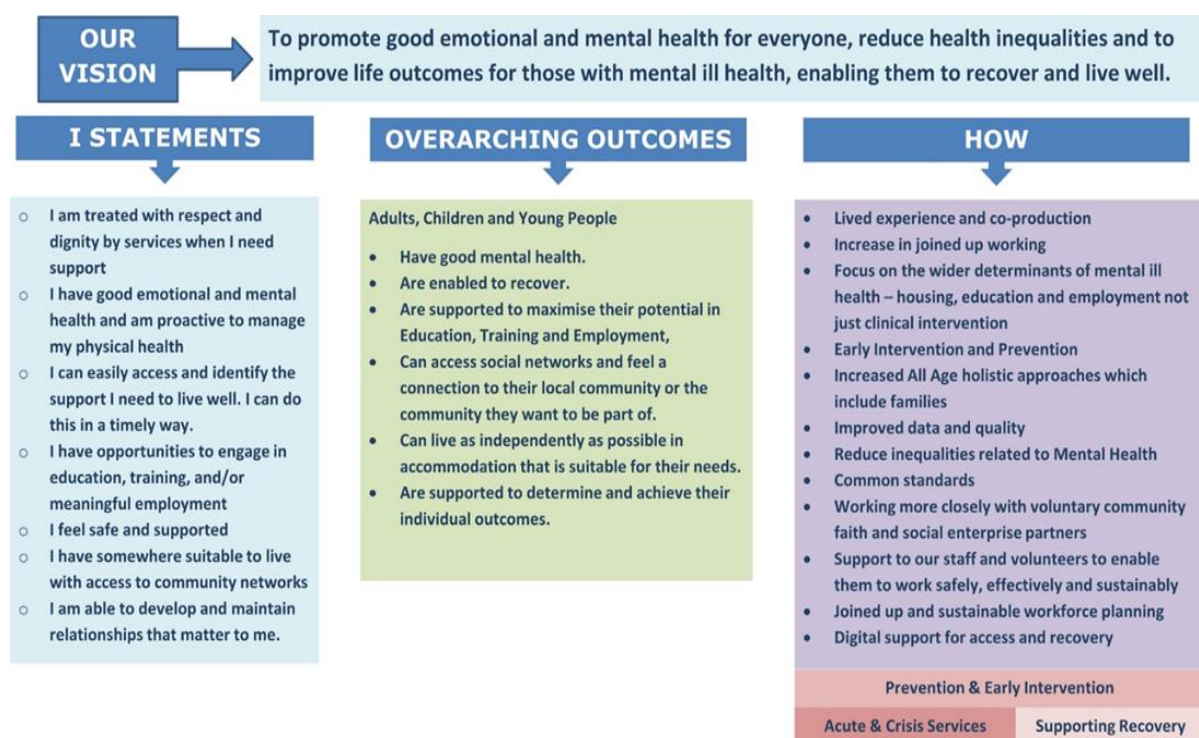
- Suffolk and North East Essex ICB
- Hertfordshire and West Essex ICB
- Mid and South Essex ICB (MSE)
- Southend on Sea City Council (SCC)
- Essex County Council (ECC)
- Thurrock Council (TC)
- Essex Partnership University NHS Foundation Trust (EPUT) – provider of adult services.
- North East London NHS Foundation Trust (NELFT) – provider of children and young people's services.

In addition, Essex Police (EP) have been engaged and are keen to be part of the arrangements established. A range of voluntary, community, faith, and social enterprise (VCFSE) sector organisations have also been engaged in developing the strategy and will continue to be key partners in the next phase of implementation.

- 4.3 The strategy has been developed based on the population health needs analysis and building on previous work. It aims to co-ordinate the approach across the Southend Essex and Thurrock aligned with the local strategies produced by the three Integrated Care Boards, covering Mid and South Essex, North East Essex

(part of the Suffolk and NEE ICS) and West Essex (part of the Hertfordshire and West Essex ICS). The three NHS Long Term Plans are a framework which set out a list of NHS England priorities, predominately for NHS providers, across a range of themes such as crisis and community provision.

- 4.4 The strategy is deliberately brief and lays out the ‘all age’ vision and principles we will work to and the outcomes to be achieved over the next five years, guided by a set of I-Statements. It is shown in summary form below.



Implementation

- 4.5 A significant challenge of the previous 2017 Strategy was not its content - much is still relevant - but its implementation. The complexity of the local socio-political geography and changing NHS landscape made a joined-up approach challenging. In recognition of the complexity the three local Integrated Care Systems have previously commissioned a Mental Health Taskforce Review. This review process has helped to develop a more joined up approach across the three ICBs, which provides a good platform for further collaborative working across partners.
- 4.6 System partners have therefore been determined to develop effective mechanisms for ensuring implementation of the strategy whilst recognising most of the delivery will continue to be at local Place level with ICBs, Local authorities, providers, voluntary, community, faith and social enterprises and other partners working together with people with lived experience, typically in local Alliances.

- 4.7 ECC Cabinet is asked to agree that the Council will take part in a proposed 'Southend, Essex and Thurrock All-Age MH Strategy Implementation Group' (SIG) focussed on overseeing a limited range of key strategic issues around overall strategy delivery and SET system development with partners sharing leadership of individual workstreams as appropriate. It will build on the existing informal working arrangements established for oversight of the strategy development itself.
- 4.8 The scope of the strategy Implementation Group would be to have oversight and monitoring of the overall SET All Age mental Health Strategy, including the delivery of SET level outcomes for specialist services (Eating Disorders, peri-natal, Personality disorder and inpatient and community bed based care), and oversee the development of local strategy delivery plans which wider stakeholders such as the district, city and borough councils and local voluntary sector will be involved in. The membership will include senior representatives from the core partners listed in 3.2, Essex Police, Healthwatch and people with lived experience.
- 4.9 There has been no public consultation on the draft strategy.

5 Next steps

- 5.1 Subject to sign off by all Partners:
- The Southend, Essex and Thurrock All-Age MH Strategy will be published and shared with the public and partners.
 - The Southend, Essex and Thurrock All-Age MH Strategy Implementation Group' will be formally established and will develop a work programme and supporting working arrangements.
 - Regular 6 monthly reports on strategy Implementation progress will be produced by Strategy Implementation Group for each partner.

6 Issues for Consideration

6.1 Equality and Diversity Considerations

- 6.1.1 The Public Sector Equality Duty applies to the Council when it makes decisions. The duty requires us to have regard to the need to:
- (a) Eliminate unlawful discrimination, harassment and victimisation and other behaviour prohibited by the Act. In summary, the Act makes discrimination etc. on the grounds of a protected characteristic unlawful
 - (b) Advance equality of opportunity between people who share a protected characteristic and those who do not.
 - (c) Foster good relations between people who share a protected characteristic and those who do not including tackling prejudice and promoting understanding.

6.1.2 The protected characteristics are age, disability, gender reassignment, pregnancy and maternity, marriage and civil partnership, race, religion or belief, gender, and sexual orientation. The Act states that 'marriage and civil partnership' is not a relevant protected characteristic for (b) or (c) although it is relevant for (a).

6.1.3 The equality impact assessment indicates that the proposals in this report will not have a disproportionately adverse impact on any people with a particular characteristic.

6 List of Appendices

Draft Strategy



Southend Essex and
Thurrock Mental Heal

Equalities Comprehensive Impact Assessment



ECIA509072287 -
Completed ECIA - Sol

7 List of Background Papers

None