

---

# Place Services and Economic Growth Policy and Scrutiny Committee

**Adam Bryan**  
Chief Executive Officer  
South East LEP

26<sup>th</sup> September 2019





**SOUTH EAST**  
LOCAL ENTERPRISE  
PARTNERSHIP

## SELEP overall



- 1 of 38 LEPs
- £580m Growth Deal / Local Growth Fund
- £180m European Structural Investment Funds
- 8 ports
- 9 university campuses
- 165,000 VAT registered businesses
- 4.23m people
- £90bn GVA
- Small team in County Hall

## Together: the story so far...

- **Delivery** of Local Growth Fund
- Growing Places Fund
- Innovating with our **Sector Support-Fund**
- Creative Prospectus and the success of **SECEN**
- **4 Enterprise Zones** offering a bespoke approach
- **Growth Hub** model which is locally defined at the point of delivery
- Addressing coastal challenges with joint work
- Leading two other LEPs in the **tri-LEP Energy Strategy**
- Skills Strategy and **Digital Skills Partnership** pilot
- Maximising ESIF
- **Accountability** Board

## Challenges Ahead



- 2019/20 – a year of **transition**
- Changes building on **strong foundations** put in place over the last few years
- Changes necessary so that we are well positioned to benefit from new **opportunities**: EU Exit, UKSPF, etc





**SOUTH EAST**  
LOCAL ENTERPRISE  
PARTNERSHIP

# LEP Review

## What we need to do...

**28 Member Board to 20 (+ 5)**

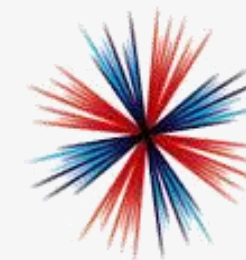
**Move to 2/3rds Business Representation**

**Adopt a legal personality**

**Improve the diversity of our representation**



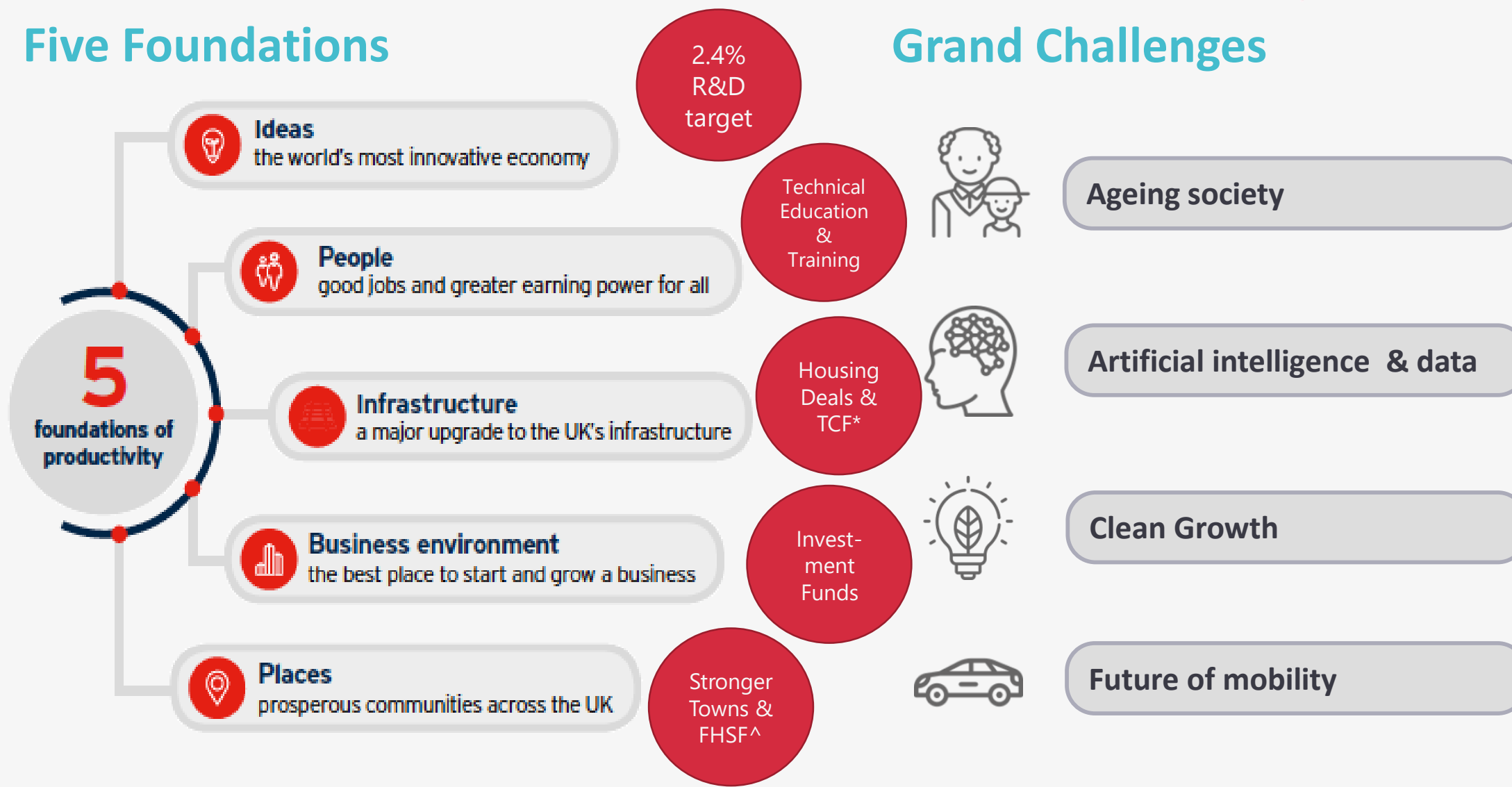
**SOUTH EAST**  
LOCAL ENTERPRISE  
PARTNERSHIP



**INDUSTRIAL  
STRATEGY**

## Five Foundations

## Grand Challenges



## What is our productivity challenge ?



### Ideas

Business capacity for innovation not as high as it could be within and across sectors

R&D expenditure is relatively low

Defining sectors with the highest productivity gain potential & how to enhance this

How to benefit from neighbouring London & being a gateway to world



### People

Lower skills levels than national and regional, 175,000 with no quals & only 32% at L4+

Adults in low value jobs and unable to progress – limited opportunities to retrain – lifelong learning

Growing vacancies in key sectors requiring technical skills. No IoT

Complex skills system & flatline of apprenticeships



### Infrastructure

Strong transport links to London/ continent but need investment in key arteries - priorities

Acceleration of housing and affordable housing

Improved public transport connectivity doesn't benefit all

Accelerating digital infrastructure to support productivity priorities



### Business Env.

Vast majority of 165,000 VAT registered businesses are micro – isolation, skills, premises

Ability of SME's to adopt new tech e.g. green/AI

Access to finance

Supply chain collaboration & collaborations for growth

Suitable workspace/ grow on space



### Place

Large & diverse, made up of cities, towns & rural

Largest LEP coastline

Housing shortages

Rural/coastal connectivity, regen & resilience

Impact of climate change

Understanding the 'economic story' of place making - data



## GVA PER FILLED JOB



## GVA PER HOUR WORKED



## GROSS WEEKLY RESIDENT PAY



## GROSS WEEKLY WORK BASED PAY



Ranked by top 10 LEPs

## GROWTH BUSINESSES & SCALE UP RATES

% INCREASE



## SKILLS LEVELS





## What are our key productivity opportunities ?



### Ideas

Advance the role of EZ

Create an innovation board/ forum

Increase R&D spend – business & HE

Advance digital tech (application of)

Sector/cluster approach e.g. agri-tech & links to London/ Cambridge



### People

Develop Leadership & Management Skills in SME's

Expand digital skills development – sectors/rural/coastal?

Support businesses with training & apprenticeship growth



### Infrastructure

LTX

HS1 from East Sussex  
Extension of Crossrail to Ebbsfleet  
Connectivity to Garden Communities

Road and rail access for the major ports & airports

Unlock potential of our ports

Investment in green



### Business Env.

Creation of future/grow on workspace – Garden Communities, High St

Collaboration on R&D funding & commercialization of

Boosting high growth start and scale up enterprises – Growth Hubs, Universities



### Place

Develop sustainable garden communities, through innovative place making & as a testbed for new design & construction innovation

Creation of a Tourism Zone (creative & cultural)

Boosting the product innovation leaders as key sectors to place making\*



SOUTH EAST  
LOCAL ENTERPRISE  
PARTNERSHIP

## 2018 Highlights

Spend of  
**£88.3m LGF**

SELEP **Skills  
Strategy**  
and **Energy  
Strategy** launch

New wave of  
Sector Support  
Fund projects

**SELEP Economic  
Strategy  
Statement** agreed

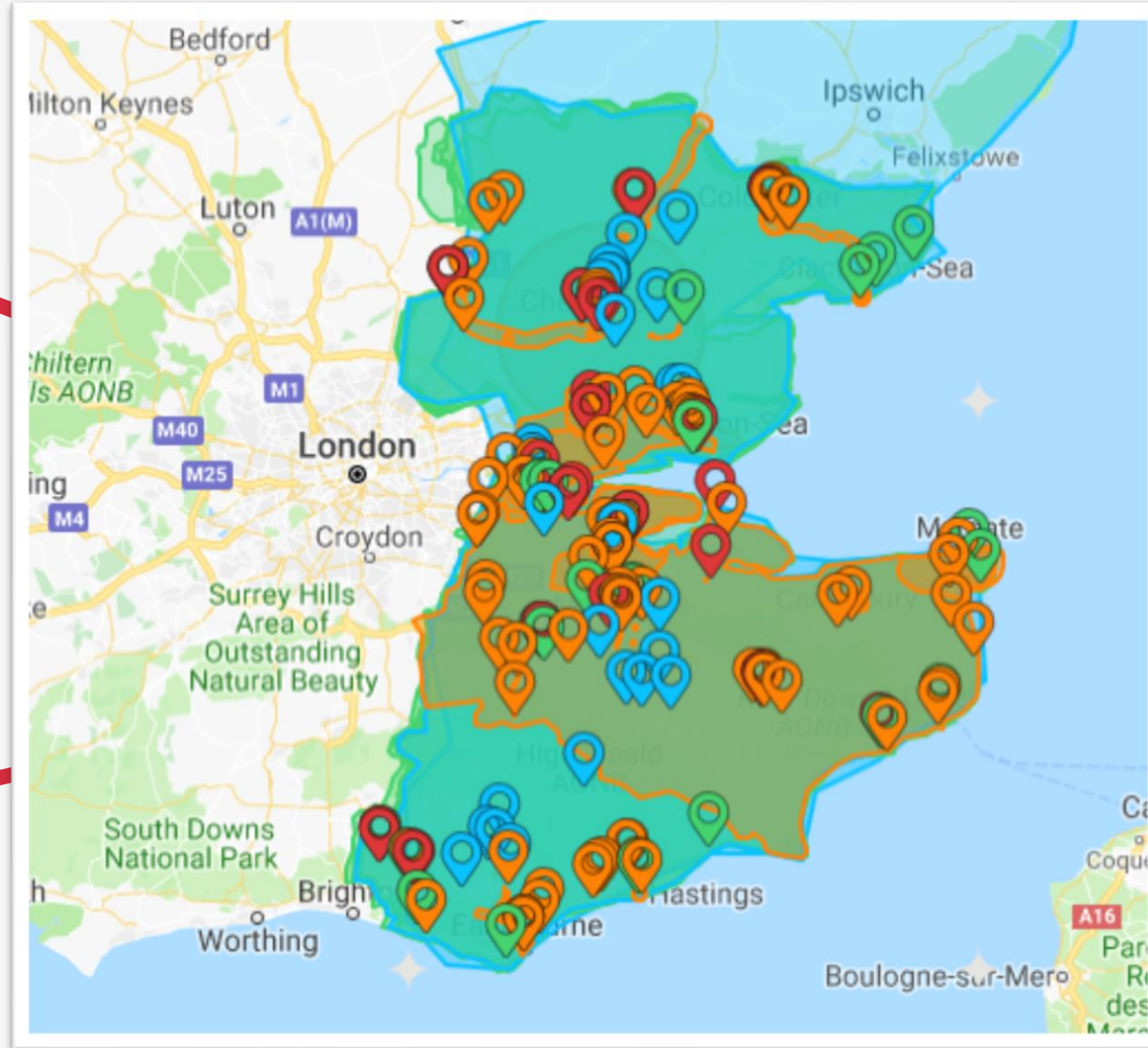


**SOUTH EAST**  
LOCAL ENTERPRISE  
PARTNERSHIP

## SELEP's Investment

**107 Local  
Growth Fund  
projects**

**21 Growing  
Places Fund  
projects**



**10 Sector  
Support Fund  
projects**

**33 Capital Skills  
Projects**



## Local Growth Fund (LGF)

<b>Total LGF projects</b>  <b>107</b>	<b>Expected outcomes</b>  Delivery of 78,000 jobs and 29,000 homes
Investing in skills, transport, commercial space and business growth	<b>Total LGF allocation</b>  <b>£570m</b>

# Local Growth Fund (LGF)

What have we achieved to date...



Spend of **£332.5m** LGF to date



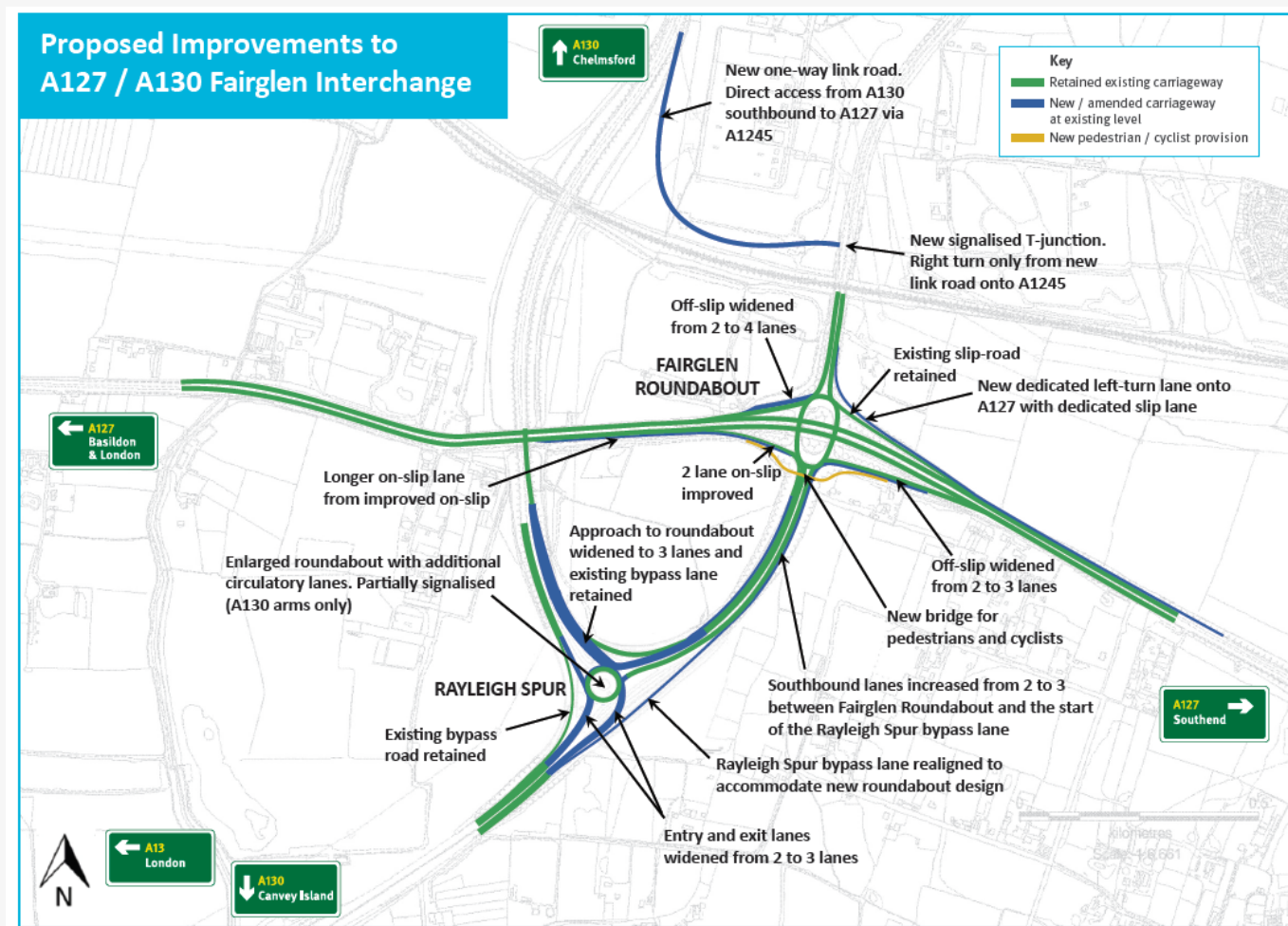
Completion of over 28 projects



Real impact on the ground  
13,475 jobs and 8842 jobs



## A127 Fairglen Interchange and New Link Road (£21.2m)





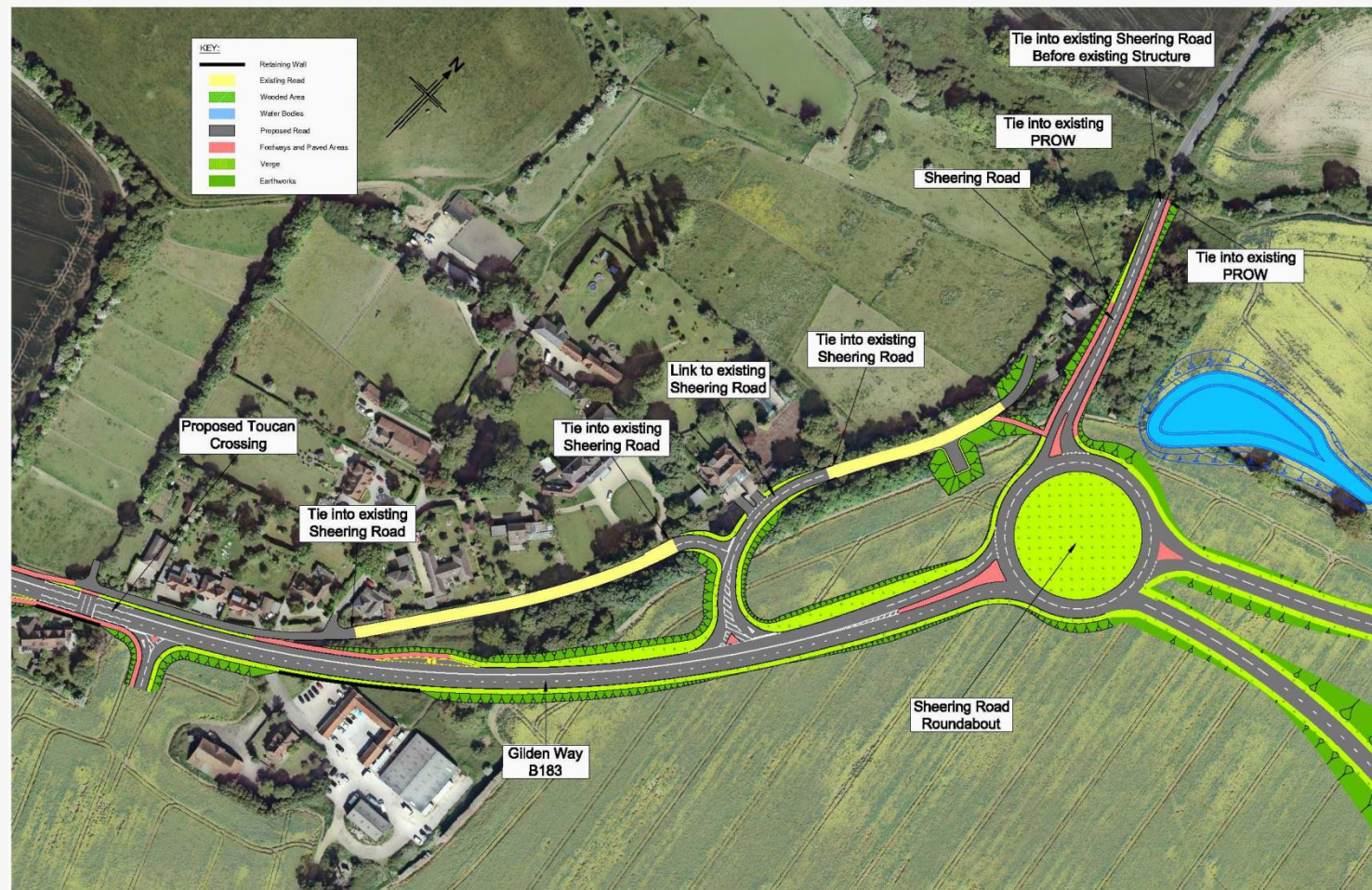
# Local Growth Fund (LGF)

## Beaulieu Park Railway Station (£12m LGF)





## Gilden Way Upgrades, Harlow (£5m LGF)





# Local Growth Fund (LGF)

## Innovation Centre, University of Essex



Completed in 2018  
£2m LGF and £10m  
local match



# Local Growth Fund (LGF)

## Mercury Theatre, Colchester (£1m LGF)





**SOUTH EAST**  
LOCAL ENTERPRISE  
PARTNERSHIP

## Growing Places Fund (GPF)

**Total GPF projects**

**21**

**Outcomes to date**

**1,877 jobs**

**1,252 homes**

**Repayments to date**

**£17.672m**

**Total GPF allocation**

**£49.2m**

## What comes next

- Investment in more **Essex** projects
- Delivery of **Local Industrial Strategy**
- Spend of £131.7m LGF in 2019/20
- Joint work around **Brexit** readiness
- Revolving of **GPF**
- Extension to **Digital Skills Partnership** pilot
- Influence policy around funding
- Extend working with neighbouring areas





## Aims for 19/20 and beyond

- The best possible **Local Industrial Strategy** and one which is distinct
- A system of **governance** which is appropriate and respectful
- Delivery of **infrastructure** solutions which benefit us
- Securing future **investment** into the area – from all sources

