



*Over the next 10 years we will work as a partnership to ensure:*

*Rivers and wetlands are restored.*

*Water resources can meet human demands without compromising the needs of wildlife and habitats in a changing climate.*

*The challenges and impacts of climate change and population growth are being addressed through innovative adaptation and mitigation.*

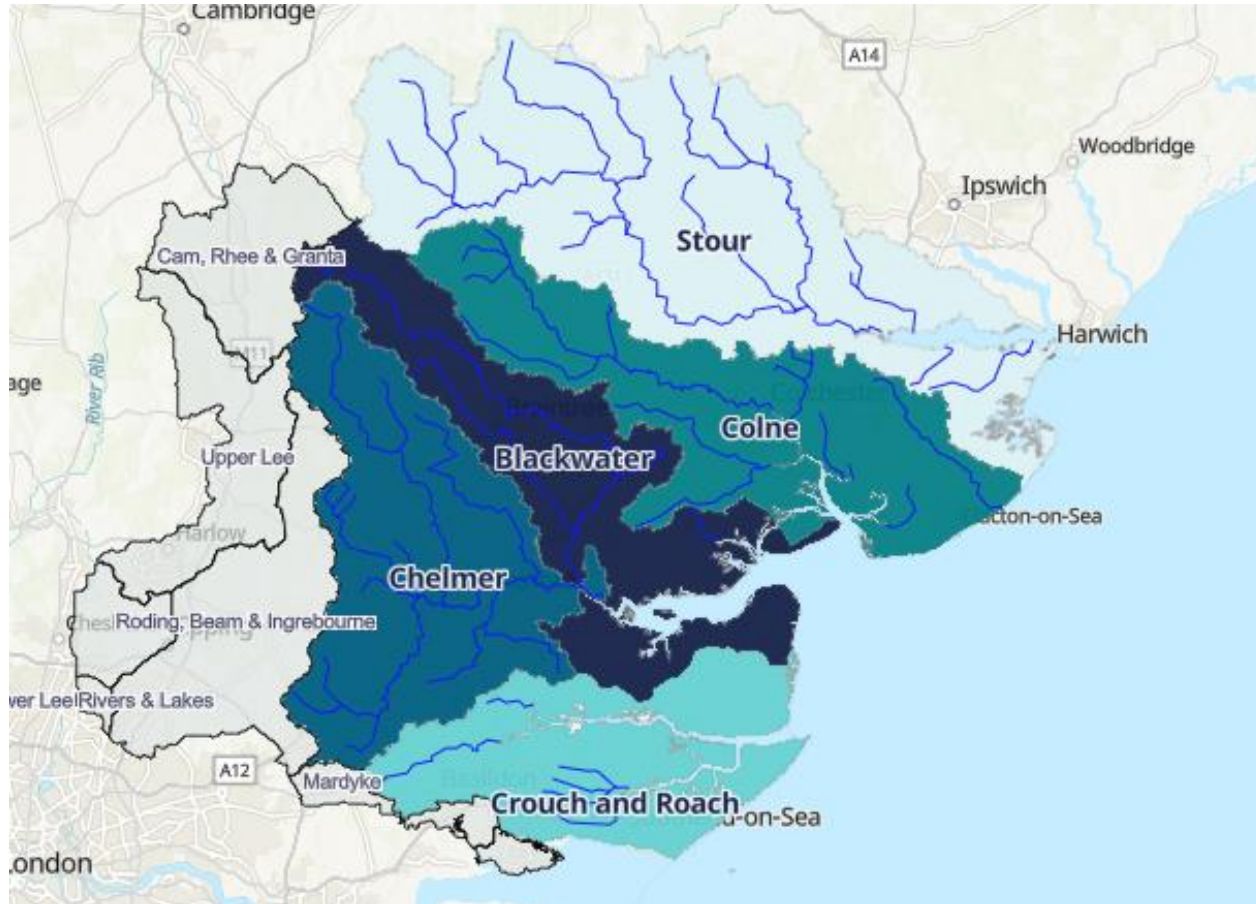
**Dr. Helen Dangerfield**

Director, Essex and Suffolk Rivers Trust

Catchment Host for the Combined Essex Catchment Partnership, Essex Rivers Hub



# Catchment partnership

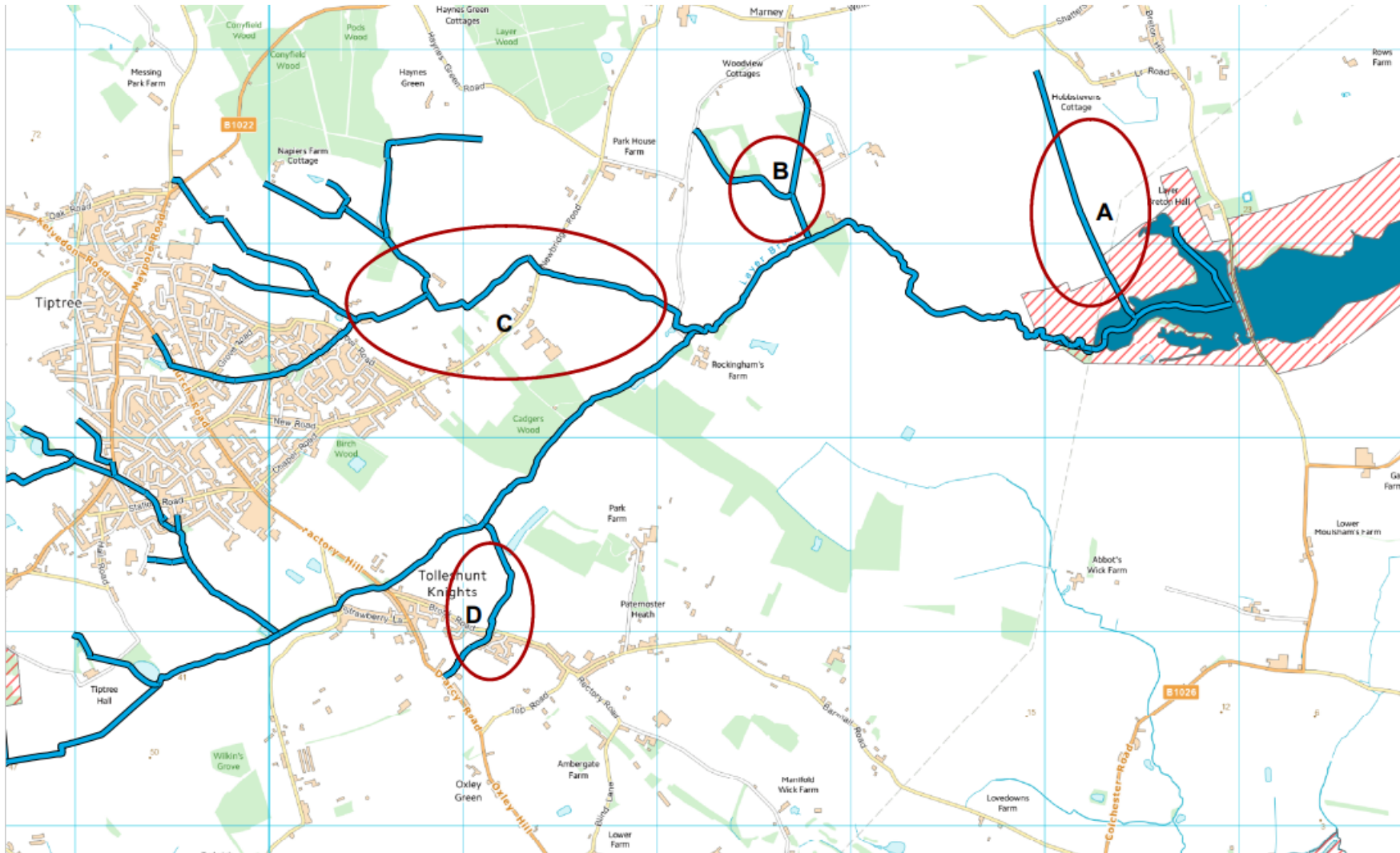


[www.essexrivershub.org.uk](http://www.essexrivershub.org.uk)

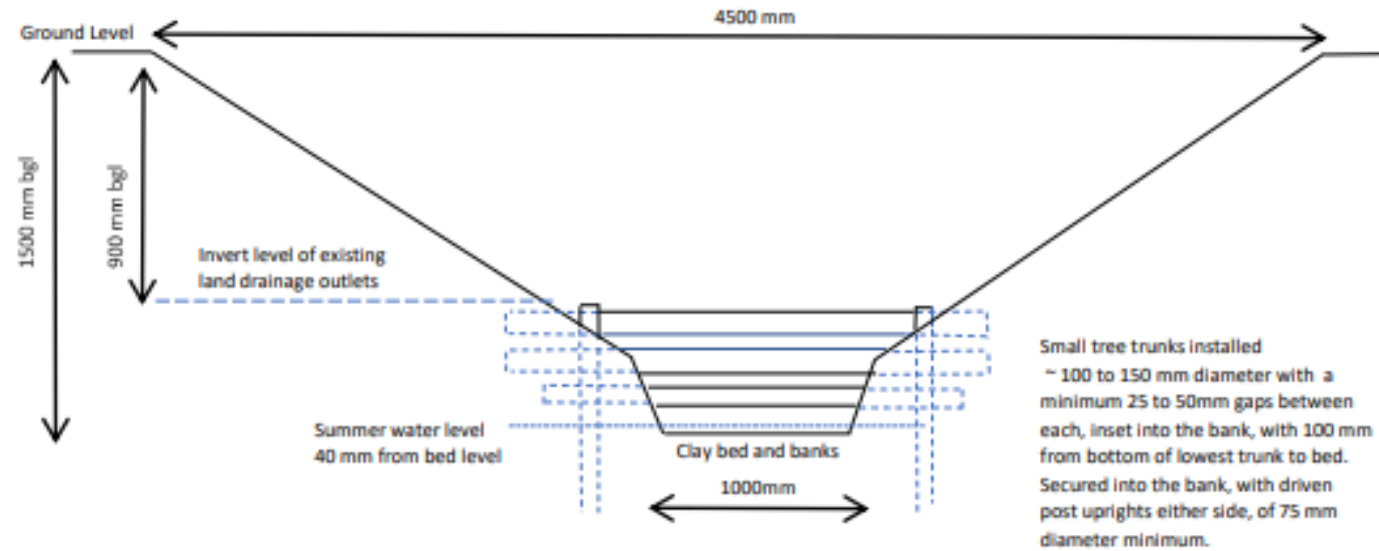
## Resilience: Approach

- **Protect** - take steps to retain features in the current landscape that are functioning well (looking after what is working).
- **Restore** – work at the source of the problem to reinstate natural processes and make positive change in the landscapes.
- **Mimic** – if you can't restore, mimic natural processes to enhance flood risk benefits.

# Slowing flow in Layer Brook catchment 2021: **Mimic**



# Design schematic



Front Elevation



# Installation

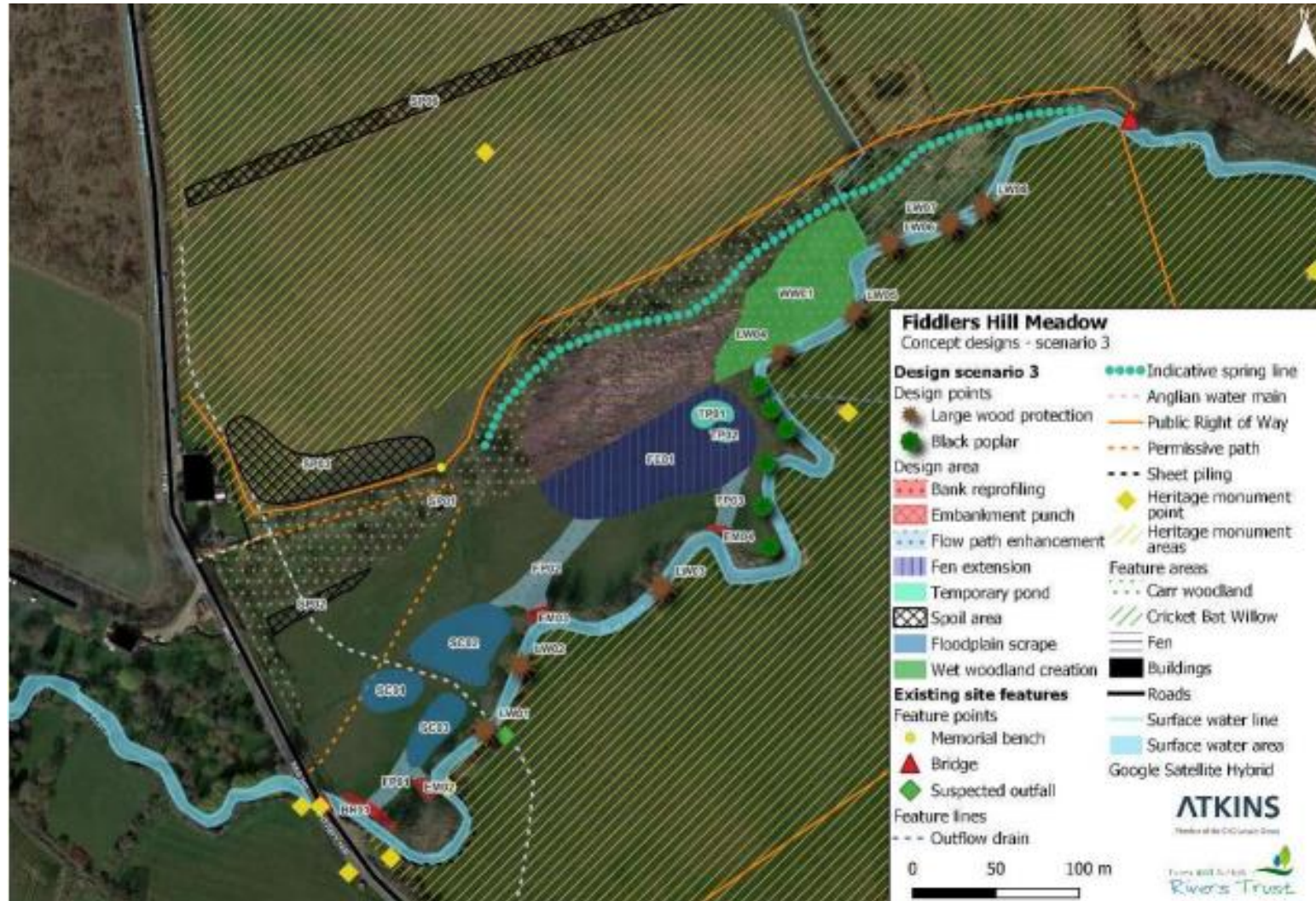




# Fiddlers Hill: Restore and Protect

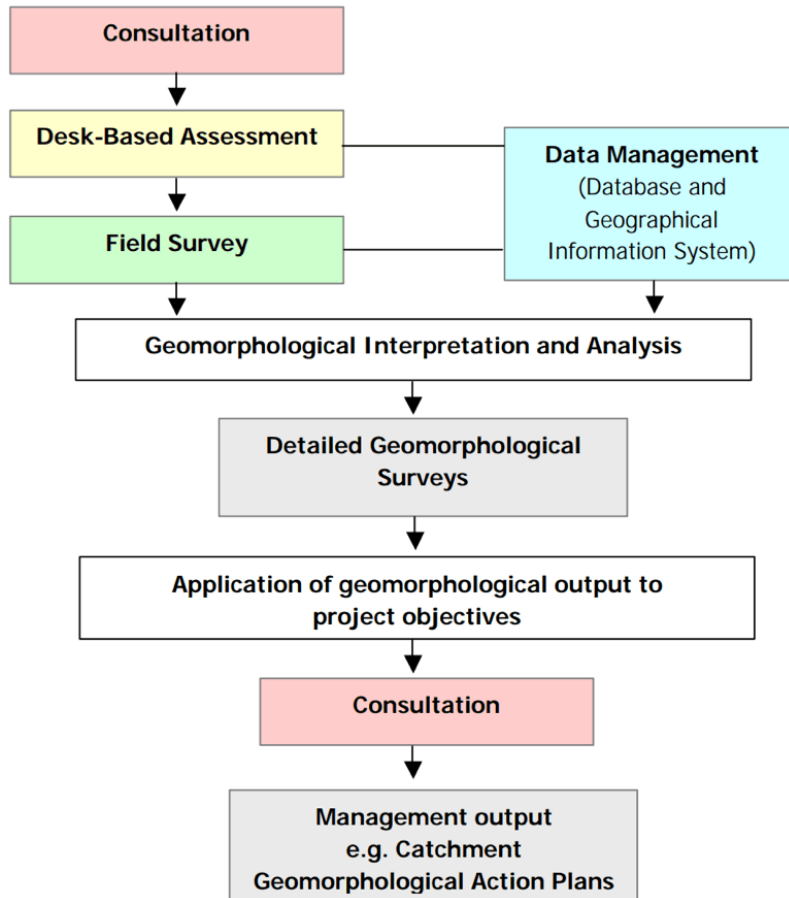


# Fiddlers Hill: Restore and Protect





# Blackwater and Pant Catchment Restoration Plan



## Timeline

Kick off meeting

22nd Jan 2024

Desk study

Feb-Apr 2024

Stakeholder workshop

Apr 2024

Field Study

Apr-Jun 2024

Analysis & Reporting

Jul-Nov

Stakeholder workshop

Sep 2024

Final Fluvial Audit docs

Dec 2024

Catchment Plans

March 2025