

Minerals Local Plan Review

Richard Greaves



Essex County Council

[Home](#)

Guidance

Minerals

Guidance on the planning for mineral extraction in plan making and the application process.

Published 17 October 2014

From: [Ministry of Housing, Communities & Local Government](#)

Contents

- [Minerals overview](#)
- [Minerals safeguarding](#)
- [Planning for minerals extraction](#)
- [Assessing environmental impacts from minerals extraction](#)
- [Charging for site visits](#)
- [Restoration and aftercare of minerals sites](#)
- [Planning for aggregate minerals](#)
- [Planning for industrial minerals](#)
- [Planning for hydrocarbon extraction](#)
- [Planning for coal extraction](#)
- [Minerals planning orders](#)
- [Review of minerals planning conditions](#)
- [Flowchart and forms relating to review of mineral planning conditions](#)
- [Definitions/terms used in the minerals guidance](#)

Minerals and waste planning policy

Contents

- [Minerals and waste planning policy development](#)
- [Minerals and Waste Development Framework](#)
- [Minerals and Waste Development Scheme](#)
- [Waste Local Plan](#)
- [Minerals Local Plan](#)
- [Authority Monitoring Report](#)
- [Statement of Community Involvement](#)

Minerals and waste planning policy development

As minerals and waste planning authority for Essex, we must ensure that:

- there are enough minerals for construction to meet the needs of Essex
- we provide sites for facilities to meet the waste needs of Essex

The local planning policies that govern minerals and waste development in Essex are:

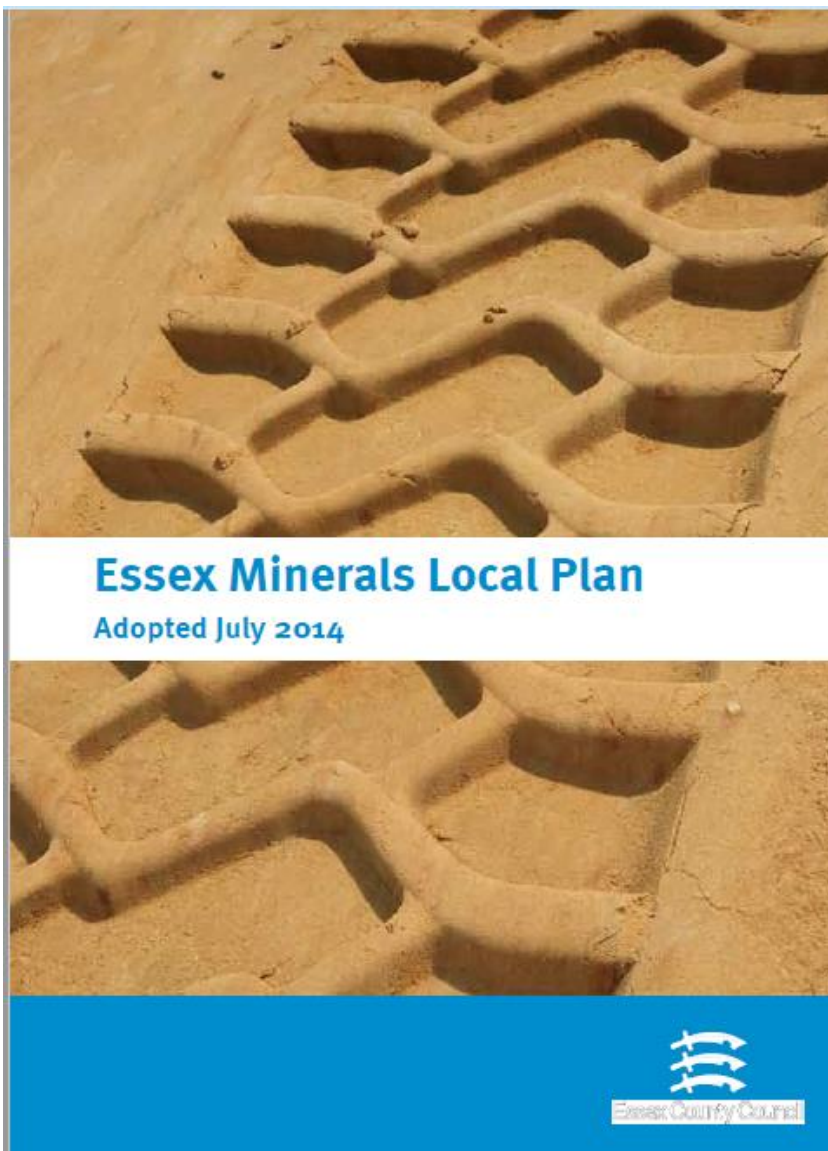
- the [Essex Minerals Local Plan 2014 \(PDF, 8.267KB\)](#)
- the [Essex and Southend-on-Sea Waste Local Plan 2017 \(PDF, 10MB\)](#)

The documents form part of the statutory Development Plan for Essex. The relevant district or borough's Local Plan is also part of this Development Plan. Those determining planning applications must refer to these documents.

We're responsible for creating, reviewing and updating the minerals and waste planning policy documents. This includes ensuring they're consistent with the [National Planning Policy Framework \(2018\)](#) on the government's site. We last confirmed consistency with a [compatibility exercise \(PDF, 222KB\)](#) in September 2018.

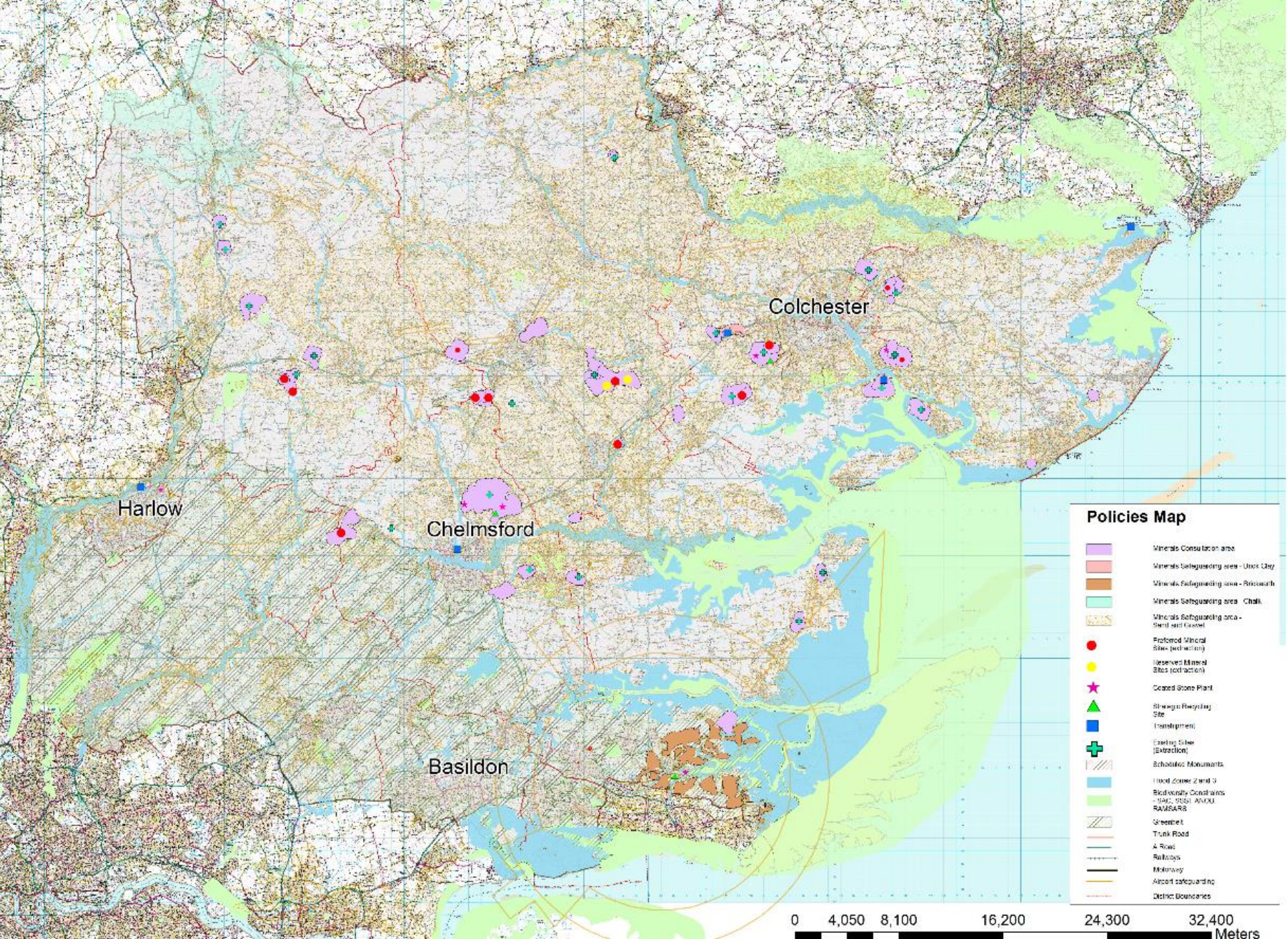
We develop policy using a solid evidence base. We use:





Contents

1.0	Introduction	5
2.0	Spatial portrait and key minerals planning issues	13
3.0	The strategy	27
	Spatial Vision	28
	Aims and Strategic Objectives	30
	Spatial Priorities for Minerals Development	34
	Policy S1 Presumption in favour of sustainable development	36
	Policy S2 Strategic priorities for minerals development	38
	Policy S3 Climate change	42
	Policy S4 Reducing the use of mineral resources	46
	Policy S5 Creating a network of aggregate recycling facilities	53
	Policy S6 Provision for sand and gravel extraction	62
	Policy S7 Provision for industrial minerals	64
	Policy S8 Safeguarding mineral resources and mineral reserves	69
	Policy S9 Safeguarding mineral transshipment sites and secondary processing facilities	75
	Policy S10 Protecting and enhancing the environment and local amenity	78
	Policy S11 Access and Transportation	80
	Policy S12 Mineral Site Restoration and After-Use	87
4.0	Preferred and reserve mineral sites for primary mineral extraction	89
	Policy P1 Preferred Sites for Sand and Gravel Extraction	91
	Policy P2 Preferred Sites for Silica Sand Extraction	94
5.0	Development management policies	97
	Policy DM1 Development Management Criteria	109
	Policy DM2 Planning Conditions and Legal Agreements	110
	Policy DM3 Primary Processing Plant	111
	Policy DM4 Secondary Processing Plant	112
6.0	Implementation, monitoring and review	113
	Policy IMR1 Monitoring and Review	124
7.0	Reference material	125
	Appendices	143



0 4,050 8,100 16,200 24,300 32,400 Meters

The Need to Review the Essex Minerals Local Plan 2014

- The Essex Minerals Local Plan (MLP) was adopted in 2014.
- Legislation requires that every five years, an assessment must be carried out of the need to review an adopted plan.
- Duty to Cooperate on the scope of the MLP Review is taking currently place at officer level as required by planning guidance.



The Review is being based on:

- Conformity with extant national policy.
- Success of policies against indicators in the Minerals Local Plan (as informed by the AMR and Local Aggregate Assessment).
- Whether issues have arisen that may impact on the deliverability of an allocated site.
- Whether any new social, environmental or economic priorities have arisen.
- Any other change that may better clarify policy intentions or improve its operation.



Emerging Indicative Work (Prior to Consultation)

- Allocated mineral reserves are considered adequate – there is no current need to allocate sites as part of this review. However Reserve Sites will need to be re-allocated as Preferred Sites to maintain supply.
- The approach to the safeguarding of mineral resources and infrastructure needs to be updated to be in conformity with national policy.
- There are some overly prescriptive restoration requirements that could be removed to facilitate more beneficial after-use. Restoration policy will be more closely aligned with natural capital growth and green infrastructure provision



Next steps and engagement

- Officer-level engagement with LPAs/neighbouring authorities and other prescribed bodies is taking place.
- Recommendation to Cabinet in November to formally commence a Review of the MLP.

Draft Timetable for Review

	<u>Key Stages</u>	<u>Minerals Local Plan Review</u>
1.	Initial scoping (incl. engagement)	September 2019 – May 2020
2.	Cabinet approval to commence Review	November 2019
3.	Preparation of draft Reg 18 Plan (inc. SA scoping etc)	December 2019 – April 2020
4.	Public and Stakeholder Consultation (Reg 18 – Preferred Approach))	May – June 2020
5.	Processing and analysis of representations	June – July 2020
6.	Consultation Feedback to Political Leadership Team/Scrutiny Committee	July 2020
7.	Necessary Changes (Inc. further DTC)	August – October 2020
8.	Public and Stakeholder Consultation (Reg 19)	October – November 2020
9.	Cabinet approval for Publication and Submission of Plan	January 2021
10.	Submission to Planning Inspectorate (Regulation 22)	February 2021
11.	Preparation of evidence for Examination	February - May 2021
12.	Examination in Public	June 2021
13.	Inspector's Report	August 2021
14.	Formal adoption	Full Council October 2021

Continued engagement



Essex County Council