



Healthwatch Essex

Dr David Sollis

HOSC 2020

Essex Coverage

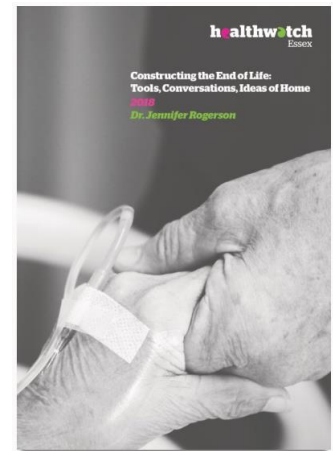
- 3 STP/ICS footprints
- 5 Clinical Commissioning Groups
- New Primary Care Networks
- Essex County Council
- 12 District Councils
- Essex Association of Local Councils
- CVS network
- HOSC, PAF, ESAB, ESCG & COMPACT



2019 Projects

Constructing the End of Life: Tools, Conversations, Ideas of Home

- The research attends to the challenges that patients, their families and hospital staff experience when planning for end of life



SWEET!3

- In the first study of its kind in Essex, young people being treated in a secure inpatient mental health setting share their lived experience of mental illness, the surrounding services, and the factors they believe could make the biggest difference to their recovery

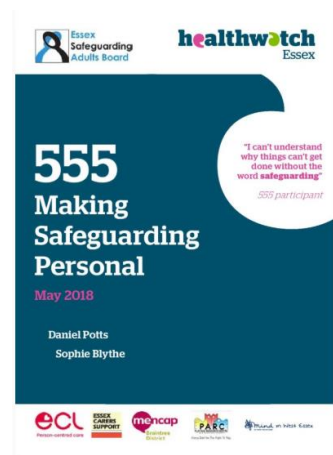


Making Safeguarding Personal

- In collaboration with Essex Safeguarding Adults Board, we explore the challenges of protecting adults at risk in Essex

Also...

Essex Neurology Network E-learning course, capturing experience of local Blind Veteran, Dying Matters Week, Maternity Patient Partners, Roving Reporters, NHS Long-term plan survey, co-production e-learning video, Young Mental Health Ambassadors & Collaborate Essex disability forum



Upcoming Reports

Mental Health in Emergency Services

- Gathering the lived experience of staff working on the front line. The project engages with those in working in Police, Fire, Ambulance and Hospitals across Essex, including volunteers

The Weight of Stigma

- Looking at men's retrospective lived experiences of obesity

Criminal Gangs and County Lines

- Understanding how Essex is responding to the risk of young people posed by county lines and criminal gangs, through engaging with services and young people

Extra Care Engagement

- Understanding adult's lived experience within Independent Living settings, to better inform how new schemes in Essex will be developed and implemented.



West Essex enquiries | October - December 2019



14%

Mental Health
Support



12%

GP
Complaints



12%

Hospital
Complaints



9%

Disability Support



5%

LD & Autism
Support



5%

Immunisations



5%

Carers
Support



5%

Benefits &
Finances



5%

Continuing
Healthcare

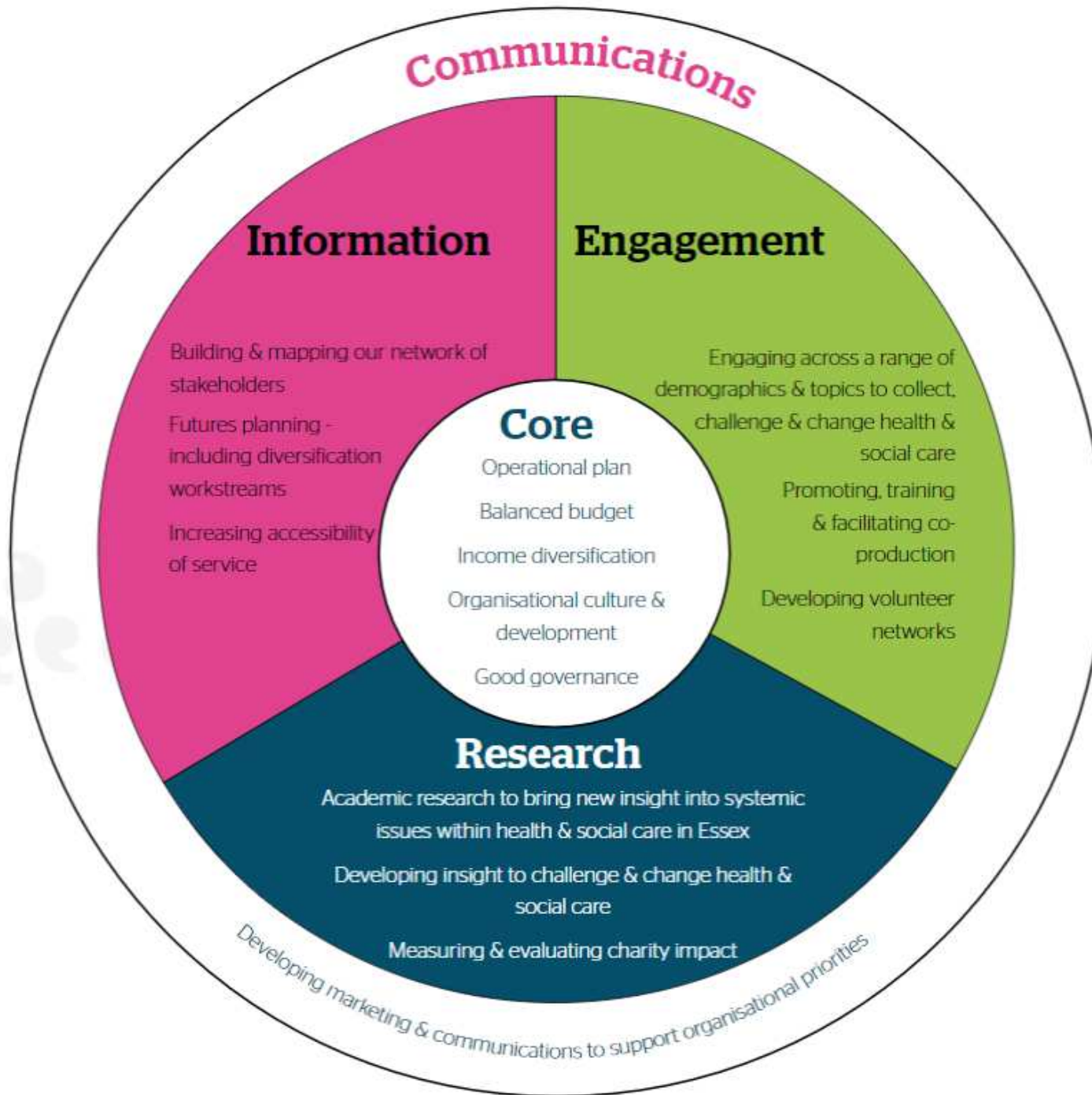


5%

Dementia
Support



Strategic Plan 2020 - 2023



Year 1

- Collaborate Essex
- Lively Lives competition
- Patient Partner programmes

Year 2

- Essex Neurology Network
- Research projects: social prescribing and suicide

Year 3

- Active Essex
- Reviewing progress of NHS long term plan



Thank you

Questions

