



Essex Climate Action Commission
Powering positive change

Climate Focus Area Update

Sam Kennedy

Director of Environment & Climate
Action

John Meehan

Head of Climate Adaptation & Mitigation



Essex County Council

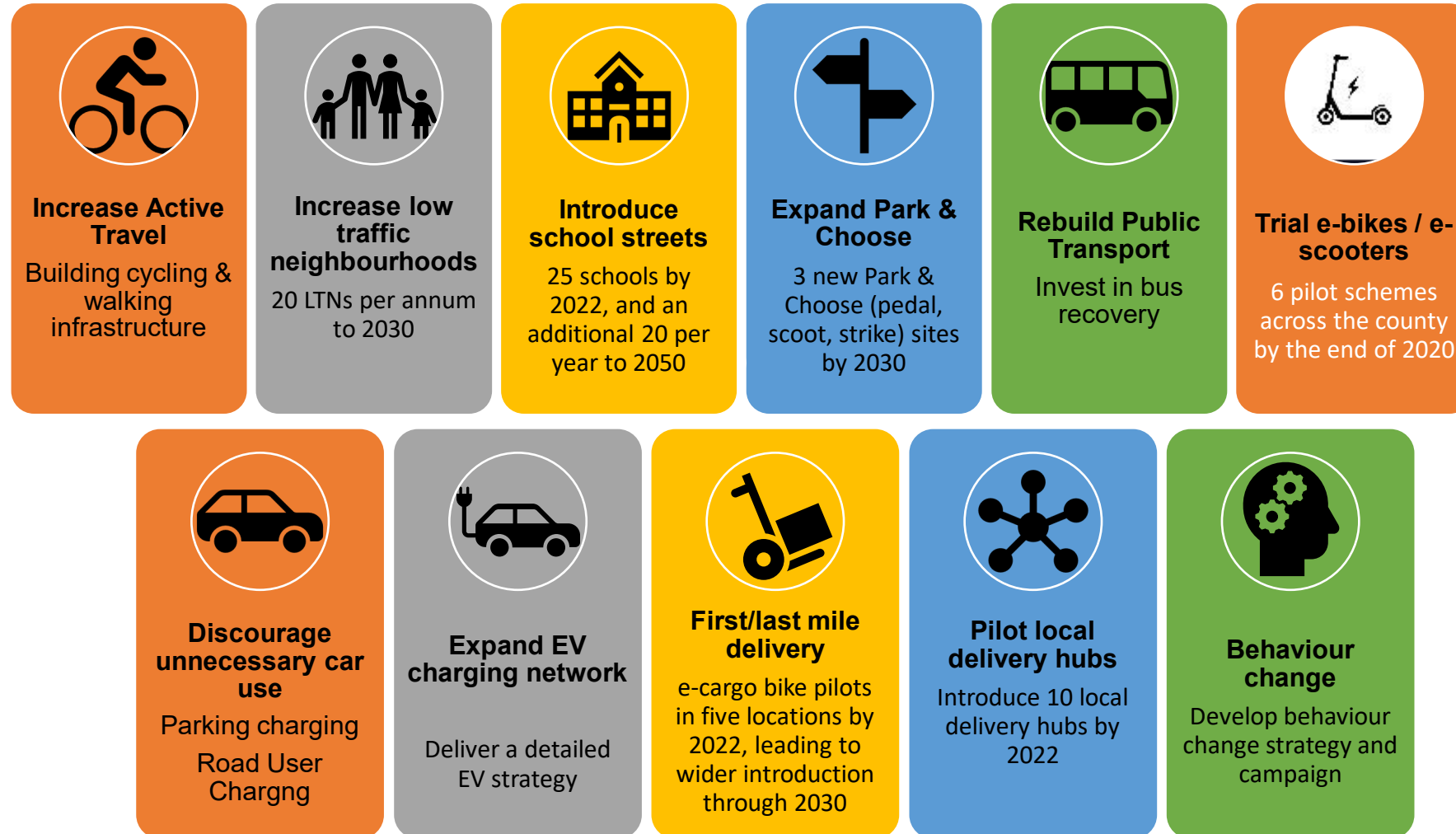
Climate Strategy for Essex

The Essex Climate Action Commission will support the County in production of a climate action strategy for Essex setting out a pathway to net zero for the County.

- The Commission was asked to review key areas where change is needed to drive down emissions, manage increasing risks from an already changing climate and open opportunity for a new green economy.
- The work plan focused in year one on six core areas for action: Adapting to an Already Changing Climate, Transport, Built Environment, Energy & Waste, Land Use & Green Infrastructure, Community Engagement
- Special Interest groups, led by Commissioners brought detailed recommendations to the full Commission for discussion and agreement over the past year.
- In July 2021 the Commission published its [Net Zero: Making Essex Carbon Neutral report \(PDF, 5.33MB\)](#).

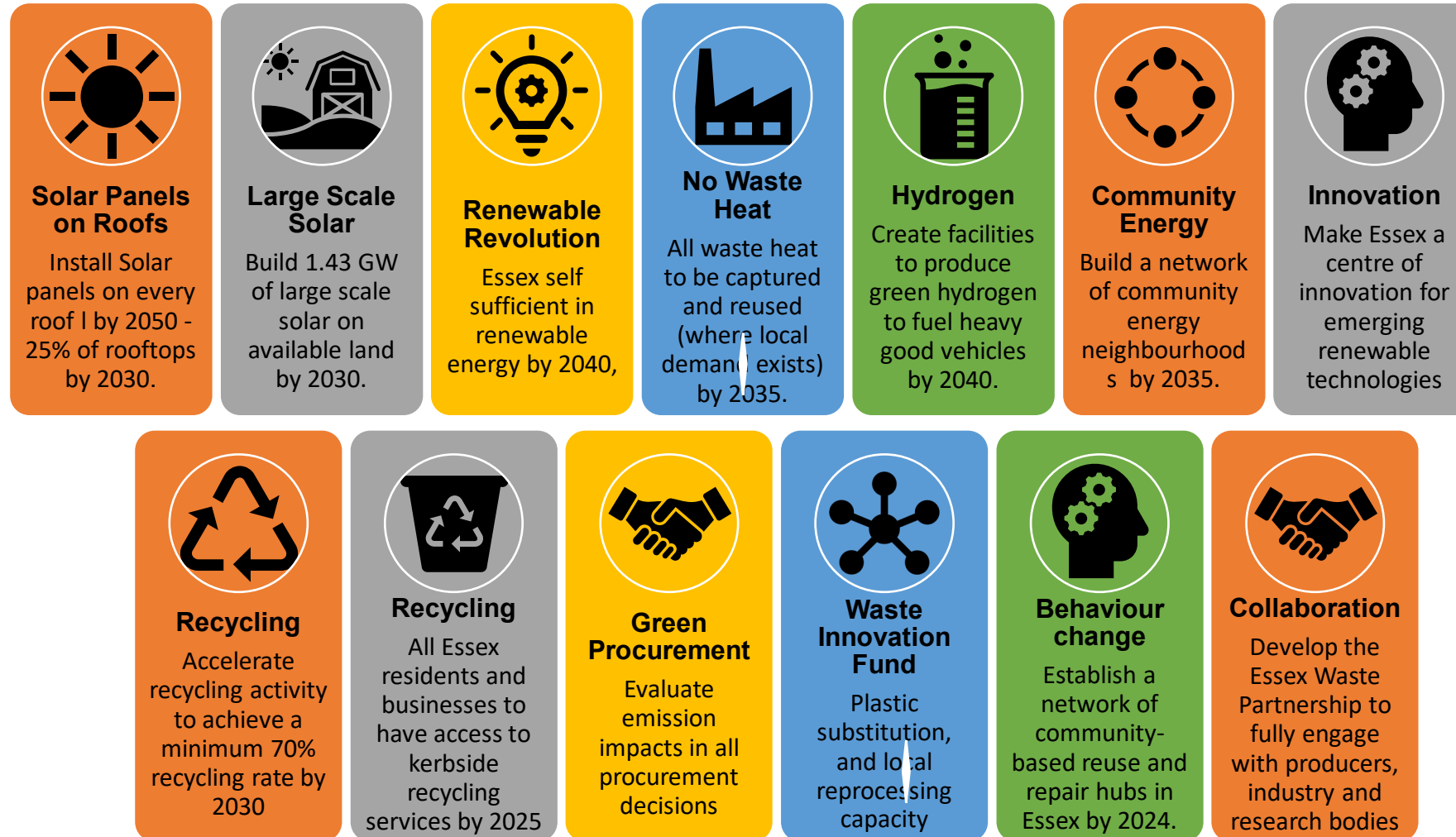


CLIMATE COMMISSION TRANSPORT



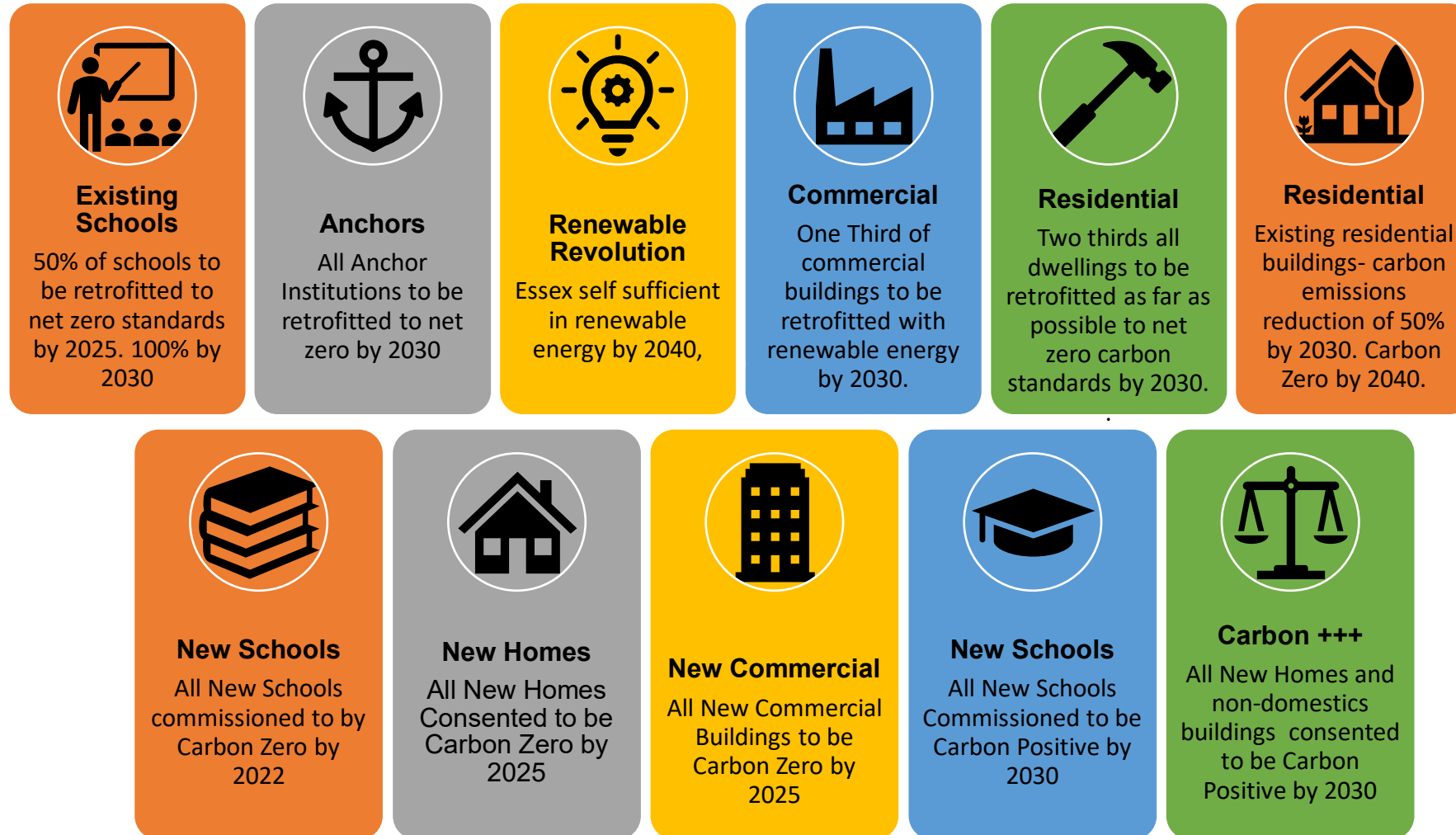
CLIMATE COMMISSION

ENERGY & WASTE



CLIMATE COMMISSION

BUILT ENVIRONMENT





Essex Climate Action Commission

Land Use & Green Infrastructure (LUGI) Recommendations

RECOMMENDATION 1	Farmland in Essex adopt 100% Sustainable Land Stewardship practices by 2050
RECOMMENDATION 2	30% of all Land in Essex will enhance biodiversity and the natural environment by creating Natural GI by 2040
RECOMMENDATION 3	Develop Natural Flood management and IWM schemes to increase flood resilience
RECOMMENDATION 4	30% greening of our city, towns, villages and new developments
RECOMMENDATION 5	Create a Climate Focus Area
RECOMMENDATION 6	Ensure collaboration & engagement by carrying out a participatory community process
RECOMMENDATION 7	Developing Effective Monitoring & Evaluation Integrated Sustainability Appraisal Framework Knowledge and Decision Support Framework Essex Climate Observatory
RECOMMENDATION 8	Develop a Funding and Partnership development Programme



CLIMATE FOCUS AREA

- **The Climate Focus Area will accelerate action and provide exemplars**
 - **Adopting Sustainable Land Stewardship practices: 100% by 2030**
 - **Natural Green Infrastructure: 30% by 2030**

Targeting a designated area within the county allows for:

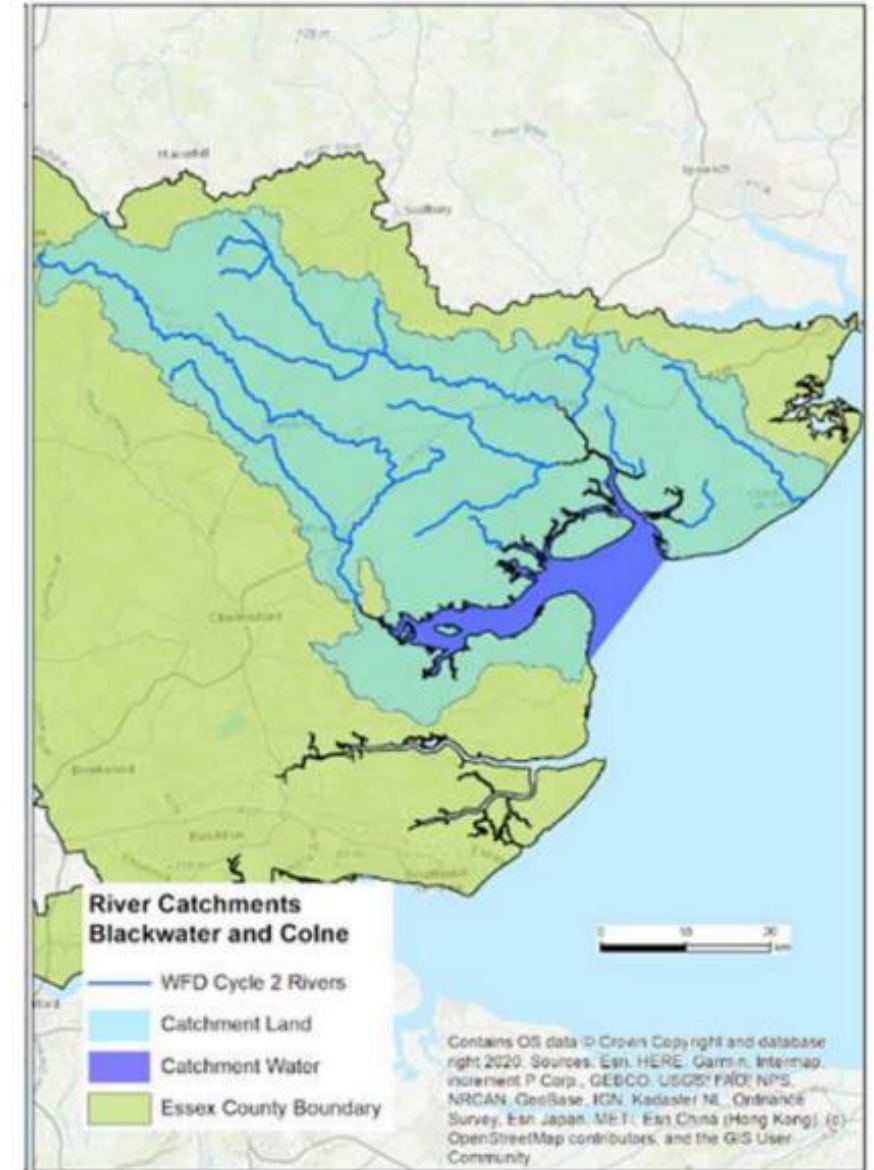
- more focused, ambitious and intensive action within shorter time frames
- learning and acquired new knowledge of positive impacts can quickly be disseminated across the county.





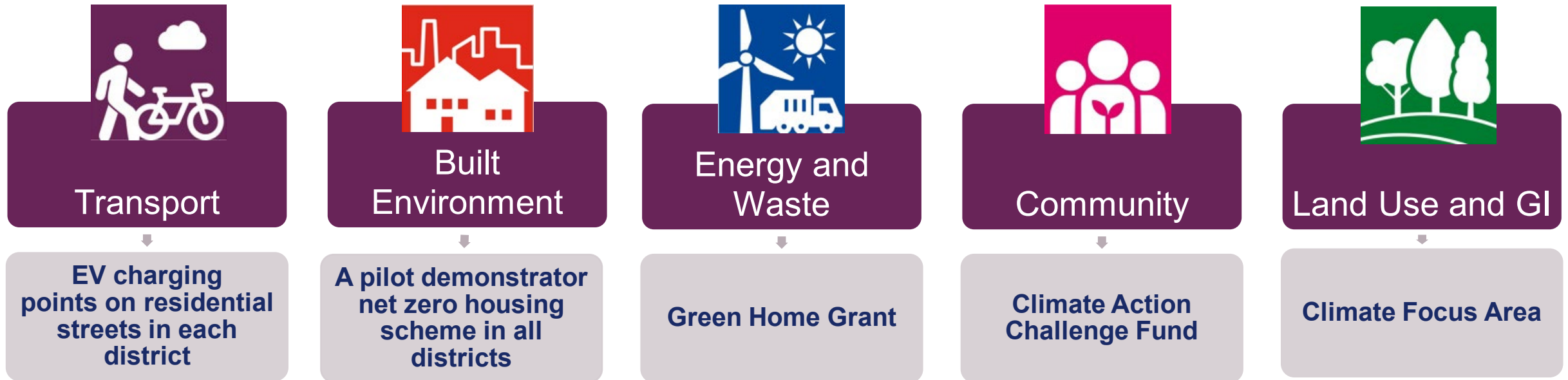
CFA Characteristics

- **Blackwater and Colne catchments**
Area: 1,217 km² (33% of the area of Greater Essex)
- Rich in geodiversity, archaeology and history
- Diverse Landscapes
- Lies in the centre of the county



North Essex Partnership Climate Activity

Climate Action Project examples



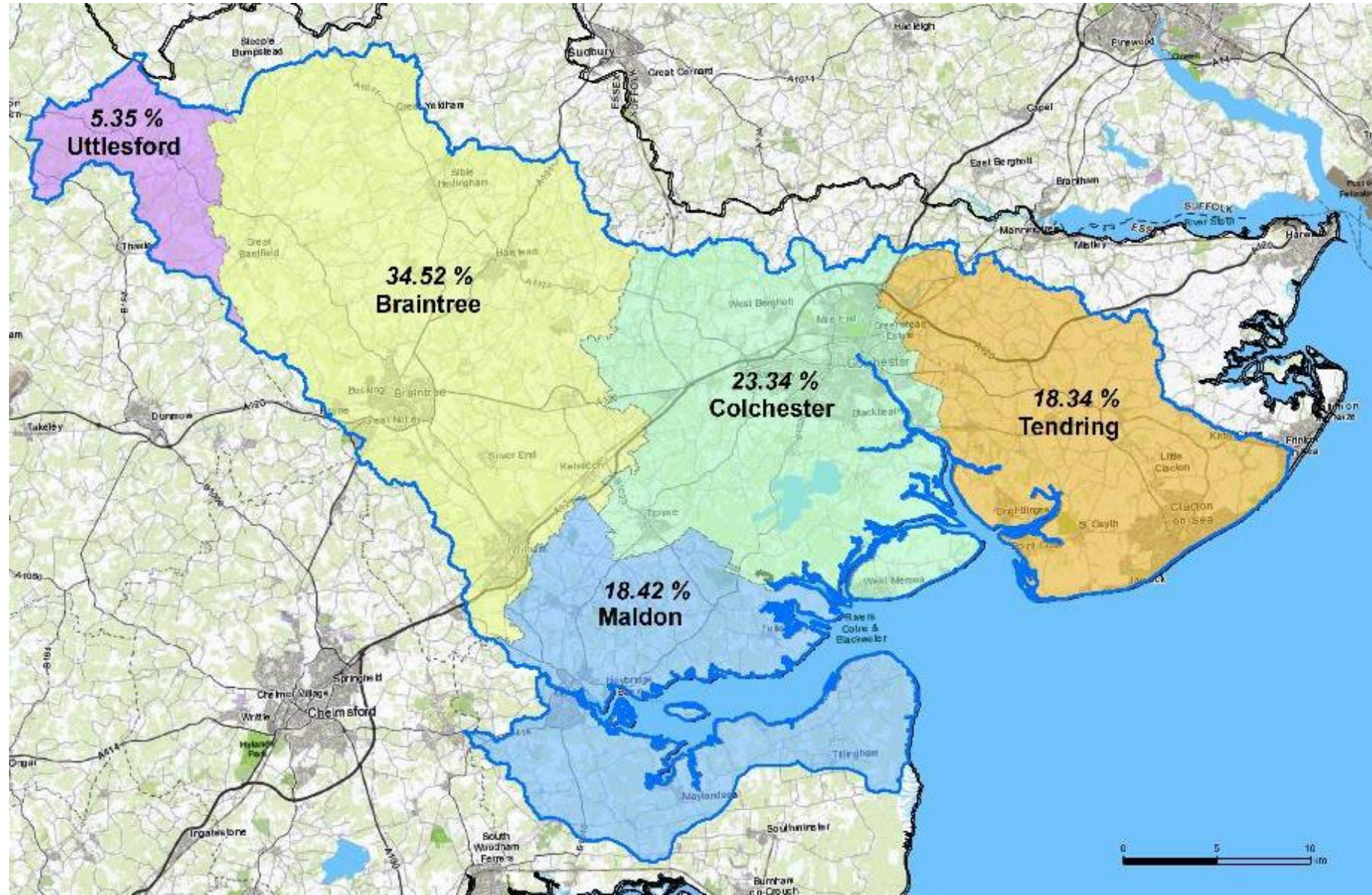


Route Map of how we will deliver the recommendations:



ECC has set out **7 projects** to establish the Climate Focus Area and deliver all aspects of the LUGI recommendations, including creating 30% Biodiversity and 100% Sustainable Land Stewardship







CFA Statistics

Local Authority Name	Hectares in CFA	Hectares Outside CFA	Total Hectares	% of LA Area in CFA
Braintree	42,017.8	19,153.0	61,170.8	68.69%
Chelmsford	8.1	34,291.6	34,299.7	0.02%
Colchester	28,405.6	6,271.7	34,677.3	81.91%
Maldon	22,425.2	20,379.7	42,804.9	52.39%
South Cambridgeshire	21.9	94,216.7	94,238.6	0.02%
Tendring	22,327.3	14,290.9	36,618.3	60.97%
Uttlesford	6,510.8	57,607.4	64,118.3	10.15%
Grand Total	121,716.9	246,211.0	367,927.9	



Partnership with the CFA Authorities

How it relates to District and Borough work:

- Green and Blue Infrastructure Strategies – the CFA will reinforce and deliver this work
- Rural and Urban focus – the CFA mentions both arenas and seeks 30% Natural Green Infrastructure in both
- Net Zero Target – the overall aim of the Essex Climate Action Commission is to achieve Net Zero
- New investment/Financial work – the CFA financial work can feed into the CBC work and vice versa





Opportunities for the CFA Authorities

- Major Climate Change Programme
- Baseline Mapping of the Borough
- Monitoring & Evaluation of the Land Use and GI changes
- Major CFA Comms programme





Why the CFA is relevant to North Essex?

The CFA will offer local districts the chance to be partners in a **ground breaking initiative** to **trial innovative natural techniques** to lock up carbon and enhance biodiversity

The 6 CFA authorities will be part a **nationally significant pilot** which has high ambitions and great energy. It has the backing of the newly formed **Essex Local Nature Partnership**, the **Essex Climate Action Commission** and **Essex County Council**.

Climate Action has started on many fronts: transport, energy, waste and built environment. The CFA will be a trail blazing project to **enhance biodiversity, reduce flooding, reduce urban heat stress, improve water quality, combat water scarcity and help transform North Essex to increase its resilience to Climate Change**

