

Economic Renewal, Infrastructure and Planning

Cllr Lesley Wagland – Cabinet Member

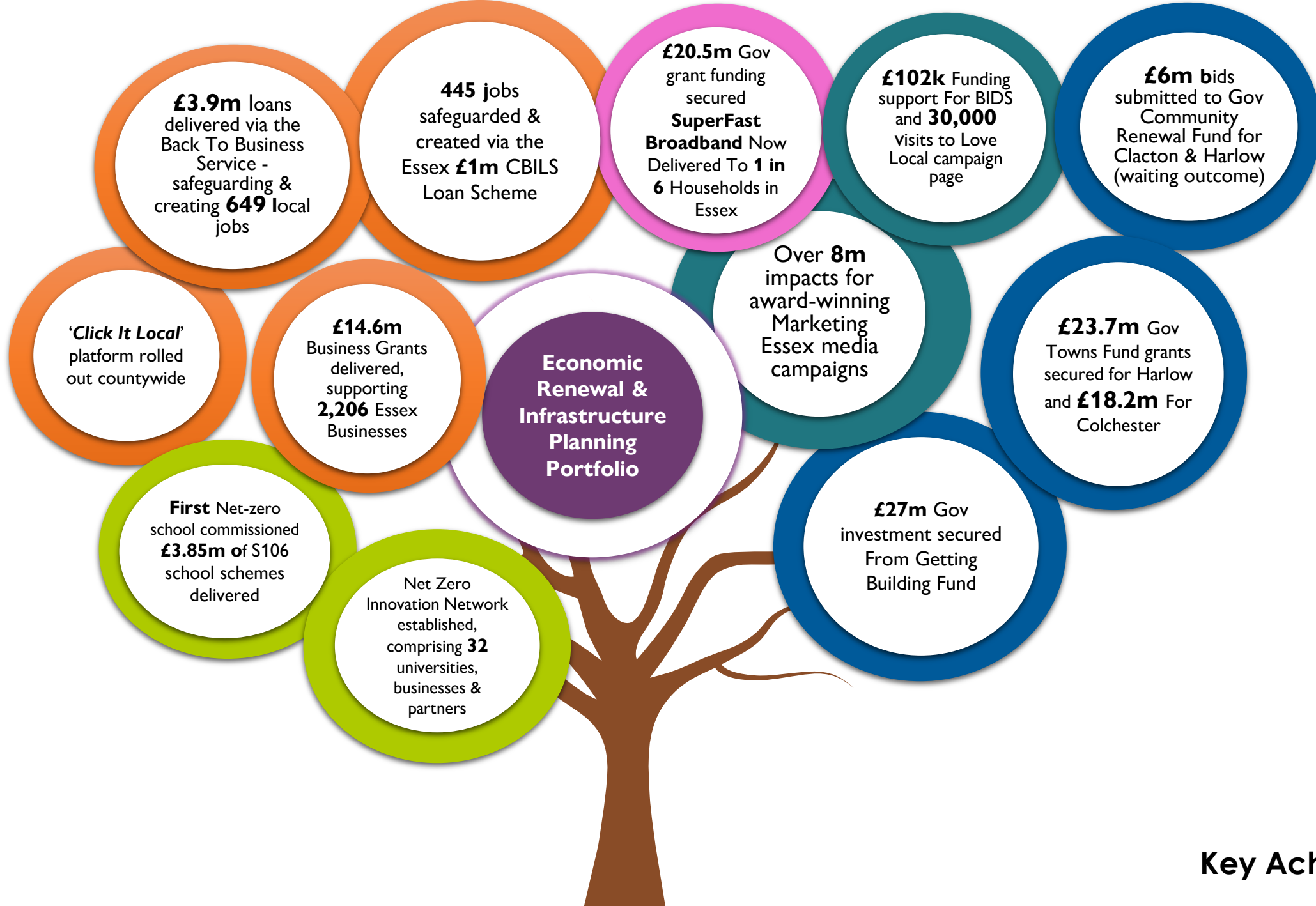
Cllr Tom Cunningham – Deputy Cabinet Member

Mark Doran – Director, Sustainable Growth

Steve Evison – Director, Sustainable Growth

Andrew Cook – Director, Highways & Transportation

Paul Crick – Director, Performance Investment &
Delivery



Key Achievements

EVERYONES ESSEX PERFORMANCE MEASURES: STRONG, INCLUSIVE & SUSTAINABLE ECONOMY

STRATEGIC Performance Measures- Are identified as critical ECC delivery to make progress towards our ambition for Essex. Core measures are limited in number to provide clarity and focus for strategic discussions. They have been chosen on the basis that ECC can influence performance improvement .	Baseline	Targets (indicative in 23-24 and 24-25)			
		2021/22	2022/23	2023/24	2024/25
Jobs created a) directly through ECC programmes; and b) indirectly through ECC investments	a) N/A	655	550	tbc	tbc
	b) n/a	We will track and publish details of jobs created through ECC investment, but no target can be meaningfully set over the plan period.			
Investment secured from third parties to fund local regeneration programmes	N/A	£96m	£20m	£20m	£20m
Infrastructure investment secured from developers (via S106)	£9,690,124	Increase on baseline	Increase on previous year	Increase on previous year	Increase on previous year
New homes delivered (via Essex Housing and ECC Independent Living programme)	N/A	113	31	304	315

CONTEXTUAL Performance Indicators these capture high-level, real-world outcomes that reflect ECC’s ambition for Essex residents and communities. Securing change in these measures may require long-term changes in local social and economic conditions – ECC has a role in influencing these changes, but no single agency can directly affect outcomes.	Baseline	Desired trajectory (indicative in 23-24 and 24-25)			
		2021/22	2022/23	2023/24	2024/25
Housebuilding: percentage of annual local plan targets for new homes achieved	92% (2020)	Increase	Increase	Increase	Increase
Job density: local jobs per head of the working-age population	0.79 (March 2019)	0.79	0.79	0.87	0.87
Unemployment rate	4.5% (July 2021)	4.50%	4.40%	2.30%	2.20%
The number of Essex businesses operating in high-growth sectors	30285 (2020)	Increase	Increase	Increase	Increase
The value of the tourist economy in Essex	N/A	Re-baseline year	Increase	Increase	Increase
The number of jobs created in Essex in growth sectors (including green growth)	N/A	Baseline year	Increase	Increase	Increase

Contextual: HIGH QUALITY ENVIRONMENT

Total number of direct jobs in Low-Carbon and renewable energy sector	-	Baseline year	Increase	Increase	Increase
---	---	---------------	----------	----------	----------

