

# Broomfieldmoves

*News about Mid Essex Hospital services move into the new build*

November 2010

## CONTENTS

Important Changes at Mid Essex Hospitals  
>> page 1

New Building  
>> page 2

New Model of Care for Children in Hospital  
>> page 2

Changes to Maternity Services  
>> page 3

Phlebotomy and GUM Changes  
>> page 3

Breast Care and Audiology Changes  
>> page 4

Layouts of the new hospital wing  
>> page 5-8

This newsletter has been produced by Mid Essex Hospital Services NHS Trust to help keep you informed about the service location changes as the result of the closure of St John's Hospital at the end of this month, and the relocation of many of our services to Broomfield and other healthcare premises.

## Important Changes at Mid Essex Hospitals >>

**As you may have read in the media the new Private Finance Initiative (PFI) £148m development at Broomfield Hospital is complete and ready for services to move in.**

The new wing of Broomfield Hospital; the largest development on the site since the hospital was first opened in 1940. It has been built so that we can centralise all of our acute services onto a single site. As a result of moving into this building, St. John's Hospital will close in November 2010.

The new building is not simply a centralisation of the Trust's clinical services; it also represents modernisation of how we work. Key to this has been the agreement of a clinical model of care which supports a split between elective and emergency services.

As we move into the new building there will be a number of changes to service provision and location. The moves into the new building started on 5th November. We decided to delay the moves by a few weeks to resolve some problems that we had with the lifts. The first moves were support services such as radiology and pharmacy followed by emergency services, inpatient wards and day case theatres. If everything goes according to plan we hope that all of the moves will have taken place by the end of November.

I am very proud of this brand new hospital building; it brings state of the art hospital facilities to the people of mid Essex and beyond. I would like to thank everyone who has worked so hard on all aspects of the project, especially By Chelmer Plc – our private sector partner who was responsible for the construction and will now maintain our new building. We look forward to showing you round in the very near future.



**Graham Ramsay**

Chief Executive

## New Building

**The new wing fits into the south-east corner of the site and consists of five levels, including a rooftop helipad and a new car park, and contains over 1,000 individual rooms.**

It provides the new main entrance to the hospital and will become the destination for buses serving the site.

There are 365 beds or recovery spaces in the new building. Up to half of the accommodation in each of the ward areas is provided in single rooms, with the remainder in 4-bed bays. All of the single rooms or bays have en-suite shower and toilet facilities. The new building also contains five new day case theatres plus additional areas that can be used for minor operations.

New models of care  
The principles of the model of care are:

A split of the elective and emergency work-streams in recognition of:

the care processes, staffing requirements and skill levels being different for each form of care;

and Patient movement and associated infection prevention issues being different for each form of care

The close proximity of the following facilities create an assessment and critical care area of the hospital:

Emergency Department and associated observation beds;

- Emergency assessment beds for stays of up to 72 hours;
- ICU / HDU;
- Medical HDU;
- Burns Unit; and
- Dedicated diagnostic imaging facilities.

Accident and Emergency and initial assessment beds to be staffed with dedicated senior clinicians, in recognition of the impact that can be achieved from early intervention by senior, appropriately skilled staff.

Direct access to the assessment area from GP referral Direct access to the assessment area from GP referral ("heralded arrival") or from the Emergency Department (A&E).

## Equipment

New equipment is essential to the new ways of working and the Trust has made a major investment to ensure that the right technology is available wherever it is needed. This is noticeable within the new theatres, with two specially equipped for laparoscopic work and one for interventional radiology cases.

Imaging services also benefit from new x-ray and CT machines and the implementation of digital mammography equipment

## New Model of Care for Children in Hospital

**On the 18th November 2010 all Children's Services from St. John's Hospital will be relocated onto the Broomfield site.**

The Neonatal Unit will be relocated into a brand new unit at Broomfield Hospital, the Unit is located on level 4 of the new hospital building and is collocated with the new Maternity Unit, any referrals or contact can be made using the current systems and telephone numbers.

The reconfiguration of wards B21/ B22 will become the new children's unit which will be called the Phoenix Children's Unit and will accept children and young people from 10 days to their 16th birthday. The unit will accommodate children and young people who are emergency admissions for all specialities.

The benefits for the children and their families will be enormous as they will be accommodated on one site in a new unit and will no longer have to transfer between Broomfield and St. John's Hospitals for specialist review or for scans and tests. The risks of

transferring sick babies and children between the sites will be eliminated and the care of critically sick children will all be managed at Broomfield Hospital.

The Children's Outpatient Department will stop providing Outpatient appointments on 18th November on the St. John's site and will relocate into the new hospital building at Broomfield Hospital. The department is very easily accessed on Level 1 (ground floor), the referral process and telephone numbers will be unchanged.



## Changes to Maternity Services

The new maternity unit is situated on level floor of the new hospital wing at Broomfield. The new unit has 20 postnatal beds and a Labour suite with 10 delivery rooms. In addition we have a new Birthing Suite with 4 delivery rooms, including a pool room, which offers women the opportunity to deliver in a more homely environment and have an early discharge home. All of our delivery rooms have ensuite facilities.

We also have an Antenatal Clinic, a large Day Assessment Unit and a modern postnatal ward for those women who need a longer stay in hospital after delivery of their baby.

The birthing units at St John's will close, but units will remain in Braintree and Maldon.

From **8am on Thursday 18th November 2010** our new state of the art maternity service will be up and running from our new purpose built unit on **Level 4** of the new wing at Broomfield

Hospital.

If a patient has a post or ante natal clinic or day assessment appointment on **Thursday 18th November 2010** or beyond they will need to go to Broomfield Hospital, take the public lifts to the Level 4 and follow the signs.

From **8am on the morning of November 18th**, if a lady goes into labour, they will need to ring either the birthing suite or labour ward on 0844 556 9609.

There are two dedicated lifts situated at the south entrance at Broomfield, near the Antenatal Department which will take patients directly to the labour ward entrance.

Up until **8am on 18th November**, if a lady thinks she is in she should ring the labour ward at St John's where a midwife will advise her.



## Phlebotomy and GUM Changes

### Phlebotomy

**The Phlebotomy Service at St John's Hospital will close on Friday 19th November 2010.**

Due to the relocation of services to the New PFI Hospital Wing at Broomfield Hospital Blood tests will then be available at Broomfield, St Michael's and St Peter's Hospitals.

We are very close to securing other sites for the service on the St John's side of town, and hope to be able to announce the location for these in the near future.

Patients can now make appointments for their blood tests at Broomfield and St John's hospitals in Chelmsford.

This is part of a trial to help those patients who do not find it convenient to use the walk-in service.

During the trial period the appointment service will work alongside the existing walk-in service.

Appointments will be available at :

Broomfield Hospital between the hours of **8am to 4.30pm Monday to Friday** and at St Johns Hospital between the hours of **8am to 3.45pm.**

To arrange an appointment patients can call 01245 516963 or visit the pathology department reception at Broomfield between the hours of 9am-1pm Monday to Friday

### GUM clinic

The GUM clinic at St John's hospital will close on **Friday 12 November** and will reopen at the C&E centre on **Monday 15 November**. This is only a temporary location until a new, permanent base is found.



## Breast Care and Audiology Changes

### The move of the breast care service from the C&E Centre

From **Wednesday 20 October 2010** our new state of the art breast care service was up and running from our new purpose built unit on Level 1 of the new wing at Broomfield Hospital.

The breast unit provides expanded services for breast care patients including facilities for screening, radiology and pathology services. It houses the "one stop" breast clinic and a base for the team of breast care nurses.

### Audiology

The audiology service will be moving to level 1 of the new PFI hospital on **Friday 19 November**.

The battery replacement service for

hearing aids is no longer available at Broomfield Hospital. Batteries are now available from the following Chelmsford clinics: Springfield Green; Moulsham Lodge, Central and Melbourne clinics.

The walk-in clinics have become an appointment only service that runs every day, Monday to Friday.

## Other Changes

### Emergency Department

The existing Emergency Department at Broomfield Hospital will close at **2am on Wednesday 10 November** and the new emergency department on level 2 of the new PFI hospital wing at Broomfield will **open at 2am**.

Patients are asked to avoid attending A&E during the evening of **Tuesday 9 November**, unless it is absolutely necessary to help ensure a smooth transition of the service.

### Change to Trust Telephone numbers

As a result of the remodelling of all of the wards around the new care pathways and in-coordination with the opening of the new hospital wing at Broomfield the decision has been taken to remove the **0844** numbers in line with national strategy and replace them with **01245** numbers.

All existing telephone numbers will automatically be routed through to the new numbers for six months, after this time the facility will be turned off. A date for the telephone number

change will be announced very soon.

### Inpatient ward moves

The inpatient ward moves from the existing Broomfield estate to the new hospital wing begin on **Thursday 11 November**. The first wards to move will be the cardiac, renal, vascular, urology and gastro wards.

### Ward numbering

Within the new building, the Trust has taken the decision to simplify patient way finding by using a system based on numbered routes and destinations.

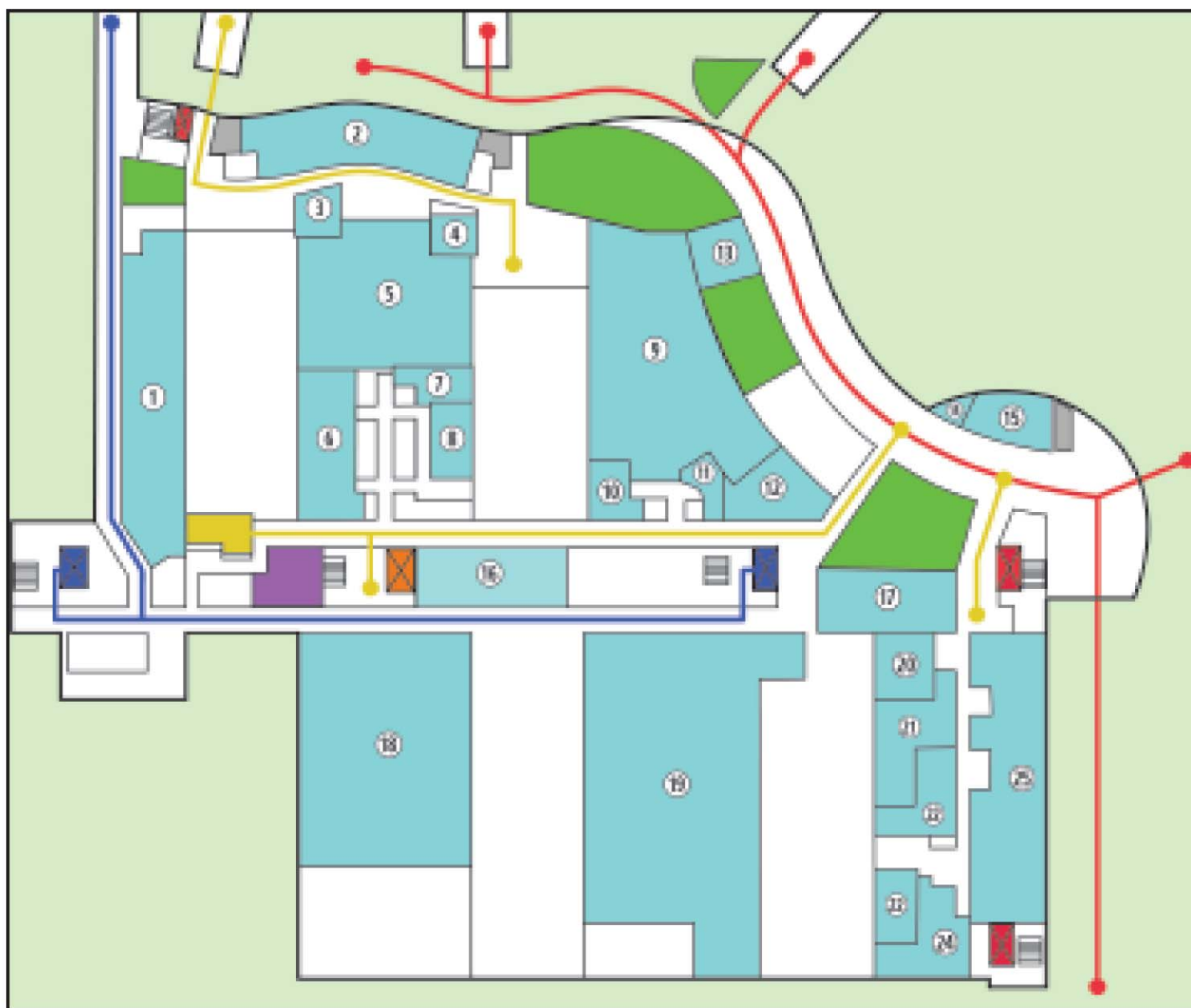
The new build and the existing estate has been divided up into **Zones: A, B, C, D and E**.

Following from the zoning approach, we have also decided that all in-patient wards, apart from the Phoenix children's ward burns ITU, adult burns and maternity wards, will have a number and not a name. The first two digits of this number relate to the zone that the ward is located in and the floor it is on e.g. ward A3.1 is located on the third floor of zone A which is the new hospital wing.



## New Hospital Wing - Level 1 Map

### Level 1 Plan



### Key

- Main Public Route
- Patient Route
- F.M. Route
- Main Reception Points

#### Lifts

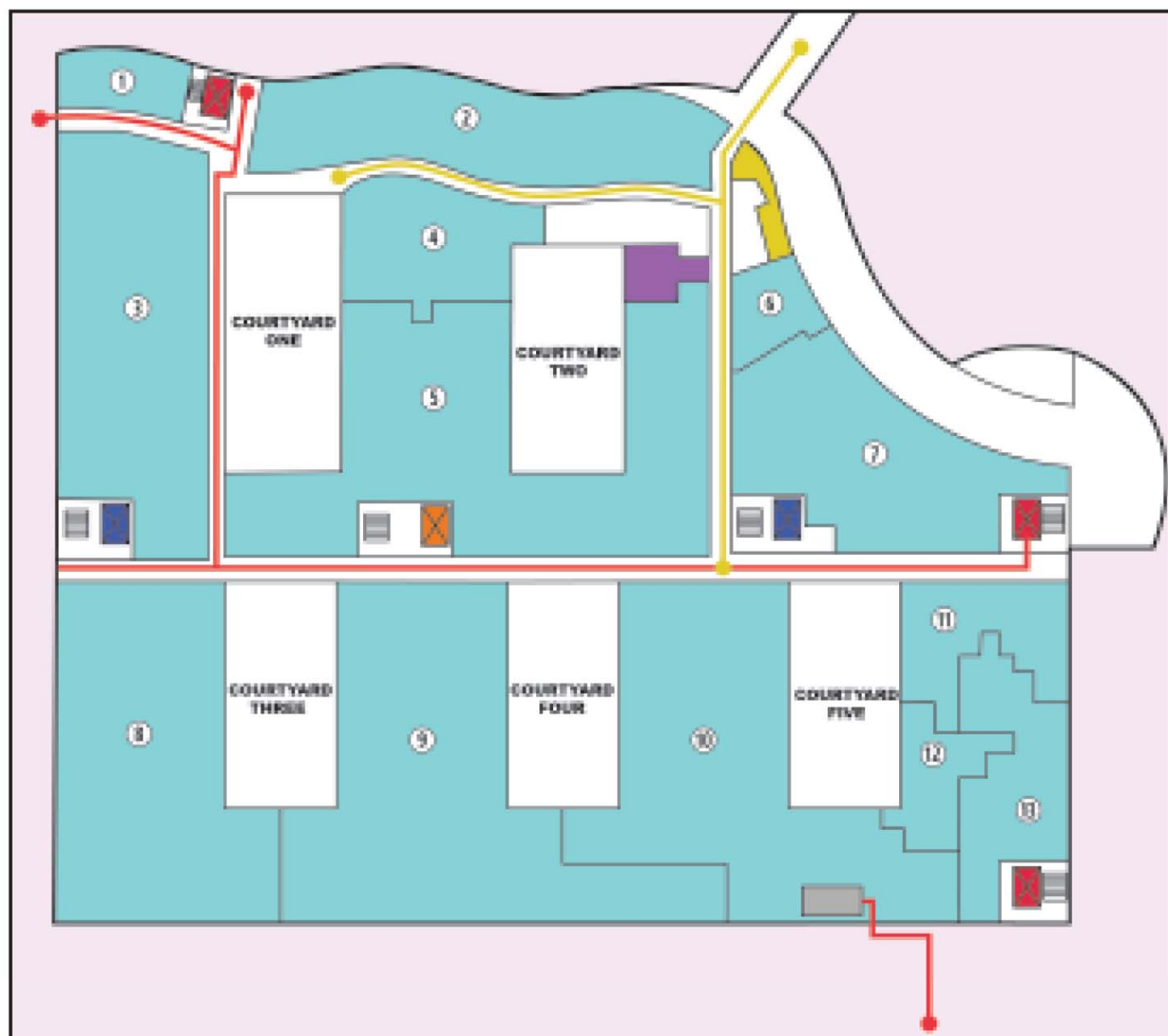
- Visitor
- Bed
- F.M.
- Shop/Café
- Staff Change
- Meeting Rooms

1. F.M. Office
2. Fracture Clinic
3. DEXA
4. Phlebotomy
5. General OPD
6. Gynaecology OPD
7. OPD Healthcare Records
8. Cleft OPD
9. General OPD
10. Vascular Service
11. Phlebotomy
12. Vascular Service
13. General/Bereavement Office

14. General Office
15. Switchboard
16. OPD Treatment Area
17. Patient Transplant Office
18. Pharmacy
19. Breast Unit
20. PUVA
21. Maxillofacial
22. Hearing Aids
23. ENT OPD
24. Audiology OPD
25. Children's OPD

## New Hospital Wing - Level 2 Map

### Level 2 Plan



### Key

- Main Public Route
- Patient Route
- Main Reception Points

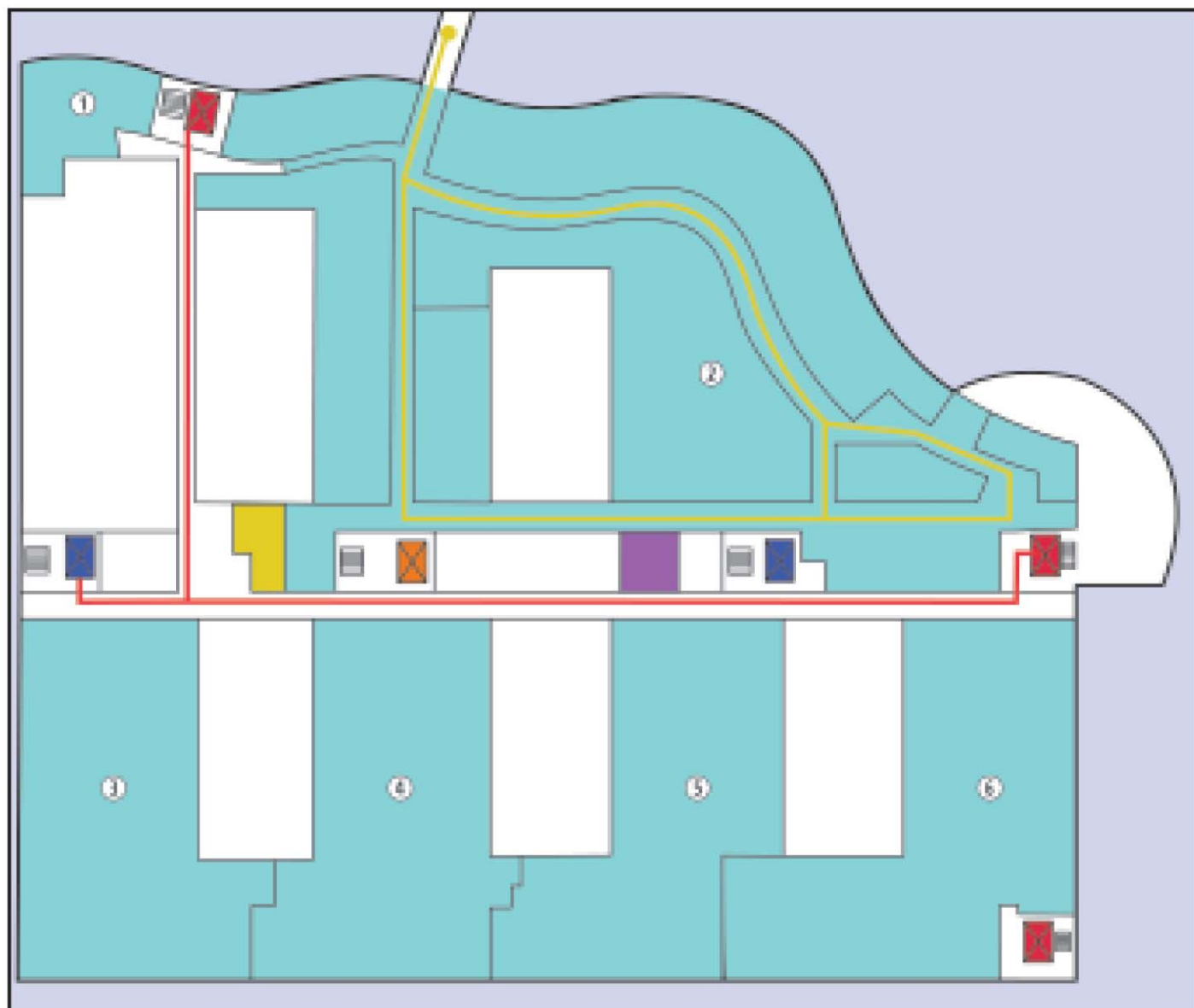
#### Lifts

- Visitor
- Bed
- F.M.
- Staff Change
- Meeting Rooms

1. Faith Centre
2. Cardiac Centre
3. Renal Unit
4. Medical HDU
5. Emergency Assessment Unit
6. Medical Photography
7. Imaging
8. Emergency Short Stay Ward 2
9. Emergency Short Stay Ward 1
10. Emergency Department - Majors
11. Emergency Department
12. Emergency Department - Children
13. Emergency Department - Minors

## New Hospital Wing - Level 3 Map

### Level 3 Plan



### Key

- Main Public Route
- Patient Route
- Main Reception Points

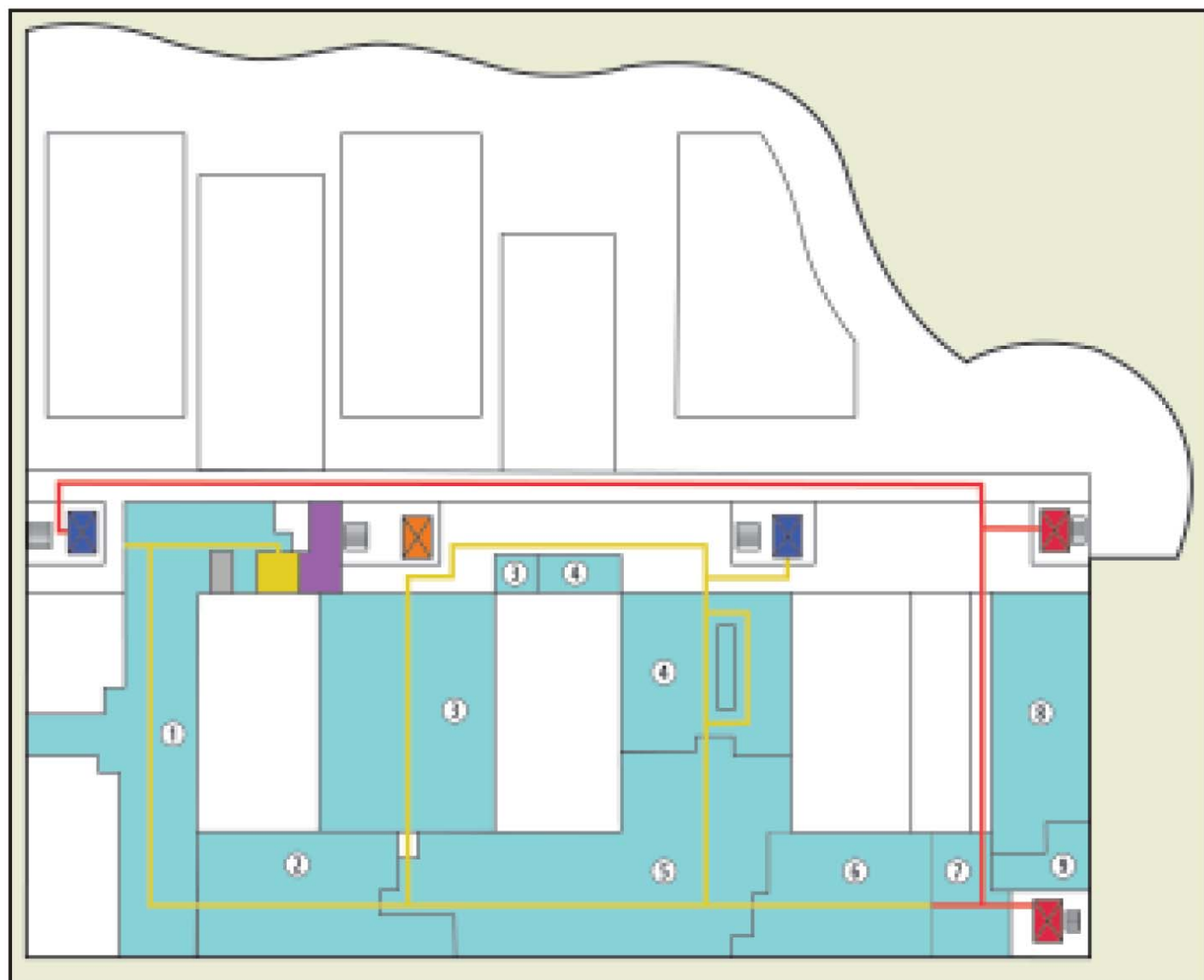
#### Lifts

- Visitor
- Bed
- F.M.
- Staff Change
- Meeting Rooms

1. Theatre Administration
2. Day Theatres
3. Renal/Endocrine/Cardiac Ward
4. Vascular/oncology?/Gynaecology Ward
5. Gastro Surgical Ward
6. Gastro Medical Ward

## New Hospital Wing - Level 4 Map

### Level 4 Plan



### Key

- Main Public Route
- Patient Route
- Main Reception Points

#### Lifts

- Visitor
- Bed
- F.M.
- Staff Change
- Meeting Rooms

1. Neonatal Unit
2. Obstetrics Theatres
3. Postnatal Inpatients
4. Antenatal Inpatients
5. Delivery Suite
6. Birthing Unit
7. Maternity Reception
8. Antenatal Clinic
9. Ultrasound Clinic