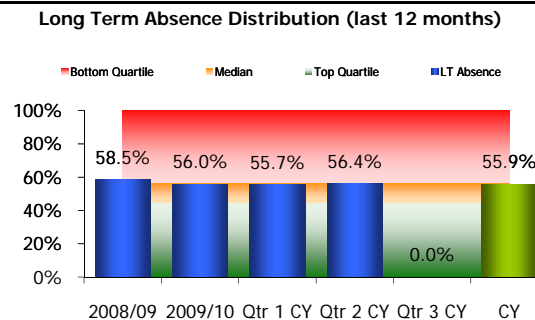
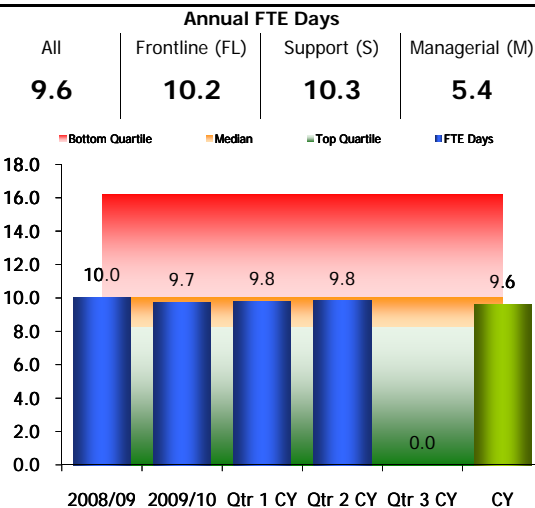
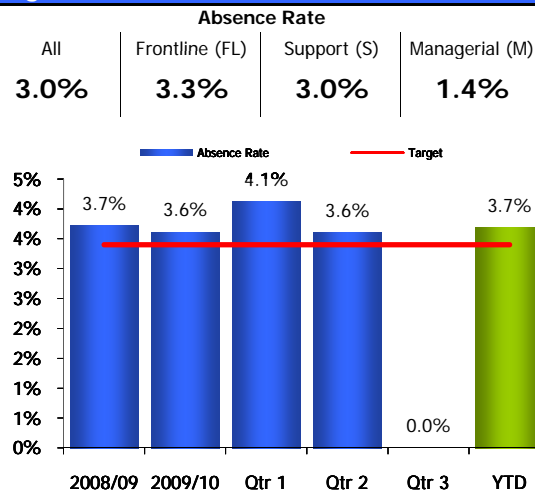


# Schools Children and Families | Absence Management Information | November 2010

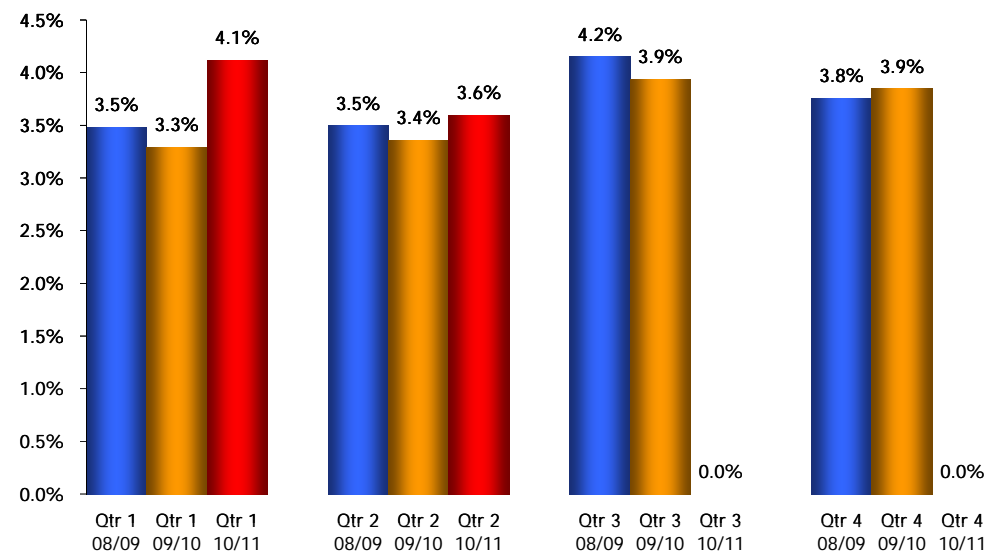
## Targets and Benchmarks



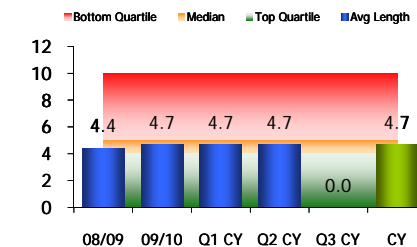
## Services in brief

Service	Employee Numbers			Absence Rates/Cost/Average Length				Policy 'trigger' rates			No Absence - CY	Data Quality		Training	
	Headcount	Position Count	FTE	Absence Rate - TM	Absence Cost - TM	FTE Days - CY	Average Absence Length	3 occasions or more	10 calendar days or more	29 calendar days or more		Other/Unknown Absence - CY	Other/Unknown Cost - CY	No. Attendees	Cancellations
Essex County Council	9,256	9,566	7,745	3.1%	£637,201	8.8	4.4	22.6%	20.9%	1.2%	39.5%	4.1%	£334,790	0	0
Schools Children and Families	3,641	3,808	3,092	3.0%	£255,791	9.6	4.7	25.4%	22.9%	1.1%	37.6%	4.6%	£170,942	0	0
Commissioning	760	889	558	3.3%	£59,349	8.4	3.7	27.6%	23.6%	1.3%	37.6%	9.3%	£70,606	-	-
Head of Schools Children and Families	6	6	6	1.1%	£529	0.2	2.0	0.0%	0.0%	0.0%	83.3%	0.0%	£0	-	-
Performance and Programmes	45	45	45	3.1%	£3,334	3.7	3.4	17.4%	20.1%	0.0%	37.8%	2.6%	£553	-	-
Resources	86	87	83	4.6%	£6,309	7.1	5.9	16.6%	14.3%	3.6%	50.0%	0.0%	£0	-	-
Schools Improvement	1,459	1,482	1,237	2.5%	£94,724	8.7	4.5	21.6%	18.7%	0.8%	40.1%	5.0%	£66,947	-	-
Vulnerable Children and Young People	1,285	1,299	1,164	3.2%	£87,758	11.9	5.4	29.5%	27.9%	1.1%	33.8%	2.8%	£41,072	-	-
<b>Job Role</b>															
Frontline (FL)	2,157	2,297	1,778	3.3%	£167,074	10.2	4.8	27.1%	24.9%	1.2%	37.6%	3.3%	£81,016	-	-
Support (S)	1,120	1,143	960	3.0%	£65,950	10.3	4.5	27.4%	22.3%	1.0%	33.8%	7.2%	£64,508	-	-
Managerial (M)	364	368	354	1.4%	£17,789	5.4	4.8	11.7%	14.6%	0.3%	49.7%	5.7%	£18,342	-	-

## Absence Rate - Yearly Trend Comparison



## Average Absence Length



## Data Quality (Other/Unknown)

