

		AGENDA ITEM
		PSEG/31/14
Committee:	Place Services and Economic Growth Scrutiny Committee	
Date:	27 November 2014	
EUROPEAN FUNDING AND BRUSSELS OFFICE		
Enquiries to:	Christine Sharland, Scrutiny Officer 01245 430450 Christine.sharland@essex.gov.uk	

Given the role of European Funding and the Brussels Office to the Essex community and its significance for the Committee's remit, the Chairman has invited some contributors to the meeting to raise awareness of these topics.

The Brussels Office serves the needs of fifty two East of England local authorities and other partners, works with Essex County Council's (ECC) External Funding Team to increase the level of EU funding for this county.

The main focus of the meeting will be upon ECC performance and strategy to access EU funds and engagement with Brussels Office.

At today's meeting the following contributors have been invited to address the Committee:

- Councillor Kevin Bentley as Cabinet Member for Economic Growth, Infrastructure and Waste and Recycling
- Karen Williams, Head of Funding and Investment , ECC
- Jonathan Millins, Senior European Policy Officer, East of England European Partnership Brussels Office (hosted by ECC on behalf of partnership)

Attached at the Appendix are two papers that provide background for this item:

1. Briefing Paper on European Funding prepared by the ECC Funding and Investment Team
2. East of England European Partnership Brussels Office Business Plan 2014-15

Action required by the Committee at this meeting:

To explore the ECC relationship with the Brussels Office, and the Council's strategic engagement on EU affairs.

European Funding

Briefing Paper prepared by the Funding and Investment Team for the Place Service and Economic Growth Scrutiny Committee meeting on 27 November 2014

What is European Funding?

The term European Funding is used to describe a group of pan-Europe 7 year funding programmes issued by the European Commission that allow Essex County Council (ECC) and its partners to access grants that can help provide financial support to projects that meet the specific objectives/ outcomes of the programmes.

ECC's Historical Success Securing European Funding

ECC has been an active participant in previous programmes securing £12.8m in the last programme which ran from 2007 – 2013.

Table 1 Funding secured from the EU funding programme; 2007 – 2013

EU Prog 2007-2013	Essex wide Total	ECC share drawn down to date
ERDF	£8,610,100	£3,117,064
ESF	£7,984,236	£7,286,361
Interreg Iva 2 Seas	£5,425,276	£1,295,909
Interreg IVB NSR	£6,308,739	£552,482
Interreg IVB Nth West EU	£499,662	£19,662
Interreg IVC	£242,146	£242,146
Other EU Programmes	£1,073,320	£282,463
Overall EU Funding Secured	£30,143,479	£12,796,087

ECC successfully secured funding for 26 projects, 3 of which secured funding of over £2m. Excluding these 3 projects the average funding secured by a project was £163k. Across Essex there were 60 projects funded through the European Union (EU) programme, 6 of which secured funding of over £2m. Excluding these 6 projects the average funding secured by a project was £239k. The lower average project funding achieved by ECC was due to the majority of funding coming through the Interreg programme which grants smaller sums than other programmes.

Further information about Interreg and ESIF is set out at the annex to this briefing paper.

Challenges faced in previous Programmes

In the last programme, ECC started well with coordinated project development and involvement, amassing a majority of its gains in the period from 2007-2010. However, from 2011 onwards the Funding Team spent a lot of capacity driving forward and promoting the opportunities, having lengthy meetings with lots of

collaborators, only for the project not to be pursued due to the perceived risks around EU funding, and complications with local partners.

The perceived risk is a direct result of ECC exposing itself to claw back under the ESF (European Structural Funds) programme in 2006, which amounted to £2m. This led to nervousness around EU funding.

The previous 2007-2013 programme adopted an approach that encouraged individual projects to come from within each county of the region. Some crossover, and collaboration was built with the likes of Thames Gateway South East Leading a Low Carbon Business and a few other programmes were also developed to fulfil the need for 'Regional Impact'. However, the smaller localised projects came forward with a passing glance to the Regional Impact, but more of a benefit to the town or location the project was built in. This was fine as long as the owners of the projects were prepared to take full financial responsibility and accountability for the delivery of the promised outputs. This engendered an ongoing underspend in the regional programme.

During this period, there was no centre of funding excellence within ECC and so bids were primarily developed by the service lines themselves. This adversely affected the quality of the bid documents and in many cases the bids were rejected at an early stage.

Moving towards the next programme

It is imperative that ECC and Essex based organisations take advantage of the opportunities offered by the new EU Funding programme which runs from 2014 – 2021. The main programmes and related themes pertinent to Place outcomes are set out below, along with the action that is being carried out:

Issue 1

It remains apparent that organisations across Essex both public and private, are not yet aware of the opportunity that the EU Funding Programme offers.

Action

Continued activity, to raise the profile and awareness of EU funding across all organisations in Essex.

Issue 2

In the next ESIF (European Structural and Investment Funds) programme the UK government is the Managing Authority but it has chosen to devolve its responsibilities for implementation down to LEP's (Local Enterprise Partnerships). The EU feels very uncomfortable with this devolved approach and as a result it is proving difficult to gain clarity on the overarching legal framework (Operational Programme). This means at a local level, organisations are distracted from project pipeline development and continue to work in silo's when we know that the LEPs preferred approach is whole-scale strategically focused programmes.

Action

A consistent message is shared across the various networks/ forums and meetings that the priority is to develop strategic programmes and that we should not get side

tracked by national debate on the overarching frameworks. The implication of being distracted by the lack of clarity will mean an under developed pipeline of strategically focused projects when the funding calls come out. The initial call is likely to be of significant value and others may be better placed than us to competitively bid for those funds.

Issue 3

A robust cross LEP project pipeline of 'shovel-ready' projects is required, for bidding under the ESIF programme in the first quarter of 2015 (the EU works by calendar not financial years). We are actively engaged with all the local authorities and partners across Essex, to explain how EU funding will operate and the method in which to present a project for approval but progress is slow.

Action

Recognise that ECC is able to build in EU Funding into the underpinning 'funding strategies' currently being built, through projects on the pipeline for the duration up to 2020, to help commissioners achieve their outcomes.

Issue 4

As the SELEP has moved to a federated model, there has been confusion regarding how the project approval process will work. The first indication has recently been announced with the development of a single South East ESIF Committee which will be chaired by the private sector and have representatives from a cross section of partners. This will be the decision group for projects to be accepted for funding across the whole of the LEP, and all projects must build towards this single framework.

The Local Growth Delivery Team based at Department for Communities and Local Government will maintain project contact through development to ensure criteria is met, and an expected two stage process of Expression of Interest to them first will be implemented prior to a full Business Case for approval by the SE ESIF Committee.

Action

Clarity is sought from the SELEP on the process for securing funding.

Issue 5

Strategic collaboration pan Essex has historically been very difficult to secure. This has in part been driven by the nature of the previous programmes. But this programme is a very different beast and it explicitly requires collaboration across all sectors within Essex and beyond our borders.

Action

Through the existing networks and forums, a collaborative style of engagement must be re-enforced and encouraged. Opportunities for joined up working must present themselves at regular intervals. The Funding and Investment Team (FiT) recommend that a seminar/ conference is run which will focus on collaboration and identify inter dependencies and complementary areas of focus across the County with the aim of finalising the project pipeline.

Annex

INTERREG

Interreg is designed to stimulate cooperation between member states of the European Union on different levels. The Interreg initiative is designed to strengthen economic, social and territorial cohesion through cross-border, transnational and interregional cooperation.

The implementation of the programmes is co-ordinated by steering committees, which consist of representatives of the authorities responsible for Cohesion Policy measures in each member state. These can be both central state agencies and regional agencies. The final beneficiaries of Interreg funds are usually public authorities, interest associations and non-profit organisations, such as chambers of commerce, employer organisations, unions or research institutes. Under Interreg IV, private firms are only eligible if they apply through a consortium of several firms; in previous programme periods, they were not eligible at all.

ESIF

European Structural and Investment Funds are the European Union's main funding programme for supporting growth and jobs.

Historically these funds have been accessed and managed independently. However, for the 2014 to 2020 period, Government are bringing them closer together to make the most of the connections between them, and ensure a more accessible process for those seeking and applying for funding. In England, a new European Growth programme will run from 2014 through to 2023, and is made up of:

- European Regional Development Fund
- European Social Fund
- part of the European Agricultural Fund for Rural Development

Each of the three European Growth programme funding streams has a separate national Operational Programme document setting out the priorities and activities it supports. Initial drafts of these have been produced for the European Regional Development Fund, European Social Fund and European Agricultural Fund for Rural Development. They have been submitted to the European Commission and are now being negotiated and so are subject to change.

A UK Partnership Agreement sets out financial allocations and describes how the UK will use EU funds to help meet Europe's long-term goals. The combined UK-wide value for the European Structural and Investment Funds and the European Maritime and Fisheries Fund is €16 billion.

The large majority of the funds in the ESIF Growth Programme will be notionally allocated to LEPs areas. LEPs will work with local partners, to set out their priorities for the EU Growth Programme Funds in their area in an investment strategy.

Further information can be found through the links below:

<https://www.gov.uk/government/publications/england-2014-to-2020-european-structural-and-investment-funds-growth-programme-handbook>

<https://www.gov.uk/england-2014-to-2020-european-structural-and-investment-funds-growth-programme>

<https://www.gov.uk/government/publications/european-structural-and-investment-funds-uk-proposals>

FURTHER INFORMATION

Committee Members may find the following page of use:

http://europa.eu/legislation_summaries/glossary/

East of England European Partnership Brussels Office Business Plan 2014-15

1 Background

- 1.1 The 2013-14 business plan radically updated and refreshed the former three year plan and reflected both the new sub-national arrangements as well as the evolution of the EU's policy agenda, beyond that of the Commission Work Programme.
- 1.2 This year's business plan is in part an evolution of that agreed for 2013-14. Some of the priority areas of activity follow on logically from the previous year, e.g.
- Working alongside local partners to position them to make the most of significant programmes when they eventually come on stream later in this financial year, such as the EU Growth Programme (ERDF/ESF/EAFRD), TEN-T and INTERREG.
 - Preparing and informing partners to avail of the new EU funding opportunities of relevance to them under the new 2014-2020 programming period as calls emerge.
- 1.3 However on the Brussels side, the context for the broader policy agenda is likely not to be set until mid-way through this financial year. In May 2014 the new 5 year term of the European Parliament starts and in September/October the composition of the new Commission will start to emerge. Therefore the European Partnership cannot yet anticipate the changes that these two new institutions will bring to the policy agenda.

3 Vision for Service

In 2014-15, the European Partnership is focussed on giving local partners a voice in key policy debates, and providing expert advice and support to help partners access EU funds from the new 2014-2020 programmes. The team is entirely focussed on providing a high quality, intelligence-oriented service, concentrating on the needs of our partners, while also exploring potential income generating opportunities which can be invested back into the service for the benefit of partners.

4 Who we are and what we do

- 4.1 The East of England European Partnership funded by East of England LGA, and a number of other partners, to represent the views of the East of England European Partnership vis-à-vis the EU Institutions.

The office's principle aim is to assist partner organisations improve their access to EU funding, through:

- Finding a path of opportunity for partners through the EU institutions and legislation;
- Providing intelligence and advance warning of EU policy and funding developments;
- Raising the profile of individual partners in particular and the East of England in general with key policy makers in the EU and organisations across the EU;
- Creating links through networking and partner searches with other European regions in support of transnational project development.

4.2 Governance and stakeholder engagement

4.2.1 The European Partnership is steered by the **Europe and International Panel (EIP)**, recently reformulated to be a panel of the East of England LGA. As a consequence of the governance review of the East of England LGA, the Europe and International Forum, previously a stand-alone group, decided to review its own terms of reference. Now as a panel of the Association, its chair will also be the East of England LGA spokesperson on European Affairs, reporting activities into the management committee of the Association. The broader stakeholder involvement as represented in the EIF membership will not change.

4.2.2 The EIP provides strategic guidance to the work of the European Partnership, and is the voice of the European Partnership on issues relating to European and International Affairs. It meets quarterly and has a broad stakeholder engagement including local government (East of England LGA), international trade, business, social and environmental stakeholders, representatives from Local Enterprise Partnerships, Members of the European Parliament and the Committee of the Regions. The new terms of reference and membership are set out at Annex 1. The European Partnership provides the secretariat to the EIP and reports quarterly to it

4.2.2 Having only a small team of 5 policy officers (4FTE), the European Partnership relies on excellent relations with local partners who are able to promote or take advantage of the EU funding intelligence and information provided by the Brussels-based team. The office uses a range of communication tools to give timely information to the network of officers across the partnership. It produces regular information newsletters (policy snapshots, funding and partner search monitor) as well as detailed briefings when key EU funding calls are expected or announced. The expertise of the team is best exploited by partners coming forward with specific queries and detailed requests. It maintains a detailed member-only website which acts as a repository for a broad range of policy and funding briefings. The new updated website is password protected giving exclusive access to subscribing partners. Twitter is being used and shortly Facebook too as additional means of communicating opportunities to partners.

4.2.3 The European Partnership provides the secretariat for the **European and International Affairs Officer Group (EIAOG)** which meets quarterly. This network, open to European officers as well as officers dealing with economic development or external funding and provides a forum for exchange of good practice and experience on funding applications. The European Partnership uses this forum to obtain input in the development of policy positions, which are ultimately signed off by the EIP, taking advantage of the insight of experienced practitioners.

4.2.4 The European Partnership uses a number of additional forums to communicate key policy and funding intelligence and information. The list of organizations include,

but are not limited to; East of England LGA's portfolio holder networks, Regional Transport Forum, Strategic Transport Sub-Group, LSPs and county officer networks, the Strategic Migration Partnership and Local Enterprise Partnership boards and sub-boards as well as frequently updating the ERDF Local Management Committee (LMC). Other ad hoc task and finish groups are established as required by the sector, eg the EU Growth Programme stakeholder round table.

- 4.2.5** On request, the European Partnership team delivers 1-2-1 meetings with partners as well as tailored presentations for individual officers or politicians from member authorities, eg local authority cabinet briefings or presentations to management teams.

5 Funding and management of the European Partnership

- 5.1** Line management and hosting of the European Partnership continues to be provided by Essex County Council in close collaboration with the East of England Local Government Association (East of England LGA). The principle contributor to the European Partnership budget is still the East of England LGA. However additional income comes from a number of other partners and external sources.

- 5.2** The challenge for the European Partnership in 2014/15 is to deliver a high quality service to subscribers to ensure that the current partner base will stabilize to ensure budgetary certainty. Furthermore to this end the team will do more to 'sweat its assets' and secure income for its highly regarded EU information service with organisations outside of the East of England, especially those without a base in Brussels.

5.3 Current subscribers to the European Partnership service include:

East of England LGA

Greater Cambridgeshire Greater Peterborough Local Enterprise Partnership

Hertfordshire Local enterprise Partnership

New Anglia Local Enterprise Partnership

University of East Anglia

Anglia Ruskin University

University of Essex

5.4 The European Partnership provides its information service to

Norfolk Constabulary

Association of Colleges of the Eastern Region (TBC)

Manchester Brussels Office

Merseyside Brussels Office (TBC)

5.5 The European Partnership hosts:

European Port Community Systems Association (EPSCA),

5.6 The European Partnership has sublet part of its office space to:

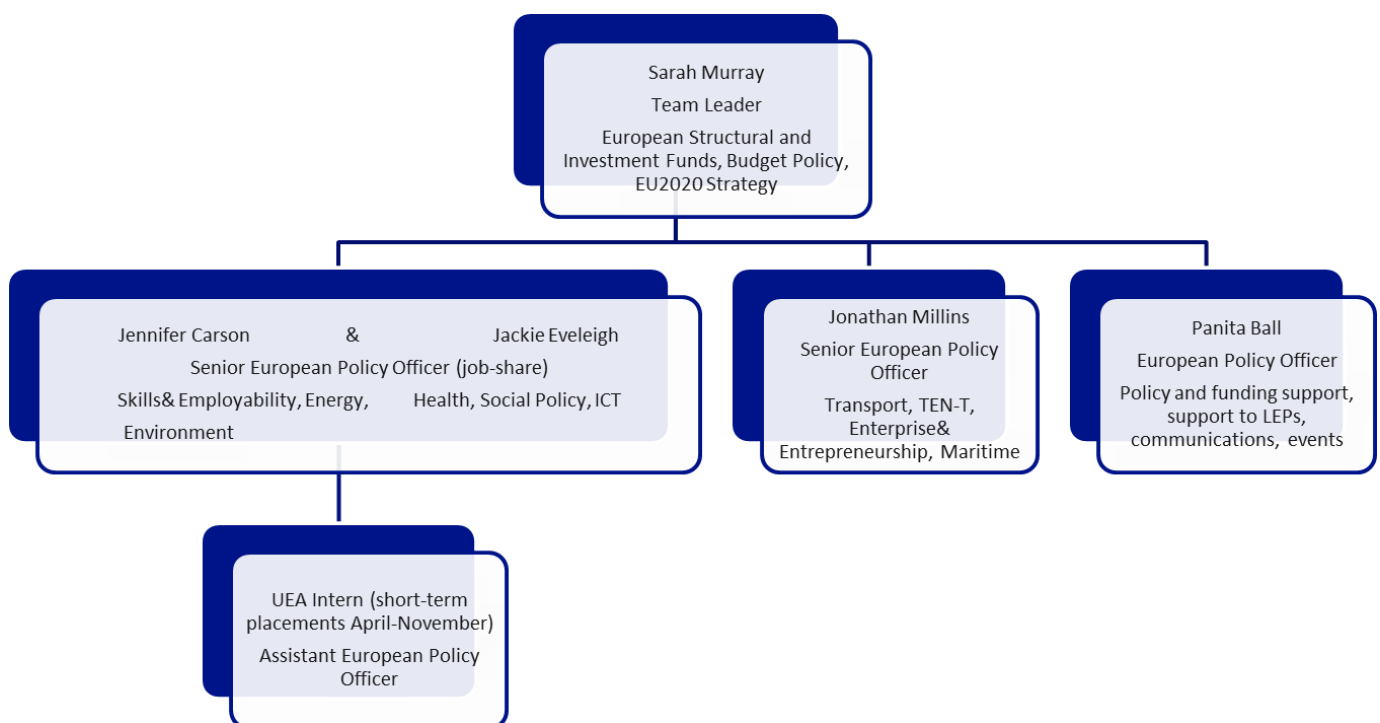
Manchester Brussels Office

Merseyside Brussels Office

North of England EU Health Partnership

Kent Brussels Office

5.7 Staff Structure 2014-15



5.8 Budget

The budget for the European Partnership for 2014-15 is £361,050, of which £167,400 comes directly from the local authorities via the East of England LGA. Other income comes from partners and sub-letting as described above.

Through a service level agreement with the University of East Anglia, the European Partnership hosts a number of graduates providing them with EU public affairs work experience to boost their employability.

6 Priority policy/funding areas of activity

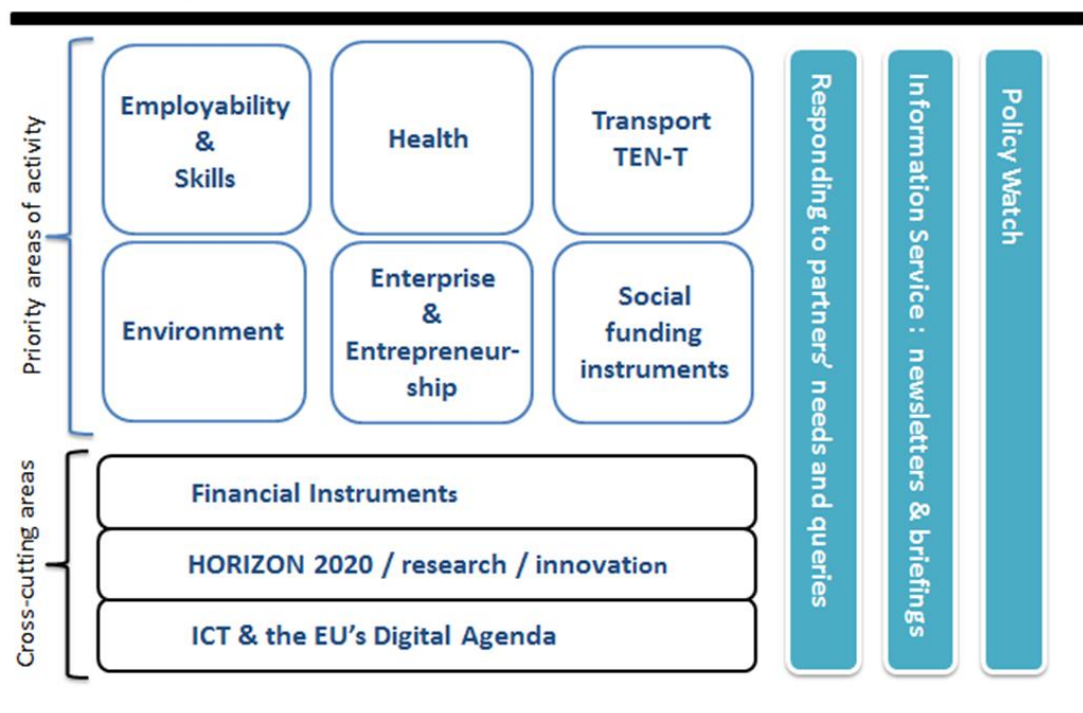
6.1 The East of England European Partnership in 2014-15 will focus its attention on the following policy areas based on partners interest and needs:

- **Employability and Skills:** From the European Social Fund (ESF) to the Erasmus+, the EU plans to focus its investments over the coming 7 years on boosting employment through a better skilled workforce. The European Partnership will support its partners and help them access funding to address local needs and opportunities.
- **Health:** With the new local authority responsibility for public health, as well as the significant research and business opportunities in delivering solutions to the health societal challenges, the European Partnership will focus on funding opportunities that fit the needs and opportunities of its partners. There is a range of EU funding streams which address different aspects of health; from research into solutions to support active ageing (Horizon 2020/Active and Assisted Living Joint Programme/ERDF), to opportunities on public health and health systems (The Third Health Programme), and related social funding instruments (such as EaSI and DAPHNE). Opportunities also exist to engage in shared initiatives, such as the EU's European Innovation Partnership on Active and Healthy Ageing, and other networks which bring together regions, service providers, industry and academia.
- **Transport:** Following positive and constructive engagement with the EU institutions and Department for Transport, a number of routes in the East of England now sit on both the TEN-T Core Network and the new Core Network Corridor, including the A14, A1(M), M25, Felixstowe-Nuneaton rail link, Ports of Felixstowe and Harwich (cluster), London Gateway, Port of Tilbury, and Stansted and Luton airports. Unlocking future investments (including financial instruments) via the new TEN-T financing instrument the Connecting Europe Facility (CEF), will be critical to sustaining economic development and creating jobs. Sustained pressure will be required to ensure the voices of local stakeholders is strong and clear on the emerging Corridor Forum which encompasses the core routes and ports. In addition, improving urban mobility and addressing road safety issues remain key challenges for East of England partners.
- **Environment:** 2013 saw the launch of proposals for new air quality legislation and a review of EU waste targets. The European Partnership has already highlighted the potential impact on local authorities of the new air quality legislation and will continue to support local authorities in the region to ensure the new legislation does not impact them unduly. Likewise the review of waste targets will also be followed closely, building on the consultation response delivered in 2013. Following successes in previous years, there will also be a focus on seeing how the new energy and environment funding programmes can continue to help partners meet their low carbon objectives.
- **Enterprise and Entrepreneurship:** With many local partners committed to supporting SMEs into becoming more innovation-oriented and competitive, there are a number of EU funding programmes of relevance; Horizon 2020 (the successor programme to FP7); COSME (the dedicated programme for supporting SMEs); and ERDF are all designed to boost the competitiveness of businesses through research and innovation. Priority sectors and businesses with high growth potential in the East of England are well placed to take advantage of such funding streams. The take-up generally in the East of England of these programmes is good but more can be done to make the programmes more accessible for SMEs and encourage technology transfer and the commercialisation research.
- **Financial Instruments:** The use of financial instruments using EU funds is now a major tool for investment in support of competitiveness. In addition to the use of

ERDF to develop financial instruments as part of the EU Growth Programme for England, almost every policy area and funding stream from 2014 will use financial tools to maximise the impact of EU funds. Building relations between partners and the European Investment Bank and European Investment Fund as well as new institutions such as the British Business Bank will be crucial. The European Partnership will work to demystify these new tools and communicate appropriate opportunities to partners

- **Social Funding:** 2014 sees the overhaul of funding instruments managed by the European Commission and its Agencies. A raft of new programmes will be publishing new funding opportunities throughout the year across social affairs, justice, and home affairs which relevant to public authorities, civic society, and academic organisations. The European Partnership will support its partners in identifying and assessing relevant opportunities and build transnational contacts and partnerships.

East of England Brussels Office Business Plan 2014-15: priority areas of activity



7 Looking Forward: Priority activity for 2014-15.

- **Grow the visibility of the East of England as well as individual subscribers.** Visibility vis-a-vis policy makers in the European Commission and European Parliament can help influence policy making and helps establish fruitful relationships. Showcasing excellence acts as a marketing tool to attract the best partners when preparing competitive EU funding applications. The European Partnership will continue to use key thematic weeks (eg Open Days, Green Week, EUSEW) and bespoke events to showcase East of England partners.
- **Build strong engagement between the EU and the East of England** to ensure that the funding opportunities and importance of engaging in policy debates are understood and availed of. Building on the EU funding member masterclass held first in September 2013 and the recent visits of Council Leaders to engage with EU policy makers, the European Partnership plans to;

- organise a further EELGA member masterclass on EU funding to ensure local authority members understand the opportunities unfolding for 2014-2020, and
 - develop two Brussels engagement field trips for members and officers (Autumn 2014/Spring 2015)
- **Ensure partners have a strong voice in the determination of key EU investments** With the EU Growth Programme still in development and an operational programme not expected to be agreed between the UK government and the Commission until late 2014 at earliest, much work has still to be done in this financial year to ensure local partners are well placed to make the most of the significant EU investment of the EU Structural and Investment Funds. Similarly with the Connecting Europe Facility (TEN-T), work is ongoing to ensure that local voices can shape the investment decisions on TEN-T routes for 2014-2020. While the European Partnership will concentrate action on the main EU Institutions, partners will equally be supported in their engagement with the lead UK government departments responsible for negotiations with the EU (eg BIS/DCLG/DEFRA, DfT).
- **Prepare partners and individual clients for the next generation of EU funding programmes.** Working closely with the EU Connects service based in the East of England, the European Partnership will provide early intelligence on the relevant calls under the new 2014-2020 EU funding programmes. In addition to the briefings on the changes to the EU funding programmes, the European Partnership and EU Connects will organise several events in the region. Here local partners can develop project ideas, engage with national contact points and be in a strong position to bid early and often for the 2014-2020 programmes.
- **Strengthen the European Partnership budgetary position and consequently its service to partners.** The European Partnership has developed new relationships over the course of 2013/14, notably with the several Local Enterprise Partnerships. It is important that these relationships deepen and provide stability for the funding base after many years of uncertainty for the team.
- Equally where the European Partnership can secure income through contracts with non East of England partners this should be explored. Care will be taken to ensure that any additional contract is complimentary to existing work and does not distract from core service provision to partners. Already a contract has been secured to provide the information services to Greater Manchester, more effort will be made to finding further clients.
- **Information Services:** The European Partnership will continue to deliver high quality information services to partners including the regular policy snapshots and the funding monitor newsletters and more in-depth briefings as and when required.
- **Policy Watch:** While the main focus for the European Partnership team will be the policy areas and funding programmes prioritised under section 6, other EU policy areas will continued to be scanned for opportunities of relevance to partners and reported on as and when necessary.

9 Summary

The European Partnership in 2014-15 will;

- work on both funding and policy issues of key interest to partners including transport, enterprise and entrepreneurship, health and social care, environment, and structural funds
- aim to ensure optimum visibility in EU policy debates with the EU Institutions – working closely with the region’s MEPs - in the above areas for the benefit of the East of England in general and our partner organisations in particular,
- be focussed on preparing partners to be bid competitively into the new 2014-2020 EU funding programmes to address their challenges and opportunities
- aim to broaden the list of service subscribers to strengthen the budget position.

Europe & International Panel

Terms of Reference

- To act as the East of England sub-national forum for the discussion and determination of European and international issues;
- To provide a strong two-way link to the region's MEPs and its members of the Committee of the Regions;
- To ensure key elements of European policy are considered by appropriate fora within the region (e.g. EELGA Portfolio holder networks, Regional Transport Forum etc.);
- To develop East of England responses on European policy development where there is a clear common interest and to marshal effective lobbying activities;
- To promote the drawdown of EU funds of relevance to East of England Partners, and to be a forum where synergies between different EU funds can be exploited/maximised (Horizon2020, LIFE, Erasmus +, INTERREG and the EU Structural and Investment Funds)
- To receive updates on the progress of investment and eventual impact of the EU Growth Programme (ERDF, ESF and some elements of the EAFRD),
- In particular to be a forum for LEPs and local stakeholders to come together and explore opportunities under the EU Growth Programme for projects spanning multiple LEP areas
- To co-ordinate promotion of the East of England in Europe e.g. through relevant overseas networks, embassies and consuls, targeted marketing campaigns and involvement in the EU Open Days and other relevant Brussels-based events;
- To provide UKTI with advice and to inform the development and delivery of overseas trade and FDI activity;
- To dialogue with Sector Skills Council Alliance;
- To promote opportunities for lobbying on and maximising overseas trade and FDI leads through relevant institutions, at an EU level and more widely and
- To act an advisory board to Essex County Council in respect of the management of the East of England European Partnership.

Governance and support

- The Europe and International Panel is to be established as a panel of the East of England LGA
- The Forum will be chaired by the East of England LGA
- The Secretariat for the Forum will be provided by the European Partnership;
- The existing Europe and International Affairs Officer Group will support the Forum.

Membership of the Forum

It is proposed that a discussion on the membership of the Panel will follow agreement on the final terms of reference. In addition to members, a permanent invitation will continue to be extended to MEPs and members of the Committee of the Regions

EIP Membership

Title	First Name	Last Name	Organisation	Representing
CLlr	Graham	Butland	Braintree District Council	EELGA – Conservative (chair)
CLlr	Marco	Cereste	Peterborough Borough Council	EELGA - Conservative
CLlr	Budge	Wells	Central Bedfordshire	EELGA - Conservative
CLlr	Robert	Gordon	Hertfordshire County Council	EELGA – Conservative
CLlr	Ann	Steward	Breckland	EELGA – Conservative
CLlr	John	Lamb	Southend on Sea	EELGA - Conservative
CLlr	David	Bills	South Norfolk	EELGA – Conservative (alternate)
CLlr	Sandy	Martin	Suffolk County Council	EELGA - Labour
CLlr	Roy	Davis	Luton	EELGA - Labour
CLlr	Sue	Carpendale	Babergh District Council	EELGA - Liberal Democrat
CLlr	Robert	Bucke	Tendring DC	EELGA – Independent
Ms	Cecilia	Tredget	EELGA	EELGA Officer
Mr	David	Morrall	Department of Communities and Local Government – ERDF	Head of ERDF and RGF, East of England
Ms	Deborah	Cadman	Suffolk County Council	Honorary Secretary of the Europe and International Forum
Mr	Daniel	Mouawad	South East Midlands Local Enterprise Partnership – Chief Executive	LEP
Mr	George	Kieffer	South East Local Enterprise Partnership – Vice Chair	LEP
Mr	Mark	Jeffries	New Anglia Local Enterprise Partnership – board member	LEP
Mr	John	Gourd	Hertfordshire Local Enterprise Partnership- Chair	LEP
Mr	Grahame	Nix	Greater Cambridgeshire, Greater Peterborough Local Enterprise Partnership- Chief executive	LEP
Mr	Paul	Bird	Director, Essex County Council	Management of European Partnership
Mr	Chris	Parkhouse	East of England Institute of Directors	Representing business community
Mr	Michael	Large	East of England Business Group	Representing business community
Mr	Phil	Laken	National Trust/EEEEF	Representing environmental interests - vacant
Mr	Andrew	Thomson	ACER	Representing further education colleges
Ms	Karen	Livingstone	NHS Eastern Academic Health Science Network	Representing Health sector
Mr	Neena	Patria	National Skills Academy	Representing the skills agenda
Mr	Mark	Mitchell	COVER	Representing voluntary & community sector organisations
Ms	Liz	Basing	UK Trade and Investment	UKTI
Ms	Aimi	MacCormac	Anglia Ruskin University	Representing universities
Mr	Ian	Beggs	Norwich Research Park	Representing innovation interests

- 10 members + 1 officer from the East of England LGA
- The chair of each of the East-ish Local Enterprise Partnerships, or a board member
- A representative from the Department of Communities and Local Government
- 2 member from the business community (e.g. from the East of England Business Group, IOD etc)
- 1 member from UKTI
- 1 member representing environmental interests (e.g. from the East of England Environmental Forum)
- 1 member representing the health community
- 1 member representing innovation interests (e.g. Research Park)
- 1 member representing universities
- 1 member from further educational/adult colleges (e.g. from ACER)
- 1 member representing the skills agenda
- 1 member representing the management of the European Partnership (Essex County Council)
- 1 member representing community sector organisations (e.g. from COVER)
- Honorary Secretary of the Europe and International Forum, a local authority Chief Executive