

Current performance

Fire Safety



Fire Safety - Performance							
Objective	Scope	Target measure	Target	Timescale / Report period	Total for report period	Performance to date	Time scale
Home fire safety Visit	Approx 486 homes	% of total homes	70%	Nov 18 to April 19	61	65%	Apr 19
Smoke Alarms issue	Approx 486 homes plus roadside	% of complete HFSV	70%	Nov 18 to April 19	35	65%	Apr 19
Site Fire Safety Visits	Approx 194 Sites*	% of total sites	75%	Nov 18 to April 19	45	90%	Apr 19
No campaigns this period	County wide	No. of families		Nov 18 to April 19	2 – Fireworks and Stay Safe at Christmas	360	Ongoing
* Site count 194 – based on primary site model.							

Essex Countywide Traveller Unit Operations/Performance Update – 5th June 2019

Site Fire Safety Visits

Coverage on the primary sites is currently at 90% having received at least one site fire safety visit. Over time, and due to the fluid nature of the sites/occupants, 62 sites have had a second visit, and 12 a third. This is an ongoing assessment across all sites.

295 site fire safety visits completed

We also record photographic records of potential issues around site access/entry and hydrant location/status to ensure no issues for access.



Home Fire Safety Visits

Coverage since inception - Home Fire Safety Visits have been delivered to homes in over 70% of the known plots. There is no definitive number of the total potential homes to further equate coverage, but estimating 673 possible homes. We have delivered a total of

474 Home Fire Safety Visits across Essex

Smoke Alarms

506 Smoke Alarms issues across Essex

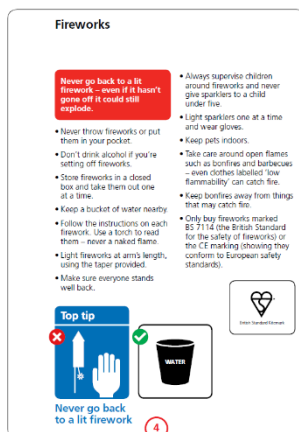
Site Health and Fire Safety Events

Once again, we will be holding Health and Fire Safety events on selected sites across Essex targeting Fire Safety issues with Adults and children. This has proved very effective in the past, so expect a continuation of this,

Winter Campaigns

We have repeated the “Stay Safe at Christmas” campaign and “Fireworks” Safety

Essex Countywide Traveller Unit Operations/Performance Update – 5th June 2019



Ongoing Fire Safety Visits

In addition to the current program of visits as part of the overall ECTU outreach work by the individual outreach officers, we are commencing more targeted campaigns, targeting specific areas with multiple officers.

Plus we are seeking funding for the SOS bus to return to Oak Lane/Basildon sites which will facilitate more Fire Safety work on sites.

Essex Countywide Traveller Unit
Operations/Performance Update – 5th June 2019



Public Health

Health									
Objective	Sub objective	Scope	Target measure	Target	Timescale / Report period	Performance at previous reporting period	Performance for Report period *	Time scale	Comments
Signposted to received primary Immunisation		Unknown	No.	50	Nov 18 to April 19	31	1	Apr 19	Total 32
Signposted to receive the flu jabs		Unknown	No.	150	Nov 18 to April 19	192	25	Apr 19	Total 217
Number confirmed/assisted to register with GP	Permanent	Unknown	No	40	Nov 18 to April 19	25	15	Apr 19	Total 40
	Temporary	Unknown	No	na	Nov 18 to April 19	0		Apr 19	Total 0
Number confirmed/assisted to register with Dentist	Permanent	Unknown	No.	50	Nov 18 to April 19	8	0	Apr 19	Total 8
	Temporary		No.	na	Nov 18 to April 19	0		Apr 19	
Identified Long Term Condition		Unknown	No.	25	Nov 18 to April 19	0	0	Apr 19	Total 0

Health cont.

Objective	Sub objective	Scope	Target measure	Target	Timescale / Report period	Performance at previous reporting period	Performance for Report period	Time scale	Comments
Number referred to stop smoking/alcohol and healthy eating, and Child Safety etc		Unknown	No.	50	Nov 18 to April 19	44	21	Apr 19	Total 65
Ad hoc Campaigns –									
Diabetes Awareness		Unknown	No.	Na		0	88	Apr 19	Total 88
Sugar Swap		Unknown	No.	Na		0	83	Apr 19	Total 83
Health Screening/Check		Unknown	No.	Na	Nov 18 to April 19	0	131	Apr 19	Total 131
GP Reg Info		Unknown	No.	Na		0	56	Apr 19	Total 56
Dial 111		Unknown	No.	Na		191	91	Apr 19	Total 282
Cervical Smear		Unknown	No.	Na		0	52112	Apr 19	Total 112

There is a lot of support/signposting carried out by the outreach team which is not reflected in the above reporting, including direct support to Health Visitors, referrals for specialist support ie Speech and Language, direct support in making and attending medical appointments, mental health referrals, support in obtaining disability aids etc.



DRAFT

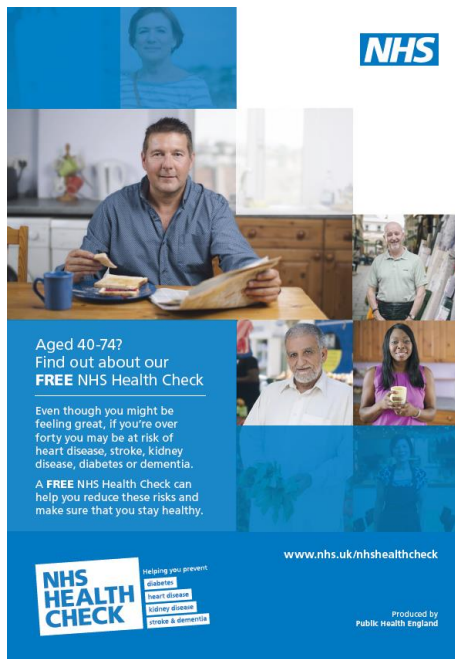
Essex Countywide Traveller Unit

Operations/Performance Update – 5th June 2019

We are continuing to work to the original performance measures, but also continue to utilise national campaigns to deliver on these outcomes.

Recent and ongoing campaigns include: -

Health Check



The Original version

ECTU revised version

To improve your health

- In the heart a blocked artery can cause a heart attack or angina.
- The kidneys can be damaged by high blood pressure or diabetes, causing chronic kidney disease and increasing your risk of having a heart attack.
- Being overweight and physically inactive can lead to type 2 diabetes.
- If unrecognised or unmanaged, type 2 diabetes could increase your risk of further health problems, including heart disease, kidney disease and stroke.

Contact:

- Your Doctors Surgery
- Or 111 to find your nearest surgery
- Or your ECTU Outreach Officer Nicola Coates 07979 857149

Both men and women can develop these conditions, and having one could increase your risk of developing another in the future.

- In the brain a blocked artery or a bleed can cause a stroke.

ECTU
Essex Countywide Traveller Unit

Essex Countywide Traveller Unit Operations/Performance Update – 5th June 2019



Sandiacres Bus – there has been an extended period where the bus was off the road, and it was thought unrepairable, but we've now been informed that it is operational again, so will be recommencing use on site.

Oak Lane / Basildon Bus – there are funding bid in progress to support the return of the SOS bus back on to Oak Lane/Basildon sites. This was previously hugely beneficial in accessing the community in regards to health, education and fire safety issues.

Mental Health – we are in the process of seeking to introduce outreach on mental health for young people. This is traditionally a taboo subject within the community, but it is planned to set up a an engagement process through the parents initially to enable us to engage with the young people and to capture their view on mental health in the community.

Wood Corner Community space – there are now monthly events taking place in the community room on the Wood Corner Caravan Site, working with families on health, education and safety issues. Local branches of Tesco have supported some events, providing fruit and milk for the children to promote healthy eating.

Health and Safety events

As mentioned under the Fire heading, we are in the process of planning this years' Health and Fire Safety events on selected Caravan Sites. This year the intention to concentrate on

Blood pressure monitoring

Fire safety

Emergency First aid training

Healthy eating/sugar swap

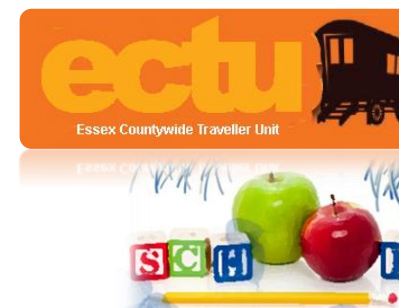
Essex Countywide Traveller Unit Operations/Performance Update – 5th June 2019

Plus anything else picked up on site

Benefits/Universal Credit

Significant support has been required reference benefits, and specifically the move to Universal Credit. Basildon are currently moving everyone over and due to literacy issues and the “online” access / multiple choice telephone access, this is excluding many Gypsy/Travellers to be able to access/resolve without direct support. The ability to resolve all impacts on wellbeing/health.

DRAFT



Education

Education								
Objectives	Scope	Target measure	Target	Timescale / Report period	Performance at previous reporting period	Performance for Report period	Time scale	Comments
Number of Children supported into pre-school /school 2 – 16	unknown	No.	150	Nov 18 to April 19	112	111	April 19	Total 123
Number of children transferring from primary to secondary	unknown	No.	15	Nov 18 to April 19	14	0	Mar 19	Total 14
Number of young adults supported into further education	unknown	No.	15	Nov 18 to April 19	15	26	Mar 19	Total 41
Number of transport applications Supported	unknown	No.	40	Nov 18 to April 19	66	49	Apr 19	Total 115
Number of 2 year olds funded applications supported	unknown	No.	40	Nov 18 to April 19	2	9	Mar 18	Total 11

There is a lot of additional work that goes on around education in terms of supporting meetings at schools, supporting with uniform issues, bullying issues, attendance meetings and home education.

Essex Countywide Traveller Unit

Operations/Performance Update – 5th June 2019

A key element of education support which is not covered the reported figures is around **attendance**. We have supported **155** children during the reporting period with issue in attendance including those with specialist requirement/special educational needs, which is all vital works in ensuring the children and in school and being educated.

Another area of high workload and challenge is **school transport**. This obviously does not specifically apply to the Gypsy/Traveller Community, but changes in the Policy around transport have resulted in children not being able to attend the same school as their siblings, and as a result are now missing from education. The policy can also be a little challenging to the community, with literacy issues etc, hence needing additional support to navigate.

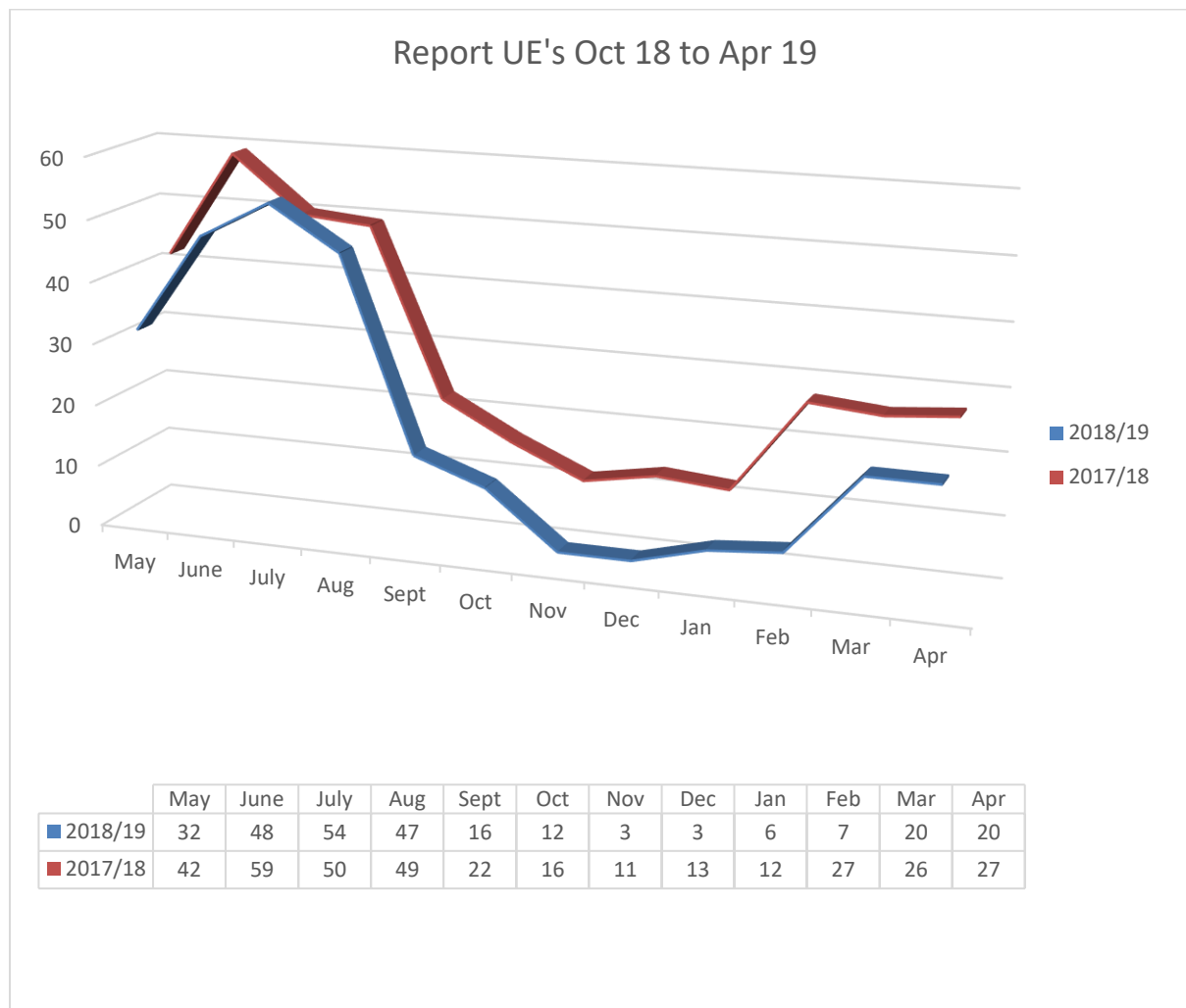
In addition, we are also supporting some families re home education and bullying issues at school.

Essex Countywide Traveller Unit

Operations/Performance Update – 5th June 2019

Unauthorised encampments

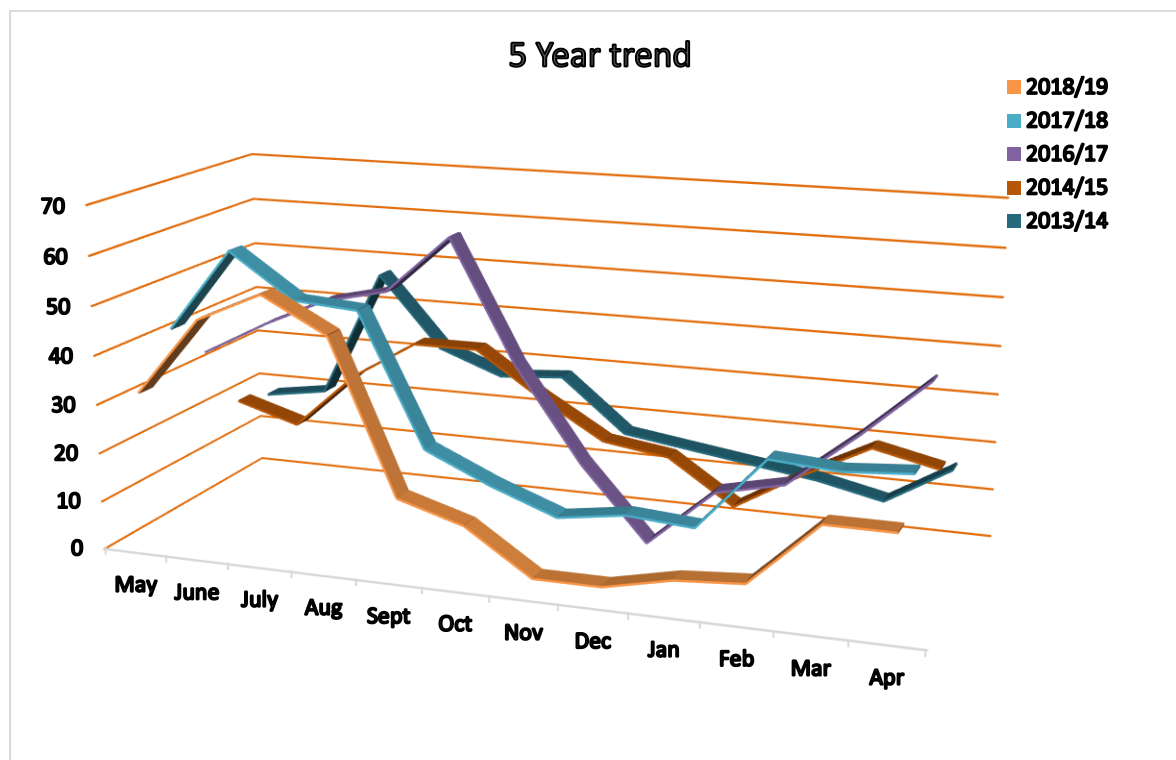
The early drop off of encampments at the end of summer 2018 has continued, showing a reduction in the number of encampments reported between October 2018 and April 2019.



In terms of overall number for the period October 2018 and April 2019 we are showing a reduction in the total recorded encampments of **46%** based on the same period for 2017/18. There were still 71 encampments reported encampments for this period.

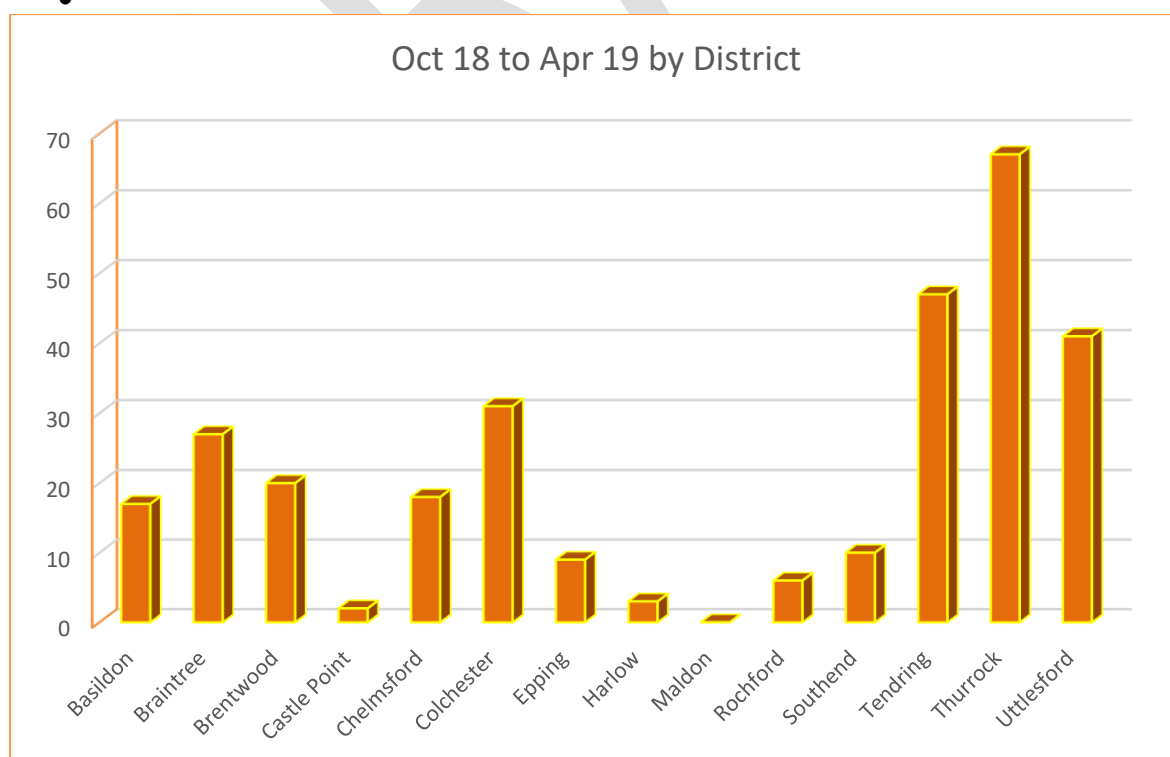
We are looking at a 5 year low for the winter/early spring in encampments but are starting to see the expected seasonal increase kicking in, and we expect number to peak in the main holiday period be June and September.

Essex Countywide Traveller Unit Operations/Performance Update – 5th June 2019

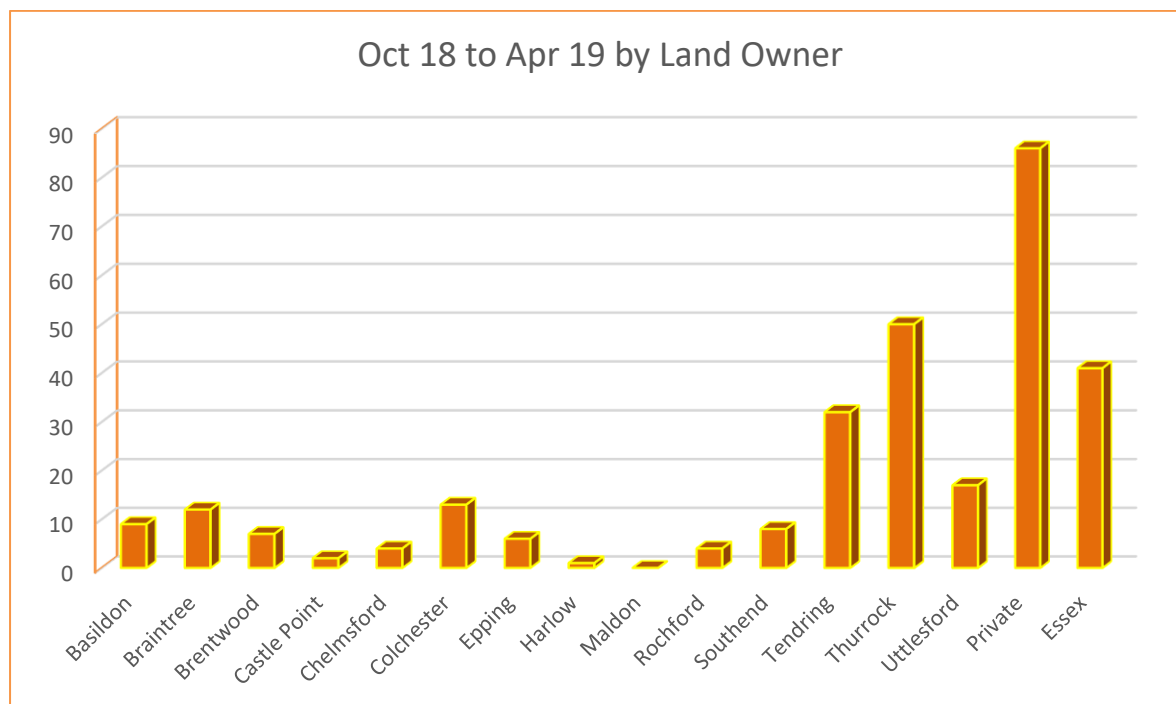


The following charts show UE activity:-

- by district which will include Highways and Private encampments under the district heading
- by Land Owner
-



Essex Countywide Traveller Unit Operations/Performance Update – 5th June 2019



Post encampment issues

Part of the process of managing encampments, is to take into consideration behaviour at previous encampments as to the actions taken going forwards. We are sometimes finding that the efficiency of the street cleansing teams are such, that they are completing post encampment clearance before we can assess/document the condition the site was left in. Could we therefore have contacts at the respective street cleansing teams to arrange for some photograph evidence to be provided before clear-up?

Horses

We get a lot of calls around horses around UE's and in general. This is currently outside of the remit of ECTU and was previously taken to the Joint Committee reference the possible inclusion of a service but this was rejected.

Unauthorised Developments.

There is often an assumption that all things Gypsy/Traveller come through to ECTU from partner authorities – which has often included UD's. We therefore need to ensure that there is a mechanism in place at the respective call centres and websites, to ensure that the correct identification is made and forwarded to the correct dept.

Homeless

There are increasing reports of non-traveller encampments – so effectively homeless people in tents/temporary structure. This is currently outside of the ECTU remit and will fall to the relevant land owner to take the appropriate action.

Essex Countywide Traveller Unit

Operations/Performance Update – 5th June 2019

Injunctions

Basildon are in the process of applying for the full injunction following the interim injunction granted.

Harlow injunction extension expires next summer, and they starting to prepare/consider application for a further extension.

Thurrock are still working on an application for an authority wide injunction and named individuals on specified pieces of land.

Bromley by Bow - Leigh-Ann Mulcahy, QC, sitting as a deputy High Court judge, refused to grant a final five-year injunction, and said that the ban sought was “unduly wide and disproportionate”. The High Court granted Bromley a more limited injunction preventing people from fly-tipping, depositing substantial amounts of waste, or entering parks and car parks in vehicles for the purposes of waste disposal or fly-tipping. The judge expressed doubt about making the injunction on the basis of s187B of The Town and Country Planning Act 1990 (breach of planning control) given the existence of permitted development rights.

In addition, the judge made clear her concerns about the impact of these injunctions on the ability of Gypsies and Travellers to pursue their traditional way of life, particularly given the shortage of sites.

Canterbury City Council - gained an injunction in March 19 against a number of specified pieces of land in their area.

Central Bedfordshire – gained an injunction in October 2018 banning 11 named individuals from setting up encampment in the area for 2 years. It also covers persons unknow from camping on specific parcels of land across the authority area.

Nuneaton and Bedworth – were granted an interim injunction on named individuals and persons unknown from occupying land within its boundaries. A total of 141 sites across Nuneaton and Bedworth formed part of the injunction application.

Essex Countywide Traveller Unit Operations/Performance Update – 5th June 2019



Unauthorised Encampments - Performance						
Objective	sub	Measure	Target	Timescale	Outcome	Comments
UE visited within 1 working day		%	97%	Nov 18 to Apr 19	97%	2 encampments were known f
Encampments resolved through	Negotiated	%	40%		50%	
	Courts	%	60%		43%	
Totals	Section 77/8 Part 55 Section 61 Negotiated	17 0 9 20	Data Only			
s77's complete within 10 working days		%	100%		94%	1 encampment was initially tolerated before going to s77/8
s77's complete within 7 working days		%	90%		94%	As above
% of encampments where ECTU are involved		%	NA		68%	
Number of encampments	Partner	45	NA			
	Non-partner	4	NA			
	Private	22	NA			

Essex Countywide Traveller Unit Operations/Performance Update – 5th June 2019



Training

The Member Development Steering group at ECC recent received a formal training session on Gypsy/Traveller history/culture and issues. This was a lively, interactive session which was well received. It was suggested that this might be rolled out to our partner authorities.

DRAFT