



Essex County Council

People and Families Policy and Scrutiny Committee

10:30	Thursday, 13 September 2018	Committee Room 1, County Hall, Chelmsford, CM1 1QH
--------------	--	---

For information about the meeting please ask for:

Gemma Bint, Democratic Services Officer

Telephone: 033301 36276

Email: gemma.bint@essex.gov.uk

Pages

Private Pre-Meeting for PAF Members Only

Please note that there will be a private pre-meeting for committee members at 9.30am in Committee Room 6, County Hall.

- | | | |
|----------|--|--------------|
| 1 | Membership, Apologies, Substitutions and Declarations of Interest | 4 - 5 |
|----------|--|--------------|

- | | | |
|----------|---|---------------|
| 2 | Minutes
To approve as a correct record the minutes of the meeting held on 02 August 2018. | 6 - 11 |
|----------|---|---------------|

- | | | |
|----------|----------------------------------|--|
| 3 | Questions from the Public | |
|----------|----------------------------------|--|

A period of up to 15 minutes will be allowed for members of the public to ask questions or make representations on any item on the agenda for this meeting.

On arrival, and before the start of the meeting, please register with the Senior Democratic Services Officer.

- | | | |
|----------|---|----------------|
| 4 | Essex Safeguarding Children Board Update
To consider report (PAF/19/18) | 12 - 59 |
|
 | | |
| 5 | Work Programme

To consider report (PAF/20//18) | 60 - 62 |
|
 | | |
| 6 | Date of Next Meeting
To note that the next Committee activity day is scheduled for 11 October 2018, which may be a private Committee session, public meeting, briefing, site visit, etc. - to be confirmed nearer the time. | |
|
 | | |
| 7 | Urgent Business
To consider any matter which in the opinion of the Chairman should be considered in public by reason of special circumstances (to be specified) as a matter of urgency. | |

Exempt Items

(During consideration of these items the meeting is not likely to be open to the press and public)

To consider whether the press and public should be excluded from the meeting during consideration of an agenda item on the grounds that it involves the likely disclosure of exempt information as specified in Part I of Schedule 12A of the Local Government Act 1972 or it being confidential for the purposes of Section 100A(2) of that Act.

In each case, Members are asked to decide whether, in all the circumstances, the public interest in maintaining the exemption (and discussing the matter in private) outweighs the public interest in disclosing the information.

- | | |
|----------|---|
| 8 | Urgent Exempt Business
To consider in private any other matter which in the opinion of the Chairman should be considered by reason of special circumstances (to be specified) as a matter of urgency. |
|----------|---|

Essex County Council and Committees Information

All Council and Committee Meetings are held in public unless the business is exempt in accordance with the requirements of the Local Government Act 1972. If there is exempted business, it will be clearly marked as an Exempt Item on the agenda and

members of the public and any representatives of the media will be asked to leave the meeting room for that item.

The agenda is available on the Essex County Council website, <https://www.essex.gov.uk>. From the Home Page, click on 'Your Council', then on 'Meetings and Agendas'. Finally, select the relevant committee from the calendar of meetings.

Attendance at meetings

Most meetings are held at County Hall, Chelmsford, CM1 1LX. A map and directions to County Hall can be found at the following address on the Council's website:

<http://www.essex.gov.uk/Your-Council/Local-Government-Essex/Pages/Visit-County-Hall.aspx>

Access to the meeting and reasonable adjustments

County Hall is accessible via ramped access to the building for people with physical disabilities.

The Council Chamber and Committee Rooms are accessible by lift and are located on the first and second floors of County Hall.

Induction loop facilities are available in most Meeting Rooms. Specialist headsets are available from Reception.

With sufficient notice, documents can be made available in alternative formats, for further information about this or about the meeting in general please contact the named officer on the agenda pack or email democratic.services@essex.gov.uk

Audio recording of meetings

Please note that in the interests of improving access to the Council's meetings, a sound recording is made of the public parts of many of the Council's Committees. The Chairman will make an announcement at the start of the meeting if it is being recorded.

If you are unable to attend and wish to see if the recording is available you can visit this link <https://cmis.essexcc.gov.uk/Essexcmis5/CalendarofMeetings> any time after the meeting starts. Any audio available can be accessed via the 'On air now!' box in the centre of the page, or the links immediately below it.

Should you wish to record the meeting, please contact the officer shown on the agenda front page

Agenda item 1

Committee: People and Families Policy and Scrutiny Committee

Enquiries to: Graham Hughes, Senior Democratic Services Officer

Membership, Apologies, Substitutions and Declarations of Interest

Recommendations:

To note

1. Membership as shown below
2. Apologies and substitutions
3. Declarations of interest to be made by Members in accordance with the Members' Code of Conduct

Membership

(Quorum: 4)

Councillor M Maddocks
Councillor J Baker
Councillor J Chandler
Councillor G Butland
Councillor J Deakin
Councillor M Durham
Councillor B Egan
Councillor J Henry
Councillor J Lumley
Councillor P May
Councillor M McEwen
Councillor P Reid
Councillor C Souter
Councillor A Wood

Chairman
Vice Chairman
Vice Chairman

Non-elected Members

Richard Carson
Lee Cromwell
Marian Uzzell

Minutes of the meeting of the People and Families Policy and Scrutiny Committee, held at 10.30am in Committee Room 1 County Hall, Chelmsford, CM1 1QH on Thursday, 2 August 2018

Present:

County Councillors:

M Maddocks (Chairman)

J Baker

G Butland

J Chandler

J Deakin

M Durham

B Egan

J Henry

J Lumley

P May

M Platt (substitute)

C Souter

Cllr Reeves (HOPSC Chairman) attended at the invitation of the chairman.

The following officer was present in support of the meeting:

Graham Hughes, Senior Democratic Services Officer

1 Membership, Apologies, Substitutions and Declarations of Interest

The report on Membership, Apologies, Substitutions and Declarations was received and noted. Apologies for absence had been received from Councillors McEwen (for whom Councillor Platt substituted), P Reid and A Wood and R Carsen, Educational co-optee.

The following declarations of interest were made:

Councillor Butland – Chief Executive Officer of East Anglia's Children's Hospices.

Councillor John Baker – previous work with Home Start (Colchester).

Councillor Jenny Chandler – Chairman of the Chelmsford District Advisory Board.

2 Minutes

The draft minutes of the meeting held on 14th June 2018 were approved subject to a minor typo being corrected with 'Councillor Butler' being replaced by 'Councillor Butland' just before the formal resolution towards the end of Minute 4.

3. Questions from the Public

There were no questions from the public

4. Pre-birth to 19 Virgin Care contract

Background

Essex County Council (ECC) had commissioned integrated Pre-Birth to 19 Health, Wellbeing and Family Support services on a quadrant basis with effect from 1 April 2017. The service incorporated the following:

- 0-5 Healthy Child Programme (included Health Visiting)
- 5-19 Health Child Programme (included School Nurses)
- Healthy Schools Programme (improving the health and wellbeing of children in school)
- Family Nurse Partnership (FNP) model of working (provided support for young mums with their first child)
- Sure Start Children's Centres (community based support for children and families)

The procurement adopted a new delivery model based around 12 Family Hubs, Family Hub Delivery Sites and a range of Family Hub Outreach Sites determined on a local basis.

In the west quadrant of Essex the service was commissioned jointly with West Essex Clinical Commissioning Group (West Essex CCG) as it also included some additional NHS community paediatric and therapy services.

The Committee had asked for an update on the new service one year into the new contract. However, the Committee had agreed in advance to concentrate its initial review on the core services that were pan-Essex. Report (PAF/17/18) had been received comprising an update from the lead commissioner and provider.

The following were in attendance to introduce the updates and answer questions:

Commissioner

County Councillor Dick Madden, Cabinet Member, Children and Families.
Chris Martin, Director, Strategic Commissioning & Policy (C&F), Essex County Council.

Provider

Heidi Dennis, Assistant Director, Barnardos
Kathleen Ely, Virgin Care
Vivienne McVey, Board Member, Virgin Care
Zoe Oddy, Quadrant Manager, Mid Essex, Virgin Care

Context

After a brief introduction from the Cabinet Member, Ms McVey provided some context to the new contract which had started in April 2017.

- The launch of the service was the biggest and most ambitious transformation undertaken by Virgin Care.
- Integration had been challenging as each of the service templates and models inherited from each of the previous provider organisations had been very different.
- There had been significant rationalisation of estate -with services reorganised into four quadrants using a broad hub and spoke model. Space had also been rented at other locations to deliver services and expand outreach.
- IT systems from ten different organisations had been consolidated into one.
- The contract was outcomes based rather than counting activity so future performance would need to be measured differently.
- There had needed to be a huge cultural shift amongst staff.
- There were now more ways for families to feedback on their experience. Citizen's Panels were now encouraging wider community input and not just from families.

In subsequent discussion the following was highlighted:

Service delivery

The new contract had rationalised the buildings from where services were delivered and how services could be accessed but had not materially changed the actual services. There was still a range of sites and now a single point of access for services - if necessary the providers would undertake home visits. Providers were also looking to use libraries more to assist outreach.

Contract partners were being encouraged to also occupy the delivery sites. For example, family hubs now had a Health Visitor located on site whereas previously Health Visitors had been less accessible.

The remit of Health Visitors had been stretched with them now being the key point of contact for children under 8 (rather than 5 as previous).

School nurses would now go into school assemblies early in academic year. A weekly drop-in was now offered for young people to access a school nurse emphasising that they do not need parental permission. A text service had also been launched enabling pupils to directly access the school nurse for advice. Better links were also being developed between school nurses and the Emotional Wellbeing and Mental Health Services being provided by North East London Foundation Trust.

Members queried post 19 transition and arrangements for this. It was stressed that there was now better engagement with other partners to

assist this, including Adult Community Learning. A specific programme was being developed for those with special educational needs.

Reach

Members queried whether the actual reach of services had been extended. The provider stressed that they were being more proactive about improving this. Specific plans were being developed for young children struggling with school readiness.

Staffing

1300 staff had been transferred over to Virgin Care/Barnardo's using Transfer of Undertakings (Protection of Employment) Regulations 2006 (TUPE). There had been some resistance to the changes from staff. Some working practices inherited from the previous contracts had significantly varied across locations and trying to make the service offer consistent across all locations had created some staffing issues.

Life limiting/threatening conditions

There was no mention of children with life limiting/threatening conditions in the stated outcomes for the service and just one mention in the quality report. Some members queried whether there was a joint health and social care plan for these children, the level of participation in the regional palliative care network, and whether families had independence over their personal budgets. However, the direct commissioning of palliative care services was not within the Virgin Care 0-19 contract. It was suggested that carer and sibling support should get picked up in family hubs. However, commissioning of palliative care services would vary across the county and would benefit from more consistent integrated commissioning of children's services such as in west Essex. It was confirmed that there was a statutory responsibility for ECC to fund short break respite care.

Action: Councillor Butland to raise with Cabinet Member and a further update for the Committee be scheduled.

Community based paediatric services

Community based paediatric services in west Essex had been included in the contract. Members questioned how this could be extended to cover other parts of Essex and it was suggested that this could be a future line of enquiry here for the Health Overview Policy and Scrutiny Committee. In addition, ongoing differences in diagnosis and referral times for autism could also be reviewed by the same Committee.

A network of community paediatricians had been established as part of reviewing autism care pathways. Allergy services had been developed into a more specialist service as a result of increasing demand.

Key performance indicators

The contract aspired to move away from counting activity levels to be more outcome focussed and assess the effectiveness of services. However, measuring some of these desired outcomes could be difficult. For example, one target was to develop stronger attachments for children but it was still unclear what tool could be identified to measure it.

27 broad outcome measures were to be agreed between commissioner and providers by 1 April 2019. The proposed timing was considered to be a realistic deadline bearing in mind the level of transformational change being undertaken (such timing had been agreed within the contract). The Cabinet Member stressed that he was assured that the necessary preparatory work was being done to meet this deadline and he too wanted to see robust quantitative measures of performance outcomes finalised.

Conclusion

The Chairman thanked all the witnesses for their attendance and advised that the Committee would be looking for a further update in due course.

[after the end of the formal meeting the Committee discussed its next steps and agreed it would undertake the following before speaking again with commissioners and Virgin Care:

- (i) conduct site visits of Family Hubs;
- (ii) seek feedback from sub-contractors;
- (iii) seek feedback from service users or similar representative bodies/forums.

A further update on arrangements for children's palliative care would also be scheduled.]

5. Work Programme

The committee considered and noted report PAF/18/18.

6. Date of Next Meeting

The date of the next Committee activity day was Thursday 13 September 2018 which may be held in public, be a private session, briefing or site visit – to be confirmed nearer the time.

There being no further business the meeting closed at 12.30pm.

Chairman

		AGENDA ITEM 4
		PAF/19/18
Committee:	People and Families Policy and Scrutiny Committee	
Date:	13 September 2018	
Enquiries to:	Name: Alison Cutler Designation: Business Manager Essex Safeguarding Children Board Contact details: 0333 013 9168 alison.cutler@essex.gov.uk	

Update on the work of the Essex Safeguarding Children Board

Introduction

The committee last reviewed the work of the Board in February 2018. At that time it was agreed to reschedule the annual review of their work to align with the publication of their Annual Report in late summer.

Enclosed:

- Briefing paper on the work of the Essex Safeguarding Children Board
- Annual Report – link on the ESCB website

Focus

The update will be on:

- (i) current priorities and how these are being worked on and progressed.
- (ii) A summary of statutory guidance which removes the statutory framework for Local Safeguarding Children Boards, replacing it with new requirements for specific partners.
- (iii) An explanation of The Effective Support for Children and Families guidance.
- (iv) Some examples of previous work undertaken by the Board

Action required: to consider the update, issues arising and any further work to be scoped

Briefing for Scrutiny Members

13th September 2018



E S S E X
Safeguarding
Children
B O A R D

Contents

ESCB Annual Report 2017-18 Summary	<u>3</u>
Summary of Working Together 2018 Statutory Guidance	<u>7</u>
Effective Support for Children and Families in Essex	<u>10</u>
Examples of work carried out since the last Scrutiny:	
Stay Safe Conferences	<u>11</u>
Thematic review of teenage suicide in Essex	<u>13</u>

ESCB Annual Report 2017-18 Summary

The Annual Report covers the main areas of work carried out for the period 1 April 2017 – 31 March 2018 – the full report can be found on the [ESCB website](#).

Essex Overview – Local Context

The vast majority of the 309,000 children in Essex led healthy, safe lives, in 2017-18, but a small minority faced challenges in their life and family circumstances which puts their wellbeing and safety at considerable risk.

The Board

- Developing policies and procedures and scrutinising and challenging local safeguarding practice.
- Working with partners as well as Southend and Thurrock Boards over the coming year to review current arrangements and plan for any changes following the new Working Together.

ESCB Strategic Priorities – what we did in 2017-18

Priorities agreed by Board based on key areas of work arising from local practice, case reviews, and national priorities.

Strategic Priority 1: The Local Safeguarding Context

Online Child Sexual Abuse (CSA) campaign

- Online abuse is present in over 60% of CSE investigations across Essex
- Aimed to raise awareness of privacy settings, provide parents with tips, advice and what to do if concerned and provide children with advice on what to do if worried about something they have seen or been asked to do online.
- The campaign got press coverage and performed well on social media.

Operation Henderson CSE Campaign

- Multi-agency pilot project focusing on child exploitation across Essex railway networks. Targeting Epping Forest, Braintree and Basildon.
- Two weeks of activities and a new role for station staff of Child Exploitation and Trafficking Transport Network Advisors was created.
- Aimed to raise awareness and identification of child exploitation and trafficking with rail staff, rail retail outlets, businesses close to stations and the public.
- The outreach work and videos created for this campaign were particularly successful.

Child Sexual Exploitation (CSE) schools and workforce survey

- Schools survey gained understanding of young people's awareness of CSE/online safety and resulted in promoting the use of Key Stage 2 and Key Stage 3 CSE learning resources within schools.
- Whole workforce survey captured understanding of the workforce confidence in identification, response, service delivery and intervention. Learning and

Development Standards were developed and an advanced level training course on CSE commissioned via the NWG CSE Response Unit. Results also led to the Working with Children and Young People session at the CSE Champions Forums jointly delivered by the ECC Involvement Service and a group of young people.

SET Memorandum of Understanding (MOU) – Foster Carers, Children’s Homes / Sub- Committee expansion

- Creation, implementation and delivery of the Memorandum of Understanding (MOU) and planning for missing
- Enables early planning for children who go missing from care, and those deemed at risk of exploitation

Working with the other Boards to identify cross-cutting issues

- Supported the Domestic Abuse Board with organising the Domestic Abuse Conference in November 2017, which 168 people attended from a range of agencies.
- Planning joint learning events with the Domestic Abuse Board and Safeguarding Adult Board in order to build on cross-cutting issues and further embed learning arising from reviews across all three Boards.

Building knowledge and capacity across local councils

- Local e-learning training to develop awareness of safeguarding
- Appointment of new Safeguarding Officers within Local Authorities

Strategic Priority 2: Early Help and Early Intervention

Serious Case Reviews or Partnership Learning Reviews

- Helped inform the re-commissioning of the young carers service.
- Learning disseminated via a learning bulletin.

Effective Support for Children and Families document

- Updated to reflect current practice.
- Launch events held across the county, supported by the Stay Safe groups.

Sudden Unexplained Deaths in Infants (SUDIs)

- Rise in number of SUDIs where co-sleeping or sleep surface a modifiable factor
- Re-launch of Safer Sleeping campaign.
- Number of notifications fell in the year 2017-18 and there have been no SUDI deaths in SET areas in the year 2018-19 to date.

Strategic Priority 3: Emotional Health and Wellbeing

Thematic review findings and actions

Rise in the number of teenage suicides in Essex in 2017. Actions from review include:

- Learning to be shared widely including via a conference for strategic leads as well as to local areas via the Stay Safe.

- ESCB refreshed its schools toolkit on suicide prevention in order to support schools in their work to promote emotional wellbeing. This is further supported by a wellbeing website.
- The ESCB continues to work with partners in promoting the wellbeing of young people by promoting useful websites and organisations.

Emotional Wellbeing and Mental Health Services

- Emotional Wellbeing and Mental Health page has been set up on ESCB website, which includes information on the Emotional Wellbeing and Mental Health Information Portal for Schools and online counselling services.
- Social media posts around Kooth and Big White Wall always perform highly, showing a need for this information locally.
- The Health Executive has monitored the Emotional Wellbeing and Mental Health Services for Children and Young People to ensure effective arrangements for the delivery of the service and support the agenda to reduce self-harm and prevent suicide.

Strategic Priority 4: Strong Leadership and Strong Partnership

Involvement of Young People in CSE campaigns - participation of children and young people in the language and graphics used.

Voice of families – workshops in West Essex - Three family solution volunteers presented their stories and the positive experience they had of being supported by services that enabled them to make positive sustained changes in their lives

Safeguarding children with disabilities training - It had been identified that there was a lower than expected number of children with disabilities subject to a child protection plan.

Regional and national work

- ESCB Business Manager is the chair of the regional Business Managers group.
- ESCB Child Exploitation Project Manager is an Advisory Board Member for the Centre of Expertise on Child Sexual Abuse/Exploitation.

Improvement work – supporting other LSCBs

- SET SCDOP received requests to share Child Death Review and Rapid Response processes with other LSCBs.
- Child Exploitation Project Manager has undertaken diagnostic work within LSCB and Children's Social Care (CSC) Settings in other Local Authorities.
- The Business Manager has also supported these LSCBs in areas such as learning and development and business planning and improvement.

Child Death Overview Panel (CDOP)

- Learning from Child Death Reviews has been shared across SET, aimed at preventing deaths in the future.

- Working with other local authorities when a child normally resident in another area dies in Essex (bouncy castle incident in 2016).

Developing new ways of working

Stay Safe groups are trialling forums where health and social care professionals come together to discuss safeguarding related issues and concerns around particular cases in order to find solutions where opinions differ.

Communication activities to raise awareness of safeguarding

- Visible presence at various events such as the Domestic Abuse Conference and Stay Safe events.
- Average of 15,700 total hits to the ESCB website each month, 250 new Twitter followers with 1700 reached by the end of 2017-18 and Facebook followers have doubled in the last year to more than 800.

Engagement with the voluntary sector

- 47% of the attendees at the multi-agency level 2 course are from the voluntary sector, showing good engagement.
- Practice Development Manager has attended the Essex Council for Voluntary Youth Services (ECVYS) cluster meetings which are run quarterly.
- Practice Development Manager presented a workshop on policies, procedures and training at the ECVYS conference in Oct 2017
- ECVYS representative is also helping the Board with plans for the changes under the Children and Social Care Act.

Summary and Next Steps

There remains as always more to do and this is a challenge given reducing resources, restructures amongst partner agencies and the future changes to multi-agency safeguarding arrangements and the impact of this on Essex. We will however look to build on progress made this year as we move forward to develop our new arrangements in line with the new legislation – this will certainly include working even more closely with other Boards across Southend and Thurrock as well as more widely across the Eastern region.

Summary of Working Together 2018 Statutory Guidance

The Children and Social Work Act received Royal Assent in May 2017 (<http://services.parliament.uk/bills/2016-17/childrenandsocialwork.html>).

It removes the statutory framework for Local Safeguarding Children Boards, replacing it with new requirements for specific partners to establish multi-agency safeguarding arrangements – ‘MASA’.

Supporting regulations and “Working Together 2018” statutory guidance were published in June 2018 : <https://www.gov.uk/government/publications/working-together-to-safeguard-children--2>

Under the new legislation, three safeguarding partners (local authorities, chief officers of police, and clinical commissioning groups) must make arrangements to work together with relevant agencies (as they consider appropriate) to safeguard and protect the welfare of children in the area.

The geographical footprint for the new arrangements is based on local authority areas. Every local authority, clinical commissioning group and police force must be covered by a local safeguarding arrangement.

Timescales

Safeguarding partners have **up to 12 months from 29 June 2018**, to agree their local arrangements and which relevant agencies they consider appropriate should work with them to safeguard and promote the welfare of children in their area.

Safeguarding partners must **publish their arrangements by 29 June 2019**, but may do so at any time before the end of that period.

Following publication of their arrangements, safeguarding partners have **up to three months** from the date of publication to implement the arrangements. The implementation date should be made clear in the published arrangements. All new local arrangements must have been **implemented by 29 September 2019**.

Safeguarding partners

- The 3 safeguarding partners should agree on ways to co-ordinate their safeguarding services; act as a strategic leadership group in supporting and engaging others; and implement local and national learning including from serious child safeguarding incidents.
- To fulfil this role, the three safeguarding partners must set out how they will work together and with any relevant agencies.
- All 3 safeguarding partners have **equal and joint responsibility** for local safeguarding arrangements.
- It will be for local areas to decide what their arrangements should look like, how they will work in practice; and what **geographical area** they will cover

(although a local authority area cannot be covered by two sets of overlapping arrangements).

Funding

- Safeguarding partners and relevant agencies are responsible for funding their arrangements. While a set funding formula is not being prescribed, **funding contributions should be equitable and proportionate**. The guidance states: -

‘The safeguarding partners should agree the level of funding secured from each partner, which should be equitable and proportionate, and any contributions from each relevant agency, to support the local arrangements ‘

Independent Scrutiny

- Arrangements will be made available to the public through the publication of an **independently scrutinised plan**, which will set out in detail how safeguarding partners intend to work together. Safeguarding partners will also be responsible for publishing **reports at least once in every twelve-month period** which set out how effective their arrangements have been in practice
- Whilst the decision on how best to implement a robust system of **independent scrutiny** is to be made locally, safeguarding partners should ensure that the scrutiny is objective, acts as a constructive critical friend and promotes reflection to drive continuous improvement.
- The independent scrutineer should consider how effectively the arrangements are working for children and families as well as for practitioners, and how well the safeguarding partners are providing strong leadership and agree with the safeguarding partners how this will be reported.

Relevant agencies

Relevant agencies are those organisations and agencies whose involvement the safeguarding partners consider is required to safeguard and promote the welfare of local children. For local arrangements to be effective, they should engage organisations and agencies that can work in a collaborative way to provide targeted support to children and families as appropriate. The safeguarding partners must set out in their published arrangements which organisations and agencies they will be working with to safeguard and promote the welfare of children.

Schools, colleges and other educational providers

- All schools, colleges and other educational providers have duties in relation to safeguarding children and promoting their welfare.
- The safeguarding partners should make arrangements to allow all schools (including multi academy trusts), colleges and other educational providers, in the local area to be fully engaged, involved and included in the new safeguarding arrangements.
- It is expected that local safeguarding partners will name schools, colleges and other educational providers as relevant agencies.

- Once designated as a relevant agency, schools and colleges, and other educational providers, in the same way as other relevant agencies, are under a statutory duty to co-operate with the published arrangements

Child Safeguarding Practice Reviews

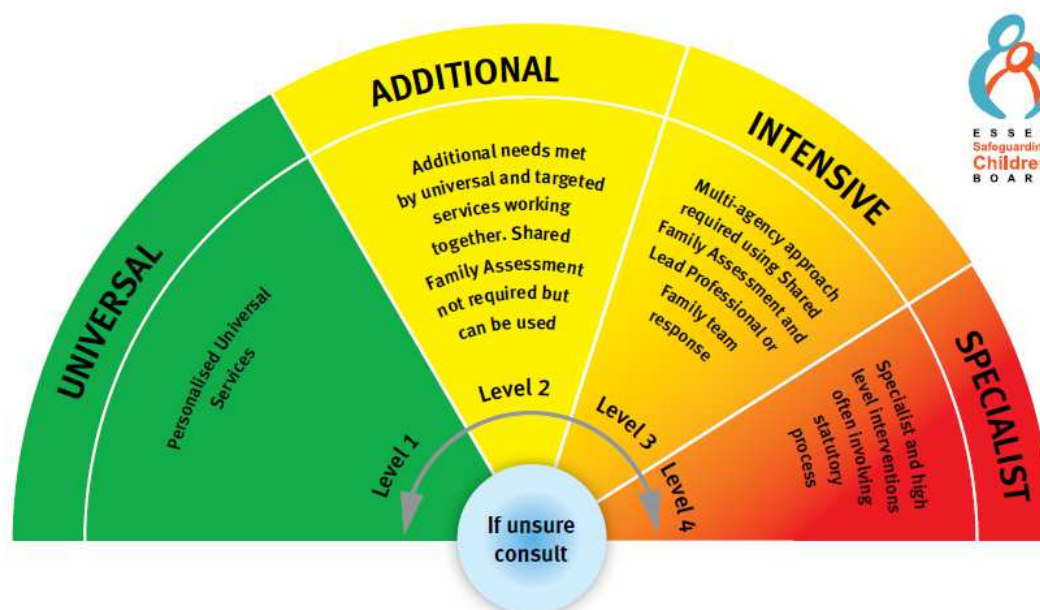
New national and local “Child Safeguarding Practice Review” procedures replace the existing Serious Case Reviews. The guidance sets out the process for new national and local reviews. The responsibility for how the system learns the lessons from serious child safeguarding incidents lies at a national level with the Child Safeguarding Practice Review Panel (the Panel) and at local level with the safeguarding partners.

Effective Support for Children and Families in Essex

The Effective Support for Children and Families in Essex is an Essex Safeguarding Children Board document that is agreed by all Board partners. All key agencies contribute to the content, it has been in its current format since 2013 following a review of assessment, referral and access to services that commenced in January 2012. It also incorporates the learning from the work of the Essex Family prototypes between 2011 and 2013.

The Effective Support for Children and Families in Essex guidance is for everyone who works with children and young people and their families in Essex. It is about the way we can all work together, share information, and put the child and their family at the centre, providing effective support to help them solve problems and find solutions at an early stage to prevent problems escalating. There may be times when the needs of the family are such that intensive or specialist statutory intervention is required.

The Effective Support Windscreen- The conceptual model and windscreen is a way of developing a shared understanding and explaining the Essex approach across all our services and partnerships, ensuring a consistent approach is applied by all practitioners and managers. The model illustrates how we will respond to the requirements of children and families across four levels of need (**Universal, Additional, Intensive and Specialist**).



All partners working with children, young people and their families will offer support as soon as we are aware of any additional needs. We will always seek to work together to provide support to children, young people and their families at the lowest level possible in accordance with their needs.

[More information on the Effective Support Windscreen \(Effective Support Portal\)Effective Support for children and Families in Essex Document](#)

Examples of 2 areas of work carried out since previous Scrutiny

Stay Safe Conferences

Following the review of governance arrangements in Essex, from April 2017 the Stay Safe groups became sub-committees of the ESCB; this established a formal link between the stay safe groups and ESCB, though they retained their links with the local Children's partnership.

ESCB decided that rather than holding one large central conference we would work with the stay safe groups to develop locally based conferences which were held in March 2018.

There was some variation in the content of the 7 conferences however all set out to achieve the following outcomes;

To provide an interactive event for those working with children and families locally to:

- Hear about key projects and new developments around safeguarding
- Support partnership and working together opportunities
- Inform stay safe priorities for 2018
- Go away with practical resources to support your work with children and families

The conferences were designed by a working group from the local Stay Safe group in each area, South Essex held just one conference but in all the other quadrants the working groups chose to hold 2 conferences at different locations to encourage people to see it as a local event and ensure access for a wide range of people. Key themes across all 7 conferences were;

- Gangs and Serious Youth Violence
- Team around the family and early help
- ECC Children & Families Hub online portal

All areas had input from Essex Youth Offending Service in relation to those young people who may be involved in gangs or at risk of becoming involved in gang related activity. Essex Youth Offending Service spoke about local support services for young people but also support for professionals supporting those young people.

Workshops were delivered by local practitioners and in West some parent volunteers delivered a workshop on their personal experience of being supported by Family Solutions and other organisations.

A total of 339 people attended the 7 events across the county, this is significantly more people than have previously attended the ESCB annual conference and these were well received.

Feedback from delegates;

- “Really enjoyed the youth offending service with regards to gangs. Really informative and useful information to take with me and share with my team” (*Essex Child and Family Wellbeing Service*)
- “Family solutions workshop-enjoyed the simplicity of the exercises but how powerful they were and how well they got the message across” (*Essex Child and Family Wellbeing Service*)
- “I found this event brought practitioners together and share ideas of how to approach working together. Good networking amongst attendees” (*Health*)
- “Found gang presentation useful/informative” (*Health & District/Borough Council*)
- “I do not work directly with families or children but I found this event useful and have come away with some great info and contacts” (*District/Borough Council*)
- “Professional networking throughout the event was excellent and worth attending for” (*Education*)
- “My knowledge has increased following today” (*Health*)
- “Having the parent’s perspective was brilliant, it is so much easier to understand, relate and empathise with first hand experiences” (*Education*)
- “Very informative and a good insight into how partner agencies can work together to achieve positive outcomes” (*Police*)
- “I found these workshops the best part of the day, coming together and sharing ideas etc.” (*Voluntary Organisation*)
- “Really informative and useful information to take with me and share with my team” (*Essex Child and Family Wellbeing Service*)

Thematic review of teenage suicide in Essex

A thematic review of teenage suicides was carried out by a multi-agency review panel in January 2018. The review focused specifically on the nine young people in Essex who killed themselves between April and November 2017. Eight of these young people were aged between 13 and 17. One young person who was 18 was included in the review because, although they did not formally come under the Child Death Review process, they were still at school at the time of their death.

Following the review, subsequent report and learning event for strategic leads held in June 2018, a project is now underway within each of the Stay Safe Groups to work further on the prevention of teenage suicide.

Each of the Stay Safe Groups will receive a presentation on the findings of the thematic review and the recommendations in their September meeting. Each Stay Safe Group will then design an event in the new year to share the learning from the review and to identify key local priorities that they would want to focus on.

ESCB will set the part of the programme for the Stay Safe conferences in the new year to ensure that there is a consistent message across the county, the rest of the programme will be determined locally.

Suicide prevention- ESCB and ESAB learning and development sub-committee are working with Public Health to support the development of an all age suicide prevention training programme.

ESCB are working with public health and other organisations to raise awareness of suicide including promoting World Suicide Prevention day on 10 September, this is an annual awareness day.



Annual Report 2017-18

Author: Alison Cutler, ESCB Business Manager
Independent Chair: Phil Picton

Contents

Foreword from Phil Picton, ESCB Independent Chair	3
Foreword from Alison Cutler, Business Manager, ESCB	5
Introduction	6
Essex Overview – Local Context	6
The Board	8
Statutory Duties	8
ESCB Structure	8
Governance Review	10
Future Statutory Arrangements	11
ESCB Strategic Priorities – what we did in 2017-18	11
Strategic Priority 1: The Local Safeguarding Context	12
Strategic Priority 2: Early Help and Early Intervention	19
Strategic Priority 3: Emotional Health and Wellbeing	21
Strategic Priority 4: Strong Leadership and Strong Partnership	23
Summary and Next Steps	27
Glossary	28
Appendices	29



Foreword from Phil Picton

This report is a summary of Essex Safeguarding Children Board's progress through its multi-agency work in 2017-18. In an area the size of Essex, it is the efforts of many organisations and thousands of professionals and volunteers which keep children safe. The Board ensures that processes are coordinated and it challenges and supports organisations and leaders when necessary.

As you will read in the following pages, the Board's remit is very wide as the factors which put children at risk can arise within families, in communities and through the internet. As a result, each year the Board's leaders prioritise where to put their effort. This report sets out the priorities and achievements for 2017-18.

At the heart of safeguarding work is the role of Essex County Council, Essex Police and NHS organisations including hospitals, mental health services and local doctors. Generally, these partners carry out their safeguarding responsibilities very effectively with high levels of commitment from staff and a willingness to improve.

The County Council's Children's Services have continued to build on their past successes in safeguarding and the policing approach is now much more effective at protecting children as a result of the intensive improvement programme which Essex Police has followed over the past two years. Whilst NHS leaders are equally committed to safeguarding, structural and management change in the Health sector remains a threat. The level and nature of the current changes can disrupt multi-agency links and increase the chances of information about children not being effectively shared. NHS leaders are countering this risk where possible but safeguarding will only become more resilient when the current change programme is fully implemented and leaders are able to bring stability to the system.

In addition to the three core partners, operational safeguarding also relies upon others, such as schools, voluntary groups, probation services and local councils, to effectively share information. There are many examples of this network of professionals providing excellent protection to children and support for families. Particularly pleasing is the willingness of staff in all organisations to be open and keen to learn when children are harmed and the Board's learning and development approach is increasingly using learning from such cases to raise awareness generally.

Foreword from Phil Picton

Following the publication of the new legal framework for multi-agency safeguarding (Working Together 2018) the Board will need to develop its governance and approaches in the coming months. It has already decided to work more closely with safeguarding partners in Southend and Thurrock. This is welcomed, as it should strengthen safeguarding by making processes easier for professionals who work across all three authorities and enabling more effective support for children who receive services from more than one of the areas.

The Board relies heavily on the work of its Business Manager, Alison Cutler, and her team to make progress. Their efforts and competence are very much appreciated by all involved in this multi-agency work and I would like to thank them personally for all the support they offer me.

A handwritten signature in black ink, appearing to read 'Phil Picton', with a stylized flourish underneath.

Phil Picton
ESCB Independent Chair

Foreword from Alison Cutler

This year has been one of continued development of the Board and reviewing our effectiveness. The Board restructure along with the development of a strategic Executive, streamlined Sub-Committees and greater links across to other Boards has helped us to focus our efforts on tackling issues and areas of concern. The biggest change has been the local Stay Safe Groups across each quadrant of Essex moving under the governance of the ESCB. This has linked local and strategic priorities in a much more effective way, enabling front line staff to address multi-agency issues that have been highlighted as a concern, with the support of the Board.

This report focuses on the progress of the Board in addressing safeguarding issues in 2017-18 as measured against its strategic priorities. The report highlights some of the work over the past year as well as challenges going forward.

As always, I would like to thank partners for their support and in particular make mention of the ESCB Business Support Team who have worked so hard with dedication and professionalism to ensure that the Board runs smoothly.

A Cutler

Alison Cutler
Business Manager ESCB



Introduction

This annual report for the Essex Safeguarding Children Board (ESCB) reviews the work of the Board for the period of April 2017 – March 2018. It does not cover every piece of work carried out by the Board, but instead discusses the impact of the work of the Board in key areas identified in the Business Plan (see [Appendix B](#)), the challenges it has faced over the year and its plans moving forward.

The report includes contributions from partner agencies and has been approved by Board Members.

Essex Overview - Local Context

Essex is a very varied county, comprising both rural and urban areas, and a long coastline. The new towns of Basildon and Harlow contrast with rural villages and coastal towns. Essex has both areas of great affluence and great deprivation, with pockets of high social and economic need, even within otherwise thriving localities.

Is safeguarding a significant issue in Essex?

The vast majority of the 309,000 children in Essex led healthy, safe lives in 2017-18, but a small minority faced challenges in their life and family circumstances which puts their wellbeing and safety at considerable risk. For example:

- 9,145 children were referred to Children's Services during the year because someone had a concern about a risk of abuse or neglect. Police (27%), schools (17%) and their own family members (8%) were most notable in making these contacts. 87% of these cases (over 7,900) were felt to need a Child and Family Assessment by Children's Services. While the proportion of referrals progressing to assessment has remained relatively stable over the last two years, the volume of referrals is at its lowest level since pre-2012 and follows the downwards trend seen in Essex for the last three years. This is against the trend seen by our statistical neighbours and nationally, which saw numbers starting to rise again in 2016-17.

Essex Overview - Local Context

- Investigations of child exploitation involved 166 Essex children with 72 of these being considered as high risk. Since October 2017 the numbers of children identified as at risk has remained stable, following a 60% increase between April 17 and Sept 17. It is believed that this increase occurred due to a change in the way Children & Families record 'child exploitation risk' with the introduction of recording children at risk of criminal exploitation as well as sexual exploitation. This acknowledges a growing threat locally and nationally in respect of children exploited by gangs and County Lines.
- All children are vulnerable to exploitation and harm when they go missing from home, but some children are identified as at risk of exploitation and harm during their missing episode. Across the year 552 children were reported missing – 33% of them were 'looked after children', equating to 14% of all children in care during the year. This is a slight increase from the volume seen in 2016-17 (547 missing, 35% looked after: 13% of all children in care) and above the national average of 10% (2016-17). 132 children had a noted risk of exploitation during their missing episode (24%).

“The vast majority of the 309,000 children in Essex led healthy, safe lives in 2017-18, but a small minority faced challenges in their life and family circumstances which puts their wellbeing and safety at considerable risk.”

- National estimates show 1 in every 5 children is exposed to domestic abuse by the age of 18. Essex Police recorded over 13,000 domestic abuse crimes in the year, many involved children as witnesses or in the household at the time of abuse. As per the national picture, this is a further increase in the annual volume of domestic abuse crimes recorded, which has been increasing for the last four years due to the work being undertaken to increase the number of victims who disclose abuse to services. While volumes are increasing, the proportion of Domestic Abuse crimes as a percentage of all crimes is equal to the overall picture across England and Wales at 11% (2016-17).
- Family issues significantly add to the levels of stress and anxiety for children, affecting their mental wellbeing. 25% of Essex Police have children under 5 in a household where family members have self-diagnosed with depression or stress.

The Board

Statutory Duties

The Board exists as a statutory body and has a range of roles including reviewing child deaths, undertaking serious case reviews, developing policies, procedures and scrutinising and challenging local safeguarding practice, taking into account the local challenges.

Section 14 of the Children Act 2004 sets out the objectives for the Local Safeguarding Children Board (LSCB) as:

- To coordinate what is done by each person or body represented on the Board for the purposes of safeguarding and promoting the welfare of children in the area and;
- To ensure the effectiveness of what is done by each such person or body for these purposes.

ESCB Structure

The role of the Safeguarding Children Board is to have an independent coordinating and challenge role around safeguarding practice across its partner agencies. This is in part carried out by the Sub-Committees of the ESCB, which are:

- **Child Death Overview Panel (statutory)**
- **Serious Case Review (statutory)**
- **Learning and Development (joint with Adults Board)**
- **Communications (virtual - joint with Adults Board)**
- **Performance, Audit and Quality Assurance**
- **Policies and Procedures**
- **Child Exploitation and Missing**

The Board also has links with two other partner forums, Health Executive Forum and City, District, and Borough (CDB) Councils Group, where leaders meet to discuss safeguarding issues.



The Board

a) Health Executive Forum

At a strategic level, the co-ordination of the safeguarding responsibilities for the large number of health organisations in Essex is achieved through the Health Executive Forum (HEF). This meets six times per year and brings together all the health agency executive safeguarding children and adult leads from across Essex, which since early 2016 has included representatives from NHS Southend and NHS Thurrock Clinical Commissioning Groups (CCGs).

The HEF provides a forum to take forward initiatives to support the safeguarding agenda in Essex and, led by the Accountable Officer, Castle Point & Rochford CCG, is the key health leadership forum for safeguarding in Essex. Selected HEF members also sit on the ESCB and the Essex Safeguarding Adults Board (ESAB).

b) City, District and Borough (CDB) Councils Group

This group is formed of safeguarding leads from each of the local councils in Essex and meets quarterly to discuss safeguarding issues for both Adults and Children and share good practice. Its areas of work are closely aligned to that of the strategic priorities of the Adult and Children's Boards.

ESCB Stay Safe Groups

Locally, Stay Safe Groups across each quadrant moved under governance of the ESCB this year in order to strengthen the links between strategic and local safeguarding. This has allowed a two-way flow of information from the groups to the Board, allowing those working locally to tackle areas of concern with the full support of the ESCB.

Stay Safe Groups are made up of a wide range of designated and named professionals or managers with safeguarding responsibilities including 0-19 services, schools, acute and primary health providers, local council representatives, voluntary sector, etc. The Board is not prescriptive about who leads or attends the group other than expecting that managers from the key statutory agencies (police, social care and health managers) actively participate and encourage involvement.

The Stay Safe Groups focus on improving local outcomes as well as highlighting potential 'bigger' issues/risks to the ESCB Executive Board.

The Board

Governance Review

The ESCB undertook a governance review following publication of the [Children and Social Work Act](#) which received Royal Assent in May 2017.

The Act removes the LSCB statutory framework, replacing it with new requirements for specific partners to establish multi-agency safeguarding arrangements from 2019. Supporting regulations and “Working Together 2018” statutory guidance are anticipated in June 2018.

The ESCB agreed that the Board should be reviewed to ensure that it continues to provide effective multi-agency arrangements and to be prepared for when the new statutory guidance is published. The focus of this review was to ensure that there is an effective linkage between local and strategic work and have a structure in place that enables progress to be made in tackling key areas of concern.

The revised structure of the Board including its Sub-Committees can be accessed in [Appendix A](#) and attendance of Board Members can be found in [Appendix C](#).

The governance review was designed to:

1) Replace the existing Board structure with a ‘bottom up’ approach based on:

- a. Quadrant Based Stay Safe Groups becoming part of the ESCB and driving the ESCB agenda**
- b. Involving a broader range of safeguarding partners meeting in an ESCB Assembly**
- c. An ESCB Strategic Executive accountable to the Assembly and partner forums/ groups**
- d. ESCB Sub-Committees and Task and Finish Groups accountable to the Executive**

2) Ensure the function of the Board enables greater accountability of executive members focussing on understanding and tackling risks and utilising opportunities to promote and develop safeguarding practice.

The Board

Future Statutory Arrangements

The new Working Together guidance arising from the Children and Social Work Act will be published during 2018. It is proposed all new arrangements will be in place by September 2019. The ESCB will be working with partners as well as Southend and Thurrock Boards over the coming year to review current arrangements and plan for any changes.

ESCB Strategic Priorities – what we did in 2017-18

The ESCB Business Plan focussed on four key strategic priorities for 2017–18:

- The Local Safeguarding Context - The ESCB and partner agencies prioritise improvement in areas and on issues of greatest risk and concern to safeguarding
- Early Help and Early Intervention
- Emotional Health and Wellbeing
- Strong Leadership and Strong Partnership

These priorities were agreed by the Board based on key areas of work arising from feedback about local practice, learning from case reviews, and national priorities. Subsequently much work has been done during the year at all levels by the Board, partner agencies, the local Stay Safe groups and the ESCB Sub-Committees and achieved with a standstill budget. The details of the budget can be accessed at [Appendix D](#).

Page 37 of 62

The following section outlines the progress that has been made across these strategic priorities over the year.

Strategic Priority 1: The Local Safeguarding Context

The ESCB worked on a number of areas under this priority over the year. In particular child sexual abuse and exploitation remained an area of concern. Other areas of focus included working with other Boards on issues affecting families, such as domestic abuse and building capacity across local councils to deal with safeguarding concerns.

Online Child Sexual Abuse (CSA) campaign

The 'I Didn't Know' Child Sexual Exploitation (CSE) campaign was initially set up in 2016 to provide the community with knowledge and understanding of CSE and raise awareness across the wider Essex area. For the 2018 National CSE Awareness Day a campaign was developed alongside Essex Police, to focus on online child sexual abuse.

The threat of abuse is a serious one, online abuse is present in over 60% of investigations across Essex in respect of CSE. The campaign aimed to:

- raise awareness of privacy settings on apps,
- provide tips and advice regarding online safety,
- provide advice to parents on what to do if they have concerns,
- provide advice to children on what to do if they are worried about something they have seen or been asked to do online.

I DIDN'T KNOW

....that my daughter was sharing inappropriate images on Snapchat

Take steps to make your child's social media secure by visiting:
essex.police.uk/onlineCSE

Page 38 of 62

ESSEX POLICE
Protecting and serving Essex

ESSEX Safeguarding Children BOARD

LSCB

Strategic Priority 1: The Local Safeguarding Context

Resources created as part of the campaign included parent case studies, graphics and quotes, links for information and support, resources to use with children and young people (aged 8–13 years) and resources for parents. Essex Police and the ESCB also ran a social media campaign which reached over 500,000 people. The week of campaign activity saw a total of 7,099 visitors to the ESCB website, almost double the usual hits and the [campaign webpage](#) itself received 1913 hits - over 25% of the total traffic to the website. The campaign made some local and regional press coverage and the Snapchat stories by Essex Police were viewed by young people across Essex with screenshots taken of how to access support.



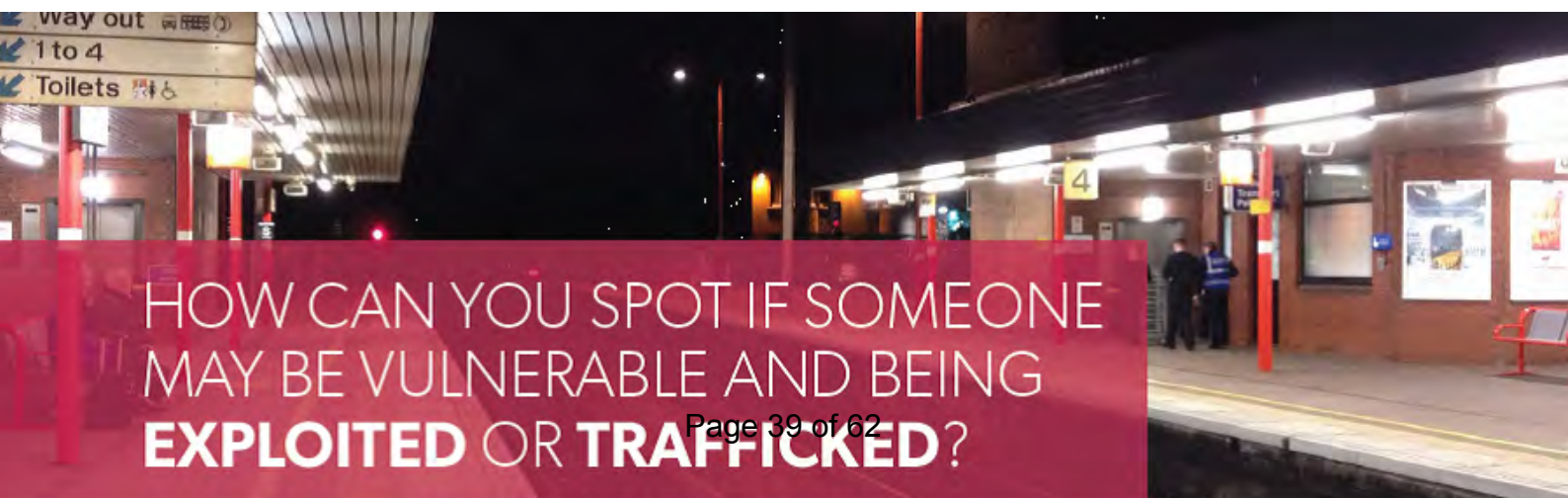
Essex Police and the ESCB also ran a social media campaign which reached over 500,000 people.



Operation Henderson CSE Campaign

The ESCB coordinated a multi-agency pilot project focusing on child exploitation across Essex railway networks, which local district and borough councils supported within their areas. There were two weeks of targeted activities from 29th January-11th February 2018. Prior to the two weeks, a new role for station staff of Child Exploitation and Trafficking Transport Network Advisors was created.

Operation Henderson covered Epping Forest, Braintree and Basildon incorporating all stations within these areas, with the aim to raise awareness and identification of child exploitation and trafficking with rail staff, rail retail outlets, businesses close to stations and the public.



Strategic Priority 1: The Local Safeguarding Context

As part of the social media campaign, three videos were created each targeted to a different audience; commuters, children and young people, and railway staff. The campaign was covered in local media outlets including a radio interview on BBC Essex. There was an [Operation Henderson webpage](#) set up as part of the ESCB website which received 334 views during the two weeks. The ESCB website overall received 1137 viewings during the targeted two week campaign. Social media reach was more than 290,000 and almost 200 more people liked the ESCB Facebook page during the two week campaign period bringing our total followers to 735. The videos were watched more than 27,000 times with the community video being the most watched with more than 12,000 views during the campaign period. The young person video got almost 9000 views and the worker video almost 6000 views.

Raising Awareness to the public and young people

95,534 People reached Online	78,000 homes reached
Radio Listeners of BBC Essex Drive Time	27,000 video views
1,137 hits on the ESCB website	292,500 people reached through Social Media in Total
590 people engaged by Outreach Workers	
334 conversations/contacts with the public	



Feedback to outreach workers included:

“Good to see you here, even if just one person texts it could save someone” (Public)

“As a small local business they felt able to play an important part in addressing issues around exploitation” (Outreach worker speaking to local business)

“The videos were watched more than 27,000 times with the community video being the most watched with more than 12,000 views during the campaign period. The young person video got almost 9000 views and the worker video almost 6000 views.”

Strategic Priority 1: The Local Safeguarding Context

Child Sexual Exploitation (CSE) schools and workforce survey

The CSE schools survey in 2018 helped gain a real understanding of young people's awareness of CSE and online safety, 1,875 pupils (753 Year 6 and 1,122 Year 8 pupils) took part in the survey. Views have been aggregated, reported and shared across schools, through Missing and Child Exploitation meetings and the ESCB Child Exploitation and Missing Sub-Committee to inform future action plans. Quarterly ESCB CSE blogs and bulletins have provided a mechanism for distributing learning from these surveys, such as the need to promote the use of Key Stage 2 and Key Stage 3 CSE learning resources within schools and are made available via the ESCB website.

A priority of the ESCB Child Exploitation and Missing Sub-Committee during 2017–18 was to capture the views of others and use this to inform practice, training and development opportunities and future strategic plans. A whole workforce survey was delivered in 2017 which was complemented by a number of Social Work Forums to capture an understanding of the workforce confidence in identification, response, service delivery and intervention.

Following on from this survey and a learning and development review of CSE training across Essex organisations, a set of Learning and Development Standards were created for organisations to adopt and an advanced level training course on CSE has been commissioned via the NWG CSE Response Unit for 2018-19. The survey has also influenced the direction and delivery of CSE Champion Forums topics, such as 'Working with Parents as secondary victims' and 'Working with Children and Young People at risk of CSE' to provide specialist insight on areas where greater confidence was required. The Working with Children and Young People session was jointly delivered by the ECC Involvement Service and a group of young people, which enabled clearer and more direct messages from the young people themselves – specifically about the use of language and the consequence of 'judgements'.



The survey has also influenced the direction and delivery of CSE Champion Forums topics, such as 'Working with Parents as secondary victims' and 'Working with Children and Young People at risk of CSE' to provide specialist insight on areas where greater confidence was required.



Strategic Priority 1: The Local Safeguarding Context

Child Sexual Exploitation (CSE) schools and workforce survey

The CSE Champions role across Southend, Essex and Thurrock (SET) was reviewed during 2016 with a refreshed look at how to ensure the quality of the role. The workforce survey outlined how valued the CSE Champion role was by the workforce so throughout 2017-18 a new set of standards have been implemented for CSE Champions to achieve prior to adopting this role, this includes the need for all Champions to have completed an online course around the SET CSE Toolbox and risk assessment. Champions are now up to date and are expected to attend at least one forum a year to ensure that they are up to date with relevant and specialist topics. There are over 300 CSE Champions across a range of statutory, private and voluntary organisations within Essex alone. This will help agencies to further support those children and young people at risk of exploitation.



There are over
300 CSE
Champions
across a range
of statutory,
private and
voluntary
organisations
within Essex
alone.



Strategic Priority 1: The Local Safeguarding Context

SET Memorandum of Understanding (MOU) – Foster Carers, Children’s Homes / Sub-Committee expansion

The SET CSE Strategic Group has led on the creation, implementation and delivery of the Memorandum of Understanding (MOU) and planning for missing to enable early planning for children who go missing from care, and those deemed at risk of exploitation. The MOU and planning for missing has been rolled out across SET during 2017 and is now under review to establish the impact of this work. The SET CSE Strategic Group met with key care home providers, including Semi-Independent Accommodations to discuss the implementation of the MOU and identify any early challenges with this.

The work of the ESCB Child Exploitation and Missing Sub-Committee saw a shift in early 2017 with a need to focus more broadly on threats of exploitation to children and young people. This is due to a developing understanding of criminal exploitation including the threat from gang association and County Lines. This shift has been influenced from a greater understanding of what is known about how children are exploited within Essex through understanding issues affecting frontline services, hearing the views of families and challenges for frontline practitioners, and through the role of the Missing and Child Exploitation (MACE) meetings in overseeing and tackling local threats. A bi-annual report is provided to the Sub-Committee and this has identified that throughout 2017-18 information sharing across partners and an understanding of criminal exploitation has improved, with greater focus on methods of exploitation (such as cuckooing, debt bondage, and coercion of drug supply).



Strategic Priority 1: The Local Safeguarding Context

SET Child Protection procedures

The ESCB works in collaboration with Southend and Thurrock Safeguarding Boards to produce and update the SET Child Protection procedures to comply with legislative and statutory guidance, as well as key learning from local and national case reviews as required.

This year the main updates were around Child Sexual Exploitation, and the publication of the SET Police Protection protocol and Presentation of Concealed, Denied or Late Booking in Pregnancy.

Working with the other Boards to identify cross-cutting issues

The ESCB supported the Southend, Essex and Thurrock (SET) Domestic Abuse Board with organising the Domestic Abuse Conference in November 2017, which 168 people attended from a wide range of agencies. Feedback was very positive 92% rated their overall experience of the conference as good, very good or excellent and 96% felt the aims of the conference were met. Such events enable those working with families to better understand the impact of domestic abuse on children and young people and thus better support those experiencing domestic abuse in the family. The ESCB is planning joint learning events in the coming year with the SET Domestic Abuse Board as well as the Essex Safeguarding Adult Board, in order to build on cross cutting issues and further embed learning arising from case reviews across all three Boards. This will help to develop a greater awareness of the importance of taking a holistic view of the family when safeguarding children and young people.

Team Around the Family (TAF)

The local Stay Safe conferences which ran in 2017 all included a workshop that focussed on Team Around the Family, again highlighting the need for agencies to work with the family as a whole.



The ESCB is planning joint learning events in the coming year with the SET Domestic Abuse Board as well as the Essex Safeguarding Adult Board, in order to build on cross cutting issues and further embed learning arising from case reviews across all three Boards.

Page 44 of 62



Strategic Priority 2: Early Help and Early Intervention

Building knowledge and capacity across local councils

Local e-learning training to develop awareness of safeguarding - The 12 City, District and Borough (CDB) members developed bespoke e-learning packages for their own authorities and worked with the ESCB Learning and Development Manager to produce an Enhanced Training programme, which they have also adapted to suit their respective areas. This enables staff locally to gain a fuller understanding of safeguarding and thus be better equipped to support children, young people and their families and know who and where to refer any safeguarding concerns.

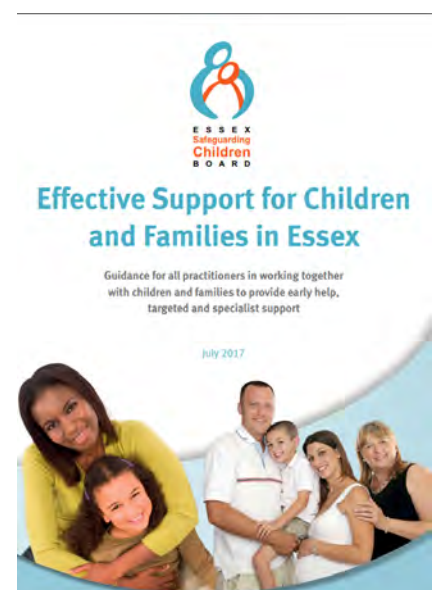
Appointment of new Safeguarding Officers within Local Authorities - Through the advocacy of the CDB group three Local Authorities in Essex recruited to new safeguarding roles within their organisations. This will enable local councils to be able to effectively respond locally to safeguarding concerns. The ESCB continues to highlight the importance of early intervention and early help across agencies, including raising awareness of the Effective Support for Children and Families document, and learning from serious case reviews (and other types of reviews).

The learning from these case reviews was shared through a series of multi-agency practice workshops across the County and a [learning briefing](#) was published.

Effective Support document and briefing sessions

The [Effective Support for Children and Families document](#) was updated to reflect current practice and re-launched in July 2017. Four launch events were held across the county, supported by the Stay Safe groups, and 158 front line staff across various agencies attended - the highest number of attendees were from Education (39%).

Evaluations were completed by 121 attendees and a large number had increased their confidence in understanding the importance of recording consent, why it is required and in relation to the use of early help plans. This will help support staff in understanding how to intervene in families at an early stage to improve outcomes for children and young people.



Strategic Priority 2: Early Help and Early Intervention

Impact of the work of the Child Death Overview Panel (CDOP) to reduce Sudden Unexplained Deaths of Infants (SUDIs)

Between 2014-16 there was a rise in the number of sudden unexplained deaths of infants where co-sleeping or sleep surface was noted as a modifiable factor in Essex and Thurrock.

Apr 2014 to Mar 2015 – 10 deaths
Apr 2015 to Mar 2016 – 9 deaths
Apr 2016 to Mar 2017 – 12 deaths

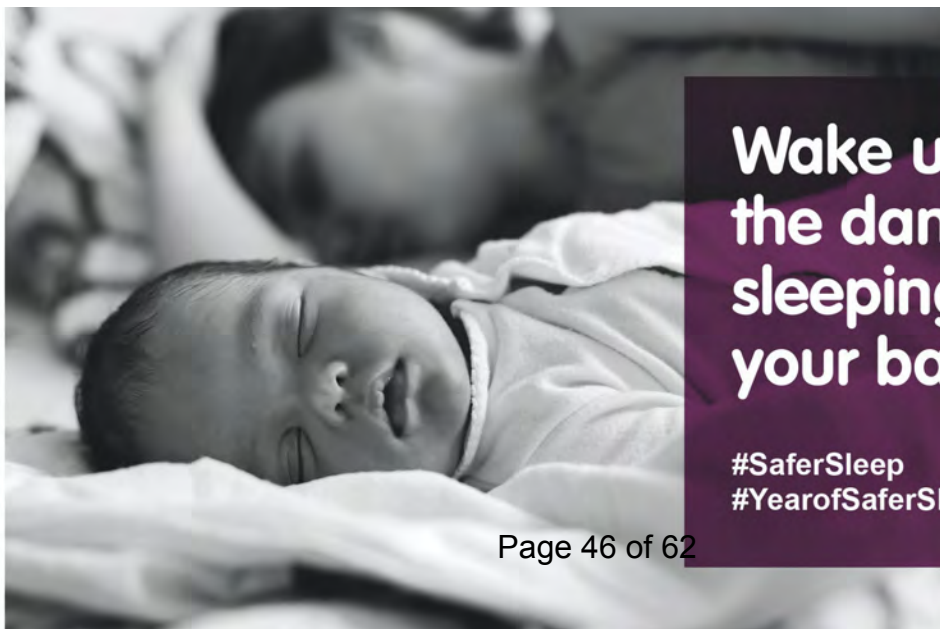


The impact of this high level campaign has been considerable. The number of notifications of SUDI deaths where co-sleeping or sleep surface was a factor fell in the year 2017-18 to four cases. There have been no SUDI deaths in SET areas in the year 2018-19 to date.



As a result, the Strategic Child Death Overview Panel (SCDOP) launched a Safer Sleeping campaign which ran for a fortnight between 12th-23rd June 2017. A series of campaign posters were designed to provide more emotive impact and also included specific targeting of fathers. The campaign focused on social media promotion to increase public reach. During the campaign period there were 770 webpage views, a substantial increase on what would normally be expected on that page.

The impact of this high level campaign has been considerable. The number of notifications of SUDI deaths where co-sleeping or sleep surface was a factor fell in the year 2017-18 to four cases. There have been no SUDI deaths in SET areas in the year 2018-19 to date.



**Wake up to
the dangers of
sleeping with
your baby...**

#SaferSleep
#YearofSaferSleep

Strategic Priority 3: Emotional Health and Wellbeing

Thematic review of teenage suicides

Following a rise in the number of teenage suicides in Essex in 2017, the Strategic Child Death Overview Panel requested a Thematic Review be undertaken. The review considered eight cases of young people aged 13 to 17 years and one case of a young person who was just over 18 years but still in full-time education. The learning from this review once completed, will be shared widely including via a conference for strategic leads as well as to local areas via the Stay Safe Groups – this will take place over the summer of 2018. This review will also inform further work aimed at supporting the wellbeing of young people. The ESCB as part of this work has refreshed its [schools toolkit on suicide prevention](#) in order to support schools in their work to promote emotional wellbeing. This is further supported by a [wellbeing website](#). The ESCB continues to work with partners in promoting the wellbeing of young people by promoting useful websites and organisations.



The ESCB as part of this work has refreshed its schools toolkit on suicide prevention in order to support schools in their work to promote emotional wellbeing. This is further supported by a wellbeing website.



Communication activities around Emotional Wellbeing and Mental Health

An [Emotional Wellbeing and Mental Health page](#) has been set up on the ESCB website, which includes information on the Emotional Wellbeing and Mental Health Information Portal for Schools, online counselling services such as [Kooth](#), [Big White Wall](#) and various signposting resources.

Social media posts around Kooth and Big White Wall always perform highly, showing a need for this information locally. December in particular saw a large increase in activity around the posts about Kooth online counselling service and Big White Wall. The Facebook post in particular reached more than 22,000 people.

These statistics have shown potential for future campaign work, which will be developed in 2018-19 to coincide with National Suicide Prevention Day.

Strategic Priority 3: Emotional Health and Wellbeing



Social media posts around Kooth and Big White Wall always perform highly, showing a need for this information locally. December in particular saw a large increase in activity around the posts about Kooth online counselling service and Big White Wall. The Facebook post in particular reached more than 22,000 people.



Monitoring the Emotional Wellbeing and Mental Health Services

The Health Executive Forum has monitored the Emotional Wellbeing and Mental Health Services for Children and Young People to ensure effective arrangements for the delivery of the service and support the agenda to reduce self-harm and prevent suicide. Health leads have contributed to the Essex thematic review of suicides to have a better understanding in respect of vulnerability, stress factors, indicators of risk and whether anything could have been done differently which may have helped prevent such tragic outcomes. Work will continue during 2018-19 to reduce child deaths through suicide. Challenges remain about how best to support children and young people when there is increased pressure on mental health services nationally for young people.

Strategic Priority 4: Strong Leadership and Strong Partnership

It is important that the ESCB leads the safeguarding agenda, challenges the safeguarding work of partner organisations, and commits to an approach that learns lessons, embeds good practice and is continually influenced by children, young people and their families.

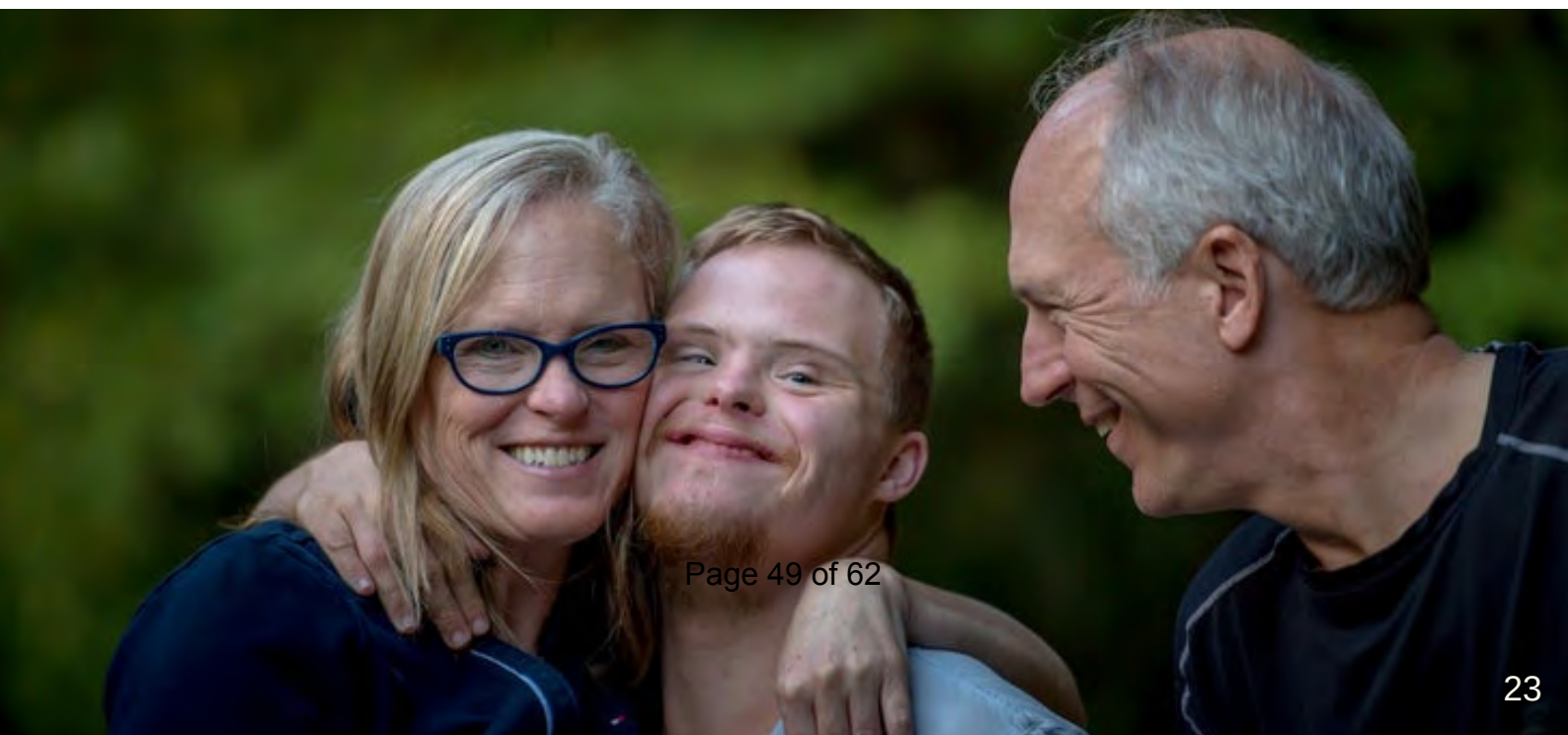
As such, we continue to involve young people and their families in developing resources, learning where we might need to focus efforts in improving services and ensuring we speak to families to obtain their views when we are reviewing cases. For example:

Involvement of Young People in CSE campaigns

The development of the I Didn't Know campaign was routed from the film created by the Children In Care Council in 2016, further developments of this campaign have been supported through the participation of children and young people in the language and graphics used.

Voice of families – workshops in West Essex

Three families who worked with the Family Solutions Team volunteered to present their stories to front line staff in West Essex about their positive experiences of being supported by services that had enabled them to make positive sustained changes in their lives. They delivered six workshops in total in West Essex which were well received by those attending.



Strategic Priority 4: Strong Leadership and Strong Partnership

Safeguarding children with disabilities training

The ESCB has been supporting the delivery of a strengths based approach to child protection conferences and core groups for children with disabilities as it had been identified that there was a lower than expected number of children with disabilities subject to a child protection plan. In addition, the ESCB have commissioned a local organisation to pilot two half day courses on safeguarding children with disabilities, this course focusses on the early identification of need and supporting families. These courses will be delivered in 2018-19.

Regional and national work

The ESCB also assists in supporting other areas for example the ESCB Business Manager is the chair of the Regional Business Managers Group, looking at areas where the LSCBs might work together to develop regional solutions to issues of concern, such as the mental health of young people. The ESCB Child Exploitation Project Manager is an Advisory Board Member for the national Centre of Expertise on Child Sexual Abuse/Exploitation, representing the Association of Directors of Children's Services (ADCS). This involves attending Advisory Board Meetings quarterly and advising and supporting as required, including linking with ADCS where relevant topics of interest are highlighted.



Three family solution volunteers presented their stories and the positive experience they had of being supported by services that enabled them to make positive sustained changes in their lives.



Strategic Priority 4: Strong Leadership and Strong Partnership

Improvement work – supporting other LSCBs

The Southend, Essex and Thurrock Strategic Child Death Overview Panel has received requests to share its Child Death Review and Rapid Response processes with other LSCBs as examples of good practice.

The ESCB Child Exploitation Project Manager has undertaken diagnostic work within LSCB and Children's Social Care settings in other Local Authorities to review their work in relation to children missing and children at risk of CSE. This has included working with Somerset LSCB, Birmingham Children's Social Care and Gloucestershire, providing recommendations for addressing challenges and areas of risk, and highlighting areas of good practice. The Business Manager has also supported these LSCBs in areas such as learning and development and business planning and improvement.

Child Death Overview Panel (CDOP) dissemination of learning

Learning from completed Child Death Reviews during 2017 has been shared across Southend, Essex and Thurrock (SET) areas in relation to the following topics:-

- Recognition of sepsis
- Post-operative cardiac death
- Maternal congenital infection
- Issuing of Death Certificate without Post Mortem

The aim of this sharing of learning is to help prevent deaths in the future.

Co-operation with other Child Death Overview Panel areas

In the event of a child normally resident in another area dying in Essex, the Strategic Child Death Overview Panel works closely with the area where the child was resident (who would have responsibility to carry out the Child Death Review). For example, in the case of a child who died within Essex following an accident on a bouncy castle in 2016. Learning from the review will be shared with SET SCDOP.

Strategic Priority 4: Strong Leadership and Strong Partnership

Developing new ways of working

The ESCB constantly strive to improve the way that partners work together, for example Stay Safe groups are trialling forums where Health and Social Care professionals come together to discuss practice issues and concerns where professional opinions differ around particular cases in order to find solutions.

Communication activities to raise awareness of safeguarding

Regular communications activities continue to raise awareness of safeguarding and the work of the Board, including having a presence at various events such as the SET Domestic Abuse Conference and Stay Safe events.

There has been an average of 15,700 total hits to the ESCB website each month, 250 new Twitter followers with 1700 reached by the end of 2017-18 and Facebook followers have doubled in the last year to more than 800, largely due to the success of recent CSE campaigns. ESCB Bulletins continue to run, with training and CSE taking a lead in recent months. Due to General Data Protection Regulation (GDPR) a number of subscribers were lost so a challenge for 2018-19 will be to build our list of subscribers.

Engagement with the voluntary sector

There is a recognition that the ESCB needs to continue to build links with the voluntary sector.

However, 47% of attendees at the ESCB multi-agency level 2 safeguarding course are from the voluntary sector, showing good engagement. The ESCB Practice Development Manager attends the Essex Council for Voluntary Youth Services cluster meetings which are run quarterly and also presented a workshop at the Essex Council for Voluntary Youth Services conference in Oct 2017. The Essex Council for Voluntary Youth Services representative is also helping the Board with plans for the changes under the Children and Social Care Act as we recognise the vital role the sector plays in supporting children, young people and their families.

Summary and Next Steps

This report has set out some of the many activities that the ESCB has been engaged in over the year and the impact of these. There remains as always more to do and this is a challenge given limited resources, organisational restructures amongst partner agencies and the future changes to multi-agency safeguarding arrangements and the impact of this on Essex. We will however, look to build on progress made this year as we move forward to develop our new arrangements in line with the new legislation – this will certainly include working even more closely with other Boards across Southend and Thurrock as well as more widely across the Eastern region. Some areas of work will continue to require a robust multi-partnership focus. This will include the emotional wellbeing and mental health of children and young people, tackling all forms of child exploitation, the impact of gangs and neglect – these will remain priorities for the Board in 2018-19.



Glossary

ESCB - Essex Safeguarding Children Board

ESAB – Essex Safeguarding Adult Board

HEF – Health Executive Forum

CDB – City, District and Borough Group

CDOP / SCDOP – Child Death Overview Panel / Strategic Child Death Overview Panel

CDR – Child Death Review

SCR – Serious Case Review

PAQA – Performance, Audit and Quality Assurance

CCG – Clinical Commissioning Group

MACE – Missing and Child Exploitation

LSCB – Local Safeguarding Children Board

CSE / CE – Child Sexual Exploitation / Child Exploitation

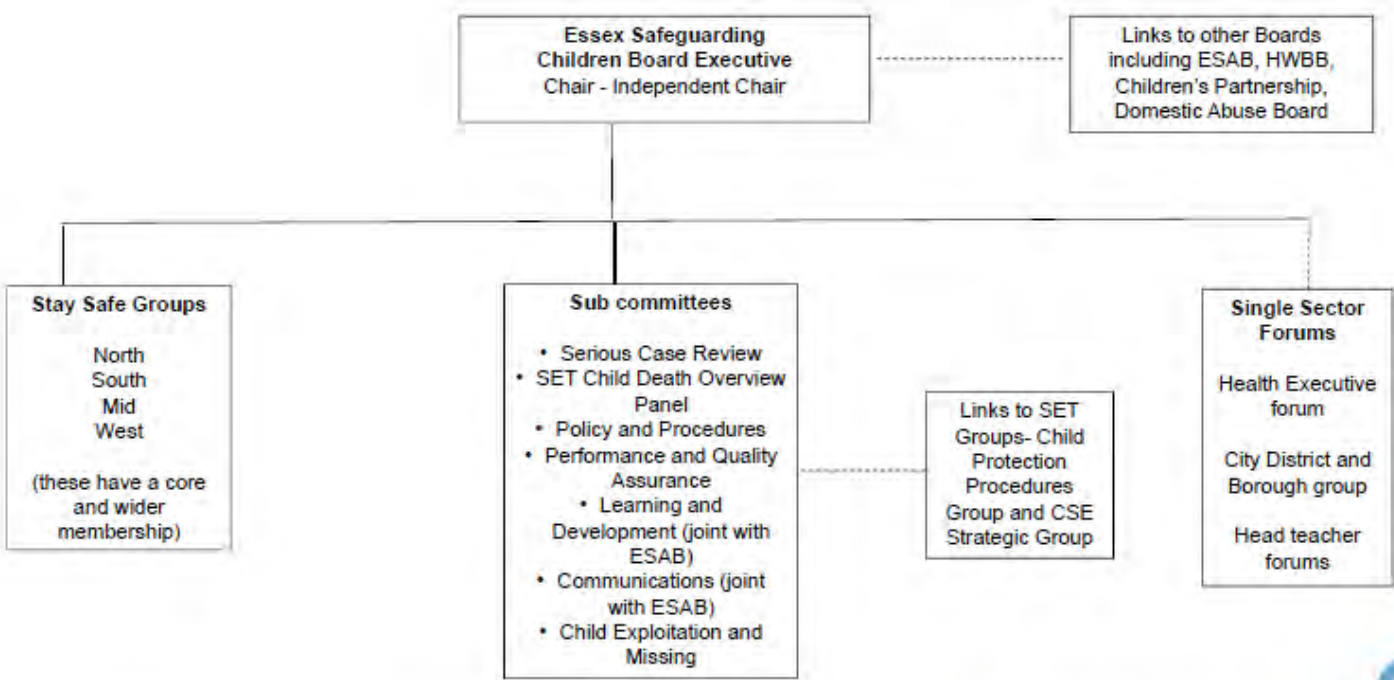
EWMHS – Emotional Wellbeing and Mental Health Service

ECVYS - Essex Council for Voluntary Youth Services

Appendices

Appendix A - [ESCB Structure](#)

ESCB STRUCTURE CHART – August 2018



ESCB ASSEMBLY INCLUDES REPRESENTATIVES FROM ABOVE GROUPS AND OTHER INVOLVED AGENCIES AND MEETS 2 – 3 TIMES A YEAR TO DISCUSS AND DEBATE SAFEGUARDING ISSUES



Appendices

Appendix B - [ESCB Business Plan](#)

Appendix C - Board and Sub-Committee Attendance

ESCB Board Meeting and Executive

There was one final full Board meeting on 15th June 2017, which was held just after the first meeting of the ESCB Executive (10th May 2017). Of the 56 partners invited to the Board meeting, 33 (59%) attended. This is an increase of 9% when compared to the average Board attendance for the previous reporting year, 2016-17.

The ESCB Executive met on four occasions in the reporting year for 2017-18. The Independent Chair was in attendance for all four meetings.



Appendices

Executive Members (those in bold are statutory members)	Meetings Attended	Apologies Received	% Attendance
Community Rehabilitation Company	4/4	n/a	100%
City, Borough and District Council representative	3/4	1	75%
ECC - Children & Families	4/4	n/a	100%
ECC – Education	0/2	2	0%
Education – Primary	4/4	n/a	100%
Education – Secondary	3/4	1	75%
Education – Special	2/2	n/a	100%
Essex Police	4/4	n/a	100%
Health – CCGs	4/4	n/a	100%
Health – NELFT (EWMHS)	2/4	2	50%
Health – Virgin Care Ltd	4/4	n/a	100%
Legal Services (ECC)	4/4	n/a	100%
National Probation Service	4/4	n/a	100%
Office of the Police, Fire and Crime Commissioner	1/4	3	25%

Statutory Partners' Attendance Comparison - When comparing 2016-17 to 2017-18 data, there is almost no change in attendance as all three agencies – Police, Health, Essex County Council Children & Families – have maintained their attendance at 100%.

Themes - The themes of the Executive meetings have been as follows:

10th May 2017 - Governance implementation

7th September 2017 - Neglect, audits and learning and development

6th December 2017 - Child exploitation and gangs

8th March 2018 - Strategic Priority 3: Emotional Health and Wellbeing

Appendices

Sub-Committees - There are six active Sub-Committees of the ESCB: Child Exploitation and Missing; Learning and Development; Performance, Audit and Quality Assurance; Policy Procedures and Practice Development; Serious Case Review; and, Strategic Child Death Overview Panel (SCDOP).

	Frequency	No. of meetings 2017-2018	Membership	Average attendance 2017-2018
Child Exploitation and Missing	Bi-monthly (now quarterly in 2018)	6	23-25	16 (64-70%)
Learning and Development (joint with ESAB)	Quarterly	4	29-31	14 (45-48%)
Performance, Audit and Quality Assurance	Bi-monthly	4	16-17	11 (65-69%)
Policy, Procedures and Practice Development (virtual)*	Quarterly	0	11	n/a
Serious Case Review Sub-Committee	Quarterly, and extraordinary meetings when required	4	11	9 (82%)
Child Death Overview Panel	Quarterly	4	18-19	10 (53-56%)
Communications (virtual and joint with ESAB) **	Virtual -updates as required	0	14-15	n/a

*Policies & Procedures Sub-Committee is a virtual group and had zero meetings because priority has been given to updating the SET child protection procedures.

**Communications Sub-Committee is a virtual group and updates are sent to the group for information and comment as required throughout the year.

Appendices

Appendix D - Finance

How much did ESCB's work cost in 2017-18?

The Board's work is funded by partner contributions and a small training income. In 2017-18 contributions totalled £384,000. The work was achieved within that budget. The contributing agencies were:

Contributing Partner	£
CAFCASS	550
City, District and Borough Councils (1,210 each)	14,520
Community Rehabilitation Company	5,082
Essex County Council	213,166
Essex Police and Crime Commissioner	66,426
National Probation Service	2,415
NHS Basildon & Brentwood CCG	12,555
NHS Castle Point & Rochford CCG	7,705
NHS Mid Essex CCG	16,142
NHS North East Essex CCG	17,337
NHS West Essex CCG	12,687

(In addition, Thurrock and Southend Councils contribute £5,551 each towards the cost of the Child Death Review process which involves all three areas).



		AGENDA ITEM 5
		PAF/20/18
Committee:	People and Families Policy and Scrutiny Committee	
Date:	13 September 2018	
Enquiries to:	Name: Graham Hughes Designation: Senior Democratic Services Officer Contact details: 033301 34574 Graham.hughes@essex.gov.uk	

WORK PROGRAMME

Briefings

Further briefings and discussion days will continue to be scheduled on an ongoing basis as identified and required.

Formal committee activity

Items programmed/being considered to come to Committee are listed in Appendix A.

Task and Finish Group activity

There is currently no Task and Finish Group activity.

Chairman and Vice Chairmen meetings

The Chairman and Vice Chairmen meet monthly in between scheduled meetings of the Committee to discuss work planning and meet officers as part of preparation for future items. The Chairman and Vice Chairmen also meet the Cabinet Members for Education, Children & Families, and Health and Adult Social Care on a regular basis.

Action required by Members at this meeting:

To consider this report, discuss future work activity, and whether any changes are required to the work programme.

People and Families Policy and Scrutiny Committee: 16 August 2018
Work programme (subject to further investigation, scoping and evaluation) for 2018/19 municipal year

Date/timing	Issue/Topic	Focus/other comments	Approach
Items identified for formal scrutiny in full committee			
13 September 2018	Safeguarding - Children	Rescheduled timing to align with publication of Essex Safeguarding Children Board Annual Report during the summer.	(i) To challenge performance and priorities. (ii) Consider operational areas for further focus such as on looked-after children/Child Sexual Exploitation, gang culture, missing children to be scheduled at a later date
11 October 2018	Safeguarding - Adults	Rescheduled timing to align with publication of Essex Safeguarding Adults Board Annual Report and future priorities	(i) Formal session to challenge performance and priorities. (ii) Consider operational areas for further focus to be scheduled at a later date
11 October 2018	Essex Care Market – relationships with care providers	Follow-up on issues raised in June 2018 session specifically on more information to be provided on aged/older debt and the split between small and large companies.	(i) Initial discussion in June 2018. Further full committee session. (ii) Identify any further follow-up work which may be conducted in full committee or by Task & Finish Group
TBC	0-19 contract with Virgin Care	Review contract performance after a year of operation (KPIs, involvement of CVS etc).	(i) Private briefing in July on background etc, (ii) Formal session in August to challenge performance. (iii) Site visits to Family Hubs to be arranged. (iv) Further session(s) with sub-contractors and service users to be scoped and arranged.
TBC	Hip fractures and falls prevention Task and Finish Group	Follow-up on the specific recommendations that are applicable to this committee	TBC
8 November 2018	Young Carers Service	A new service has been delivered in-house by ECC from 1 April 2018. The Cabinet decision was called-in but later withdrawn after an informal meeting with the Cabinet Member.	(i) Post-implementation review of new service (six months after Contract commencement) as agreed as part of the withdrawal of the call-in. (ii) Identify any further follow-up work which may be conducted in full committee or by Task & Finish Group
TBC (after the sale has completed)	Cabinet Decision FP/102/03/18 – Review of Essex Education Services	Update on how the strategic objectives stated in the decision paper have been met, provide more information on the financial payback period, and how to encourage EES maintaining a strategic presence in the county.	Full committee session to follow up on the call-in discussion in June 2018 and reassurances being sought.
11 April 2019	Educational Attainment	Annual update and discussion.	TBC
April/May 2019	School Places planning	Refreshed 10 Year Plan and primary and secondary 'Offer day'.	Private briefing update held in May 2018. Likely private briefing update – timing TBC

Task and Finish Group reviews

To be confirmed – none currently operating.

Issues still under consideration and/or for further evaluation

TBC	Educational Attainment	Separate session to the Annual update could be scheduled to focus on specific issues raised at the time of the last Annual update - or focus the next annual update on specific issues. One matter raised was an update on work being undertaken to develop a minimum service entitlement identified for those with special needs and developing/identifying an outcomes tools framework.	TBC.
TBC	The Care Market	Care Act duties and market shaping and sufficiency and looking at relationships with providers.	(i) Formal session reviewing relationship management held in June 2018 and follow-up identified later in the year. (ii) possible work on the personalisation agenda and the sustainability of the care provider workforce is being scoped.
TBC	Learning Disabilities	A wide ranging cross-cutting issue – will need detailed focus if go beyond a preliminary briefing.	Private preparatory briefing from ECC officers on structures and issues in October 2017. No specific follow-up work was suggested but could be revisited.
TBC	Disruptive children	Could look at the criteria for access to support services.	Further investigation with key officers necessary before being able to scope any review.
TBC	Gang culture	Identified by Cabinet Member as issue of concern.	Some aspects may be covered as part of discussions on the work of Safeguarding Boards. Further investigation may then be needed with key officers necessary before being able to scope any detailed review.
TBC	Residential and Domiciliary Care	A previous Task and Finish Group made recommendations on recruitment, retention, staff training and raising the profile of carers in the community	TBC