

# Essex County Council PSEG

26th September 2019

Dominic Collins: Director for Economic Growth and Localities

Dawn Redpath: Head of Economic Growth



Essex County Council

# **SELEP: Essex County Council Role**

*Provides:*

- Legal Framework / S151 Functions

*Distinct and separate to:*

- Practical support: facilitation between districts / boroughs and SELEP
- Enabling role and
- Strategic leadership role

***Last two points becoming more important as ECC taking on a more strategic influencing role***

# ECC Outcomes:

- ECC successfully submitted total of 31 applications to Local Growth Fund (LGF)
- £60m total ECC financial contribution
- ECC's total LGF allocation - £104m of which approx. £69,132,578 has been spent to date (Q1 2019/20)
- 31 ECC Local Growth Fund (LGF) projects put forward , of which 10 have been completed
- 4 ECC Growing Places Fund projects, with a total GPF allocation of £9,750,000
- EU Funds Secured:
  - Invest Essex ERDF - £603,000
  - Mercury Theatre ERDF - £1.2
  - Supply for Support for Individuals who are NEET or at Risk of NEET - £ 173,030
  - Supply of Skills Support for the Workforce £1,000,000
  - Supply of Skills Support for the Unemployed £ 858,056
  - Community Grants £ 250,000
- Dedicated support to local authorities to submit business cases
- Partnership support e.g. Essex Business board & Integrated Growth Forum

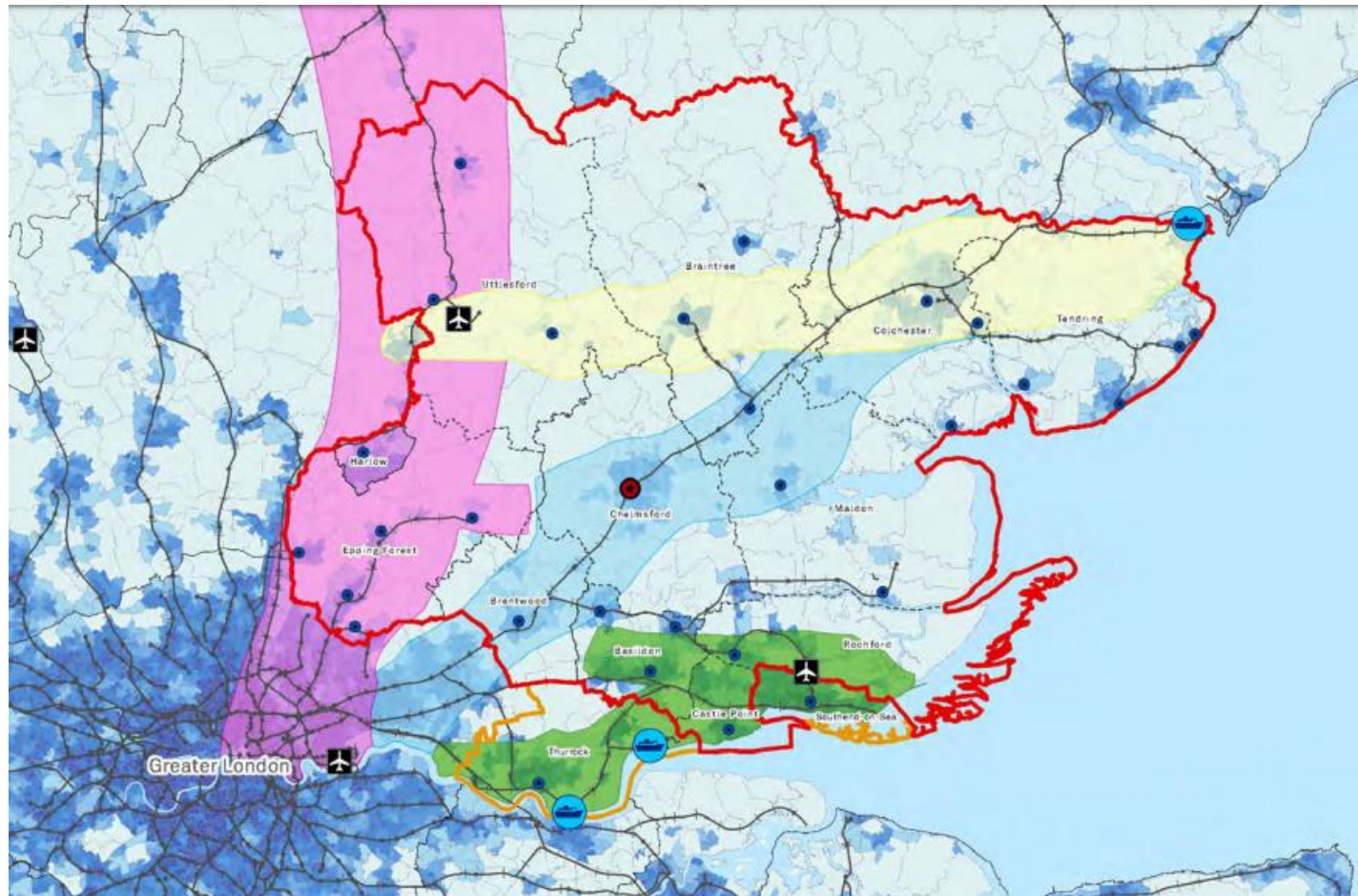
# LGF AWARDS: ECC AREA





LGF Allocations			
Project Name	Upper Tier	LGF (£m)	TOTAL (£m)
Essex			
Colchester Broadband Infrastructure	Essex	0.200	
Colchester LSTF	Essex	2.400	
Colchester Integrated Transport Package	Essex	5.000	
Colchester Town Centre	Essex	4.600	
TGSE LSTF - Essex	Essex	3.000	
A414 Pinch Point Package: A414 First Avenue & Cambridge Rd junction	Essex	10.487	
A414 Maldon to Chelmsford RBS	Essex	2.000	
Chelmsford Station / Station Square / Mill Yard	Essex	3.000	
Basildon Integrated Transport Package	Essex	6.586	
Colchester Park and Ride and Bus Priority measures	Essex	5.800	
A131 Chelmsford to Braintree	Essex	3.660	
A414 Harlow to Chelmsford	Essex		
A133 Colchester to Clacton	Essex	2.740	
A131 Braintree to Sudbury	Essex	1.800	
Chelmsford City Growth Area Scheme	Essex	10.000	
Chelmsford Flood Alleviation Scheme	Essex		
Beaulieu Park Railway Station	Essex	12.000	
Coastal Communities Housing Intervention (Jaywick)	Essex	0.667	
Gilden Way Upgrading, Harlow	Essex	5.000	
Technical and Professional Skills Centre at Stansted Airport	Essex	3.500	
Innovation Centre - University of Essex Knowledge Gateway	Essex	2.000	
STEM Innovation Centre - Colchester Institute	Essex	5.000	
A127/A130 Fairglen Interchange new link road	Essex	6.235	
M11 Junction 8 Improvements	Essex	2.734	
Mercury Rising Theatre	Essex	1.000	
Digital Technologies Campus, Basildon	Essex	2.150	
Colchester Institute	Essex	0.100	
USP College Centre of Excellence for Digital Technologies and Immersive Learning	Essex	0.900	
Flightpath Phase 2	Essex	1.422	103.980

# GPF Awards: ECC Area

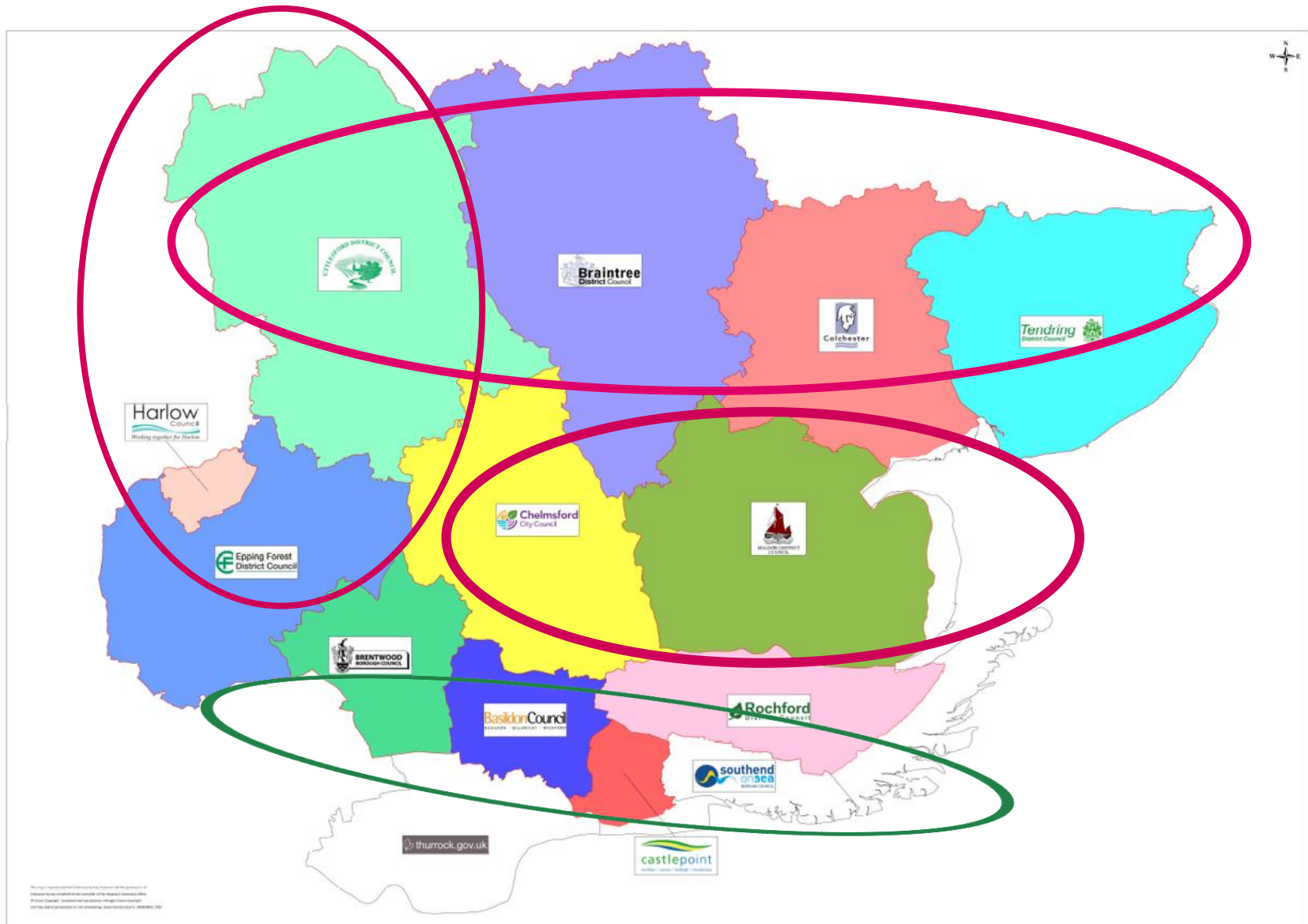
GPF Allocations						
Project Name	Upper Tier	Total Drawn Down to Date (£m)	Total Spent to Date (£m)	Total Repaid by 31st March 2019 (£m)	Total Allocation (£m)	Total Allocation for area (£m)
Essex						
Parkside Office Village	Essex	3.250	3.250	3.250	3.250	-
Chelmsford Urban Expansion	Essex	1.000	1.000	1.000	1.000	-
Harlow West Essex	Essex/Harlow	1.500	1.500	1.500	1.500	-
Colchester Northern Gateway	Essex	-	-	-	2.000	
Centre for Advanced Automotive and Process Engineering	Essex	2.000	2.000	-	2.000	9.750

# Essex Growth Corridors / Roads



-  M11 / West
-  A12 / North
-  A120 / Centre
-  A13 / 127 South

# Essex Economic Corridors



# Current Activity:

- Supporting emergence of new refreshed federated board for Essex;
- Alignment of activity across all Essex corridors, minimising duplication and maximising benefits;
- Delivering existing pipeline of activity
- Scoping Essex landscape for key strategic resourcing opportunities
- Working with key partners to develop Essex Local Industrial Strategy aligned to SELEP



# Evidence Base (SWOT analysis)

## Strengths

- Recent economic & productivity growth
- High employment & low unemployment
- Above average business start up & survival rates
- 19,040 knowledge sector businesses (e.g. finance & business services (62%), ICT related, R&D (25%))
- Established cutting edge businesses
- Proximity to London & Cambridge
- International connectivity via air & sea ports
- 7 Essex districts at/above average (Vibrancy Index)

## Opportunities

- Major infrastructure investments e.g. Bradwell, Lower Thames Crossing
- In 2030, local employers will require 498,726 higher, 274,088 intermediate & 40,772 low level skills
- Knowledge economy potential for growth - energy generation, space, digital & medical technologies
- Improved transport, business & IT infrastructure as a catalyst for growth & prosperity
- Housing growth of c.180k homes by 2035

## Weaknesses

- Economic performance lags behind the South East & UK averages – lower productivity, growth & job density
- Below average skills levels, notably at NVQ 3 & 4+
- Skills mismatch between supply & demand
- Infrastructure challenges – congestion & housing need
- Lack of industrial space & grow on space
- Few large firms, largely micro - small businesses
- 7 Essex districts are below average (Vibrancy Index) with areas of significant disadvantage

## Threats

- Future skills gaps - In 2030, we face a 51-165k higher level skills gap & 59-75k & 117-157k surpluses of intermediate & low level skills
- Some firms have set up in other areas to improve access to skills; others would not move here now.
- Ageing population - By 2035, 4% growth in working age (11% all ages)
- Investment may bypass Essex due to its relative need, strategic advocacy or unpreparedness

# Essex Productivity Prospectus

- Focused on improving productivity whilst ensuring that all residents are able to contribute to and benefit from growth;
- Recognises local activity as separate from where value can be added at intermediate and cross-county level
- Grounded in deliverability and clearly linked to strategic objectives
- Innovative and celebrating strengths, tone is positive
- Shared objectives developed and owned by all stakeholders
- Both a standalone document as well as supporting access to Shared Prosperity Fund / SELEP Funds

# Future role of ECC:

- Develop and enable coherence in economic strategy and delivery across Essex
- Support/ facilitation role with local authorities – coming together cross-boundary to develop shared priorities that add value
- Producing and maintaining agreed strategic project pipeline in order to lever in maximum resource
- Promotion and improving profile of Essex within SELEP context
- Strategic leadership role, at forefront of innovation in economic strategy and delivery
- Enabling strong and functional partnerships

# Opportunities and Challenges

- ECC able to consolidate position and profile across geography through meaningful engagement and recognised delivery;
- A new, refreshed federated board is well positioned to maximise future funding benefits and improve Essex profile;
- Changes to SELEP Strategic Board herald change and new ways of working which ECC should capitalise on

However:

- Continuously changing national political and economic landscape present challenges;
- Local Authority resources diminishing, needs to continue to prioritise economic growth