

Basildon and Brentwood NHS Clinical Commissioning Group

**Essex Health & Wellbeing Board
19th September 2012**

**Tonia Parsons – Chief Operating Officer and interim Accountable
Officer**

Dr Anil Chopra – interim Chair

Who are we ?

- * Population 268,000
- * Four localities - geographically based
- * 45 Practices
- * A health system facing significant challenges
- * Budget circa £287m - QIPP challenge £6.8m in 2012/13
- * Main providers – Basildon, Queens and Broomfield Hospitals
- * 2 community hospitals, inc 39 community beds
- * Complex patient flows

South Essex: Clinical Commissioning Groups, by main practice site, December 2011



■ PCT Clusters 2011
□ LA/UA boundary

Brentwood

Basildon

Rochford

Southend

Thurrock

Rayleigh

- BAS
- BRE
- CPO
- ☆ IND
- ◆ MCG
- RAR
- ◆ SEC
- SEE
- ▲ THO
- THU

0 2.5 5 10 15 20
Kilometers

Source: CCG data, erpho, December 2011

Based on Ordnance Survey material.

© Crown copyright and database rights 2007. Ordnance Survey erpho 100040338 2011

Contains public sector information licensed under the Open Government Licence v1.0

Basildon and Brentwood CCG

Brentwood
75,000 pts

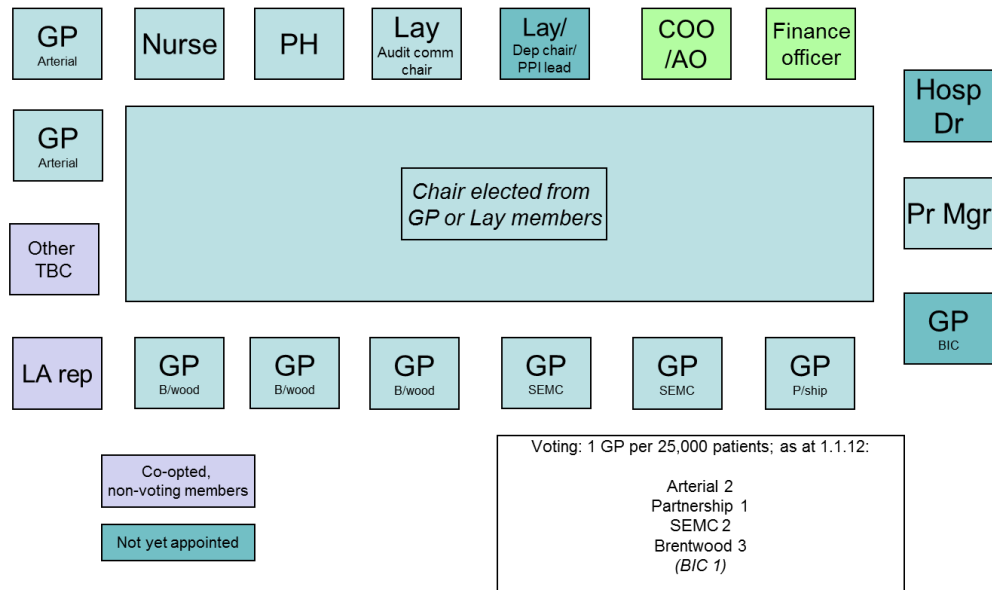
Arterial
(Billericay/Basildon/Pitsea)
64,000

Partnership (Basildon)
37,000

South Essex Managed
Care (Wickford) 58,000

Basildon and
Brentwood CCG
Board

Total population c
268,000 patients



Our Team

Dr Chopra	Interim Chair
Tony Cox	Vice Chair and interim Lay Member Audit & Governance
GP board members	9 locality elected GP members
GP leads	7 selected leads in key clinical areas
Tonia Parsons	Interim Accountable Officer
Tonia Parsons	Chief Operating Officer
Terry Radia	Interim Chief Finance Officer
Ian Wake	Public Health Consultant
Lisa Allen	Board Nurse
Tony Cox	
New appointment TBC	Lay Member PPE
New appointment TBC	Secondary Care Consultant
Simon Griffiths	Local Authority Representative

Basildon, Wickford, Billericay and Pitsea

- * Deprivation is generally lower than the England average, but...
- * Income deprivation affecting children and older varies considerably across the patch
 - * 8,970 children live in poverty.
 - * Around 16.5% of Year 6 children are classified as obese
 - * Life expectancy is 10.1 years lower for men and 7.3 years lower for women in the most deprived areas of Basildon than in the least deprived areas

Brentwood

- * Early death rates from cancer, heart disease and stroke have decreased over past 10yrs and better than the England average
- * Deprivation is lower than average, and levels of GCSE attainment are better than the regional and England average, but still:
 - * 1,530 children live in poverty
 - * Around 12.8% of Year 6 children are classified as obese.
 - * Life expectancy for both men and women is higher than the England average but there is a 6.5 yr difference in life expectancy difference between the most and least deprived areas in Brentwood.

What do we want to achieve?

Our vision statement

- * “The practices of the CCG will work closely together to improve patient care, where the needs of patients should be at the very heart of clinical decision making. Members will work together with stakeholders to ensure that commissioned services are of the highest quality, making most effective use of resources and bringing care closer to home.”*

Our priorities and Objectives for 2012/13 and beyond ...

JSNA
Provider Performance
Resources
National priorities & policy
Benchmarking

- * **To promote health, prevention and the management of disease and in doing so reducing morbidity and the reliance on secondary care**
- * 5 JSNA priorities: Circulatory disease, respiratory, endocrine/nutritional, lung cancer, lifestyle.
- * Work together with patients, communities and partner organisations to plan and deliver services that are local to the community in appropriate settings
- * Provide care that is effective, of a high quality and provides value for money
- * Look to address local health inequalities across all localities

Our priorities and Objectives for 2012/13 and beyond ...

Commissioning and Service Priorities

- * Quality is top priority – improve performance in key areas, eg cancer, waiting times, SHMI, etc
- * Improve community services, especially for the elderly, maximise benefits of our community hospitals
- * GPs to take direct control of their referrals into hospital, ensuring the most beneficial and cost effective use of hospital services
- * Medicines management, continue to improve the use of new therapies and reduce those less effective
- * Support the children's and mental health commissioning teams in the new Commissioning Support Unit, ensuring the benefits of system wide working are maintained

Our organisation ...

What have we achieved so far?

- * Shadow form April 2012, sub-committee of the PCT
- * Wave 4 (November) application for authorisation – policies and governance documents in place
- * Our board constructed, constitution in draft
- * Clinical Executive Committee in place to plan and review services and inform strategy development
- * Formal sub committees in place, finance, audit, etc
- * Locality groups in place, inc local groups for patient and public engagement, review of activity, etc
- * Rep on H&WBB – Essex, and local Brentwood and formative Basildon groups
- * Local referral management scheme set up in each locality

Thank you

Any Questions ... ?