



INSIGHT BRIEFING - PEOPLE & FAMILIES SCRUTINY COMMITTEE

DEBORAH STUART-ANGUS

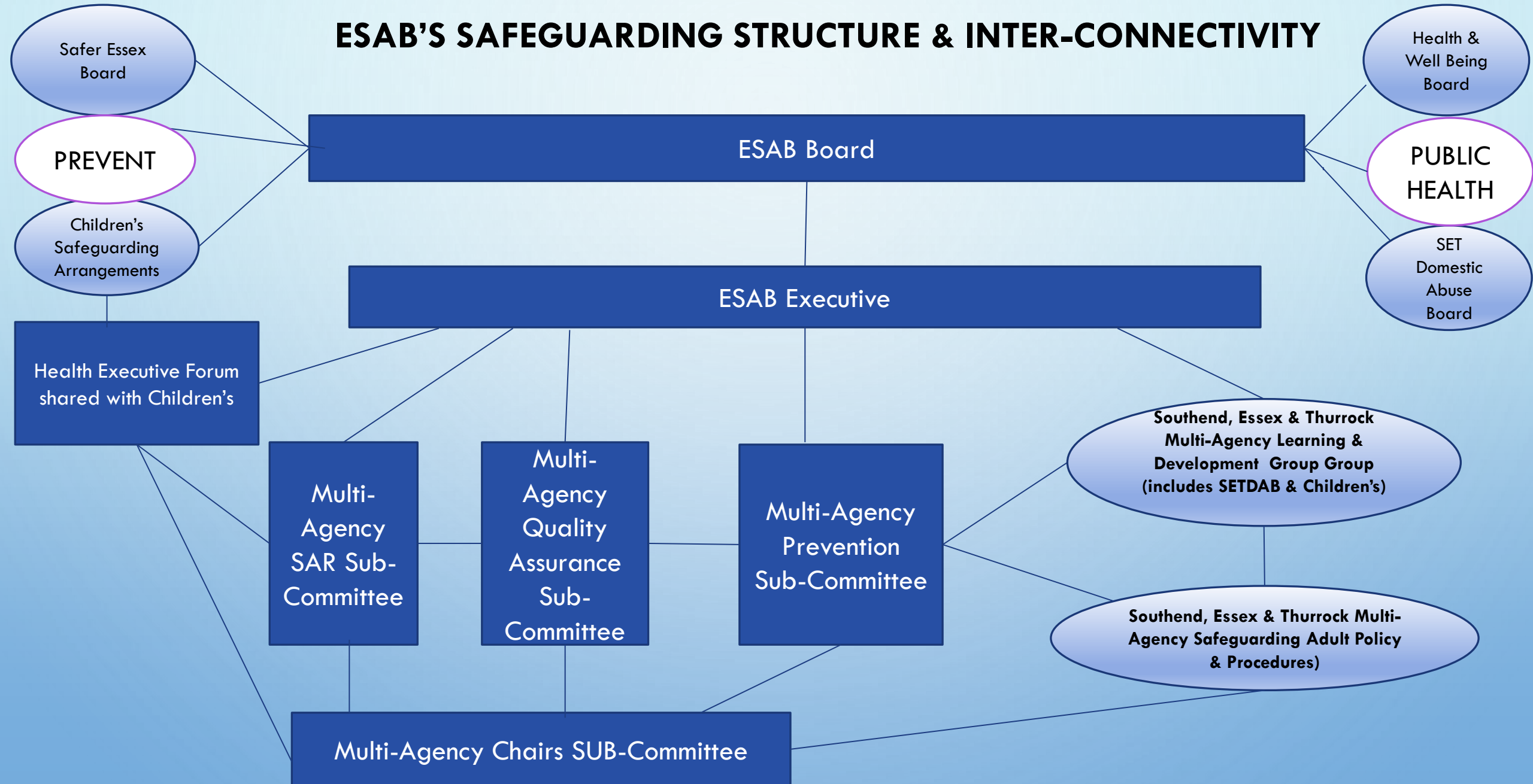
ESSEX SAFEGUARDING ADULTS BOARD INDEPENDENT CHAIR, SEPTEMBER 2022

WHAT WILL WE COVER TODAY?

1. OUR STRUCTURE
2. OUR MEMBERSHIP
3. OUR STATUTORY DUTIES, FUNCTION & PURPOSE
4. STRATEGIC PLAN 21-24
5. ANNUAL REPORT 21-22
6. IMPACT & CHALLENGE
7. SAFEGUARDING DATA
8. FUTURE PRIORITIES
9. EXPENDITURE & INCOME

1.ESAB STRUCTURE & CONNECTIVITY

ESAB'S SAFEGUARDING STRUCTURE & INTER-CONNECTIVITY



2. ESAB MEMBERSHIP

MEMBER	MEMBER
Healthwatch Essex	OPCC
ECC-ASC	Safer Essex
Essex Police	National Probation Service
Voluntary Services	ICBs x3 (Formally CCGs)
Colchester Council	EPUT
HMP CHELMSFORD	Colchester Hospital
Public Health	NELFT
SET DAB	Princess Alexandra Hospital
ECC - Children's Services	Mid & South Essex Hospital Trusts
ECC-ASC	Southend Council
Essex Fire & Rescue	Thurrock Council
Estuary Housing	

3. STATUTORY OBLIGATIONS, CORE DUTIES & PURPOSE (6 SLIDES A-F)

A)ESAB'S PURPOSE

Seek	Seek assurance that local safeguarding arrangements are in place
Prevent	Prevent abuse & neglect where possible
Provide	Provide a timely & proportionate response when abuse or neglect has occurred
Lead	Lead adult safeguarding across our partnership & oversee effectiveness of safeguarding work of members
Concern	Concern itself with a range of prevention matters e.g. patient safety; quality of local care and support services & effectiveness of safeguarding in prison & probation services

B) CARE ACT
2014

STATUTORY
FOOTING

ECC DUTY

1) **ECC must** establish a SAB for its area, to help and protect adults with care and support needs (s42(1))

2) **ESAB must** co-ordinate & ensure effectiveness of safeguarding activity of its members, (and all partners must deploy and manage their own statutory, safeguarding responsibility)

3) **ESAB may do anything** which appears necessary or desirable for the purpose of achieving its objective.

4) **Schedule 2 (s42, s43, s44 and s45)** have effect in relation to provision about membership, funding, resources, strategy, annual reporting, duty to co-operate, information sharing & carrying out enquiries.

C) ESAB'S 3 CORE DUTIES

1.We must develop and publish a Strategic Plan setting out how we will meet our strategic objectives & how partners will contribute.

2.We must publish an Annual Report detailing how effective safeguarding activity has been across our partnership.

3.We must arrange a Safeguarding Adult Review (SAR) for any case which meets the lawful criteria, or any case where ESAB believes that learning can be gained from how agencies worked together.

D) WHAT IS A SAFEGUARDING ADULT REVIEW (SAR) ?

A) UNDER S44 - WE MUST ARRANGE FOR REVIEW OF A CASE INVOLVING AN ADULT IN ESSEX WHO HAS CARE & SUPPORT NEEDS, WHETHER OR NOT ECC IS/HAS BEEN MEETING THOSE NEEDS

IF:

- THERE IS REASONABLE CAUSE FOR CONCERN ABOUT HOW THE SAB MEMBERS OR OTHERS, WITH RELEVANT FUNCTIONS, WORKED TOGETHER TO SAFEGUARD THE ADULT

&

- CONDITION 1 OR 2 IS MET :

1: AN ADULT HAS DIED & ESAB KNOWS OR SUSPECTS THAT DEATH RESULTED FROM ABUSE OR NEGLECT (WHETHER, OR NOT WE KNEW ABOUT, OR SUSPECTED THIS, BEFORE DEATH.

2: WHEN THE ADULT IS ALIVE, & ESAB KNOWS OR SUSPECTS THEY HAVE EXPERIENCED SERIOUS ABUSE OR NEGLECT.

B) WE ALSO MAY ARRANGE FOR A SAR FOR ANY OTHER PERSON IN OUR AREA (WHETHER OR NOT ECC WERE/ARE MEETING THEIR CARE & SUPPORT NEEDS.

C) ALL ESAB MEMBERS MUST CO-OPERATE IN AND CONTRIBUTE TO CARRYING OUT A SAR IN ORDER TO IDENTIFY LESSONS TO BE LEARNT & APPLY THE LESSONS IN FUTURE.



E) WHAT IS THE PURPOSE OF A SAR?

MUST	MUST NOT
be relevant for learning lessons, practice & service improvement & adjustment	investigate
identify lessons within & between agencies, & how and in what timescale lessons will be acted upon	apportion blame
must identify what will be different as a result, for practice to improve	act as judge & jury
must review effectiveness of policy & procedures (multi-agency and organisational).	use hindsight bias
SHOULD improve intra and inter-agency working to better safeguard adults at risk.	

F) SAR MULTI- AGENCY SUB- COMMITTEE

Provides a professional forum to review all SAR referrals, where adults have died unexpectedly, suffered significant harm, and for whom this has led to serious consequences.

Makes recommendations to the Independent Chair, with regard to taking referrals forward, either as a formal SAR , or not, or in as a more appropriate review- e.g. DHR; Child Practice Review or Single Agency Review (Serious Incident/ Root Cause Analyses etc)

Sets out clear guidance on SAR governance; quality assurance; SAR methodology and commissioning processes for independent reviewers

Manages, monitors and evidence bases all agency action plans and outcomes

4) STRATEGIC PLAN

STRATEGIC PLAN

SETS OUT

3 PRIORITIES : PREVENTION; QUALITY & LEARNING WITH:

- ASSOCIATED SAFEGUARDING OBJECTIVES
- ASSOCIATED BUSINESS PLAN AND KEY DELIVERABLES
- RAG RATED WORK PLAN
- DELIVERABLES THAT FORMULATE EACH SUB-COMMITTEES DELIVERY PLAN
- MONITORING OF DELIVERABLES VIA EXECUTIVE COMMITTEE
- CONNECTIVITY TO ECC'S CORPORATE AMBITIONS & LEVELLING UP

5. ANNUAL REPORT 21-22



2021-22 ANNUAL ESAB REPORT

HIGHLIGHTS:

- **IMPACT & CHALLENGE**
- **SAFEGUARDING DATA**
- **PARTNER CONTRIBUTIONS**
- **ESAB Strategy & BUSINESS DELIVERY PLAN**
- **SARS published in the reporting year**
- **INCOME & EXPENDITURE**

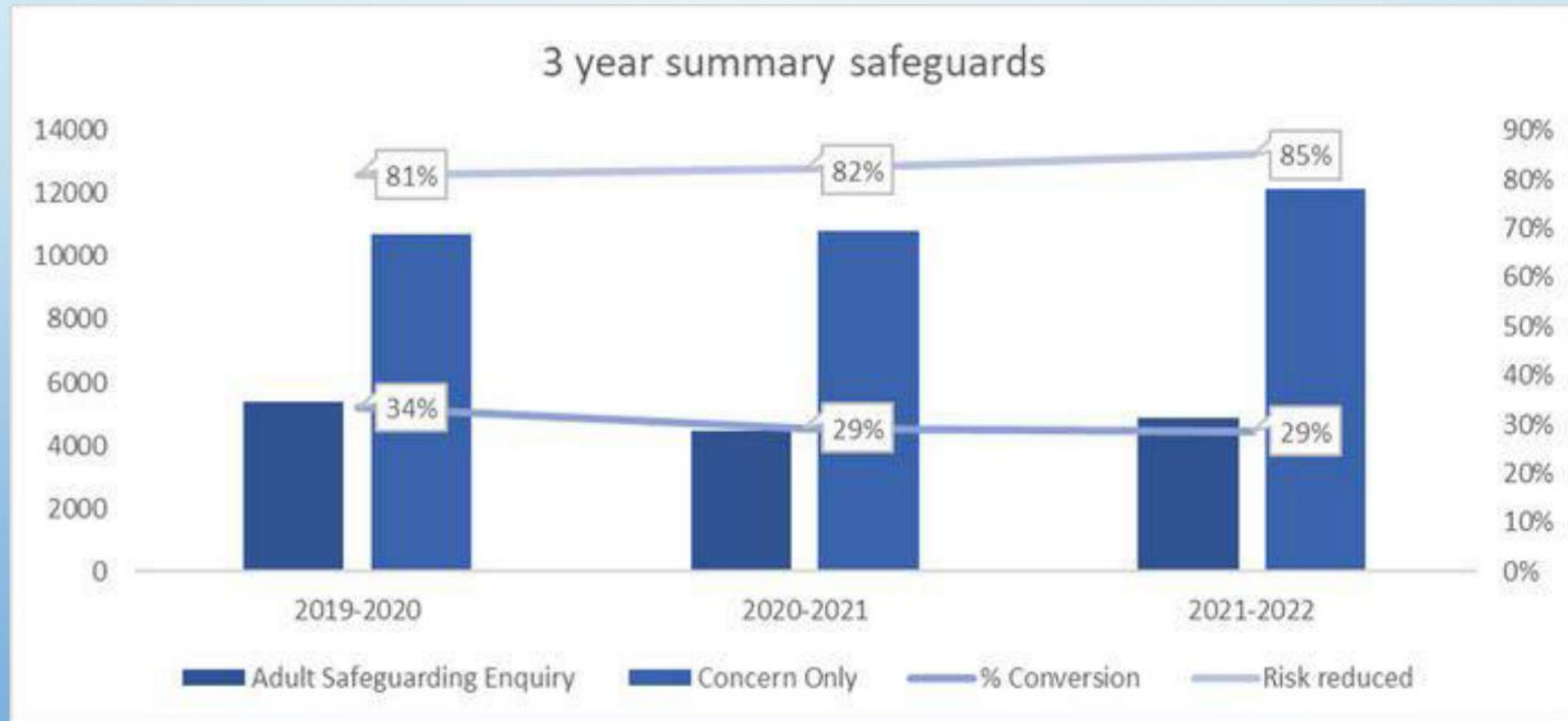
6. IMPACT & CHALLENGE

IMPACT & CHALLENGE 2021-22

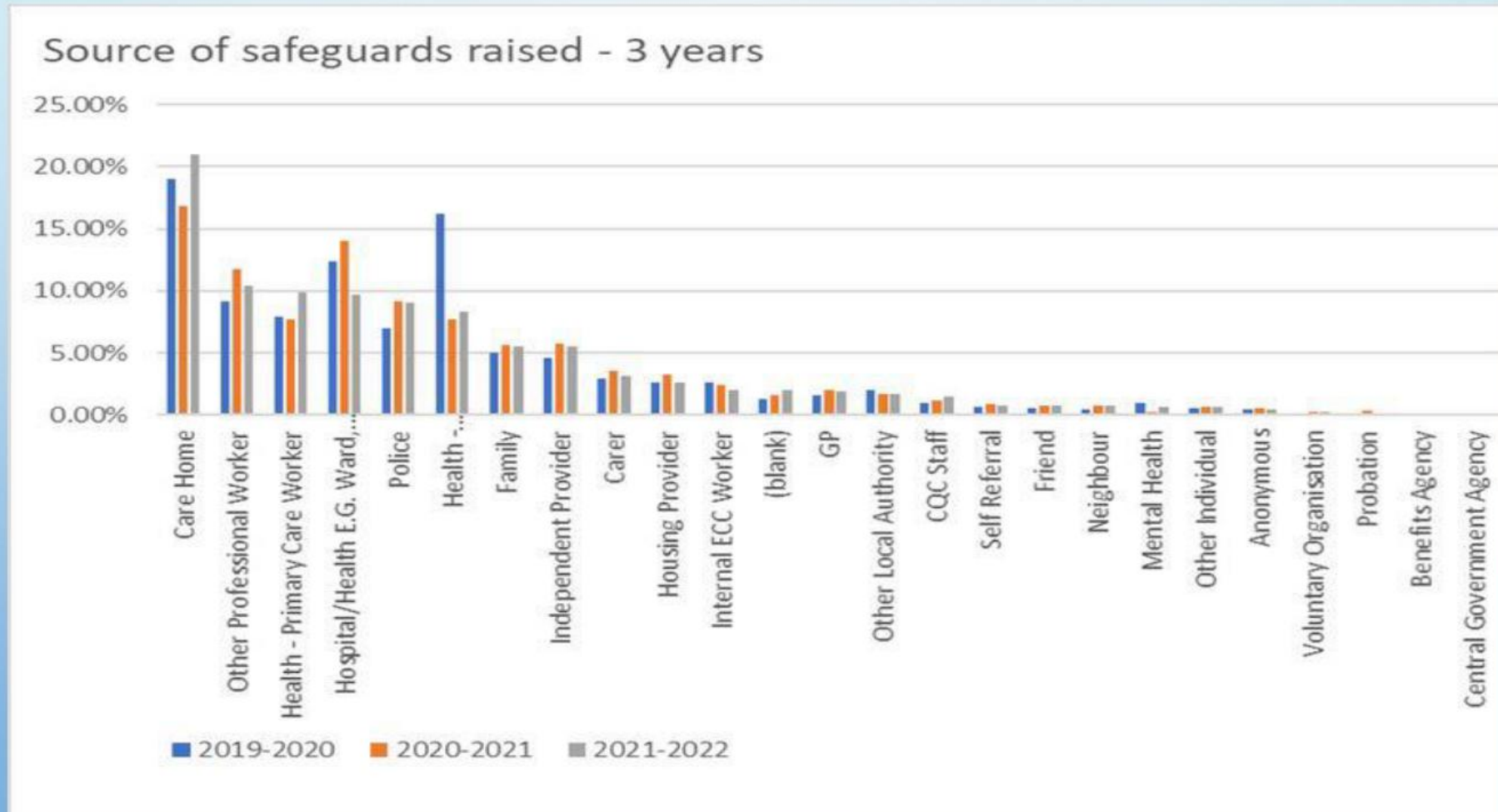
- SAFEGUARDING ASSURANCE DURING TRANSITION TO ICS
- SUPPORT TO ESAB ON PATIENT SAFETY - MENTAL HEALTH & GOVT ENQUIRY
- SET COVID STATUTORY GROUP ENSURED INFORMATION SHARING; IDENTIFICATION OF HIGH RISK; EARLY INTERVENTION AND SHARING OF GOOD PRACTICE MODELS.
- CARE HOME COVID REVIEW
- SUICIDE PREVENTION & SHARED WORKING
- SUPPORT TO HMP CHELMSFORD REGARDING RAISING CONCERNS
- RISK REGISTER DEVELOPED
- MULTI –AGENCY COMMUNICATION STRATEGY & HUMAN STORIES CAMPAIGN
- SET FGM PATHWAY; EATING DISORDER STEERING GROUP
- 1533 MULTI-AGENCY STAFF TRAINED
- SET SAFEGUARDING ADULT GUIDELINES; MODERN DAY SLAVERY POLICY; SAFER RECRUITMENT GUIDANCE & HOARDING GUIDANCE REVIEWED & UPDATED
- 8 SAR REFERRALS RECEIVED; 10 OPEN, 1 PUBLISHED

7. SAFEGUARDING ADULT DATA (5 SLIDES A-E)

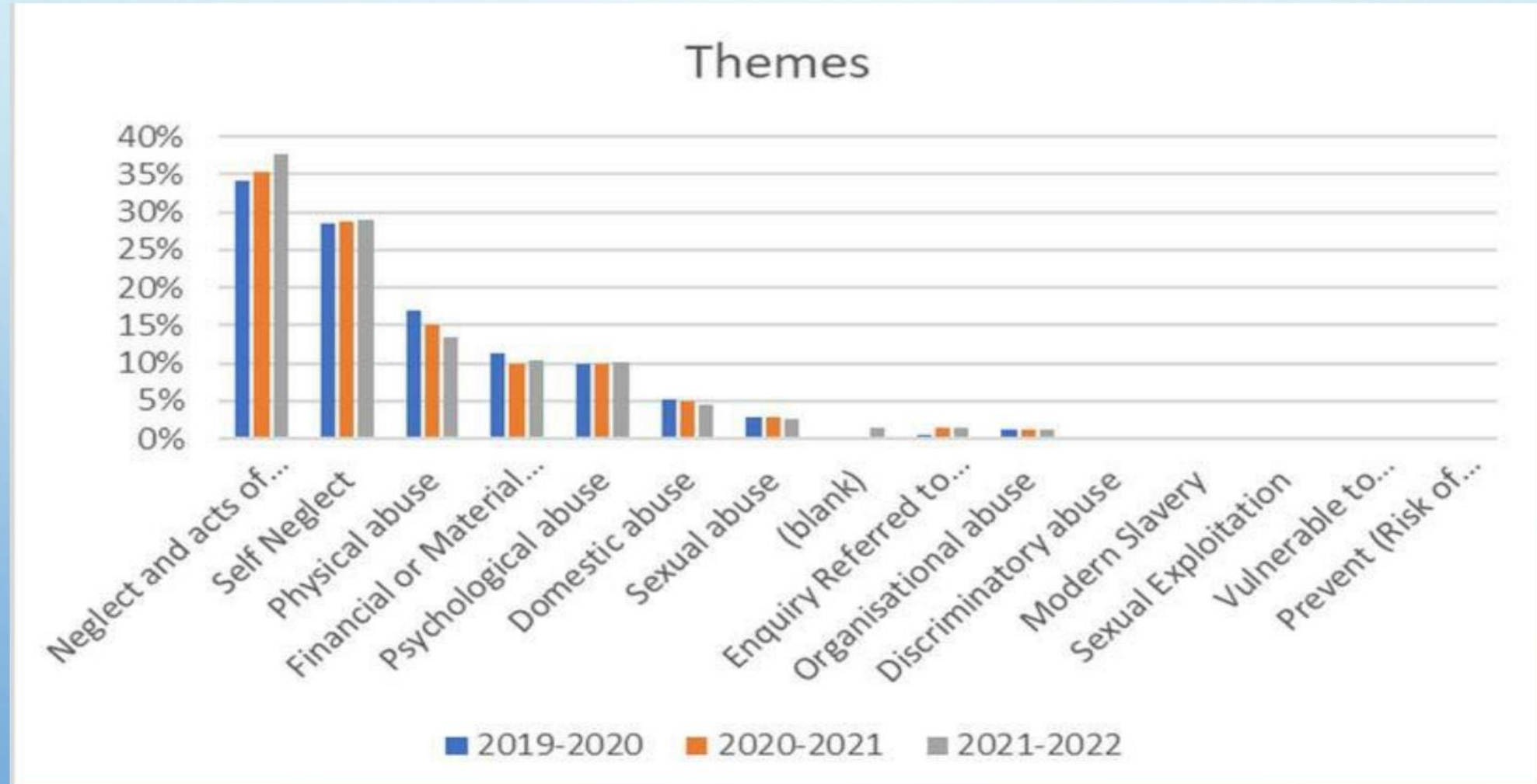
A)SAFEGUARDING REFERRALS RAISED & RISK REDUCED



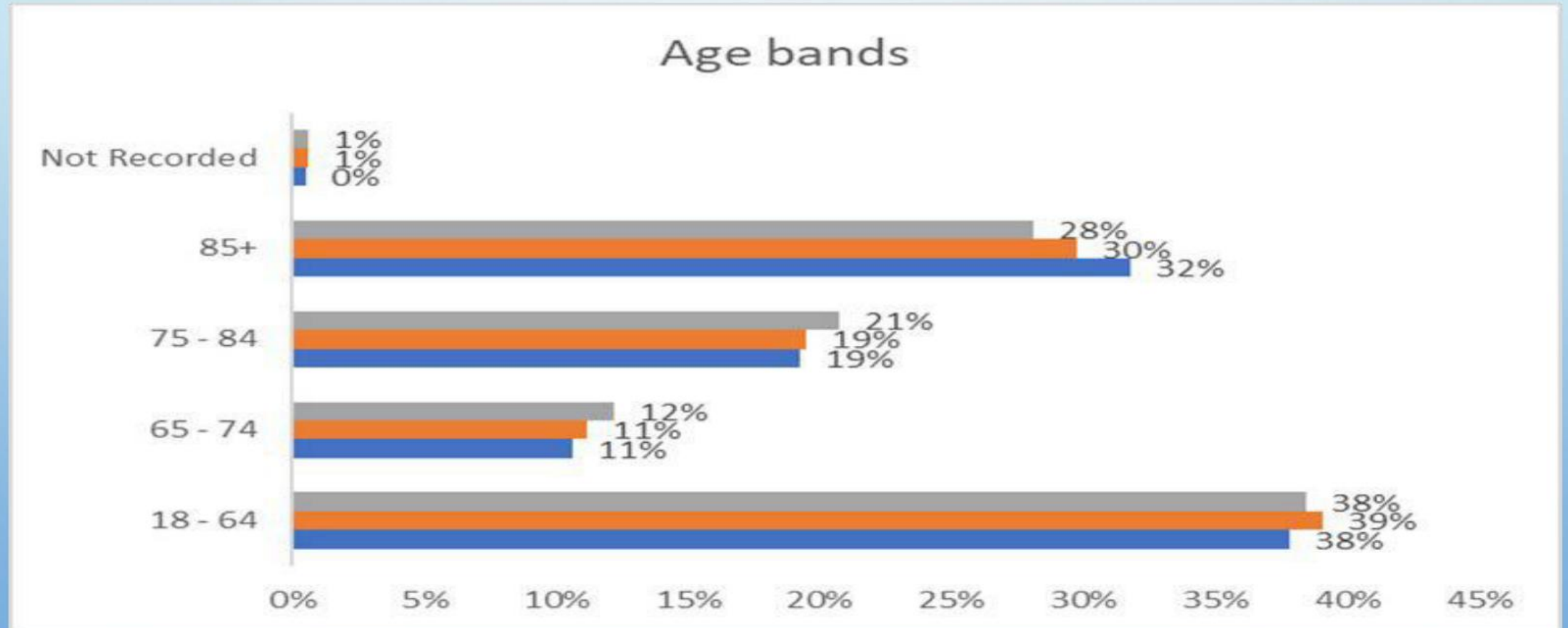
B)SOURCE OF REFERRALS



C)SAFEGUARDING THEMES



D) AGE BANDS OF REFERRALS



E)LOCATION OF ABUSE

Location	2019-2020	2020-2021	2021-2022
Own home	60%	61%	56%
Care home - residential	19%	19%	20%
Care home - nursing	5%	4%	7%
Hospital	7%	6%	5%
Other	3%	3%	3%

8. FUTURE PRIORITIES

LIKELY PRIORITIES 2024 ONWARDS

- **SUICIDE PREVENTION**
- **CONTINUED UPSKILLING OF THE CARE SECTOR**
- **QUALITY ASSURANCE IN ICS SAFEGUARDING ACTIVITY**
- **CONTINUED WORK ON PREVENTION, NOTABLY NEGLECT**
- **PRACTICE IMPROVEMENT AND TRAINING**
- **EMBEDDING CHANGE AND PRACTICE IMPROVEMENT IDENTIFIED IN SAFEGUARDING ADULT REVIEWS**
- **CONTINUED AND INCREASED, STRONG PARTNERSHIP WORKING**

9. EXPENDITURE & INCOME

EXPENDITURE & INCOME

INCOME @ £247,548: PARTNER CONTRIBUTIONS

EARNED INCOME @ £7870

TOTAL @ £255,418

SPEND @ £253,956

I hope you found this a useful insight into what the Essex Safeguarding Adult Board does and why we do it !

Building on our statutory duties, we are passionate, dedicated and committed in our partnership, to keeping the most vulnerable people, able to live a life free from harm, abuse and or neglect, across our County

Thank you for listening

Happy to take questions

Deborah

