



Essex County Council

People and Families Policy and Scrutiny Committee

10:30	Wednesday, 10 November 2021	Council Chamber County Hall, Chelmsford, CM1 1QH
--------------	--	---

For information about the meeting please ask for:

Graham Hughes, Senior Democratic Services Officer

Telephone: 033301 34574

Email: democratic.services@essex.gov.uk

Essex County Council and Committees Information

All Council and Committee Meetings are held in public unless the business is exempt in accordance with the requirements of the Local Government Act 1972.

Members of the public will be able to view and listen to any items on the agenda unless the Committee has resolved to exclude the press and public from the meeting as a result of the likely disclosure of exempt information as defined by Schedule 12A to the Local Government Act 1972.

ECC Guest Wifi

For members of the public, you can now access free wifi in County Hall.

- Please log in to 'ECC Guest'
- Follow the instructions on your web browser

Attendance at meetings

Most meetings are held at County Hall, Chelmsford, CM1 1LX. [A map and directions to County Hall can be found on our website.](#)

Access to the meeting and reasonable adjustments

County Hall is accessible via ramped access to the building for people with physical disabilities. The Council Chamber is accessible by lift located on the first and second floors of County Hall. However, access and space for the public is extremely limited due to COVID secure requirements.

Induction loop facilities are available in most Meeting Rooms. Specialist headsets are available from Reception.

Accessing Documents

If you have a need for documents in, large print, Braille, electronically or in alternative languages and easy read please contact the Democratic Services Officer before the meeting takes place. For further information about how you can access this meeting, contact the Democratic Services Officer.

The agenda is also available on the Essex County Council website, www.essex.gov.uk. From the Home Page, click on 'Running the council', then on 'How decisions are made', then 'council meetings calendar'. Finally, select the relevant committee from the calendar of meetings.

Audio recording of meetings

Please note that in the interests of improving access to the Council's meetings, a sound recording is made of the public parts of many of the Council's Committees. The Chairman will make an announcement at the start of the meeting if it is being recorded.

We are experimentally streaming some meetings on the [ECC Democracy YouTube Channel](#). You may wish to see if this meeting is being streamed but please remember that this is an experimental service. There is also an [audio broadcast accessible via our website](#).

If you are unable to attend and wish to see if the recording is available, you can visit the ECC Democracy YouTube Channel or, for the audio recording check the [Calendar of Meetings](#) any time after the meeting starts. Any audio available can be accessed via the box in the centre of the page, or the links immediately below it.

Should you wish to record the meeting, please contact the officer shown on the agenda front page.

Pages

**	Private Pre-Meeting for PAF Members Only Please note that there will be a virtual private pre-meeting for committee members at 4.00pm on Monday 8th November. Further details will be sent in due course.	
1	Membership, Apologies, Substitutions and Declarations of Interest	4 - 4
2	Minutes: 14 October 2021	5 - 11
3	Questions from the Public A period of up to 15 minutes will be allowed for members of the public to ask questions or make representations on any item on the agenda for this meeting. Please note that members of the public wishing to ask a question must email democratic.services@essex.gov.uk by	

noon on the day before the meeting (Tuesday 9 November 2021) and that questions must relate to an item on the agenda for the meeting.

- | | | |
|---|---|---------|
| 4 | Special Educational Needs and Disabilities (SEND) Strategy 2021 Update (PAF/15/21) | 12 - 65 |
| 5 | Work Programme (PAF/16/21) | 66 - 69 |
| 6 | Date of Next Meeting
To note that the next meeting will be held at 10.30am on Thursday 9 December 2021, in County Hall. | |
| 7 | Urgent Business
To consider any matter which in the opinion of the Chairman should be considered in public by reason of special circumstances (to be specified) as a matter of urgency. | |

Exempt Items

(During consideration of these items the meeting is not likely to be open to the press and public)

The following items of business have not been published on the grounds that they involve the likely disclosure of exempt information falling within Part I of Schedule 12A of the Local Government Act 1972. Members are asked to consider whether or not the press and public should be excluded during the consideration of these items. If so it will be necessary for the meeting to pass a formal resolution:

That the press and public are excluded from the meeting during the consideration of the remaining items of business on the grounds that they involve the likely disclosure of exempt information falling within Schedule 12A to the Local Government Act 1972, the specific paragraph(s) of Schedule 12A engaged being set out in the report or appendix relating to that item of business.

- | | |
|---|---|
| 8 | Urgent Exempt Business
To consider in private any other matter which in the opinion of the Chairman should be considered by reason of special circumstances (to be specified) as a matter of urgency. |
|---|---|

Agenda item 1

Committee: People and Families Policy and Scrutiny Committee

Enquiries to: Graham Hughes, Senior Democratic Services Officer

Membership, Apologies, Substitutions and Declarations of Interest

Recommendations:

To note

1. Membership as shown below
2. Apologies and substitutions
3. Declarations of interest to be made by Members in accordance with the Members' Code of Conduct

Membership (Quorum: 4)

Councillor R Gooding	Chairman
Councillor L Bowers-Flint	
Councillor S Crow	
Councillor M Durham	
Councillor J Fleming	
Councillor M Goldman	
Councillor C Guglielmi	Vice-Chairman
Councillor J Lumley	
Councillor P May	Vice-Chairman
Councillor A McGurran	
Councillor R Playle	
Councillor L Shaw	
Councillor W Stamp	
Councillor A Wiles	

Non-elected Members

Christine Martin (St John Payne Roman Catholic School - Catholic diocese representative)

Co-opted educational representative members may advise and vote on all matters relating to children's services in schools. Two places are available for church Diocesan representatives. Two further places are available for parent governors at maintained schools in Essex (one primary and one secondary school). To date one representative is in place as above. A review of representation is underway.

Minutes of the meeting of the People and Families Policy and Scrutiny Committee, held at 10.00am on Thursday, 14 October 2021 in the Council Chamber, County Hall, Chelmsford.

Present:

County Councillors:

R Gooding (Chairman)

L Bowers-Flint

M Durham

J Fleming

M Goldman

C Guglielmi

J Lumley

P May

A McGurran

R Playle

L Shaw

W Stamp

A Wiles

Graham Hughes, Senior Democratic Services Officer, Gemma Bint, Democratic Services Officer and Sharon Westfield de Cortez from Healthwatch Essex, were also present.

1 Membership, Apologies, Substitutions and Declarations of Interest

The report on Membership, Apologies, Substitutions and Declarations was received and noted.

An apology for absence had been received from Councillor Simon Crow.

2. Minutes

The minutes of the meeting held on 9 September 2021 were approved as a true record and signed by the Chairman.

3. Questions from the public

There were no questions from the public.

4. Early Years and Childcare Strategy 2022

The Committee considered report PAF/11/2021 and the following people from Essex County Council attended the meeting to introduce the item and respond to questions:

Councillor Beverley Egan – Cabinet Member for Children’s Services and Early Years,

Carolyn Terry – EYCC Sufficiency and Sustainability Manager.

The Committee received a presentation on the background of the Early Years and Childcare Strategy including the consultation and engagements taken place, the positive impact of the previous Strategy and the vision for Early Years and Childcare incorporating the new strategic aims and key priorities.

Following the presentation, the following was highlighted/raised:

- (i) Early identification of the children who needed support was critical. Work was undertaken with the Essex Child Family Wellbeing Service and childcare providers to help identify those children as early as possible.
- (ii) Summer born children could be at a disadvantage and did not always achieve a good level of development and that was mainly due to being a year younger than some of their peers.
- (iii) A non-academic way of assessing a child or young person was being launched across schools in Essex including early years settings.
- (iv) The Free Early Education Entitlement Funding was allocated to Essex based on demographics such as population numbers, indices of deprivation and rurality. There continued to be a national debate around the levels of funding for early years settings and school run settings. Essex was funded on a participation level, with the more children that accessed the funding the more funding Essex received.
- (v) The feedback from the consultation survey formed a big part of the design of the strategy. The survey had been available online but had also been sent to all early years settings and schools, and distributed through the Essex Child Family Wellbeing Service, the Working Families Facebook page and ECC Twitter account.
- (vi) The majority of under-5s attending an early years' provider would be in a setting rated 'good' or 'outstanding'. Early years settings that did not receive 'good' or 'outstanding' from Ofsted received intensive support with teams deployed to work with them to help improve their outcomes. If they were unable to improve then any Free Education Entitlement funding could be withdrawn.
- (vii) There had not been Good Level of Development data collated at a national level since 2019 due to Covid, with the next collated GLD data to be available in summer 2022. However, in the meantime, preschools would still have been assessing their own children and their levels of development. In the summer holidays

some summer holiday activity groups took place to help children's physical and social interaction.

- (viii) Pre-schools and schools ran early years provision only in term time. However, the Essex Wellbeing Service and the Family Hub had comprehensive family support programmes throughout the summer holidays for children that needed more help.
- (ix) All district and borough councils were invited to the engagement sessions and workshops and ECC were keen to engage with them further.
- (x) The engagement sessions had been attended by some childcare providers. As part of the school's forum there was an Early Years Subgroup with representation from each type of childcare setting.
- (xi) A childcare efficiency audit was undertaken every year, to consider future housing developments and the forecast need for each type of childcare setting.
- (xii) There was a childcare brokerage service for parents who were unable to access childcare, the team supported them to look into how they can find childcare and what options there were.

Conclusion:

The Chairman stressed that the strategy was aspirational and that more detail was needed on implementation. It was **agreed** that the following further information be provided:

- (i) A delivery plan/timetable and significant milestones would be brought to the Committee in early 2022, to include a brief executive summary-type overview of a 5-year plan and key objectives;
- (ii) Some further information and analysis of the Word Gap with more Essex context;
- (iii) Further analysis and breakdown of feedback from the various surveys and consultations;
- (iv) More information on numbers accessing funded places and breakdown including disadvantaged children;
- (v) Information on the childcare brokerage service

Contributors were thanked for their attendance and left the meeting.

5. Home Education and Children Missing Education

The Committee considered report PAF/12/21 comprising of an initial introduction and update on the issues and challenges of Home Education in Essex.

The following people from Essex County Council attended the meeting to introduce the item and respond to questions:

Councillor Tony Ball - Cabinet Member for Education Excellence, Life-Long Learning and Employability,
Clare Kershaw – Director, Education,
Anita Patel-Lingham – Statutory Education Compliance Manager.

During the discussion the following was acknowledged, highlighted and/or noted:

- (i) The Cross-Party Working Group had been meeting weekly since September to discuss the Education Select Committee report and prepare a further response on behalf of ECC by the end of October.
- (ii) Funding was not available for parents who elect to home educate their child. The local authority did not receive funding for off-rolled children.
- (iii) Monitoring responsibilities of local authorities were very limited with guidance indicating that local authorities were not in a position to routinely monitor the home education provision of children unless it appeared that they were not receiving a suitable education. However, 2019 guidance gave local authorities responsibility to contact families who were home educating at least on an annual basis.
- (iv) Whether children were developing life skills during home education remained a concern as there was no guidance to follow and no stipulated minimum standards. The need for a national standard for different ages and levels would be included in ECC's response to the Education Select Committee.
- (v) Home education had increased over the years with lifestyle considerations being the main factor stated by parents in Essex. Parents were not required to provide a reason for electing to home educate, however they were required to write to the school and ECC would scrutinise the letter to see whether there was something to be concerned about. There were a few schools where there seemed a disproportionate number of their pupils electing to be home educated and this continued to be monitored by ECC.
- (vi) The Association of Directors of Children's Services annually collected elective home education data and ECC were in the process of putting together their response for this year. The data provided a breakdown of how many children in each year group

were currently registered as home educated and also the reasons where available.

- (vii) ECC had not received a response to its earlier submission.

Conclusion

It was **agreed** that in due course there would be a further update presented to the Committee once a response was received to ECC's submission to the Education Select Committee and Government and/or when the Cross-Party Working Group had any further aspects to report or consult the Committee on.

Contributors were thanked for their attendance and left the meeting.

Thereafter the meeting adjourned at 11.40am and reconvened at 12.05pm.

6. Domestic Abuse Update

The Committee considered report PAF/13/21 and the following people from Essex County Council attended the meeting to introduce the item and respond to questions:

Councillor Beverley Egan – Cabinet Member for Children's Services and Early Years,
Clare Burrell – Head of Strategic Commissioning and Policy.

The Committee received a presentation from Clare Burrell, Head of Strategic Commissioning and Policy which provided an overview of the Domestic Abuse Act 2021 and the duties ECC had as a Tier 1 local authority. The presentation highlighted the challenges of implementing the new duties, the benefits of the Act and an overview of the new Domestic Abuse Commissioning Strategy 2021- 2024 which included the five key objectives ECC was aiming to achieve.

During discussion, the following was highlighted/raised:

- (i) ECC now had to provide support for victims of domestic abuse in safe accommodation. ECC considered that people should be helped to stay in their own home to stop disruption in children's lives. ECC had lobbied hard and victims homes could now be viewed as safe accommodation when appropriate safety plans were in place.
- (ii) There was not currently a refuge provision for men.
- (iii) The relationship with the Police was strong. There was now a joint communications team on domestic abuse with the Police

and the Police, Fire and Crime Commissioner, encouraging people to come forward.

- (iv) The Police, Fire and Crime Commissioner's Office and the Police were key partners of the Domestic Abuse Partnership Board which had jointly commissioned some of the current services that were in place. The Domestic Abuse Partnership Board had its own strategy with five key outcomes, and was overseeing work with perpetrators to reduce offending. The Data Analytics teams were commissioned to undertake supporting work around perpetrators.
- (v) There was a working group that were looking at including domestic abuse victims within a Whole Housing Approach ,
- (vi) As part of the new Care Technology contract recently placed by Adult Social Care it was hoped to also build in more use of technology to support domestic abuse victims.
- (vii) Citizens Advice Bureaus and various other voluntary bodies were involved as key stakeholders. Governance processes had taken time in being put in place but ECC were now making progress in further building relationships.
- (viii) Key messaging was important to help people who were in denial to understand that they could be in a domestic abuse situation. This needed to include advice where there was coercive behaviours but no evidence of physical harm.
- (ix) All schools tried to offer opportunities for children and young people to speak out and talk about what they were experiencing. There was currently a range of intervention programmes and support from Mental Health school teams which was being rolled out across Essex in phases.
- (x) Children and young people who had been vulnerable to domestic abuse situations also could look for belonging and friendship in gangs and become victims in different ways later in life.
- (xi) Members agreed it would be helpful to know where to signpost and refer people when they came to them for advice on domestic abuse. Members highlighted that there was a prescribed process for reporting safeguarding concerns and suggested that similar should be developed for domestic abuse.
- (xii) During the pandemic information had been sent out to food banks to distribute with food bags and parcels.

- (xiii) Members were interested in the sustainability of funding and were minded to support any lobbying to ensure the security of future funding.
- (xiv) There was discussion about setting up a Task and Finish Group. Members agreed that the group would need to have a narrow terms of reference, sustainable finance was suggested, and/or partnership working and that there should be a clear direction with objectives.

Conclusion:

The following was **agreed**:

- (i) A meeting would be set up between the Chairman and the lead officer to further discuss the Task and Finish Group;
- (ii) Information would be re-sent to food banks in good time before Christmas;
- (iii) A more detailed slide deck on domestic abuse issues/actions beyond what was being done for children would be sent to members;
- (iv) Some examples of messaging around spotting subtle signs that may point to domestic abuse would be provided to members.
- (v) Copies of communications for where to go for help would be provided to members.

Contributors were thanked for their attendance and left the meeting.

7. Work Programme

The Committee considered and discussed report PAF/14/21 comprising the work programme for the committee.

8. Date of Next Meeting

It was noted that the next meeting was scheduled to be held on Wednesday 10 November 2021.

There being no further business the meeting closed at 1.32pm.

Chairman

Report title: SEND Strategy 2021 Update	
Report to: People and Families Policy and Scrutiny Committee	
Report author: Graham Hughes, Senior Democratic Services Officer	
Date: 10 November 2021	For: Consideration and identifying any follow-up scrutiny actions
Enquiries to: Graham Hughes, Senior Democratic Services Officer at graham.hughes@essex.gov.uk.	
County Divisions affected: Not applicable	

1. Introduction

The Committee has previously been consulted on the development of a Special Educational Needs and Disabilities (SEND) Strategy. This is a further update.

2. Action required

The Committee is asked to consider:

- (i) The attached update; and**
- (ii) Identify any follow-up scrutiny actions**

3. Background

- 3.1 The Committee last discussed SEND services in January 2021 with previous discussions to that in February and July 2020. During this time the Committee were updated on the development of a SEND Strategy.
- 3.2 Alongside these discussions was consideration of issues and actions arising from a Care Quality Commission and Ofsted review of SEND arrangements in Essex.
- 3.3 Links to the meeting papers for the most recent meeting in January 2021 and the minutes are here –

[PAF agenda papers - 14 January 2021](#)

[PAF minutes - 14 January 2021](#)

Continued ...

4. Update and Next Steps

- 4.1 The update is attached in the Appendix. Next steps are as proposed under Action Required.

Expected attendees to support the discussion:

County Councillor Tony Ball, Cabinet Member – Education Excellence, Life-Long Learning and Employability.

Ralph Holloway, Head of SEND Strategy and Innovation

5. List of Appendices

- (i) PowerPoint Briefing Paper: My Life, My Rights – Essex Local Area SEND Strategy 2021;
- (ii) My Life, My Rights – Essex Local Area SEND Strategy 2021 – published October 2021

My Life, My Rights Essex Local Area SEND Strategy 2021

PAF Scrutiny Committee – 10th
November 2021

Methodology

Overview

- A local area strategy that sets out our vision, aims and ambitions for the SEND System in Essex, how we will achieve them and how we will measure our success.
- The strategy includes:
 - Purpose/ Introduction
 - Our Pledge
 - Vision for SEND in Essex
 - The strategy test
 - Actions
 - Outcomes
 - Success measures

Timescales

- **Consultation** March 2019
- **Further discovery work** throughout 2020
- **Draft strategy content** June – Sept '21
- **Design work** September '21
- **Governance** October '21
- **Launch** Late Autumn Term

What do we need to improve?

- Equity: children, young people and their families do not experience equal access to a consistent, high quality range of educational support, health services and specialist provision. We want every child and young person to access the high quality support, services and provision that they need.
- Inclusion and equal access to opportunities: children, young people and their families have told us that they don't always feel included in their communities and that there are not enough opportunities available to them. We want every child and young person to feel included and to have equal access and opportunities as they move through each stage of their life.
- Ambition: outcomes for young people with SEND are not yet good enough. The percentage of 16 and 17 year olds who are NEET (not in employment, education or training) in Essex without SEND is 3.6%. For young people with an EHCP this rises to 8.4% and for young people who had SEN support the figure is 9.6%*. We want the very best outcomes for every child and young person throughout their life.

Our vision is
that every
child and
young person:

- is safe;
- has the best possible health and wellbeing;
- develops their personality, talents and abilities to the full;
- is connected to, and plays an active part in their local community;
- is able to live a full and meaningful life with independence and dignity.

Whatever their age, whatever their circumstances, whatever their unique characteristics and without discrimination

The pledge

- As people who teach, support and care for children and young people, we will respect and fulfil the rights of all children and young people with special educational needs and disability in Essex;
- The best interest of the child or young person will always be our top priority in decisions and actions;
- We will listen to the views, feelings and wishes of children, young people and their families in all matters affecting them and take their views seriously;
- We will step in and take positive action to protect these rights; we will share where things have gone right and we will look at where things have gone wrong and make sure this doesn't happen again.

The five strands of the strategy

- Every child and young person's views, feelings and wishes are always considered and taken seriously in all matters that affect them;
- Every child and young person has the best possible mental health and emotional wellbeing;
- Every child and young person's education & training should develop their personality, talents and abilities to the full;
- Every child and young person is connected to, and plays an active part, in their local community;
- Every child & young person has the education, care & support they need to lead a full & purposeful life with dignity & independence.

My Life, My Rights

Essex Local Area

SEND Strategy 2021



Alfie, one of a group of young explorers who climbed Snowdon to raise money for the Multi-Schools Council in 2021.

Contents page

01.

Section 1
Introduction

02.

Section 2
What do we need to improve in Essex?

03.

Section 3
The strategy vision and test

04.

Section 4
Test questions and golden threads

05.

Section 5
The local area pledge

06.

Section 6
The five strands



Reece, from the Multi-Schools Council, recording the song “With a Little Kindness”. The song will be used as the official soundtrack for the Trauma Perceptive Practice being rolled out across Essex schools.

Page 22 of 69

You can download it for free from any streaming site.



CAPTION HERE

1. Introduction

Our vision for the SEND system is based on the fundamental rights of all children and young people as defined in the United Nations Convention on the Rights of the Child (UNCRC).

All children have the same rights. The rights for children set out in the United Nations Convention have been agreed by almost every country in the world.

Every child and young person's views, feelings and wishes are always considered and taken seriously in all matters that affect them.



My Voice, My Choice

Every child and young person is safe and has the best possible health and wellbeing.



My Health and Wellbeing

Every child and young person's education and training should develop their personality, talents and abilities to the full.



My Progress/My Learning

Every child and young person is connected to, and plays an active part, in their local community.



My Community

Every child and young person has the education, care and support they need to lead a full and purposeful life with dignity and independence.



My Opportunities



Awaiting photo of Leon, winner of the 2021 Multi-Schools Council award for Perseverance

2. What do we need to improve in Essex?

Equity:

We know that children, young people and their families do not experience equal access to a consistent, high quality range of educational support, health services and specialist provision. Families tell us about the 'postcode lottery'. We want to change this. We want every child and young person to access the high quality support, services and provision that they need.

Inclusion & equal access to opportunities:

Children, young people and their families have told us that they don't always feel included in their communities and that there are not enough opportunities available to them. We want to change this. We want every child and young person to feel included and to have equal access and opportunities as they move through each stage of their life.

Ambition:

We know that outcomes for young people with SEND are not yet good enough. The percentage of 16 and 17 year olds who are NEET (not in employment, education or training) in Essex without SEND is 3.6%. For young people with an EHCP this rises to 8.4% and for young people who had SEN support the figure is 9.6%*. We want to change this. We want the very best outcomes for every child and young person throughout their life.

*Figures from December 2020 – February 2021

3. The strategy vision and test

The Vision

Every child and young person is safe, has the best possible health, wellbeing and education and is connected to their community.

In every decision we make...

The Test

Does the decision we're about to make bring us **closer to** or **further away** from our vision?

3. The strategy vision and test

The Vision

Every child and young person is safe, has the best possible health, wellbeing and education and is connected to their community.

The Test

Does this decision bring us **closer to** or **further away** from our vision?

4. Test questions and golden threads

Test question

Will this decision make things more equal?



Equity

Test question

Is this the best we can do?



Ambition

Test question

Will this decision help to make things more inclusive?



Inclusive

Our vision is that every child and young person:



is safe



has the best possible health and wellbeing



develops their personality, talents and abilities to the full



is connected to, and plays an active part in their local community



is able to live a full and meaningful life with independence and dignity

Our vision
applies to all children:



whatever their age



whatever their circumstances



**whatever their unique
characteristics**



and without discrimination

5. The local area pledge

The local area is more than just the local authority. It includes the local authority, clinical commissioning groups (CCGs), public health, NHS England for specialist services, early year's settings, schools and further education providers. This pledge applies to all children and young people, without discrimination, whatever their age, stage, unique characteristics or circumstances.

As people who teach, support and care for children and young people, we will **respect and fulfil the rights** of all children and young people with special educational needs and disability in Essex.

The **best interest of the child or young person** will always be our top priority in decisions and actions.

We will listen to the **views, feelings and wishes** of children, young people and their families in all matters affecting them and take their views seriously.

We will **step in and take positive action** to protect these rights; we will share where things have gone right and we will look at where things have gone wrong and make sure this doesn't happen again.

In this pledge, there are no “ifs and buts” and you will not find the words “wherever possible”.



TJ, winner of the 2021 Multi-Schools Council award for Kindness

"My name is TJ and I have ADHD, I love animals and visiting Colchester zoo - I'm a happy boy and have a heart of gold and I'm always creating new ideas with my toys and love being outside. In the lockdown I was upset that the zoo didn't have enough money so I wanted to help the animals especially the lions. I built a Lego zoo in my front garden and spent every weekend speaking to people about the zoo. I then ran a marathon dressed as a lion and did some litter picking. I raised £12,000 to help all the animals at the zoo. I want to be a zoo keeper when I grow up!"



My Voice, My Choice

Every child and young person's views, feelings and wishes are always considered and taken seriously in all matters that affect them.



Our **Local Area Priorities**



All planning is person centred



Support is planned and delivered in a way that works for the child or young person.



It is balanced to include what is important to the child or young person, as well as what is important for the child or young person.



Person centred planning is the everyday, expected standard.



Choice and control for children and young people

Our **Local Area Priorities**



Children, young people and their families are involved in decision making in all matters that concern them.



Information is accessible to young people and families



Children, young people and families can find what they need, make informed choices and navigate the system easily from the earliest years to early adulthood.



Co-production with children, young people and families



Children, young people and their families are involved in strategic decision making and the co-production of services.

What work is going on & where will you see improvements happening?



As a local area we are working together to:



embed co-production as an expectation



increase the capacity of our SENDIASS service



provide a new and improved Essex Local Offer



improve the system of Personal Budgets and Direct Payments

What work is going on & where will you see improvements happening?



increase the opportunities for children & young people to get involved with strategic co-production through the Multi-Schools Council.



Insert caption here



Sam, winner of the 2021 Multi-Schools Council award for Promoting School Sport



My Health and Wellbeing

**Every child and
young person
has the best
possible mental
health and
emotional wellbeing**



Our **Local Area Priorities**



Early identification and early support



Children and young people's health needs, and importantly their mental health, are identified early and support is put in place at the earliest opportunity.



We do not wait for children to be in crisis before we offer support.



Clear pathways to access support and services



Children, young people and their families understand how to access support, receive good communication and have a positive experience from all services.

Our **Local Area Priorities**



**The right support, from the right people,
at the right time**



Children and young people get the support that makes a difference and helps them make progress towards the outcomes that matter to them.



Wellbeing in all Essex educational settings



The emotional wellbeing of children and young people is part of the life and work of schools and colleges and there is mental health expertise in every school and setting.

What work is going on & where will you see improvements happening?



As a local area we are working together to:



improve the neurodevelopmental pathways and the information available to families on their journey



support all educational settings to understand behaviour and emotional wellbeing (through a programme called Trauma Perceptive Practice or TPP)



train all schools, settings & colleges to provide early support and identifying underlying emotional and mental health needs.



embed mental health expertise in every school & setting, so there is no wrong door for young people when it comes to getting help

What work is going on & where will you see improvements happening?



improve the EWMHS service and the universal offer of early help for mental health and wellbeing.



Awaiting photo of students at Clacton County High, winner of the 2021 Multi-Schools Council award for Preparing for Adulthood

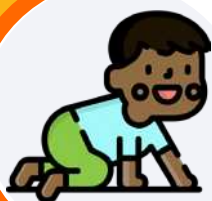


My Progress/My Learning

Every child and young person's education & training should develop their personality, talents and abilities to the full.



Our **Local Area Priorities**



Excellent start in the early years



All children have access to quality inclusive childcare to make an excellent start to their early education, development and learning.



Early identification and early support



Children, young people and their families receive early advice, support and intervention with no need for a formal diagnosis or unnecessary delay.



Effective One planning and SEN support

Our **Local Area Priorities**



Children and young people can attend their local education setting and feel confident that they will be fully included and have their needs met effectively.



Joined up planning and support across education, health and social care



Every service plays their part and children young people and their families experience high quality planning and provision from the most appropriate teams and services.

What work is going on & where will you see improvements happening?



As a local area we are working together to:



introduce an Inclusion Framework (Lives without Labels)



this Framework supports schools to meet the needs of more vulnerable pupils quickly and without the need of a diagnosis or label



increase early interventions such as Talk Boost, Autism Education Trust Training, Precision Teaching, Bright Minds, Bright Moods



agree a standard for inclusion with all Essex schools and colleges (the 'Ordinarily Available Offer')

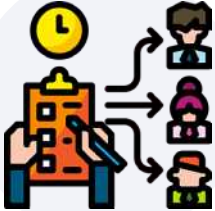
What work is going on & where will you see improvements happening?



introduce a SEN Review toolkit for schools and settings to evaluate and improve their practice and provision



improve the experience of families during an Education, Health and Care Needs Assessments and Annual Reviews



improve the quality of Education, Health & Care Plans (EHCPs) and the way services work together.

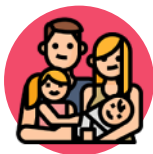


Students at Holland Park, winner of the 2021 Multi-Schools Council awards for Mental Health Awareness, Teacher of the Year and School of the Year.



My Community

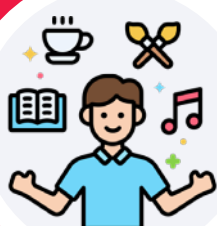
Every child and young person is connected to, and plays an active part, in their local community.



Our **Local Area Priorities**



Excellent universal services



Why? So that children, young people and their families can find and access support that meets their individual needs.



Services will meet people's needs without needing a referral or diagnosis and without being dependent on others.



Inclusive communities and equal opportunities



Why? So that all children, young people & their families can access the places they want to go & the things they want to do.

Our **Local Area Priorities**



This is alongside their friends and families in their local community.



Specialist excellence in Essex



Why? So that children and young people with the most complex needs can be met close to home.



We will ensure this happens in the earliest years, through education an into employment.

What work is going on & where will you see improvements happening?



As a local area we are working together to:



provide a new and improved Short Break Offer to families



support the Headteachers Roundtable for SEND in their drive and commitment for all schools to be equally inclusive



build new specialist provisions to meet the needs of children and young people – for example The Hawthorns



improve therapy services– at the targeted level, specialist and complex level (The Balanced System).

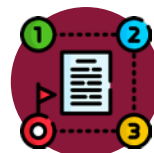


Awaiting photo of students at Clacton County High, winner of the 2021 Multi-Schools Council award for Preparing for Adulthood



My Opportunities

Every child & young person has the education, care & support they need to lead a full & purposeful life with dignity & independence



Our **Local Area Priorities**



Preparing for adulthood from the earliest years



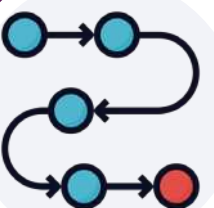
Why? So that children & young people are supported and encouraged to build on their strengths & pursue their ambitions



This is so that children and young people have a direction and purpose beyond education.



High quality transitions



Why? So that children & young people continue to progress at every move & are supported seamlessly by well thought out transitions between services, settings or phases.

Our **Local Area Priorities**



Next steps and employability



Why? So that young people are well prepared for their next steps and education, training and opportunities leads to employability for more young people with SEND



More opportunities beyond age 16



Why? So that there are more (both amount and variation) of opportunities available to young people aged 16 and above so there is something purposeful for everyone.

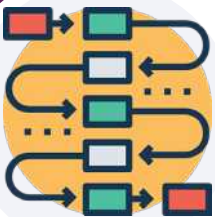


As a local area we are working together to:

What work is going on & where will you see improvements happening?



introduce Vocational Profiling to build on young people's strengths and talents



increase pathways and options, including supported employment schemes and job coaches



develop digital CVs and a virtual employability platform to better match young people with employment opportunities



Joint workings with Anchor institutions to create Inclusive pathways into employment such as the supported internship programme at Mid and South Essex NHS Foundation Trust



hold Inclusive Employers Forums and Reverse Job Fairs



Awaiting photo of students at Market Field School, winner of the 2021 Multi-Schools Council award for Saving the Environment

These principles are designed to support:

The participation of children, young people and their parents/carers in decision making.



My Voice, My Choice

The early identification of children and young people's needs and early intervention to support them.



My Progress/My Learning

Greater choice and control for children, young people and parents/carers over support.



My Voice, My Choice

High quality provision to meet the needs of children and young people with SEND.



My Progress/My Learning

These principles are designed to support:

A focus on inclusive practice and removing barriers to learning.



My Community

Collaboration between education, health and social care services to provide support

Successful preparation for adulthood, including independent living and employment.



My Health and Wellbeing



My Opportunities

Report title: Work Programme	
Report to: People and Families Policy and Scrutiny Committee	
Report author: Graham Hughes, Senior Democratic Services Officer	
Date: 10 November 2021	For: Discussion and identifying any follow-up scrutiny actions
Enquiries to: Graham Hughes, Senior Democratic Services Officer at graham.hughes@essex.gov.uk.	
County Divisions affected: Not applicable	

1. Introduction

- 1.1 The work programme is a standard agenda item. The work programme for the Committee continues to be developed and the current position is outlined below and overleaf.

2. Action required

- 2.1 The Committee is asked to consider this report and issues under consideration in the Appendix and any further development or amendments.

3. Background

- 3.1 The current work programme has been developed further to discussions with portfolio holders at two induction sessions in the summer, subsequent discussions between the Chairman and Vice Chairmen and Cabinet Members and senior officers, and other issues highlighted during formal meetings of the Committee.

4. Update and Next Steps

- 4.1 See Appendix.

5. Appendix

- 5.1 current work programme.

APPENDIX

People and Families Policy and Scrutiny Committee

Date/timing	Issue/Topic	Focus, approach and other comments
10 November 2021	SEND strategy	Draft strategy ahead of wider consultation
10 November 2021	Safeguarding - Children	Introductory private briefing on legislative background and governance structures ahead of formal scrutiny session
9 December 2021 - TBC	Safeguarding - Adults	See above on Safeguarding Children which also applies to the Adults Board.
TBC	Safeguarding – Children	Children's and Adults Safeguarding Boards present their annual reports to the Board each Autumn. In addition to the report of the activities and focus of the Boards, there is usually an in-depth review of one or two operational issues - to be identified so that appropriate supporting officers can be asked to attend.
January 2022 - TBC	Early Years and Childcare Strategy	A delivery plan/timetable and significant milestones to include a brief executive overview of a 5-year plan and key objectives
First quarter 2022 – date TBC	Adult Social Care	Update on trends and capacity to include work with market providers to manage an orderly reduction in capacity in the residential market.
Spring 2022	Home Education and Children Missing Education	Further update once a response was received to ECC's submission to the Education Select Committee and Government

Continued 1/2

Continued 2/2

Further issues under consideration

Date/timing	Issue/Topic	Focus/other comments
Further planning and timing TBC	Working Families Programme	Strategy to go to Full Council in October – during September the Cabinet Member invited comments via email. Any further work TBC
Further planning and timing TBC	Drug Gangs, knife crime and County Lines	Further follow-up on recommendations from the PAF Task and Finish Group. Some subject matter may lend itself to being combined with other scheduled agenda items (e.g. Home Education/Children missing education, Safeguarding)
Further planning and timing TBC	Children in care being placed outside Essex	Information on the trend was requested as a result of discussions at September meeting of PAF. Any further follow-up TBC.
Further planning and timing TBC	Backlog in Courts and Justice System	Impact on Youth Offending Team, fostering and adoption. Further information was requested as a result of discussions at September meeting of PAF. Any further follow-up TBC
Further planning and timing TBC	Education - academisation	Academisation impact, role of Regional Schools Commissioner and the role ECC has in supporting general standards.

Possible Task and Finish Group reviews – to be confirmed

Date/timing	Issue/Topic	Focus/other comments
TBC	Impact of the pandemic on Essex County Council	Cross portfolio/committee - Format TBC - after initial PAF session on 9 September.
TBC	Libraries Strategy	Cross portfolio/committee. Incorporates other functions for libraries including levelling up, wider community role and helping with school readiness, literacy, interviews and employability etc.
TBC	Suicide	Approach and structure of review to be confirmed.
TBC	100 Day Plan/Organisation Strategy	Cross-cutting. Possible approach is to establish a cross-committee joint scrutiny review. May incorporate aspects of levelling up agenda or these may be separate scrutiny subjects.