

My Life, My Rights

Essex Local Area

SEND Strategy 2021



Alfie, one of a group of young explorers who climbed Snowdon to raise money for the Multi-Schools Council in 2021.

Contents page

01.

Section 1
Introduction

02.

Section 2
What do we need to improve in Essex?

03.

Section 3
The strategy vision and test

04.

Section 4
Test questions and golden threads

05.

Section 5
The local area pledge

06.

Section 6
The five strands



Reece, from the Multi-Schools Council, recording the song "With a Little Kindness". The song will be used as the official soundtrack for the Trauma Perceptive Practice being rolled out across Essex schools.

You can download it for free from any streaming site.



CAPTION HERE

1. Introduction

Our vision for the SEND system is based on the fundamental rights of all children and young people as defined in the United Nations Convention on the Rights of the Child (UNCRC).

All children have the same rights. The rights for children set out in the United Nations Convention have been agreed by almost every country in the world.

Every child and young person's views, feelings and wishes are always considered and taken seriously in all matters that affect them.



My Voice, My Choice

Every child and young person is safe and has the best possible health and wellbeing.



My Health and Wellbeing

Every child and young person's education and training should develop their personality, talents and abilities to the full.



My Progress/My Learning

Every child and young person is connected to, and plays an active part, in their local community.



My Community

Every child and young person has the education, care and support they need to lead a full and purposeful life with dignity and independence.



My Opportunities



Awaiting photo of Leon, winner of the 2021 Multi-Schools Council award for Perseverance

2. What do we need to improve in Essex?

Equity:

We know that children, young people and their families do not experience equal access to a consistent, high quality range of educational support, health services and specialist provision. Families tell us about the 'postcode lottery'. We want to change this. We want every child and young person to access the high quality support, services and provision that they need.

Inclusion & equal access to opportunities:

Children, young people and their families have told us that they don't always feel included in their communities and that there are not enough opportunities available to them. We want to change this. We want every child and young person to feel included and to have equal access and opportunities as they move through each stage of their life.

Ambition:

We know that outcomes for young people with SEND are not yet good enough. The percentage of 16 and 17 year olds who are NEET (not in employment, education or training) in Essex without SEND is 3.6%. For young people with an EHCP this rises to 8.4% and for young people who had SEN support the figure is 9.6%*. We want to change this. We want the very best outcomes for every child and young person throughout their life.

*Figures from December 2020 – February 2021

3. The strategy vision and test

The Vision

Every child and young person is safe, has the best possible health, wellbeing and education and is connected to their community.

In every decision we make...

The Test

Does the decision we're about to make bring us **closer to** or **further away** from our vision?

3. The strategy vision and test

The Vision

Every child and young person is safe, has the best possible health, wellbeing and education and is connected to their community.

The Test

Does this decision bring us **closer to** or **further away** from our vision?

4. Test questions and golden threads

Test question

Will this decision make things more equal?



Equity

Test question

Is this the best we can do?



Ambition

Test question

Will this decision help to make things more inclusive?



Inclusive

Our vision is that every child and young person:



is safe



has the best possible health and wellbeing



develops their personality, talents and abilities to the full

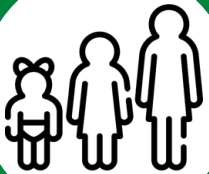


is connected to, and plays an active part in their local community



is able to live a full and meaningful life with independence and dignity

Our vision
applies to all children:



whatever their age



whatever their circumstances



**whatever their unique
characteristics**



and without discrimination

5. The local area pledge

The local area is more than just the local authority. It includes the local authority, clinical commissioning groups (CCGs), public health, NHS England for specialist services, early year's settings, schools and further education providers. This pledge applies to all children and young people, without discrimination, whatever their age, stage, unique characteristics or circumstances.

As people who teach, support and care for children and young people, we will **respect and fulfil the rights** of all children and young people with special educational needs and disability in Essex.

The **best interest of the child or young person** will always be our top priority in decisions and actions.

We will listen to the **views, feelings and wishes** of children, young people and their families in all matters affecting them and take their views seriously.

We will **step in and take positive action** to protect these rights; we will share where things have gone right and we will look at where things have gone wrong and make sure this doesn't happen again.

In this pledge, there are no “ifs and buts” and you will not find the words “wherever possible”.



TJ, winner of the 2021 Multi-Schools Council award for Kindness

"My name is TJ and I have ADHD, I love animals and visiting Colchester zoo – I'm a happy boy and have a heart of gold and I'm always creating new ideas with my toys and love being outside. In the lockdown I was upset that the zoo didn't have enough money so I wanted to help the animals especially the lions. I built a Lego zoo in my front garden and spent every weekend speaking to people about the zoo. I then ran a marathon dressed as a lion and did some litter picking. I raised £12,000 to help all the animals at the zoo. I want to be a zoo keeper when I grow up!"



My Voice, My Choice

Every child and young person's views, feelings and wishes are always considered and taken seriously in all matters that affect them.



Our **Local Area Priorities**



All planning is person centred



Support is planned and delivered in a way that works for the child or young person.



It is balanced to include what is important to the child or young person, as well as what is important for the child or young person.



Person centred planning is the everyday, expected standard.



Choice and control for children and young people

Our **Local Area Priorities**



Children, young people and their families are involved in decision making in all matters that concern them.



Information is accessible to young people and families



Children, young people and families can find what they need, make informed choices and navigate the system easily from the earliest years to early adulthood.



Co-production with children, young people and families



Children, young people and their families are involved in strategic decision making and the co-production of services.

What work is going on & where will you see improvements happening?



As a local area we are working together to:



embed co-production as an expectation



increase the capacity of our SENDIASS service



provide a new and improved Essex Local Offer



improve the system of Personal Budgets and Direct Payments

What work is going on & where will you see improvements happening?



increase the opportunities for children & young people to get involved with strategic co-production through the Multi-Schools Council.



Insert caption here

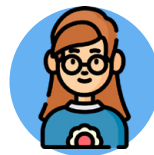


Sam, winner of the 2021 Multi-Schools Council award for Promoting School Sport



My Health and Wellbeing

**Every child and
young person
has the best
possible mental
health and
emotional wellbeing**



Our **Local Area Priorities**



Early identification and early support



Children and young people's health needs, and importantly their mental health, are identified early and support is put in place at the earliest opportunity.



We do not wait for children to be in crisis before we offer support.



Clear pathways to access support and services



Children, young people and their families understand how to access support, receive good communication and have a positive experience from all services.

Our **Local Area Priorities**



**The right support, from the right people,
at the right time**



Children and young people get the support that makes a difference and helps them make progress towards the outcomes that matter to them.



Wellbeing in all Essex educational settings



The emotional wellbeing of children and young people is part of the life and work of schools and colleges and there is mental health expertise in every school and setting.

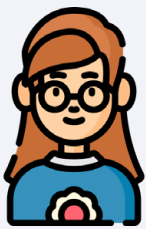
What work is going on & where will you see improvements happening?



As a local area we are working together to:



improve the neurodevelopmental pathways and the information available to families on their journey



support all educational settings to understand behaviour and emotional wellbeing (through a programme called Trauma Perceptive Practice or TPP)



train all schools, settings & colleges to provide early support and identifying underlying emotional and mental health needs.



embed mental health expertise in every school & setting, so there is no wrong door for young people when it comes to getting help

What work is going on & where will you see improvements happening?



improve the EWMHS service and the universal offer of early help for mental health and wellbeing.



Awaiting photo of students at Clacton County High, winner of the 2021 Multi-Schools Council award for Preparing for Adulthood



My Progress/My Learning

Every child and young person's education & training should develop their personality, talents and abilities to the full.



Our **Local Area Priorities**



Excellent start in the early years



All children have access to quality inclusive childcare to make an excellent start to their early education, development and learning.



Early identification and early support

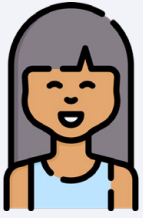


Children, young people and their families receive early advice, support and intervention with no need for a formal diagnosis or unnecessary delay.



Effective One planning and SEN support

Our **Local Area Priorities**



Children and young people can attend their local education setting and feel confident that they will be fully included and have their needs met effectively.



Joined up planning and support across education, health and social care



Every service plays their part and children young people and their families experience high quality planning and provision from the most appropriate teams and services.

What work is going on & where will you see improvements happening?



As a local area we are working together to:



introduce an Inclusion Framework (Lives without Labels)



this Framework supports schools to meet the needs of more vulnerable pupils quickly and without the need of a diagnosis or label



increase early interventions such as Talk Boost, Autism Education Trust Training, Precision Teaching, Bright Minds, Bright Moods



agree a standard for inclusion with all Essex schools and colleges (the 'Ordinarily Available Offer')

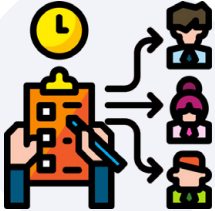
What work is going on & where will you see improvements happening?



introduce a SEN Review toolkit for schools and settings to evaluate and improve their practice and provision



improve the experience of families during an Education, Health and Care Needs Assessments and Annual Reviews



improve the quality of Education, Health & Care Plans (EHCPs) and the way services work together.

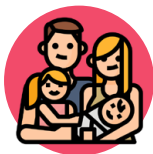


Students at Holland Park, winner of the 2021 Multi-Schools Council awards for Mental Health Awareness, Teacher of the Year and School of the Year.



My Community

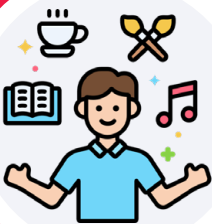
Every child and young person is connected to, and plays an active part, in their local community.



Our **Local Area Priorities**



Excellent universal services



Why? So that children, young people and their families can find and access support that meets their individual needs.



Services will meet people's needs without needing a referral or diagnosis and without being dependent on others.



Inclusive communities and equal opportunities



Why? So that all children, young people & their families can access the places they want to go & the things they want to do.

Our **Local Area Priorities**



This is alongside their friends and families in their local community.



Specialist excellence in Essex



Why? So that children and young people with the most complex needs can be met close to home.



We will ensure this happens in the earliest years, through education and into employment.

What work is going on & where will you see improvements happening?



As a local area we are working together to:



provide a new and improved Short Break Offer to families



support the Headteachers Roundtable for SEND in their drive and commitment for all schools to be equally inclusive



build new specialist provisions to meet the needs of children and young people – for example The Hawthorns



improve therapy services– at the targeted level, specialist and complex level (The Balanced System).



Awaiting photo of students at Clacton County High, winner of the 2021 Multi-Schools Council award for Preparing for Adulthood



My Opportunities

**Every child & young
person has the
education, care &
support they need to
lead a full &
purposeful life with
dignity &
independence**



Our **Local Area Priorities**



Preparing for adulthood from the earliest years



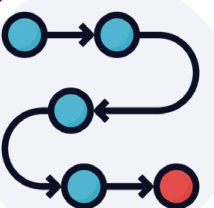
Why? So that children & young people are supported and encouraged to build on their strengths & pursue their ambitions



This is so that children and young people have a direction and purpose beyond education.



High quality transitions



Why? So that children & young people continue to progress at every move & are supported seamlessly by well thought out transitions between services, settings or phases.

Our **Local Area Priorities**



Next steps and employability



Why? So that young people are well prepared for their next steps and education, training and opportunities leads to employability for more young people with SEND



More opportunities beyond age 16



Why? So that there are more (both amount and variation) of opportunities available to young people aged 16 and above so there is something purposeful for everyone.

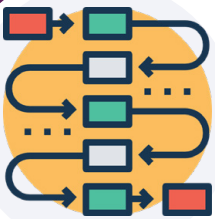


As a local area we are working together to:

What work is going on & where will you see improvements happening?



introduce Vocational Profiling to build on young people's strengths and talents



increase pathways and options, including supported employment schemes and job coaches



develop digital CVs and a virtual employability platform to better match young people with employment opportunities



Joint workings with Anchor institutions to create Inclusive pathways into employment such as the supported internship programme at Mid and South Essex NHS Foundation Trust



hold Inclusive Employers Forums and Reverse Job Fairs



Awaiting photo of students at Market Field School, winner of the 2021 Multi-Schools Council award for Saving the Environment

These principles are designed to support:

The participation of children, young people and their parents/carers in decision making.



My Voice, My Choice

The early identification of children and young people's needs and early intervention to support them.



My Progress/My Learning

Greater choice and control for children, young people and parents/carers over support.



My Voice, My Choice

High quality provision to meet the needs of children and young people with SEND.



My Progress/My Learning

These principles are designed to support:

A focus on inclusive practice and removing barriers to learning.



My Community

Collaboration between education, health and social care services to provide support

Successful preparation for adulthood, including independent living and employment.



My Health and Wellbeing



My Opportunities