



Commissioning Support
for London

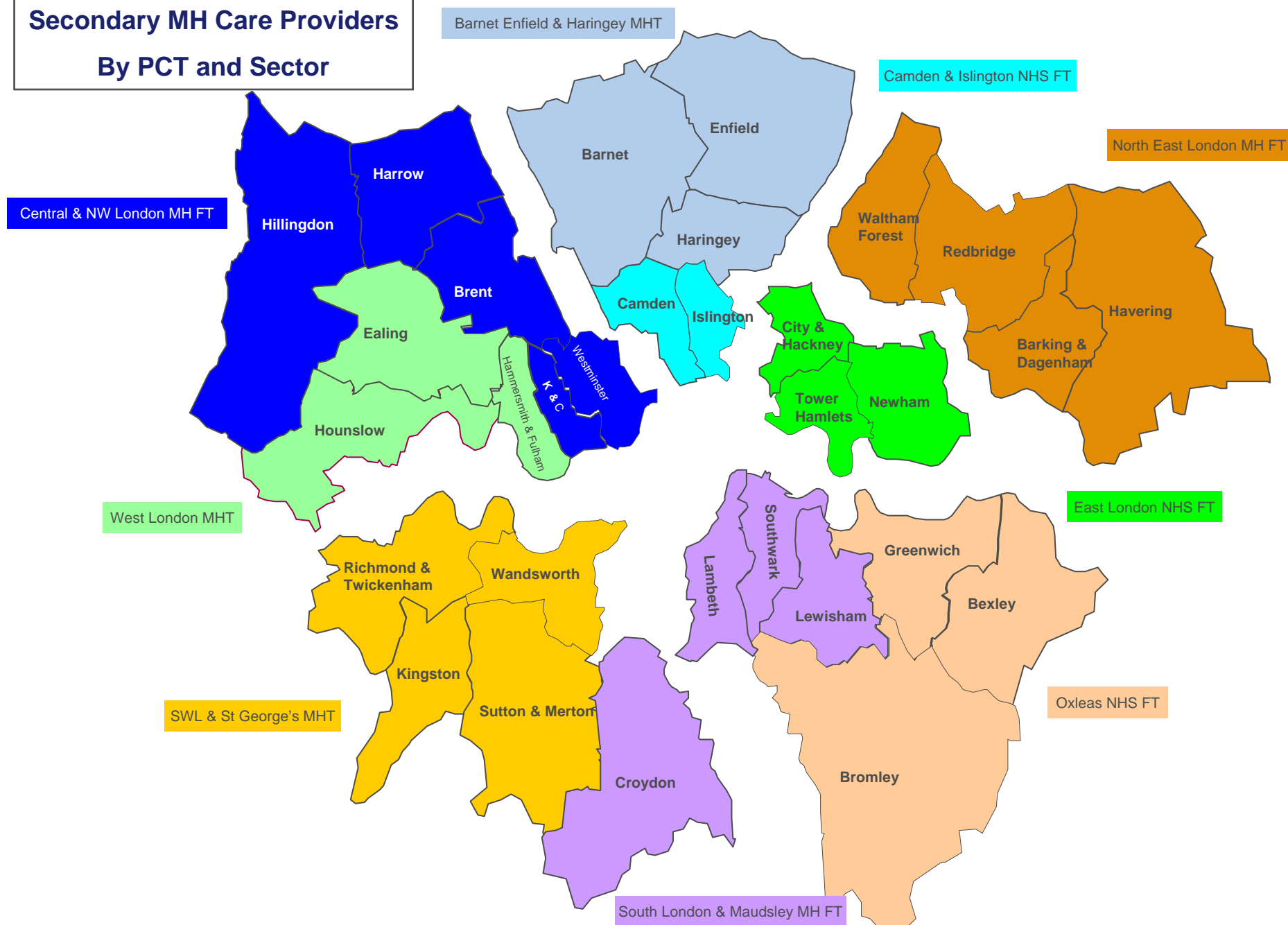
Implementing The National Dementia Strategy in London

David Jobbins
Assistant Director
for Mental Health

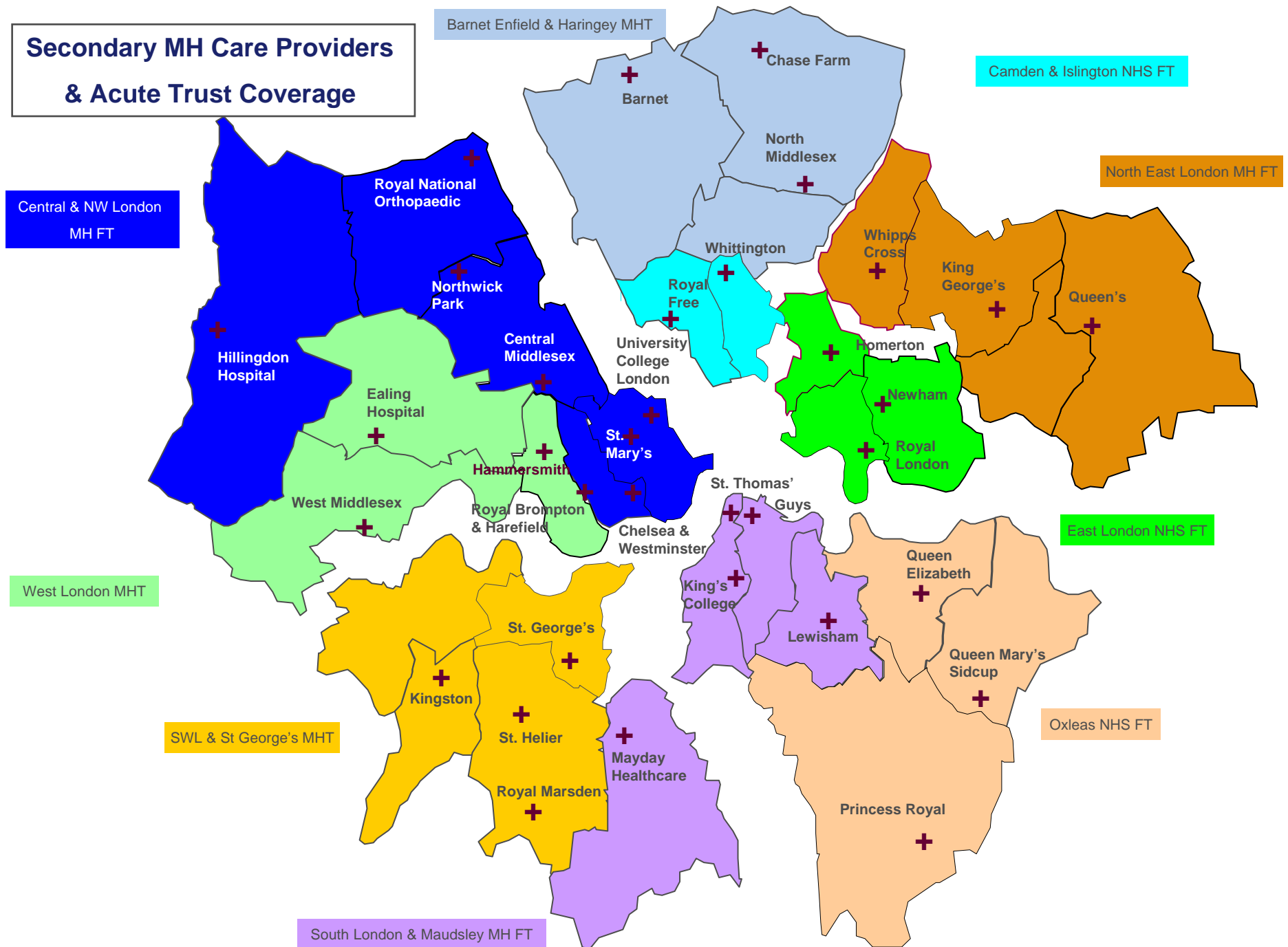
Commissioning Support for London

Providing clinical and business support to London's NHS

Secondary MH Care Providers By PCT and Sector

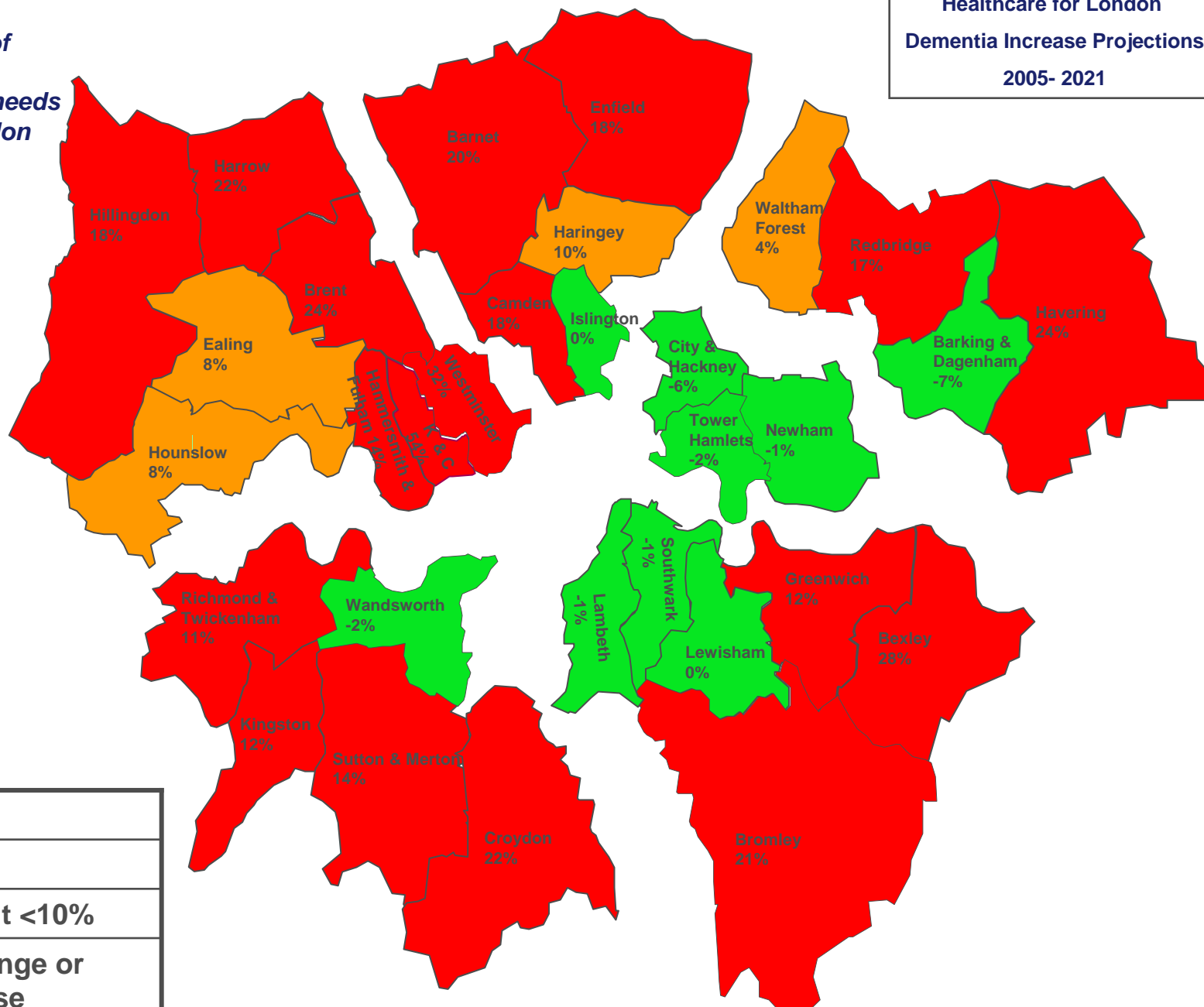


Secondary MH Care Providers & Acute Trust Coverage



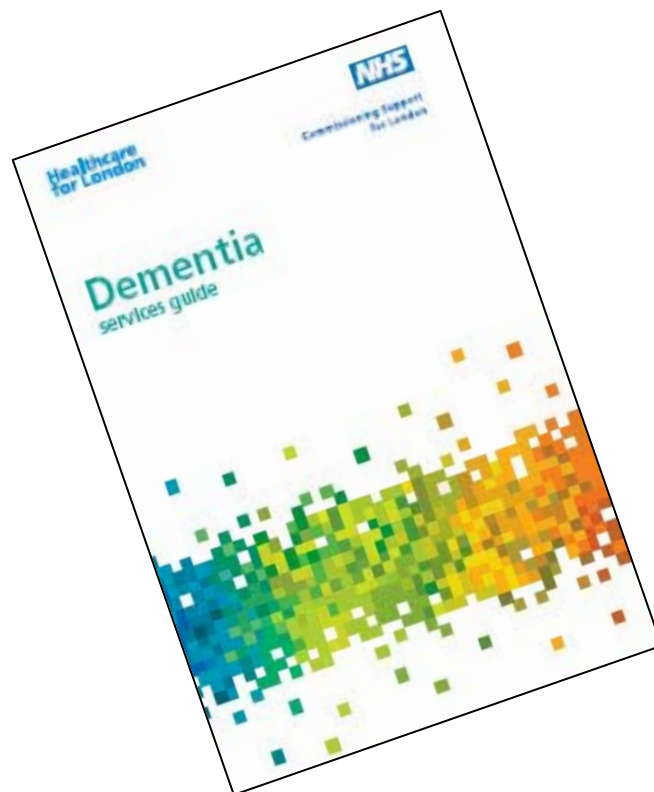
*The scale of
changing
dementia care needs
across London*

Healthcare for London
Dementia Increase Projections
2005- 2021

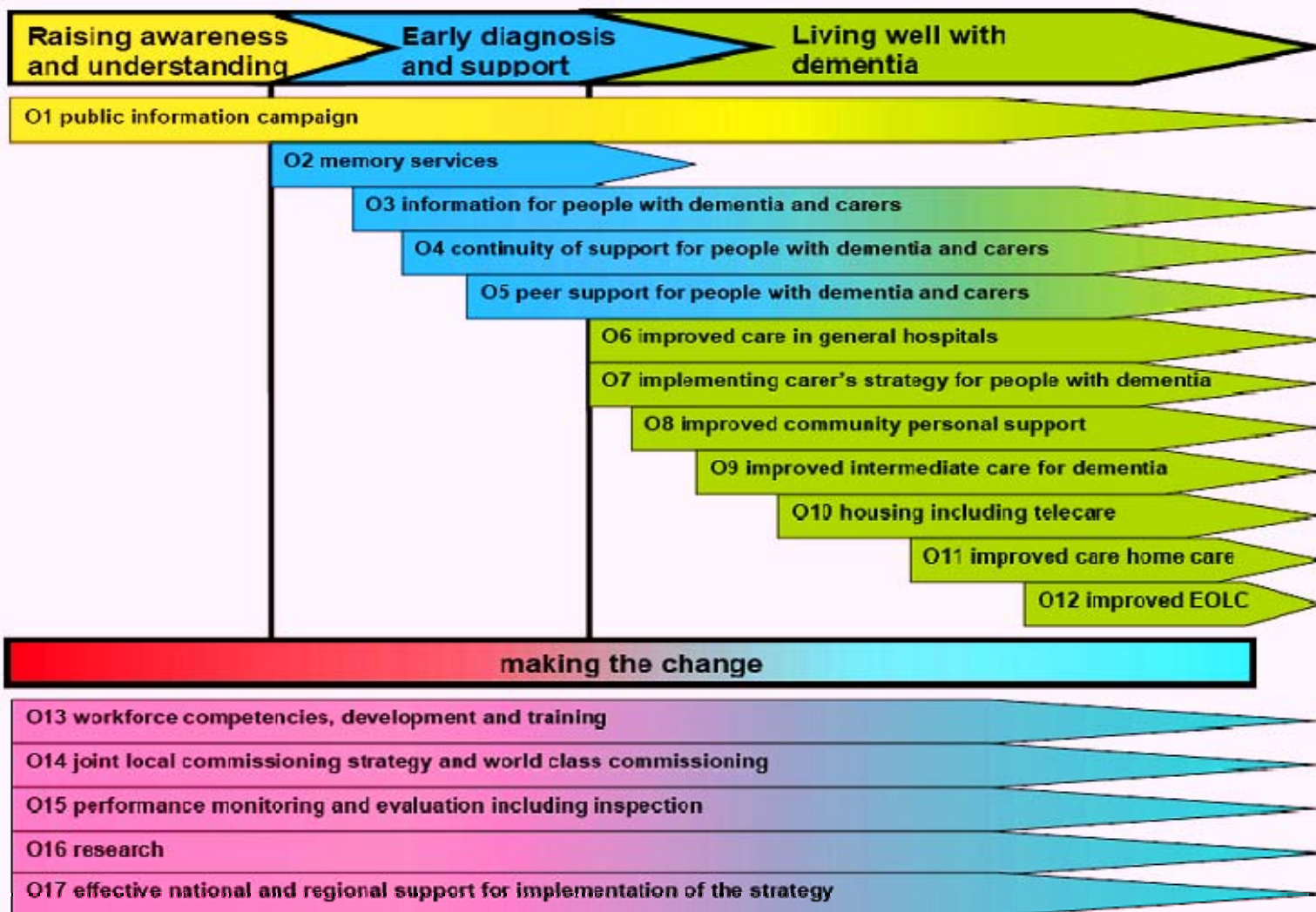


KEY	
	>10%
	>1% but <10%
	No change or decrease

Working to implement the 17 Objectives of the *Dementia services guide* across London



Available at <http://www.healthcareforlondon.nhs.uk/project-documentation-7>



HfL Dementia Services Guide - Priorities for the First Year (March 2010 - March 2011)

- **Raising awareness in general public and care professionals about dementia**
- **Developing memory services**
- **Improving social inclusion and community based support for people living with dementia**
- **Improving information and support for carers**
- **Promoting and developing the use of the general hospital care pathway for dementia**
- **Improving training in dementia care for care professionals**
- **Promoting and developing the integrated care pathway**
- **Improving care home care and reducing the inappropriate use of anti-psychotic medication**
- **Improving use of telecare support for people living with dementia**

Partnership in Delivery

London Region - Department of Health

Ian Winter - Deputy Regional Director

&

Commissioning Support For London

Supporting the 31 London PCTs to
become world class commissioners and
to deliver the Healthcare for London
vision

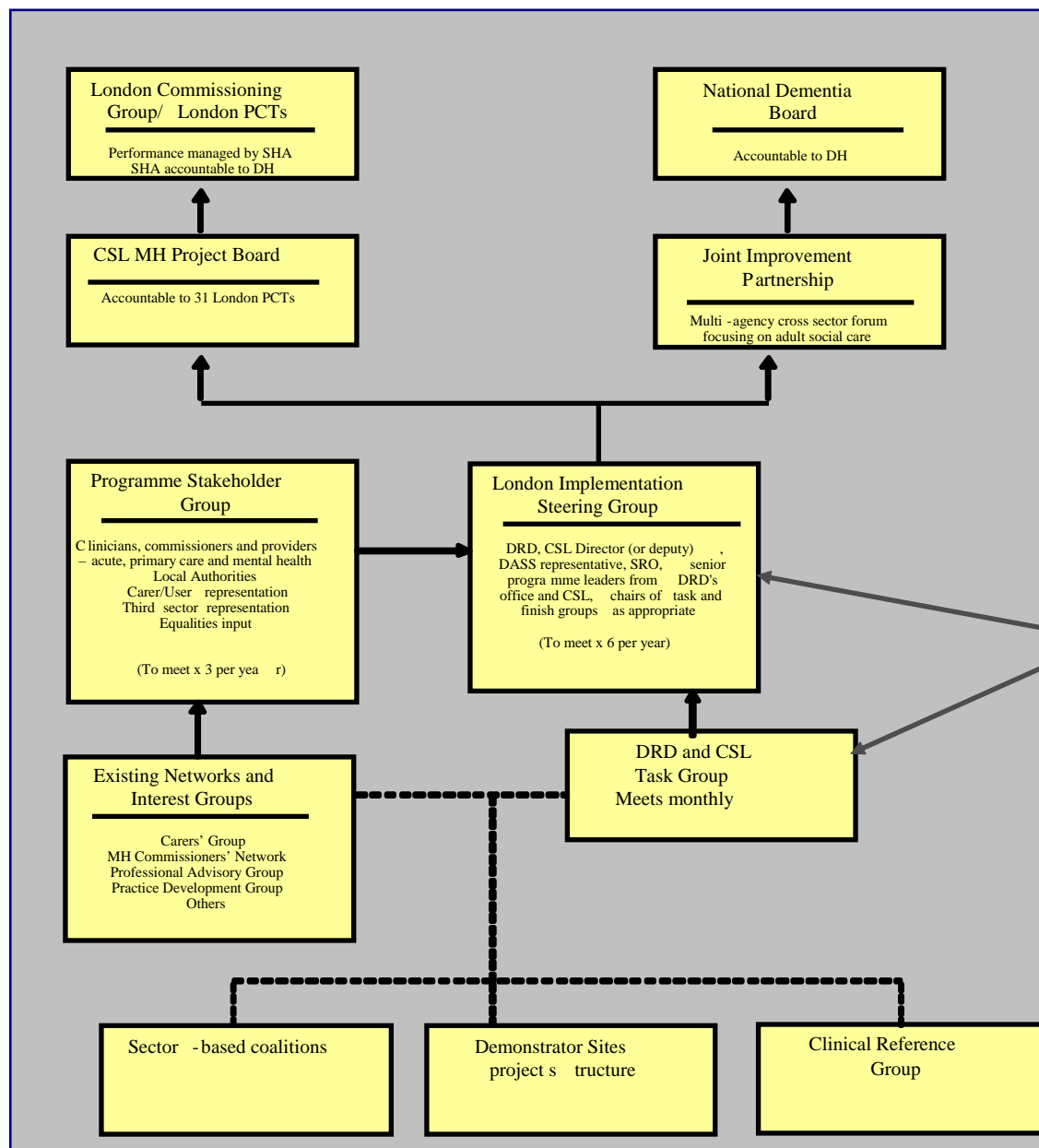
Providing Leadership for Implementation

Implementation Steering Group

London Region DH Social Care and Partnerships
Commissioning Support for London
PCT Chief Executive Representation
ADASS Lead on National Dementia Strategy

Implementation Task Group

London Region DH Social Care and Partnerships
Commissioning Support for London
Alzheimer's Society
London Regional Carers Group Representative
London Councils Representative

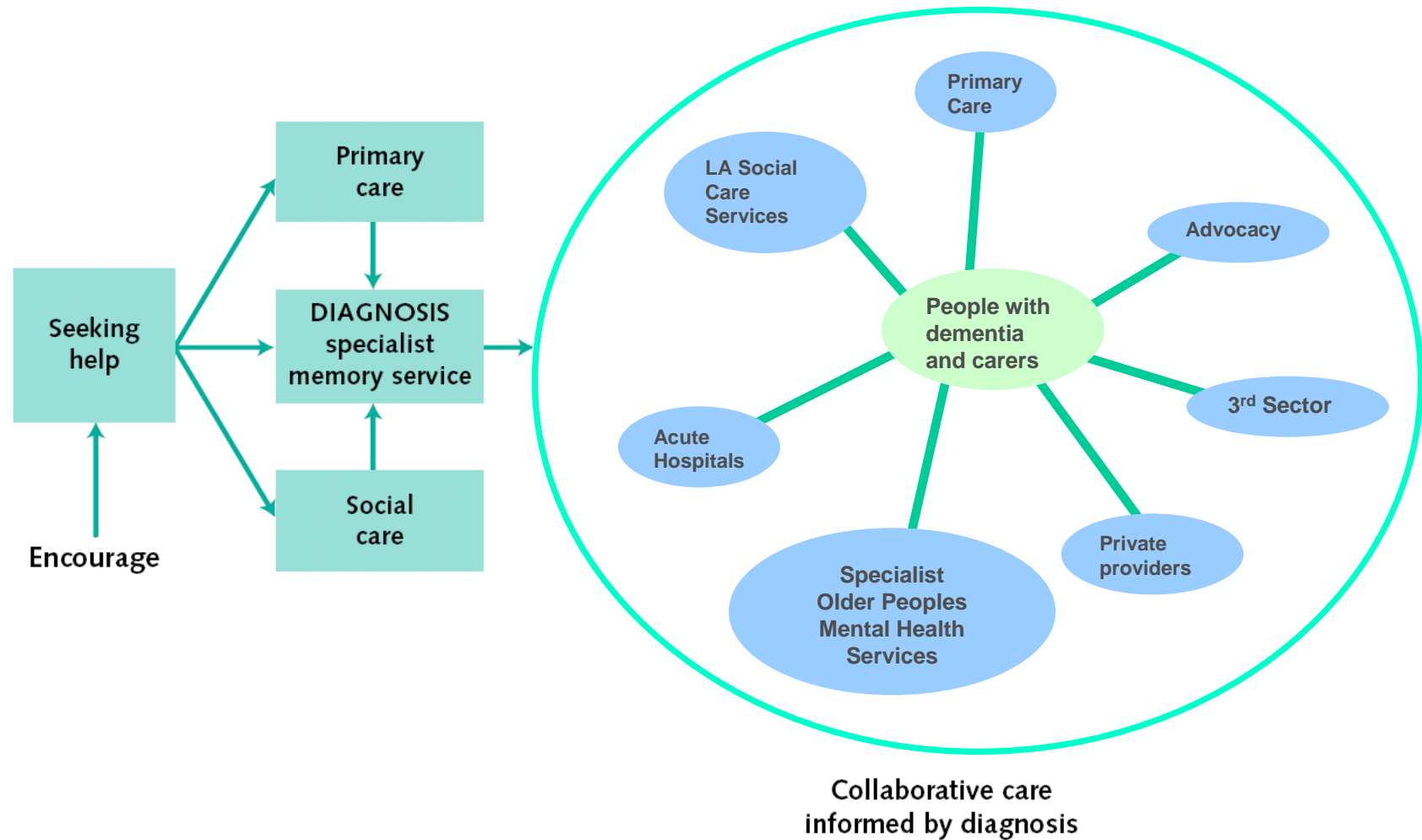


Co-ordinating the implementation across London

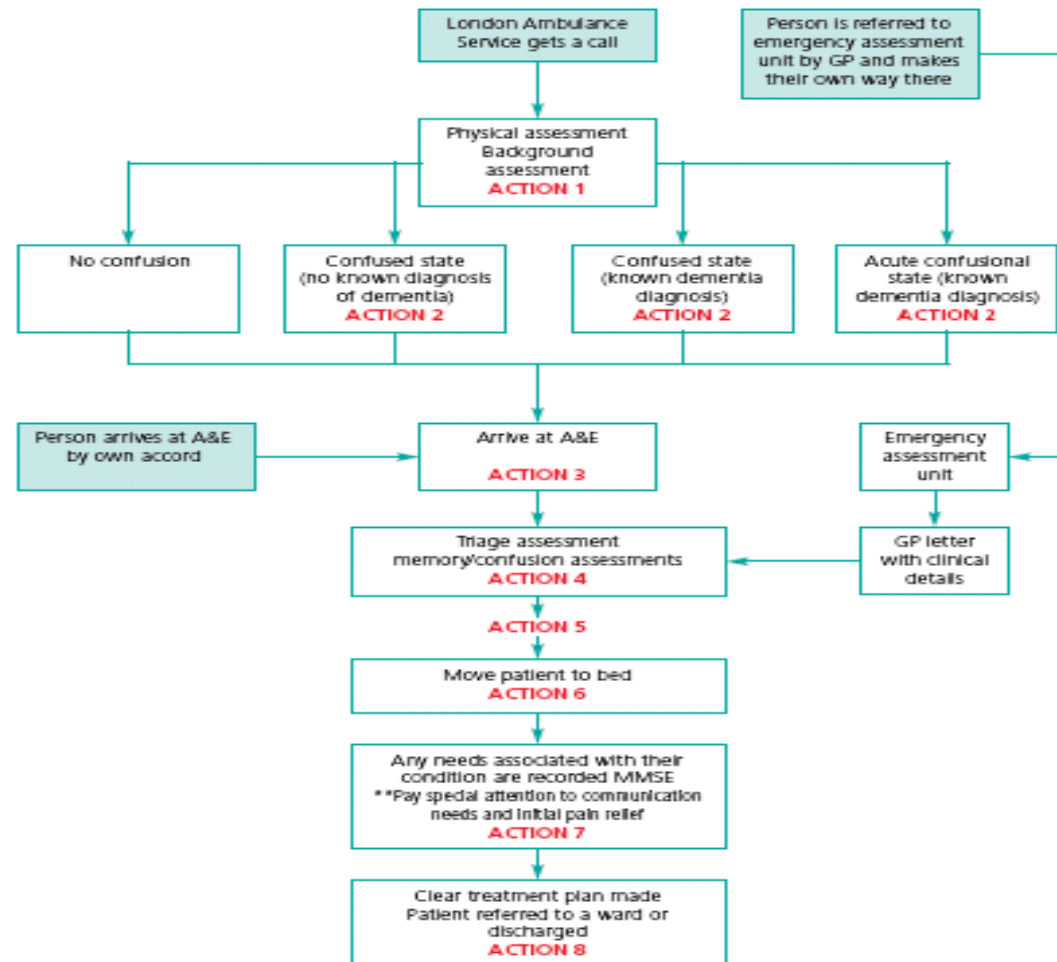
DH Regional Dementia Lead
Lesley Carter, DH

Senior Project Officer for
Mental Health in Later Life
David Truswell, CSL

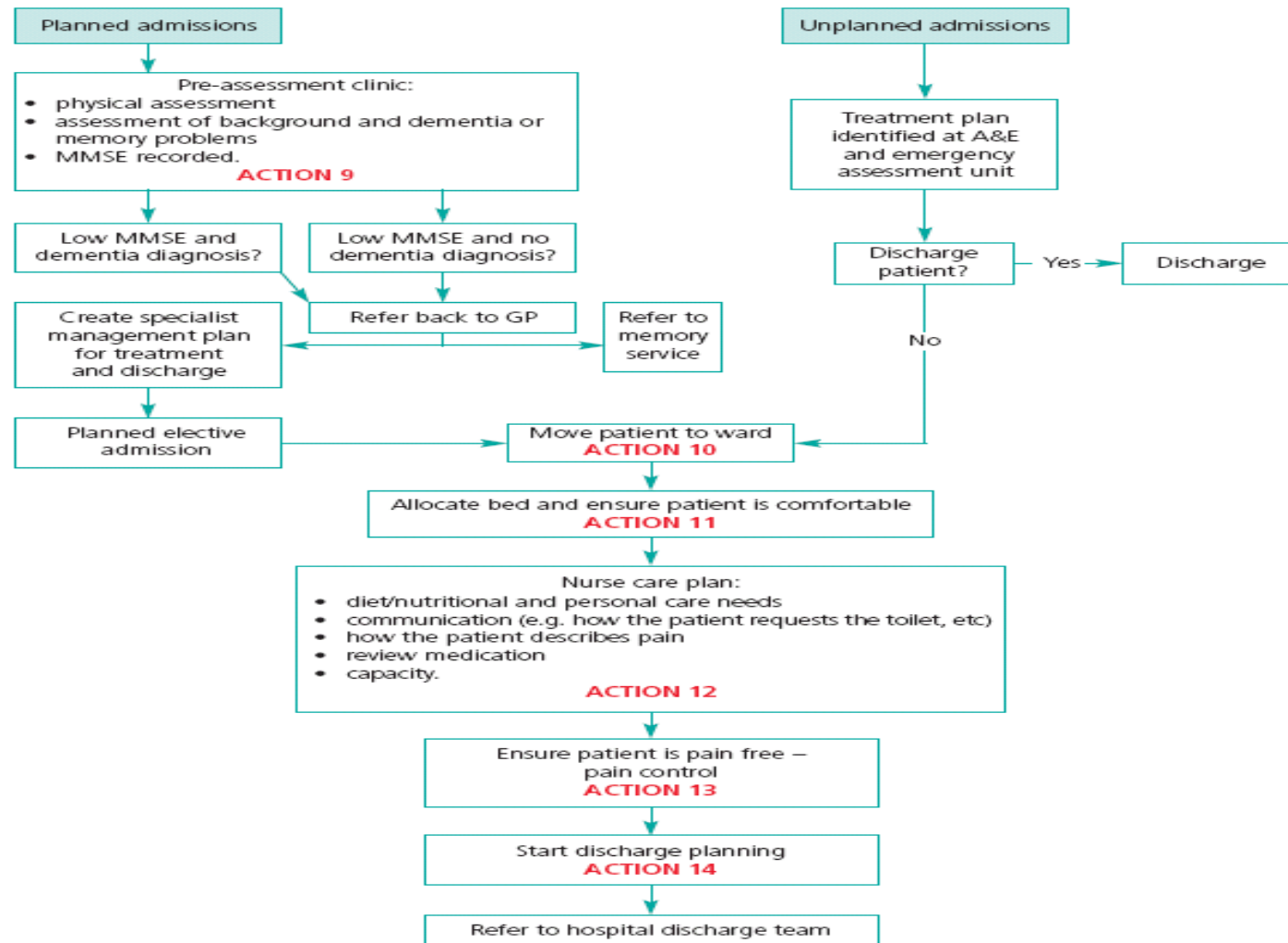
Healthcare for London *Dementia services guide* - the memory service is the gateway to dementia services



The general hospital pathway 1 – the first stages of an unplanned admission



The general hospital pathway 2 – care on the general ward



The Story So Far.....

Dissemination of HFL service guide and associated care pathways to localities

Completion of a baseline review of stakeholders implementation of strategy objectives (national deadline 31st March) & ensuring each locality is developing an action plan

Establishing six demonstrator sites to provide the evidence base for the dementia advisor role and structured peer support networks

Memory Services Baseline Audit tool (draft out to consultation)

Resource Handbook for Commissioners on Dementia and BMER communities (draft being finalised)

Including dementia indicators in regional CQUIN indicators for mental health and acute trusts.

Baseline review of commissioning intentions

- All PCTs in London asked to assess themselves against 16 Standards created from the National Dementia Strategy, the Dementia Services Guide and the National Indicator Set in an on-line survey and submit their current dementia plans
- Interim report due by end of March 2010
- Early indications show a very mixed picture across the capital.
- Some boroughs identify particular areas of good practice which we will be following up to disseminate more widely
- Commissioning of dementia services is often fragmented
- Some boroughs are only at the very early stages of planning while others have comprehensive plans closely based on the National Guide and the HfL recommendations
- The Implementation Task Group will focusing support on the least developed boroughs but using best practice examples to drive improvements

London National Dementia Strategy Demonstrator Sites

Croydon

Dementia Advisor

Enfield

Dementia Adviser

Hackney

Peer Support

Kingston upon Thames

Dementia Adviser

Lambeth / Southwark

Peer Support

Newham

Peer Support

Further work in progress.....

- Refining the economic case for improving dementia services
- Working with CSL Mental Health Sector Leads to develop a sector delivery infrastructure with commissioners for implementing dementia strategy
- Memory service commissioning events
- Promotional events on using the HfL guide to various audiences (acute care, prison health care, BME communities)
- Briefing for Commissioners on the use of telecare in supporting people with dementia in the community

Any Questions?



Providing clinical and business support to London's NHS

Contact Details for London Dementia Implementation Leads

David Truswell

Senior Project Officer for Mental Health In Later Life, CSL

David.Truswell@csl.nhs.uk

Direct Line: 0208 433 6868 Mobile: 0779 258 4253

Lesley Carter

DH Regional Dementia Lead

Lesley.carter@dh.gsi.gov.uk