



Appendix 1: August 2015

Contents

Page

- 1 Cover
- 2 Contents
- 3 Performance summary

We will identify the risks to our communities and work in partnership with them to manage the risk, to reduce its likelihood or its impact on our communities

- 4 Number of Incidents attended in Essex
- 5 Number of people killed or seriously injured in RTCs
- 6 Rate of Accidental Dwelling Fires per 10,000 dwellings
- 7 Rate of casualties (fatal and non-fatal) resulting from fires per 100,000 population
- 8 Total Essex workplace premises risk score

We will provide a resilient, timely, safe and effective response when risks become incidents

- 9 Call to alert in 90 Seconds
- 10 Wholetime Mobilise - Time of station alert to proceeding - % within 2 minutes
- 11 Retained Mobilise - Time of station alert to proceeding - % within 6 minutes
- 12 Rate of Accidents per 100,000 employees

We will use our resources flexibly, efficiently and effectively, reducing the cost of the Service to match the funding available

- 13 Total appliance availability

We will ensure our people are involved, engaged and empowered to deliver excellence

- 14 Average days/shifts lost to sickness absence per person per year
- 15 Percentage of staff who received an appraisal in the past 12 months

Performance is colour coded throughout this report using this system

	> 10% better than target
	0-10% better than target
	90-100% of target
	<90% of target

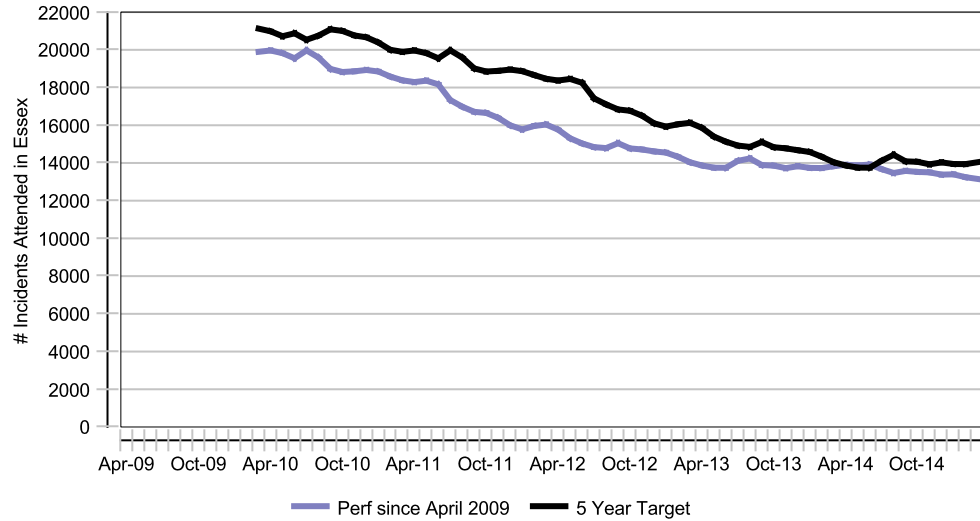
Performance summary

	Performance against target	Performance against previous year	Performance against Family Group
Number of Incidents attended in Essex			
Number of people killed or seriously injured in RTCs			
Rate of Accidental Dwelling Fires per 10,000 dwellings			
Rate of casualties (fatal and non-fatal) resulting from fires per 100,000 population			
Total Essex workplace premises risk score			
Call to alert in 90 Seconds			
Wholetime Mobilise - Time of station alert to proceeding - % within 2 minutes			
Retained Mobilise - Time of station alert to proceeding - % within 6 minutes			
Rate of Accidents per 100,000 employees			
Total appliance availability			
Average days/shifts lost to sickness absence per person per year			
Percentage of staff who received an appraisal in the past 12 months			

Number of Incidents attended in Essex

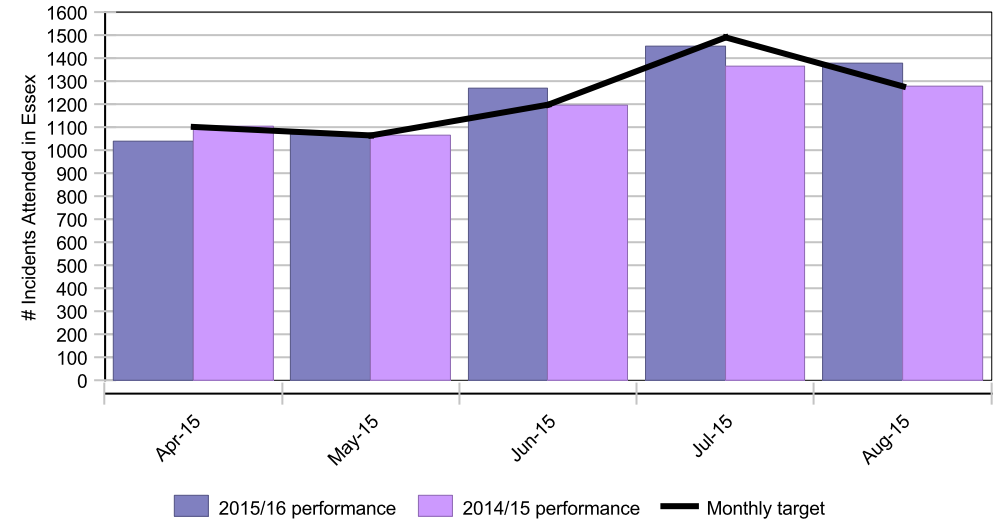
Moving Year (Aug-15)		
Actual	13,351	
Previous Year	13,470	Performance is 0.9% better than previous year
Target	13,619	Performance is 2.0% better than target

Performance relative to 5 year target



Performance Overview

Monthly performance breakdown



Strategic Dashboard Commentary

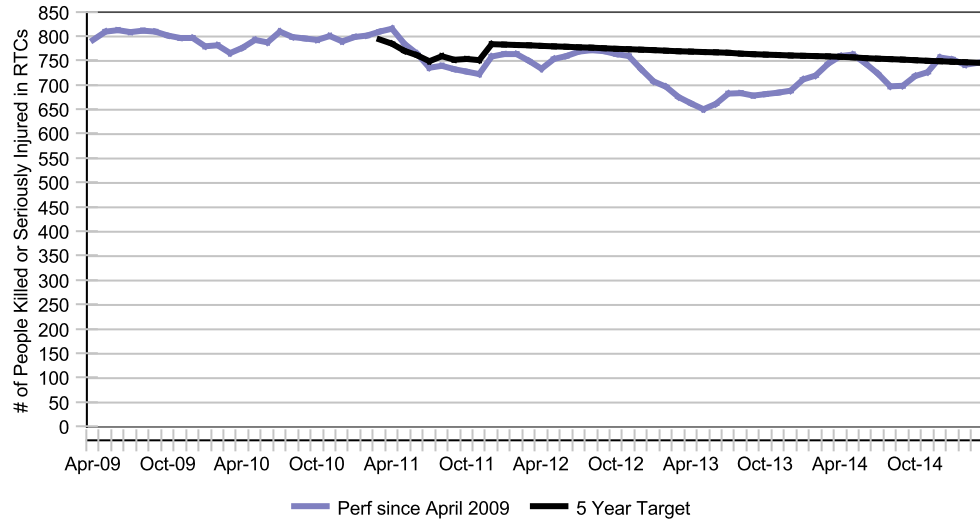
Action Plan

Number of people killed or seriously injured in RTCs

Moving Year (Aug-15)

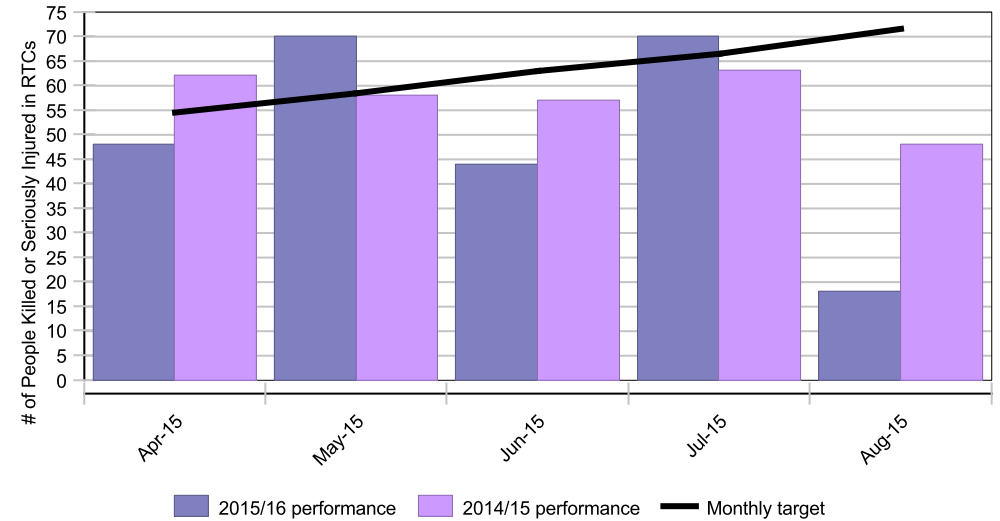
Actual	708	
Previous Year	698	Performance is 1.4% worse than previous year
Target	741	Performance is 4.5% better than target

Performance relative to 5 year target



Performance Overview

Monthly performance breakdown



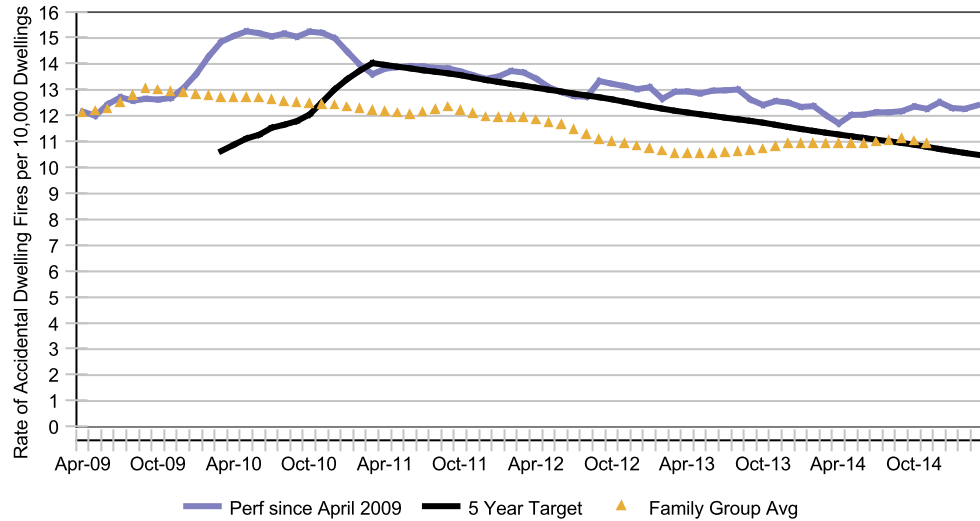
Strategic Dashboard Commentary

Action Plan

Rate of Accidental Dwelling Fires per 10,000 dwellings

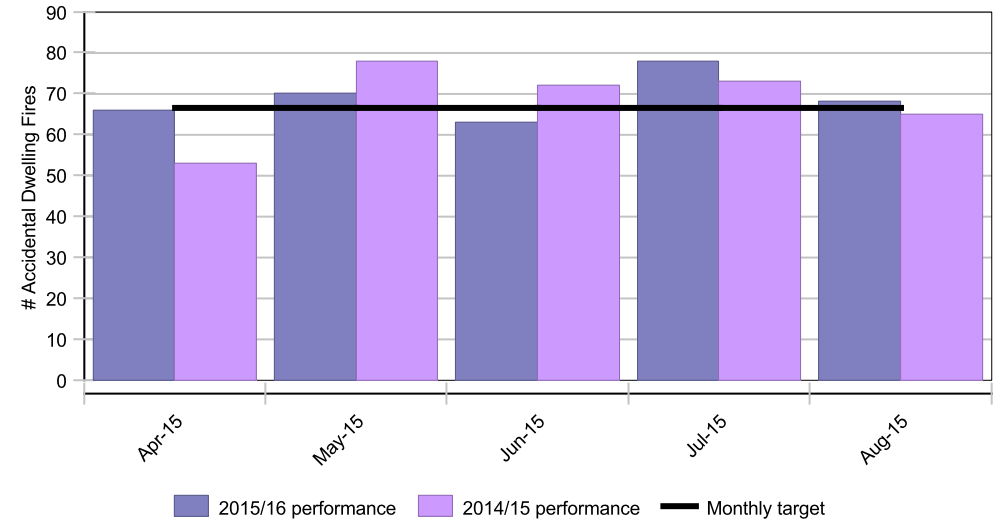
Moving Year (Aug-15)		
Actual	10.8	
Previous Year	12.1	Performance is 10.7% better than previous year
Target	9.9	Performance is 9.6% worse than target

Performance relative to 5 year target



Performance Overview

Monthly performance breakdown



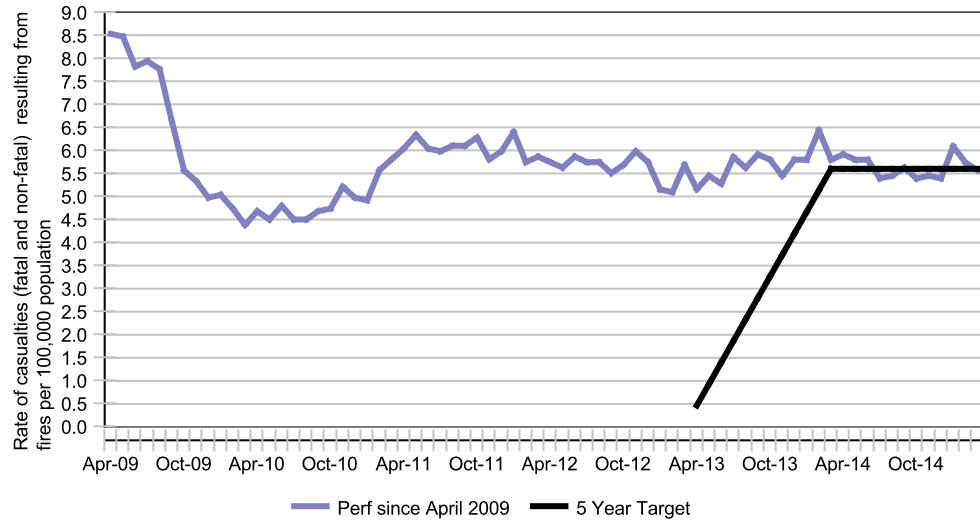
Strategic Dashboard Commentary

Action Plan

Rate of casualties (fatal and non-fatal) resulting from fires per 100,000 population

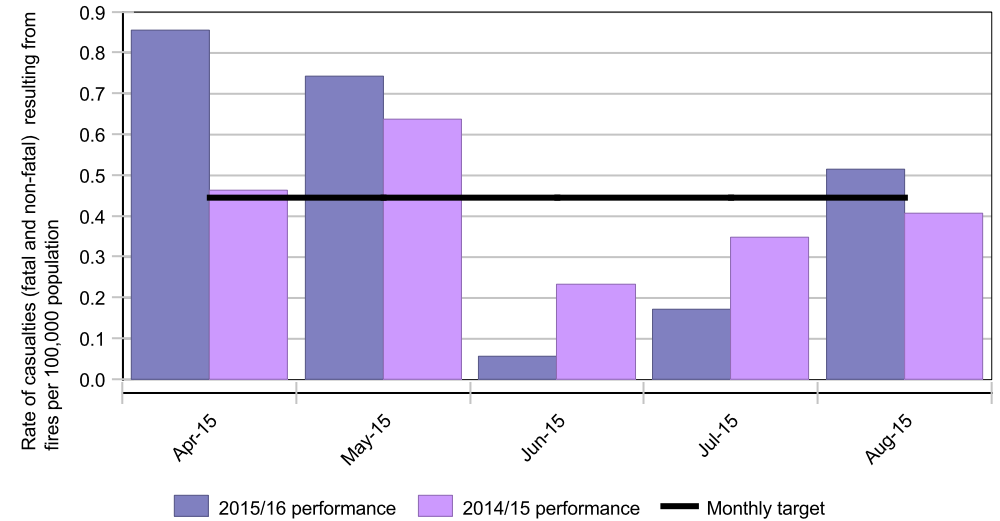
Moving Year (Aug-15)		
Actual	5.8	
Previous Year	5.4	Performance is 5.7% worse than previous year
Target	5.5	Performance is 4.8% worse than target

Performance relative to 5 year target



Performance Overview

Monthly performance breakdown

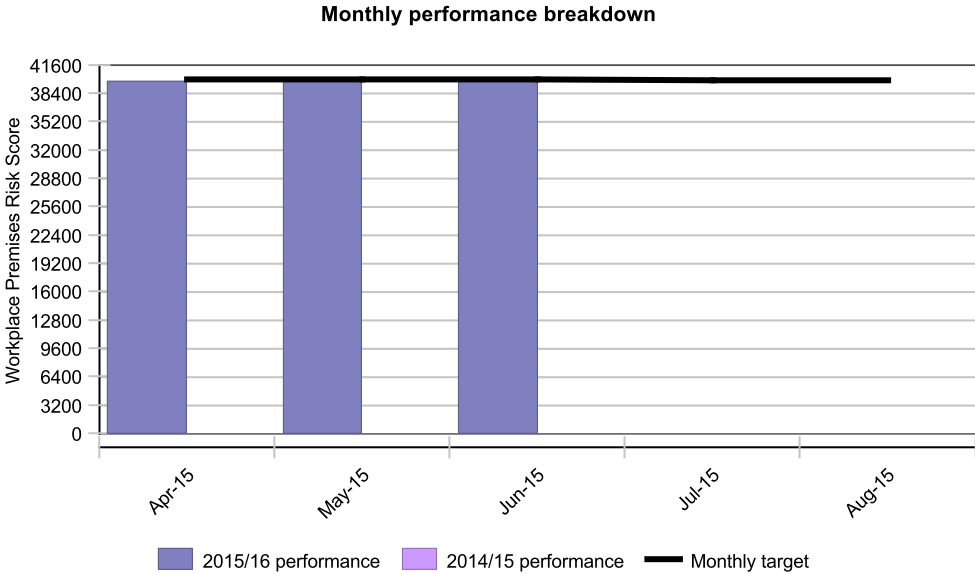
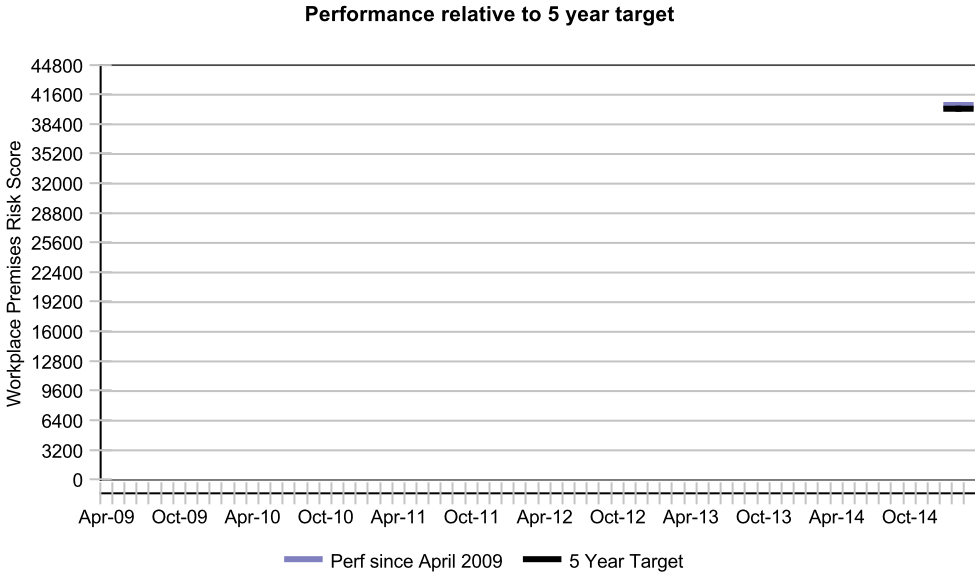


Strategic Dashboard Commentary

Action Plan

Total Essex workplace premises risk score

Moving Year (Aug-15)		
Actual	39,785	
Previous Year		
Target	39,988	Performance is 0.5% better than target



Performance Overview

Strategic Dashboard Commentary

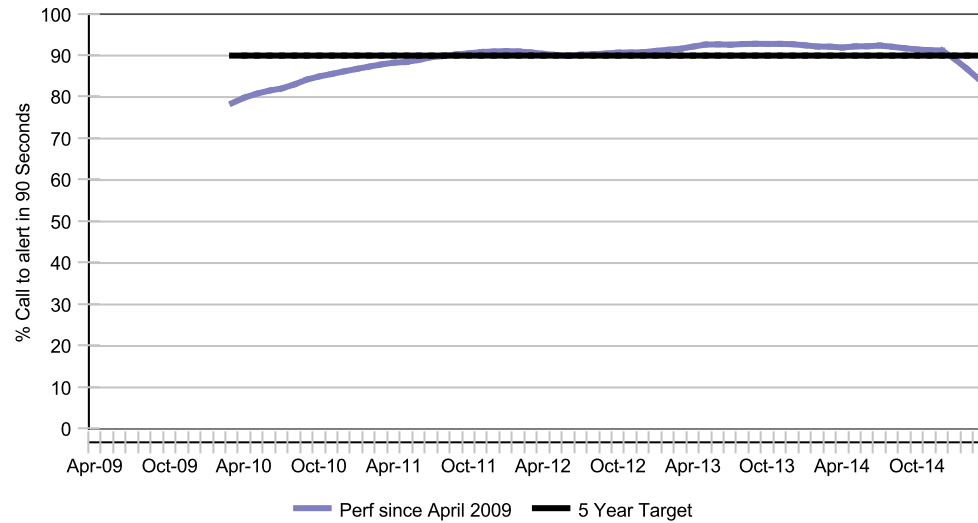
Action Plan

Call to alert in 90 Seconds

Moving Year (Aug-15)

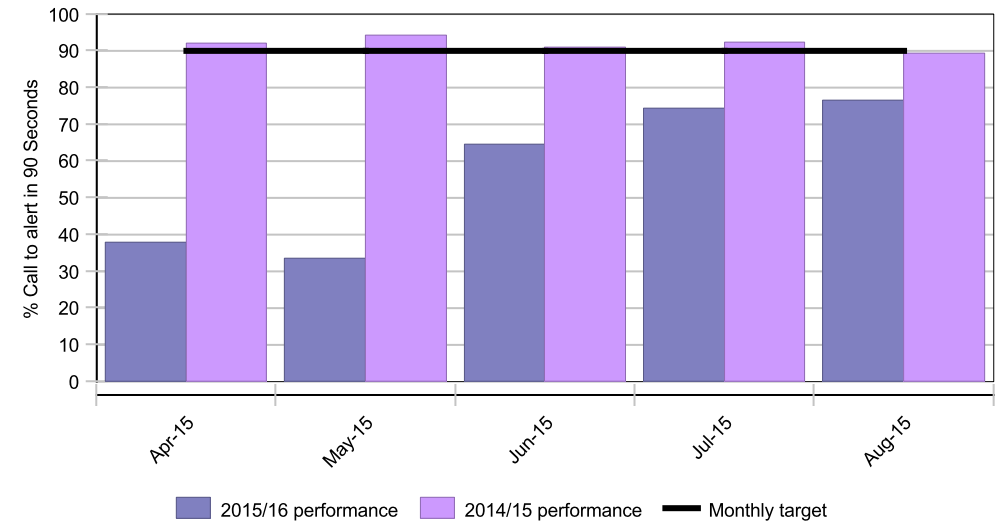
Actual	69%	
Previous Year	92%	Performance is 24.8% worse than previous year
Target	90%	Performance is 23.1% worse than target

Performance relative to 5 year target



Performance Overview

Monthly performance breakdown



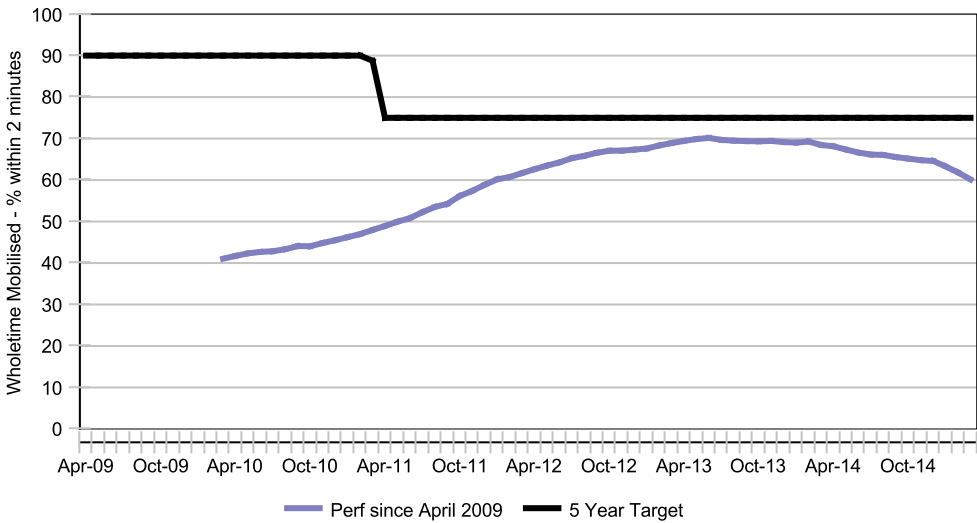
Strategic Dashboard Commentary

Action Plan

Wholetime Mobilise - Time of station alert to proceeding - % within 2 minutes

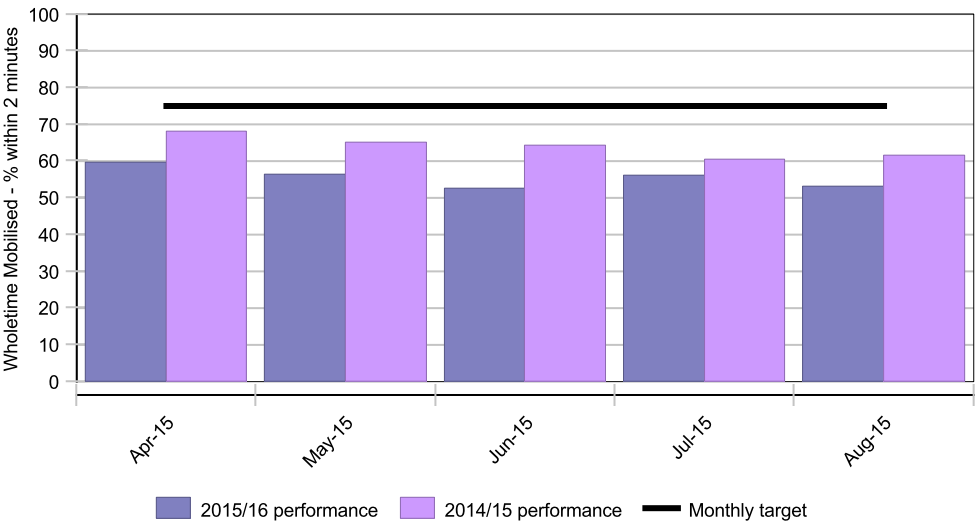
Moving Year (Aug-15)		
Actual	56%	
Previous Year	66%	Performance is 14.9% worse than previous year
Target	75%	Performance is 25.0% worse than target

Performance relative to 5 year target



Performance Overview

Monthly performance breakdown



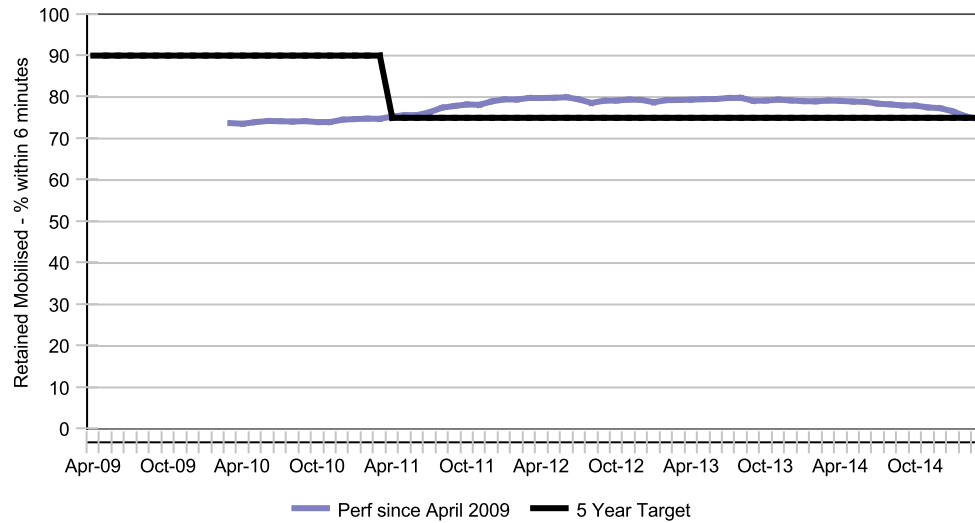
Strategic Dashboard Commentary

Action Plan

Retained Mobilise - Time of station alert to proceeding - % within 6 minutes

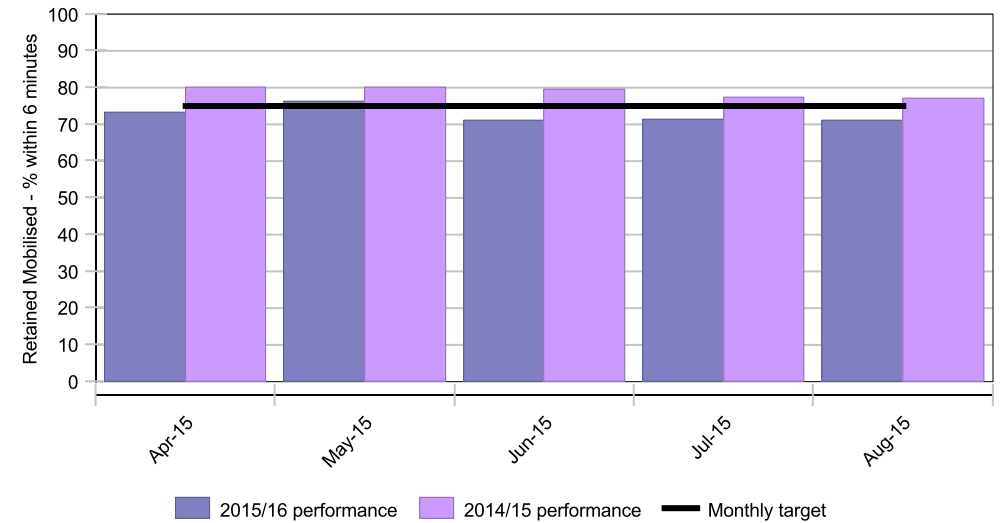
Moving Year (Aug-15)		
Actual	72%	
Previous Year	78%	Performance is 8.2% worse than previous year
Target	75%	Performance is 4.2% worse than target

Performance relative to 5 year target



Performance Overview

Monthly performance breakdown



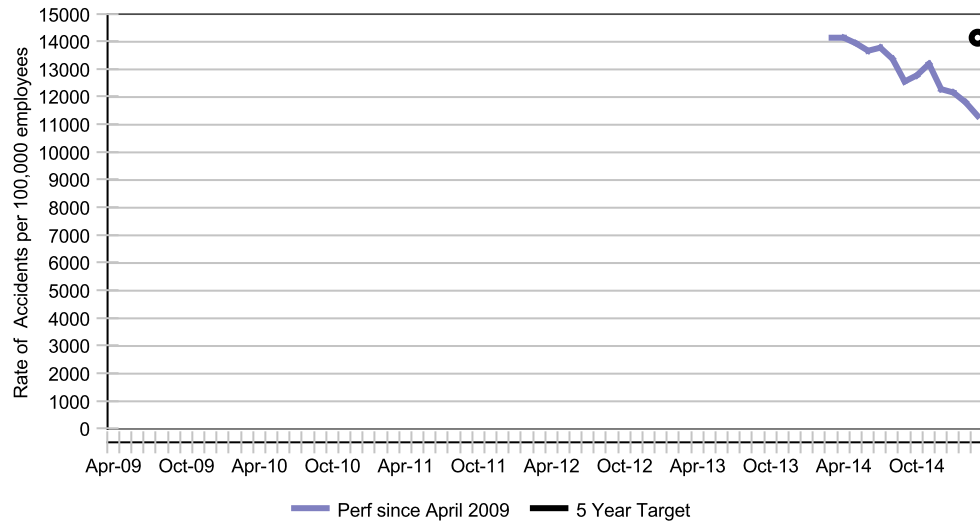
Strategic Dashboard Commentary

Action Plan

Rate of Accidents per 100,000 employees

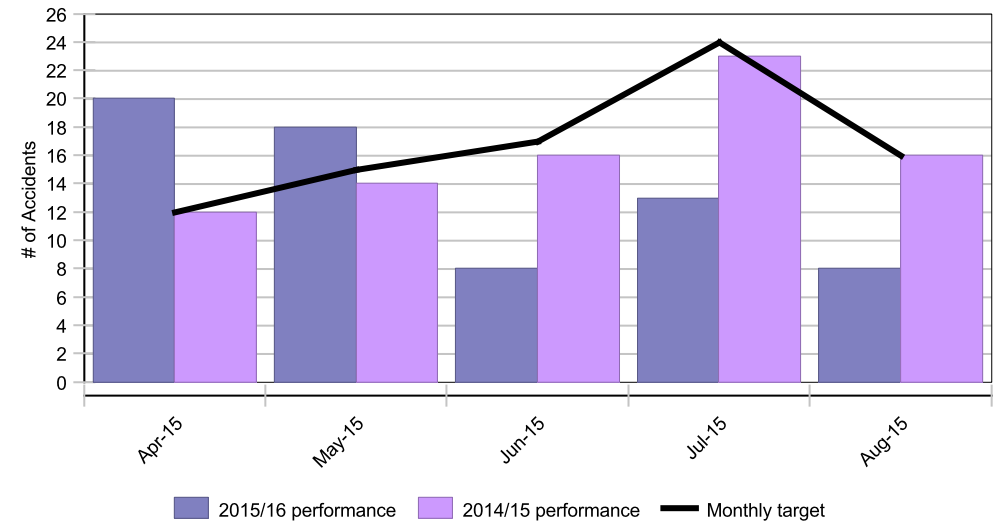
Moving Year (Aug-15)		
Actual	10,684.2	
Previous Year	13,381.3	Performance is 20.2% better than previous year
Target	13,585.1	Performance is 21.4% better than target

Performance relative to 5 year target



Performance Overview

Monthly performance breakdown



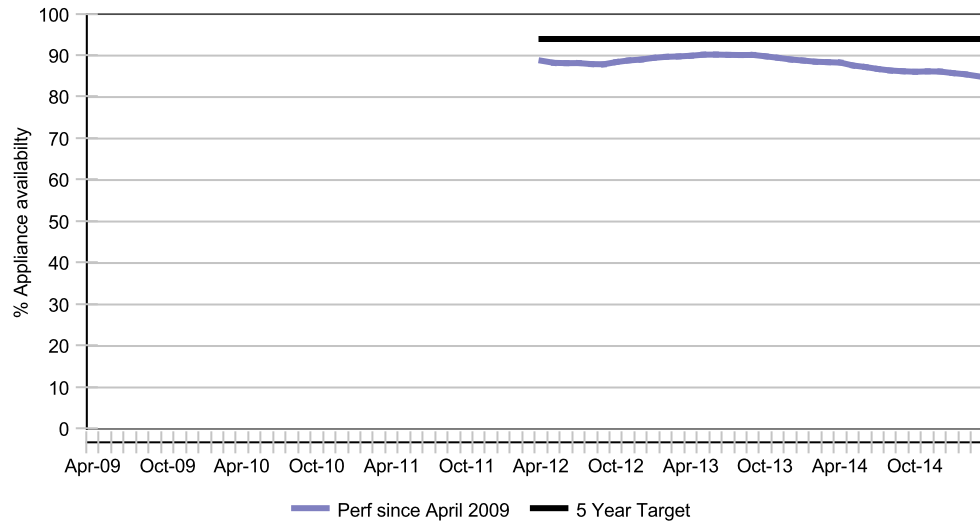
Strategic Dashboard Commentary

Action Plan

Total appliance availability

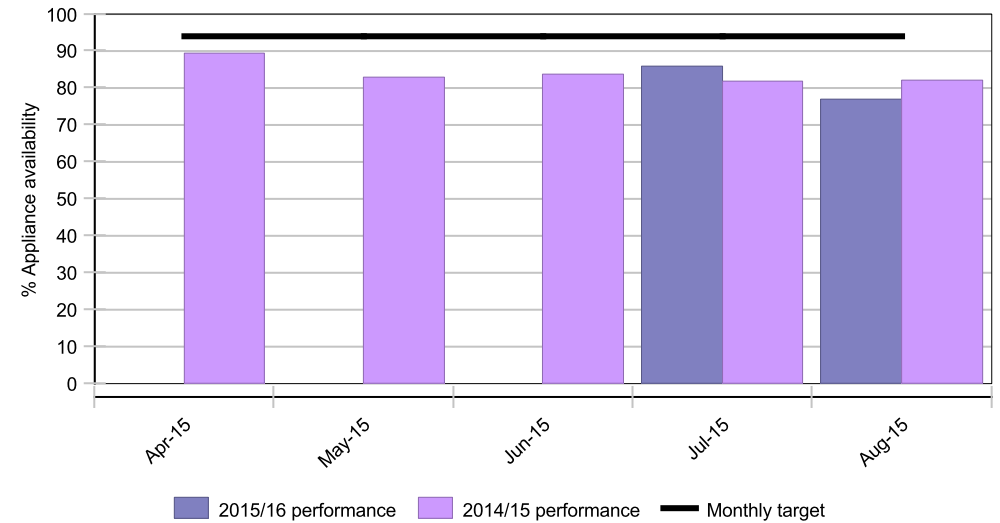
Moving Year (Aug-15)		
Actual	84.7%	
Previous Year	86.4%	Performance is 2.0% worse than previous year
Target	94.0%	Performance is 9.9% worse than target

Performance relative to 5 year target



Performance Overview

Monthly performance breakdown



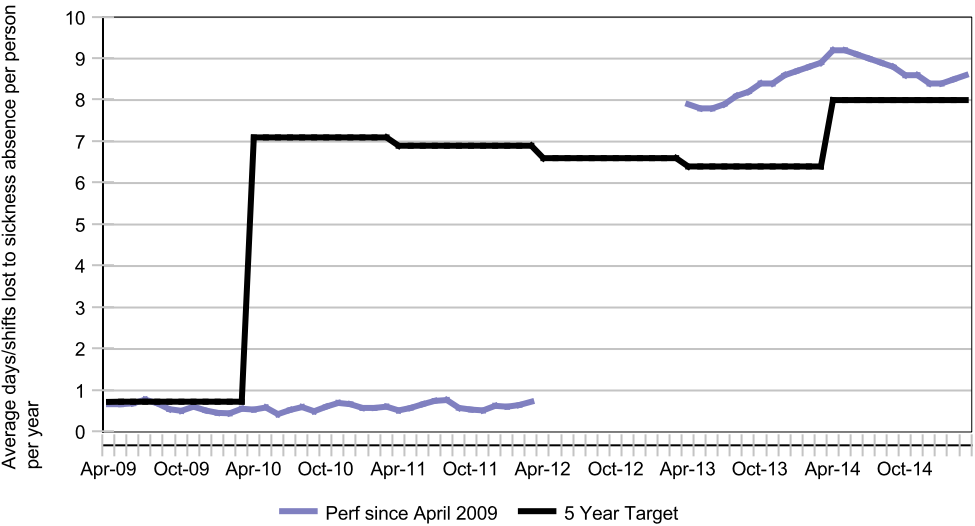
Strategic Dashboard Commentary

Action Plan

Average days/shifts lost to sickness absence per person per year

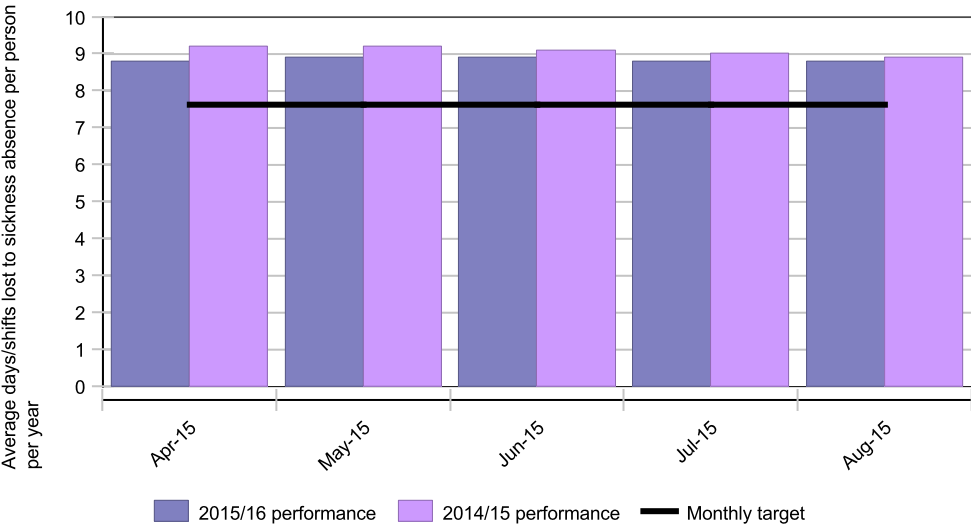
Moving Year (Aug-15)		
Actual	8.8	
Previous Year	8.9	Performance is 1.1% better than previous year
Target	7.6	Performance is 15.3% worse than target

Performance relative to 5 year target



Performance Overview

Monthly performance breakdown



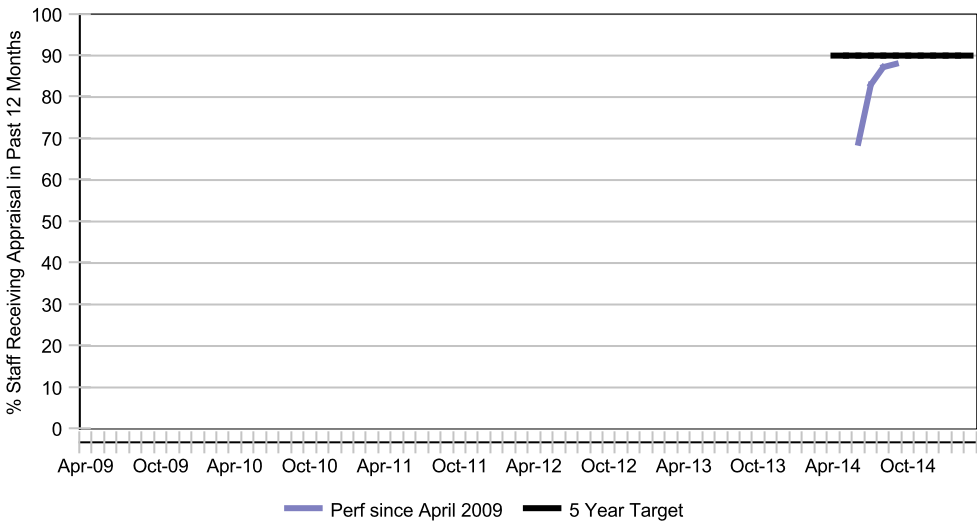
Strategic Dashboard Commentary

Action Plan

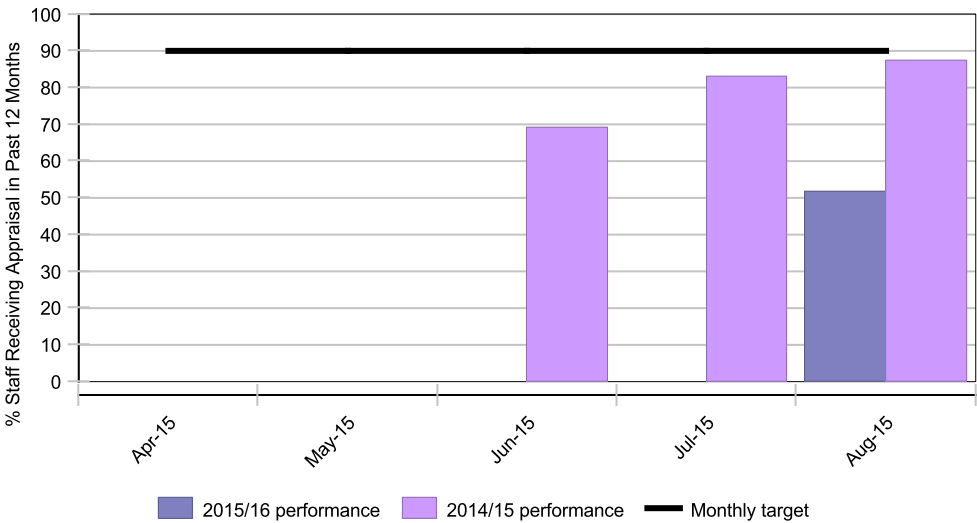
Percentage of staff who received an appraisal in the past 12 months

Moving Year (Aug-15)		
Actual	52%	
Previous Year	87%	Performance is 40.7% worse than previous year
Target	90%	Performance is 42.5% worse than target

Performance relative to 5 year target



Monthly performance breakdown



Performance Overview

Strategic Dashboard Commentary

Action Plan