

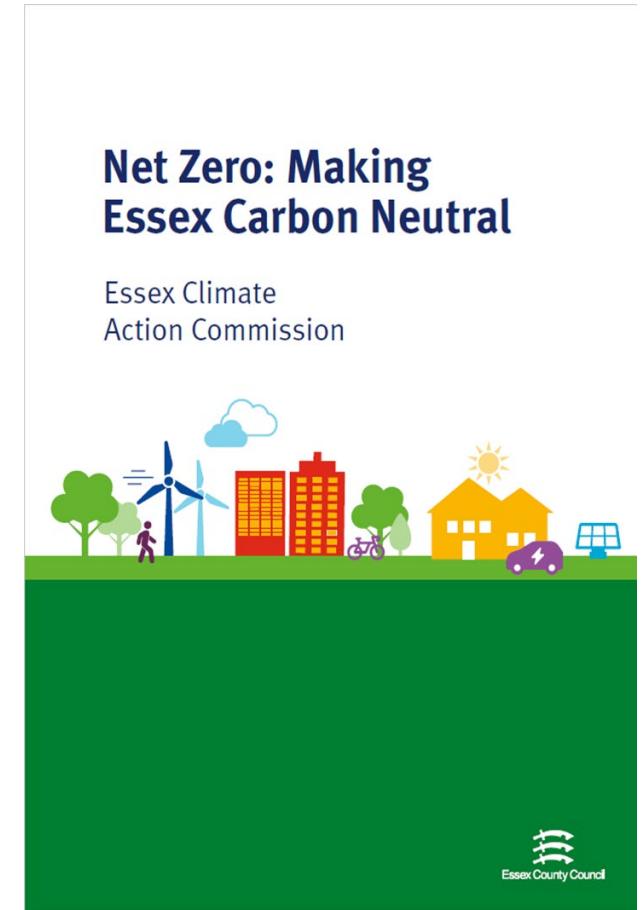
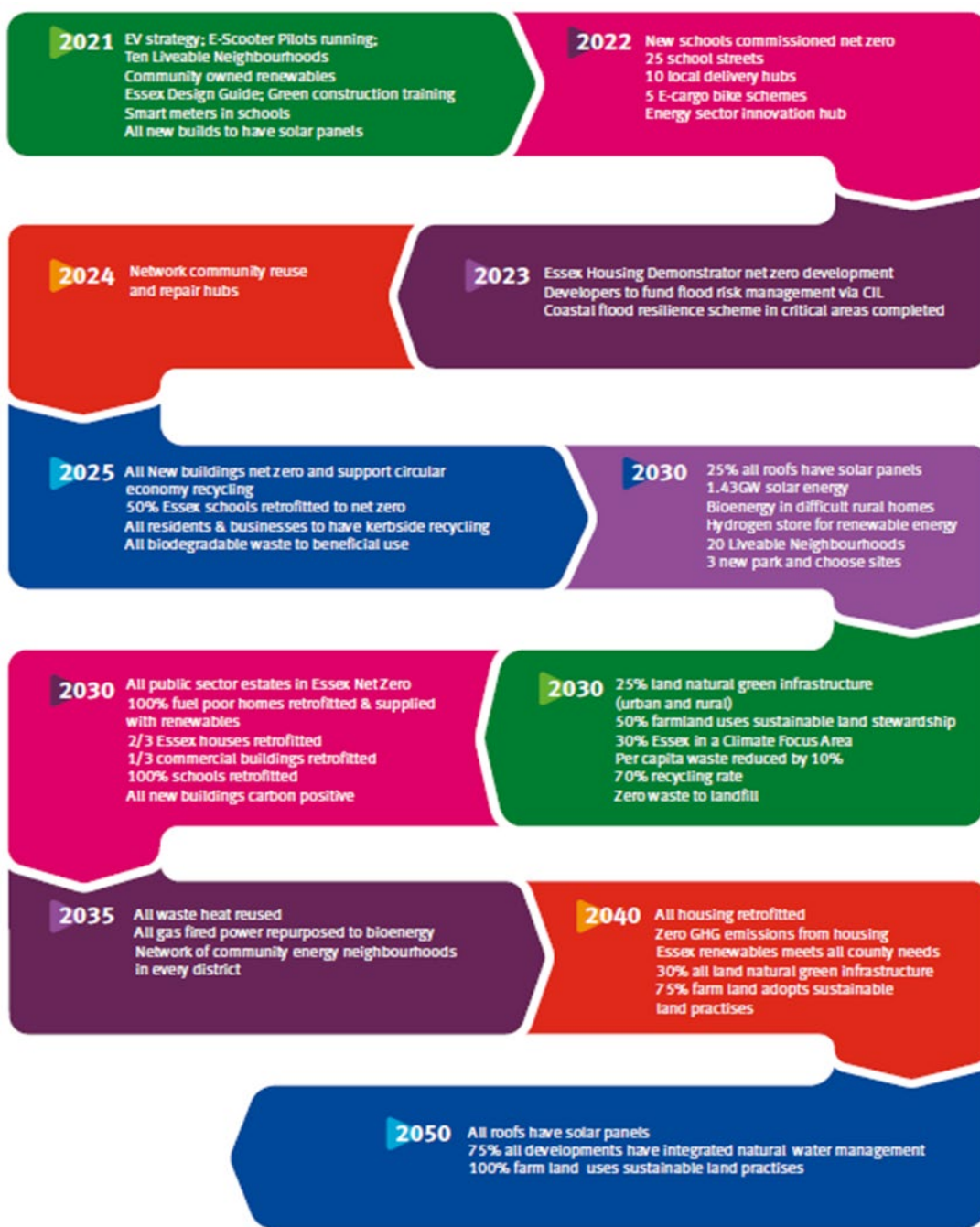
# Essex Climate Action Plan

## District & Borough Climate Forum

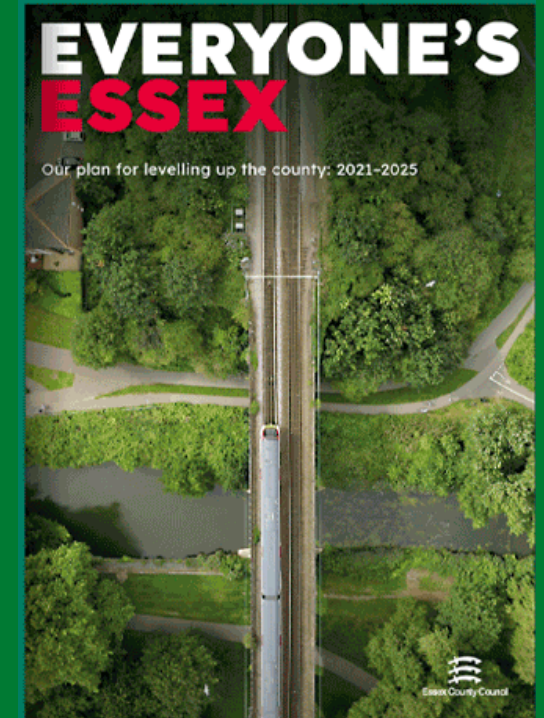
**Samantha Kennedy**  
**Director Environment & Climate Action**

Net Zero: Making Essex Carbon Neutral can be found [here](#)  
ECAC website [www.essexclimate.org.uk](http://www.essexclimate.org.uk)

# Net Zero: Making Essex Carbon Neutral



# Everyone's Essex



Everyone's Essex online

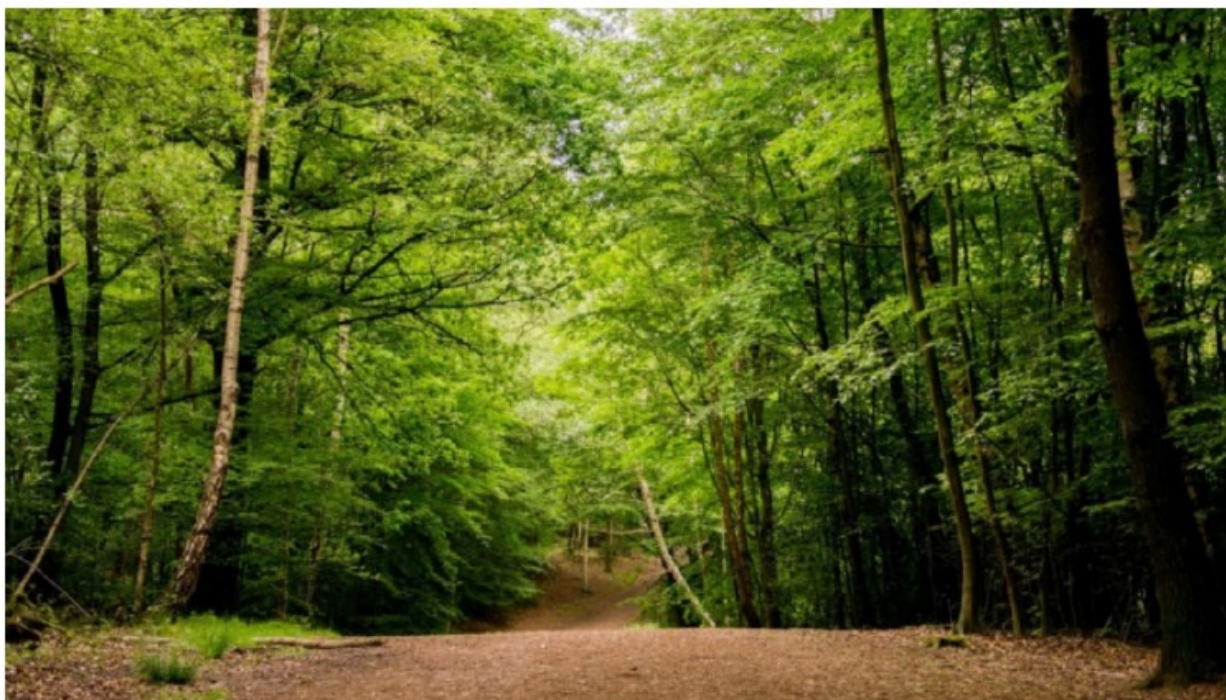
<https://www.essex.gov.uk/everyones-essex-our-plan-for-essex-2021-2025>

Everyone's Essex video

<https://www.youtube.com/watch?v=kbKTCIKtSNo>

[Home](#) > [News](#) > Essex's £200m climate action plan is unveiled

# Essex's £200m climate action plan is unveiled



We have announced a £200m action plan to help tackle the climate crisis in Essex. It details how we will implement the recommendations of the Essex Climate Action Commission's report [Net Zero: Making Essex Carbon Neutral](#).

Essex  
Climate  
Action  
Commission



# Governance, Training & Staff Development

## Decision making

All CMAs & cabinet papers link to Everyone's Essex

- How proposals link to climate ambitions

## Corporate Impact Assessment

- Detailed questions around climate impacts
- Guidance packs being developed

## Green Procurement

- ECC new climate TOMs under development
- Project to green ECC procurement

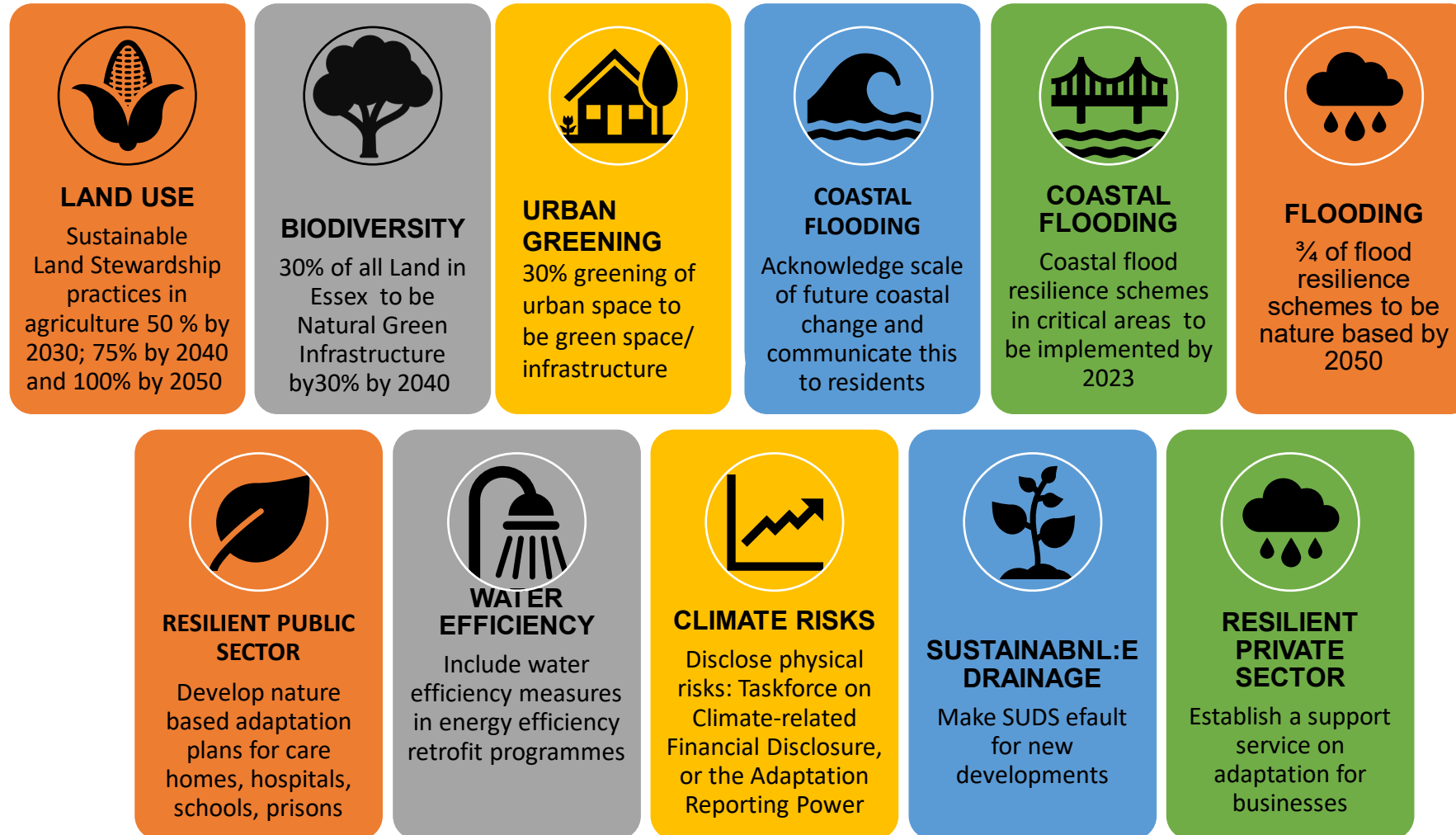
## Training: *Capacity Building Across ECC*

- LearnFest
- Carbon Literacy Training
- Online resources and signposting



# CLIMATE COMMISSION

## LAND USE, GREEN INFRASTRUCTURE, RESILIENCE



# Land Use & Green Infrastructure



## Climate Resilience

- Flood Resilience £12m Capital Programme
- Flood Resilience: Community Resilience Plans with EALC
- Sustainable Drainage as a priority
  - We have approved adaptations on about 90 small streams and watercourses reducing flooding for 90 Essex Communities
  - The SuDS team have managed 317 planning applications, improving flood resistance on c. 16,000 new developments in Essex

## Green Infrastructure

- Essex Green Infrastructure Strategy
- Essex Forest Initiative: Forest partnership committed to 1m trees by 2025 across Essex
- Building with Nature
- Local Nature Partnership & Nature Recovery Strategy
- Water Strategy
- Successful Urban Trees Challenge and Local Authority Treescape Fund for **£360,000 to plant trees** in Essex Towns

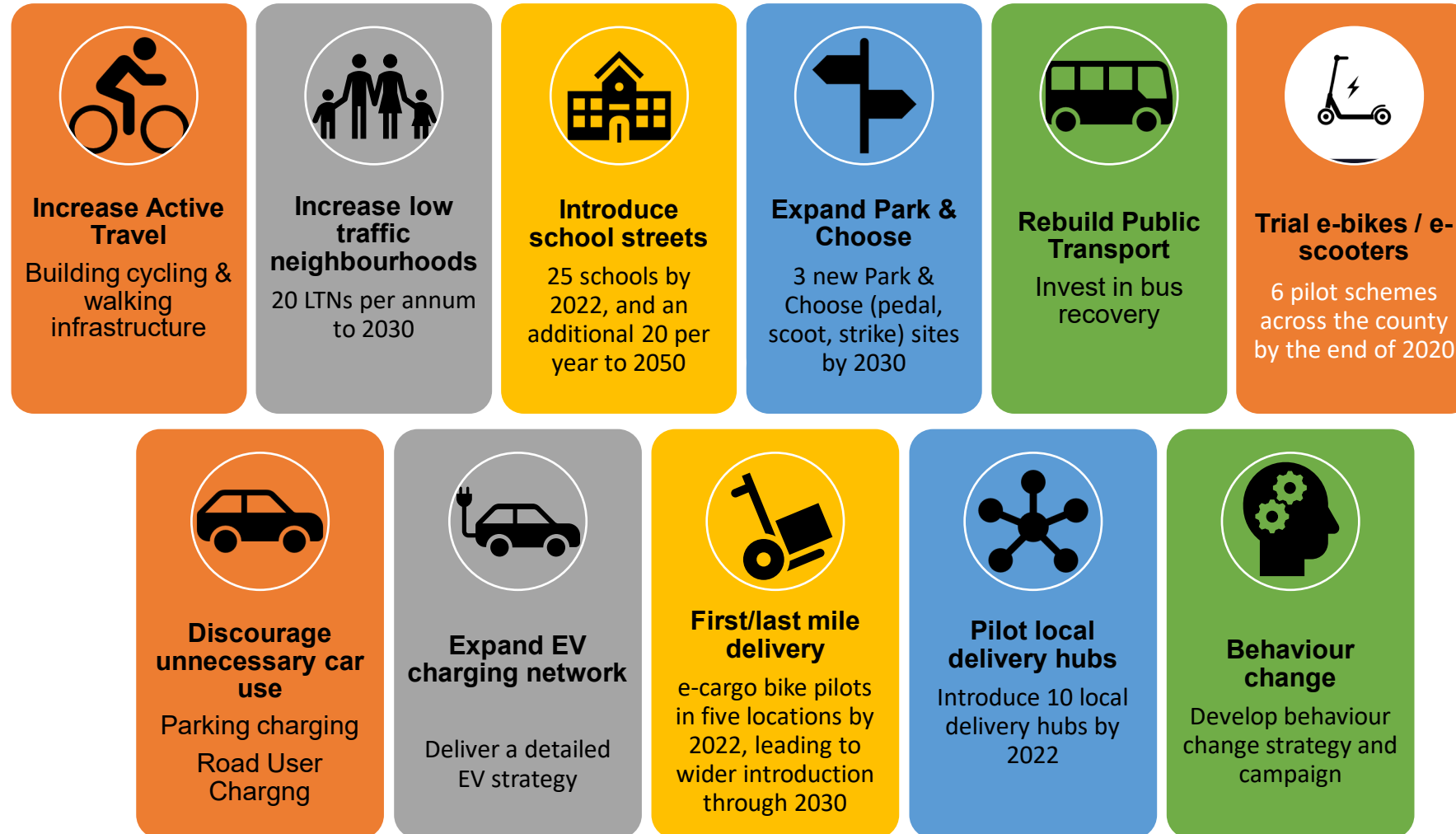


## Make Rain Happy Canvey



Chelmer Valley

# CLIMATE COMMISSION TRANSPORT





# Transport

**New Transport Plan** & supporting policy suite under development

**Bus Services Improvement Plans and Bus Back Better** to rebuild the Essex bus network

**Active Travel** - 5 schemes totalling ~£8M rolling out this year.

**Congestion Schemes** : Army & Navy - people focused solutions focusing on walking and cycling routes.

**Electric scooter trials**, in 6 locations

**Essex Pedal Power** - giving 1,300 residents in Jaywick Sands and Clacton a new bike free of charge.

**Walking Strategy** published

**Safer Greener Healthier and Stop Swap Go** behaviour change campaigns

**Local Cycling and Walking Infrastructure plans** for our districts, developing a long-term framework which will guide future investment in walking and cycling infrastructure. Investing £4.75m in new cycle ways and £3m to maintain our existing network.

**Alternative Fuels strategy**, rolling out electric chargepoints and electrifying the ECC car fleet.

**Warm Tarmac & LEDs**

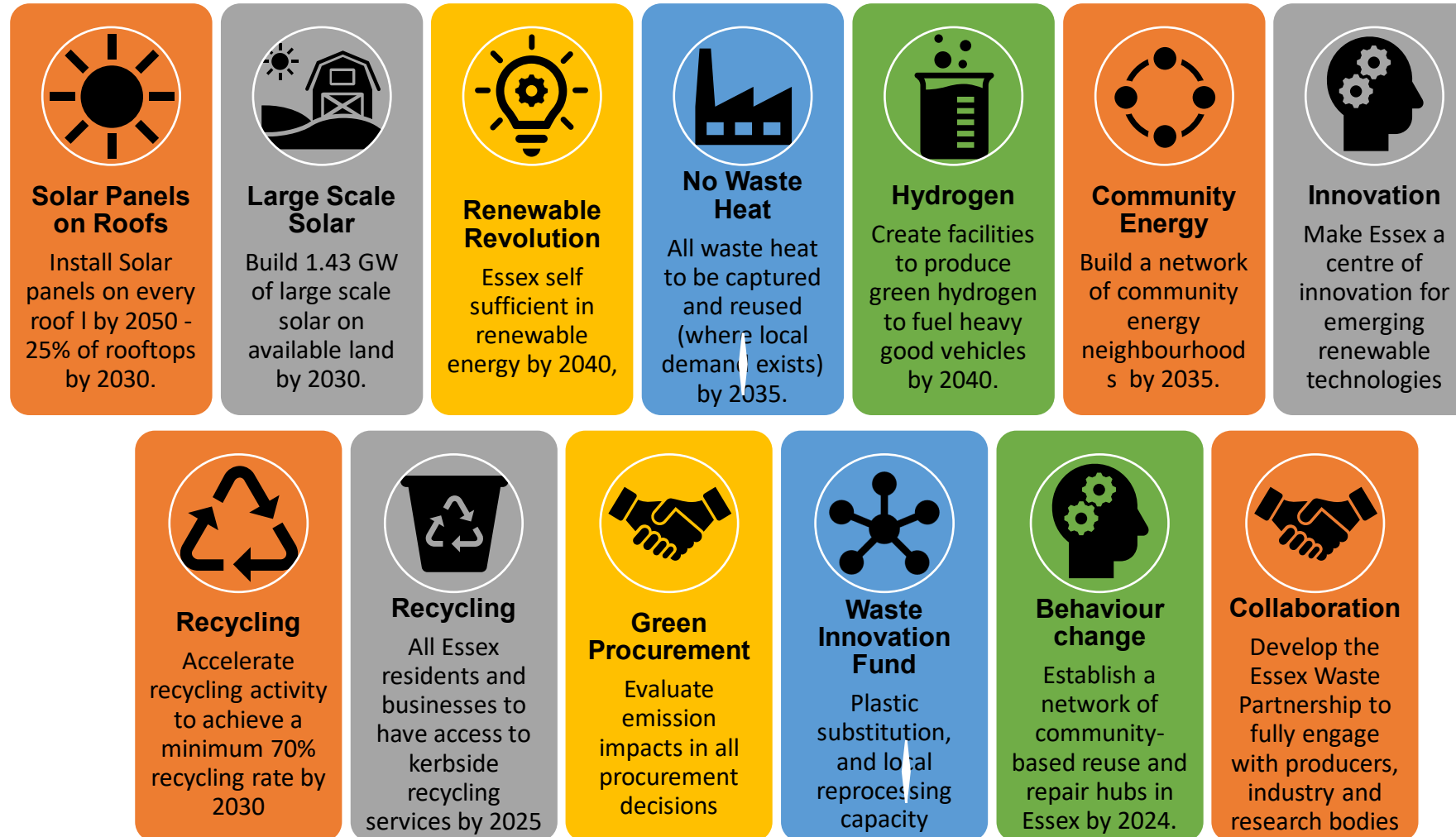


Escooter Trials



# CLIMATE COMMISSION

## ENERGY & WASTE



# Energy

- Renewable Energy Procurement
  - 100% ECC energy moving to renewable supply
- Renewables on our Estate
  - Danbury Country Park, 14 schools, ERO
- South East New Energy
  - £6m grant for community solar and storage
- Solar Together
  - residents bulk buy for solar panels
- Essex Energy Switch
  - residents switching energy supplier
- Community Energy Groups



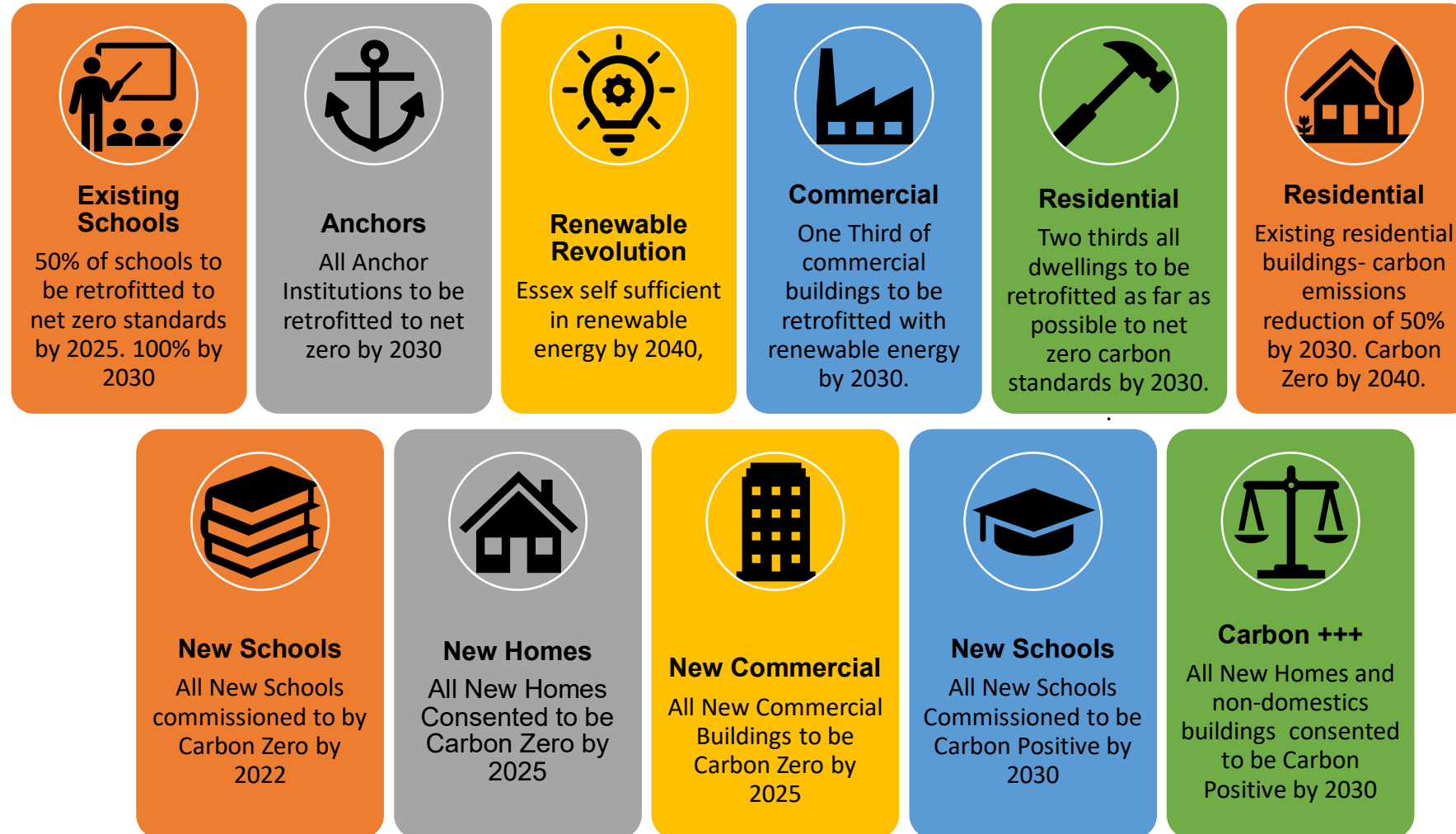
# Waste

- New Essex Waste Strategy
- Insourcing recycling centres
- Love Essex partnership
  - Composting
  - Waste busters
  - Cloth nappies
  - Champions: embedding volunteering
- Blueprint for a Circular Economy
  - Love your period
  - Food waste reduction pilot
  - Library of things
  - Schools pilot
- Biowaste Procurement



# CLIMATE COMMISSION

## BUILT ENVIRONMENT





# Built Environment

## Retrofit

- ECC estate: a policy to be net zero by 2030
- Fuel Poor Homes: £0.8m delivered; Successful joint bids £5.2m & £17.2m grant pots
- Social Housing: Applied with Social housing providers for £2.58m grant
- Working in partnership the 2 Districts to develop Area focused schemes
- Anchor Institutions commitments
- Smart meter roll out across schools and ECC estate



[Fears Essex families are slipping into fuel poverty because of pandemic | ITV News Anglia](#)

## New Build

### *Working closely with EPOA*

- ECC schools EPC A+ & net zero pilots
- Essex Design Guide
- Training for Planning Officers
- Garden Communities
- Developer Group Charter
- Green Skills Review

# CLIMATE COMMISSION COMMUNITY ENGAGEMENT



# Communications & Engagement

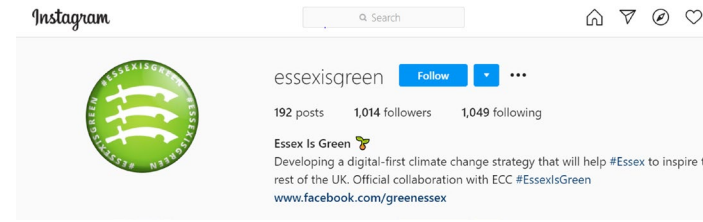
- Completed consultation & resident research
- Detailed comms plan
  - Commission website
  - Warm Homes website
  - Monthly Climate Newsletter for Members, Commissioners & residents
- Detailed community engagement
  - [EALC webinars](#), conference in Jan & staff support
  - Trylife app designed by and for children
  - Essex is Green social media channels
- Advice packs
  - Residents (launch in next few weeks)
  - Schools
  - SMEs (launch business conf in spring)
  - Essex carbon app in development

## Events

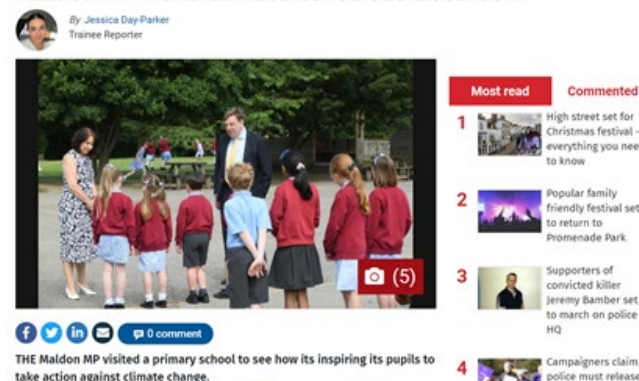
- [Report launch virtual event](#) – 20 July.
- [Zero carbon bus tour event](#) – 1 September.
- Manifesto for Essex youth summit – 11 September
- [Electric road to COP26](#) – 29 October.
- [Epping Forest Youth Conference](#) – 19 November.

## Campaigns

- [Green Homes Grant Local Authority Delivery Scheme](#) – Phase 1 £800,000/80 homes. Phase 2 - £5.2m.
- D-DRT – Six demand responsive electric buses launching soon.
- [Climate Action Challenge Fund](#) a £500k grant programme
- Lets Go Zero campaign for schools



## Maldon MP visits climate-conscious classroom



# Green Growth

- **Green growth means fostering economic growth and development while ensuring that natural assets continue to provide the resources and environmental services on which our well-being relies.** Source: OECD [Green Growth Strategy](#)
- To do this it must catalyse investment and innovation which will underpin sustained growth and give rise to new economic opportunities.



ECC via their sector development strategy have gathered insight data and modelling on the future economy of Essex. Essex is a place of opportunity. The greatest growth potential within the following sectors:



**Clean Green Energy** (including low emission vehicles tech)



**Green Lifesciences** (focusing on med & care tech)



**Digitech** (including Fin, Insure, Agri, Marine)



**Green Construction and Retrofit** (including NSIPs)



**Advanced Manufacturing & Engineering**



We need to ensure the recovery is as green as possible and takes us further towards our net zero ambitions not stores up more problems for the future.



Some of the key growth sectors of the future are green - we must ensure those businesses and jobs come to Essex



The size of the prize is vast: the investment in transitions to zero emission vehicles, housing and commercial retrofit for example runs into millions of pounds of spend



The businesses, residents and skills providers need our help to take advantage of the opportunity. We need to create a pipeline of demand for businesses and skills providers.



# GREEN GROWTH – PLACE SHAPING - PIONEERING, INNOVATING & SHOWCASING



## One Stop Shop

Developing a resource providing Information, Advice and Guidance to businesses and residents on green growth opportunities



## Anchors

Working collaboratively with anchors to align green action and messages to harness green growth and be greater than the sum of our parts



## Research

Working in partnership with ARU's Global Sustainability Institute. Co-funding a PhD placement to research and evidence the work of the NZIN



## Pipelines of Activity

Create pipelines and projects to attract businesses and jobs through NZIN & the Sector Development Strategy.



## Retrofit Skills

Delivering the Community Renewal Fund ~£700k to develop a Retrofit Pipeline in Essex in partnership with The Retrofit Academy CIC



## Net Zero Innovation Network (NZIN)

Establishing Essex as a green centre of excellence harnessing innovation



## Green Growth

Working to support businesses to transition to greener practices and to capitalise on opportunities



## Retrofit Business Support

Pioneering the first ever business support programme in the country for social housing providers - "Fit for Retrofit"



## Greener Procurement

Working with procurement colleagues to get the best green growth social value contributions



## Communicating & Showcasing

Through our NZIN Newsletter quarterly, holding tri annual conferences and gaining traction on social media

# Annex: Everyone's Essex



Essex County Council

# Health, Wellbeing and Independence for all Ages

---



## Healthy Lifestyles

We will aim to increase the proportion of people able to live healthy lifestyles by embedding a community-first approach, by helping people to overcome social isolation, mental ill health and substance misuse and by helping people to live fit and active lifestyles.



## Carers

We will help those carers of all ages whose caring duties are impacting most on their well-being by achieving a step change in the advice, guidance and support we provide to support well-being and independence and by targeting it at those who need it most.



## Promoting Independence

We will help individuals to live safely and independently by assisting access to suitable accommodation, supporting access to employment and meaningful activities, enabling independence at home through reablement, care technology, market shaping to ensure strong domiciliary support, investment in housing, and through working with key partners and the Adult Safeguarding Board.



## Place-based working

We will deliver better care that meets the needs of residents by joining up care and support with local partners in a place, including with district councils, health partners and the local voluntary and community sector.



## Levelling Up Health

We will seek to reduce health inequalities by bringing together partners and communities to address the socio-economic drivers that underpin poor health outcomes, such as poor housing, poverty, economic insecurity and low skills.

# A Good Place for Children and Families to Grow

---



## Education Outcomes

We will achieve educational excellence and high standards for all children and young people as we recover from the pandemic, by working in partnership with early years providers, schools, colleges and universities, by building greater coherence across the system and by engaging businesses, communities and the arts sector in supporting education outcomes.



## Family Resilience and Stability

We will work to strengthen family resilience and stability, as part of thriving communities, by embedding an approach that tackles the drivers of family instability and provides support to low income, vulnerable and working families.



## Levelling Up Family Outcomes

We will work to address inequalities affecting children and families by focusing on recovery from the pandemic, tackling family poverty, mental health support, emotional wellbeing and healthy, active and productive lifestyles, making sure that we engage hard to reach groups.



## Outcomes for Vulnerable Children

We will work to improve outcomes for the most vulnerable and disadvantaged groups including Children in Care, Care Leavers, Children with SEND and children from BAME communities by working with children, young people and partners across the system.



## Safety

We will continue to improve the safety of all our residents by addressing domestic abuse and neglect; violence against women, girls and vulnerable young people; sexual abuse and exploitation; online harms; and road safety. We will do this through close partnership working, through our nationally recognised approach to early intervention, through appropriate use of data analytics and through supporting safer communities.



# Sustainable Economy

---



## Future growth and investment

We will help grow the economic sectors of the future in Essex, including the arts, secure high levels of new investment and grow existing businesses by working with partners to promote the County and create the conditions for growth and retain public sector spend within the county.



## Green growth

We will develop Essex as a centre for innovation, supporting new technologies and business models to support our economy to transition to net zero and secure green jobs for the future by ensuring we have the right local skills and drawing in investment opportunities.



## Infrastructure

We will deliver high quality infrastructure to improve opportunities for people living in Essex as well as supporting a growing economy and the delivery of new homes and communities by investing in excess of £1bn by the end of this Council.



## Good jobs

We will work hard to address the impacts of the Covid pandemic on unemployment by supporting business recovery and building a stronger economy for the future, enabling people to build the skills they need to be part of it, and working alongside Essex businesses to help reduce barriers to employment for disadvantaged groups.



## Levelling Up the Economy

We will work to level up the economy by addressing the drivers of socio-economic inequality and based on the foundation of good jobs and a higher skilled and healthier workforce.

# High Quality Environment

---



## Net Zero

We will work across the Council and the County to hit our net zero targets, by ensuring that the Council significantly reduces its carbon footprint whilst also supporting an acceleration in the progress towards sustainable housing and energy, and active and alternative forms of travel across the county.



## Green Communities

We will work with communities and businesses, providing advice and support to enable and empower local action to reduce greenhouse gas emissions and build climate resilience.



## Transport and Built Environment

We will deliver a step change in sustainable travel across the county, by growing passenger transport and active travel, and will ensure we support the move towards net zero, climate resilient developments, including our new garden communities, by delivering sustainable and healthy neighbourhoods for the future.



## Minimise Waste

We will minimise the impact on the environment by supporting residents and businesses to reduce waste and increase the amounts recycled, and by working.



## Levelling Up the Environment

We will help all our communities to enjoy a high-quality environment by making them more resilient against flooding, heat stress and water shortages, by enhancing our county's green infrastructure and by reducing air pollution.