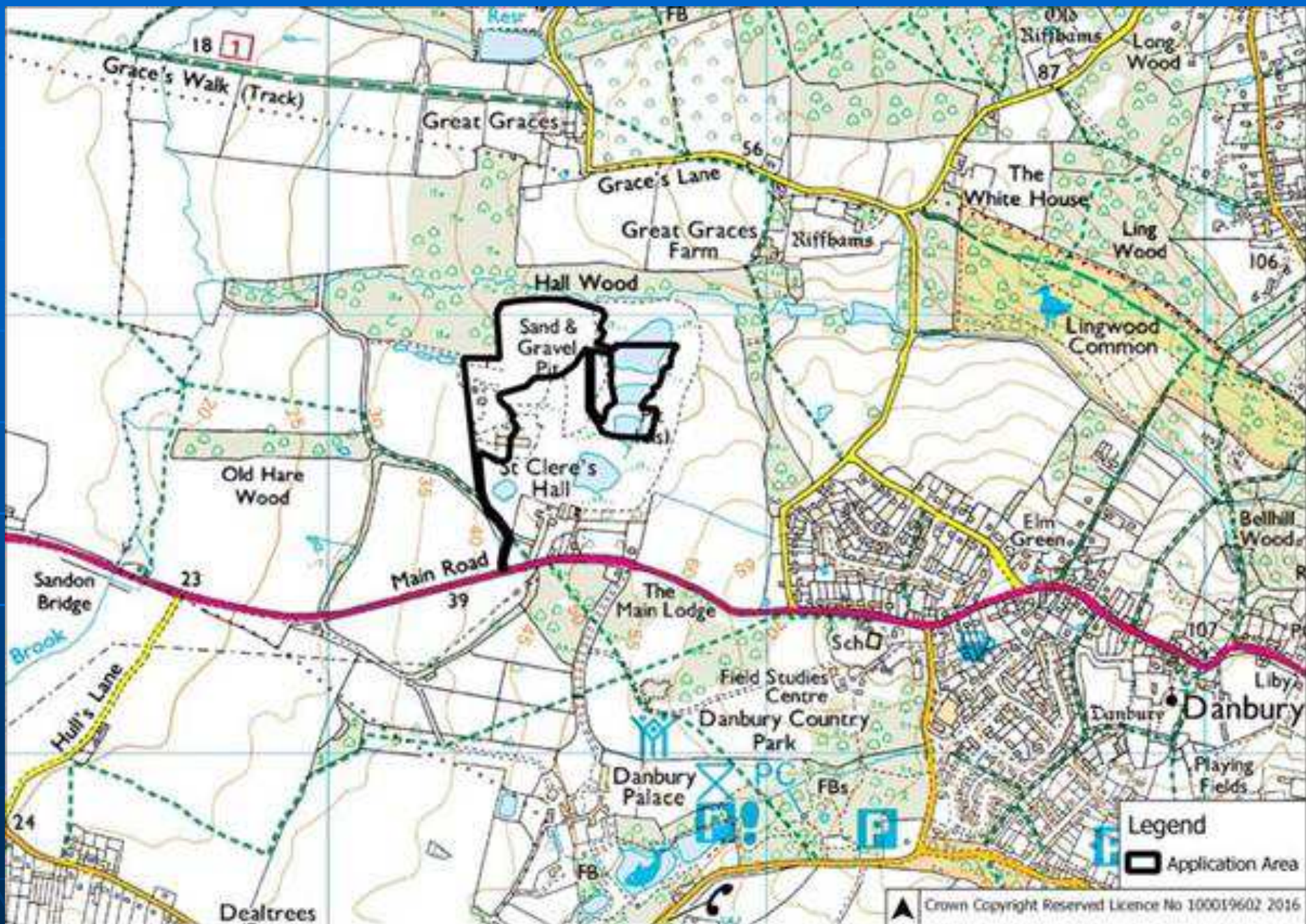




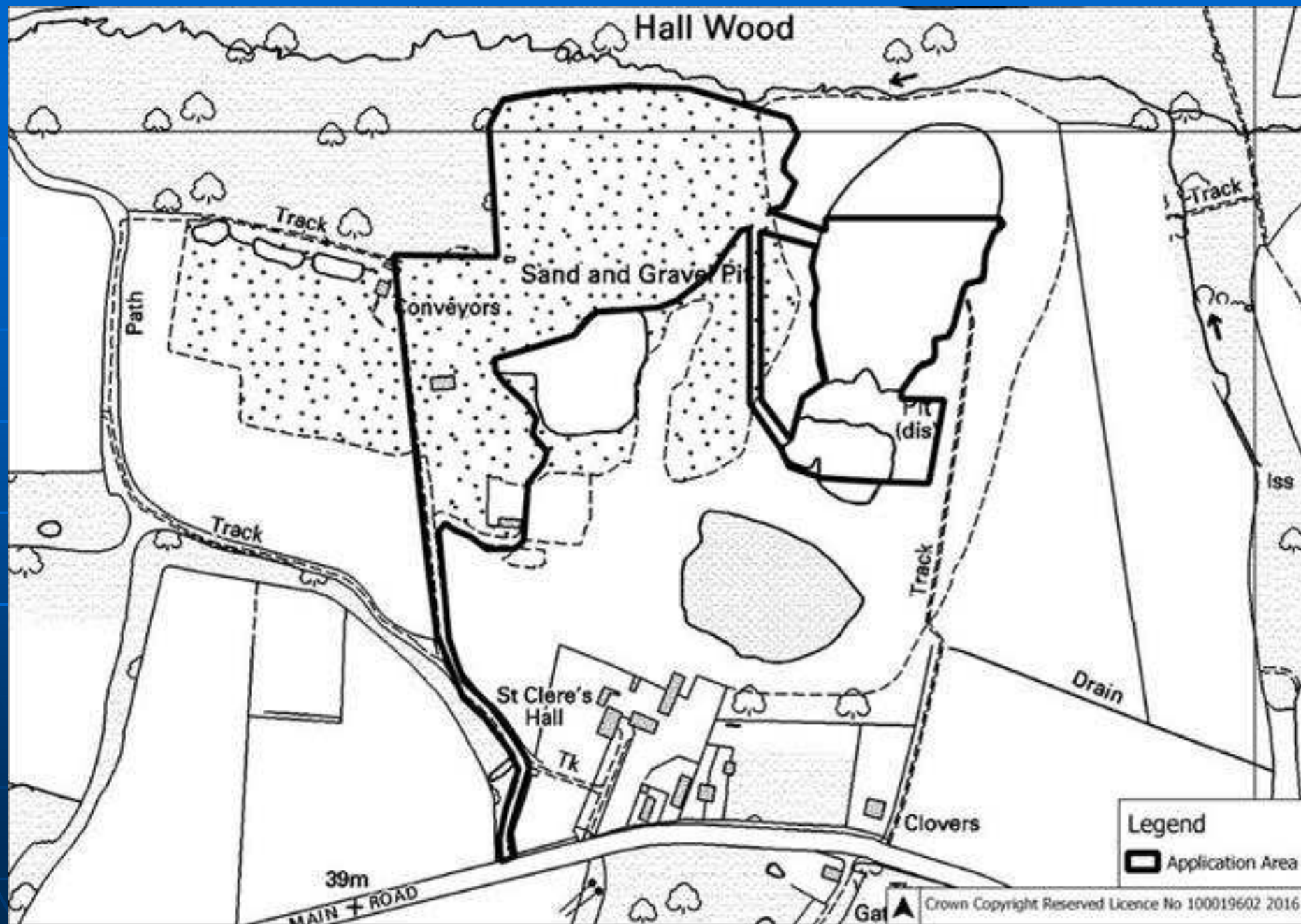
# Development and Regulation Committee

**Land at St Cleres Hall Pit  
ESS/49/19/CHL & ESS/50/19/CHL**









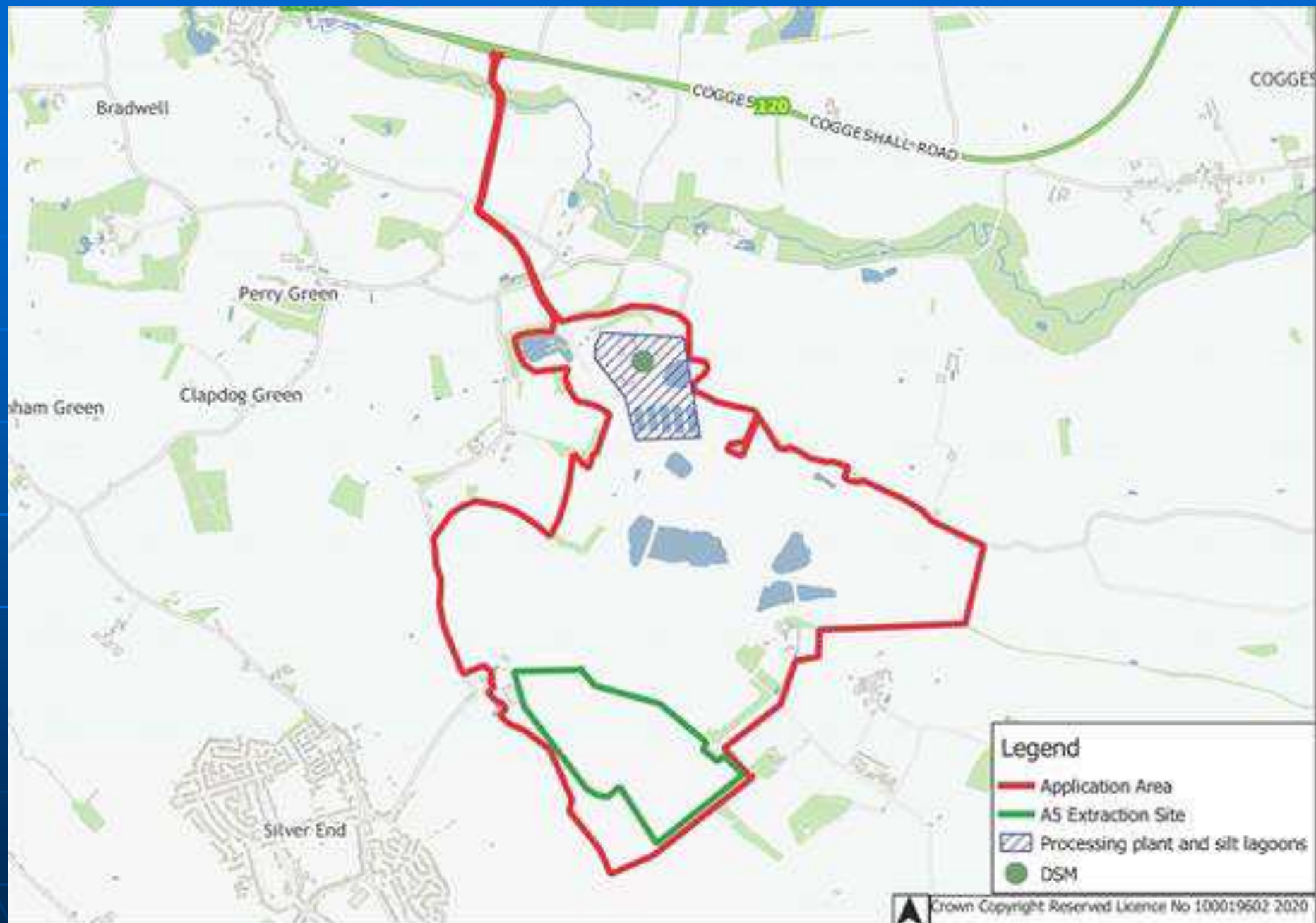






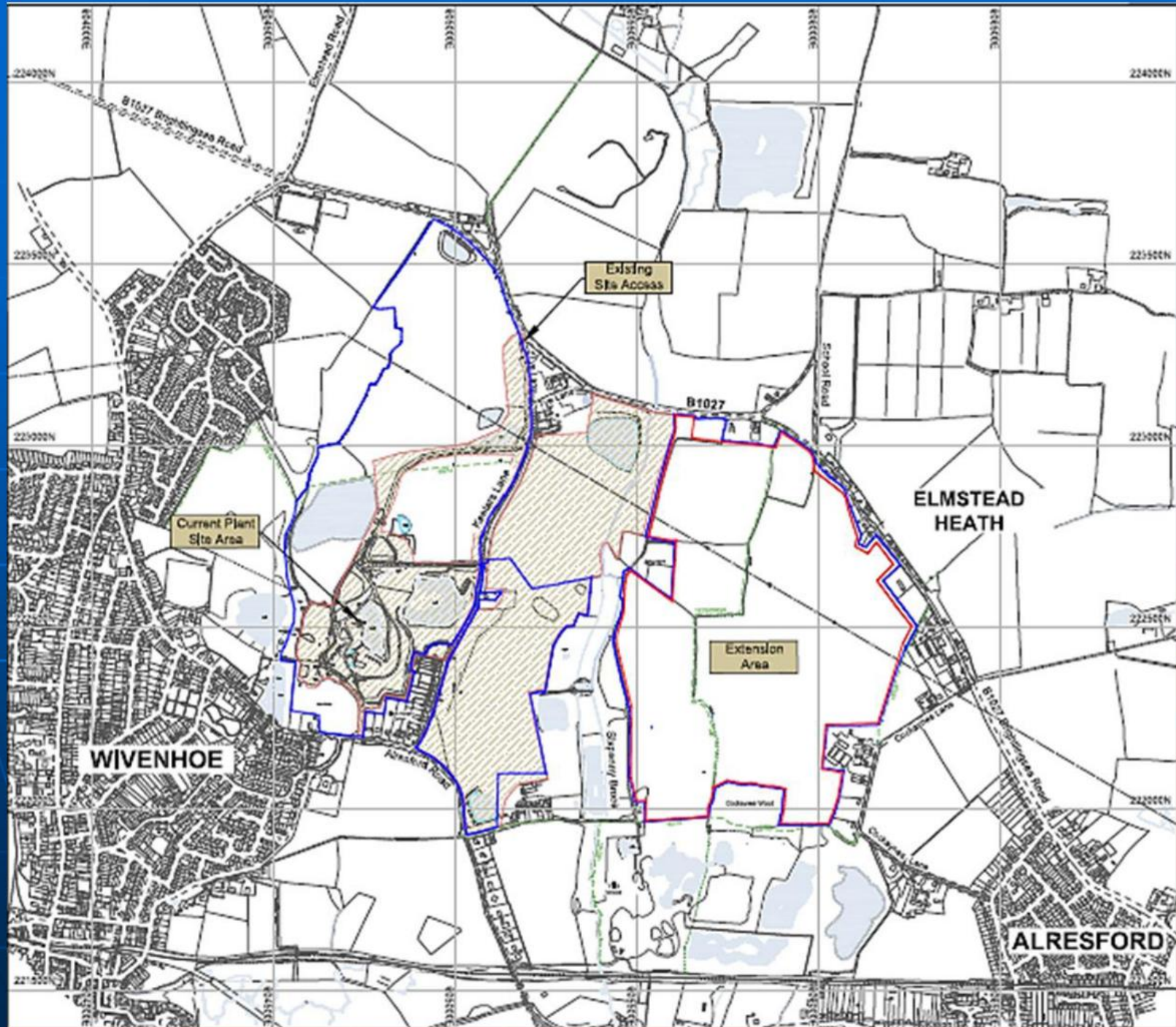
# **Bradwell Quarry**

## **ESS/35/20/BTE**





**Land to the South of Colchester  
Main Road (known as Sunnymeade,  
Elmstead and Heath Farms)  
ESS/17/18/TEN**



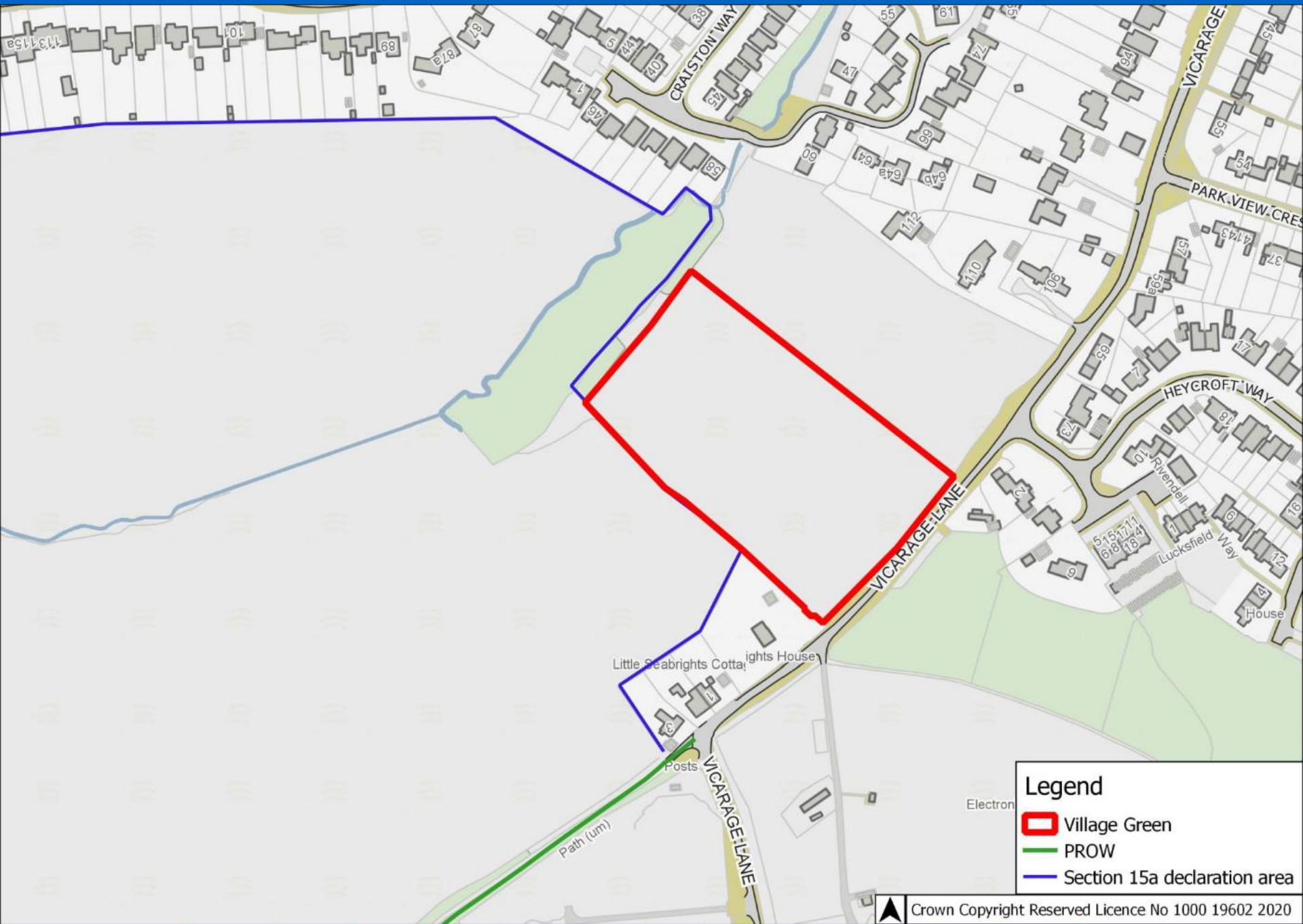







# **Programme of periodic Review of Old Mineral Permissions (ROMPs)**



# **Land at Luxfield, Great Baddow**



**Legend**

-  Village Green
-  PROW
-  Section 15a declaration area





# Development and Regulation Committee