

ECC Wellbeing and Public Health

Covid Update HOSC 7/10/2021



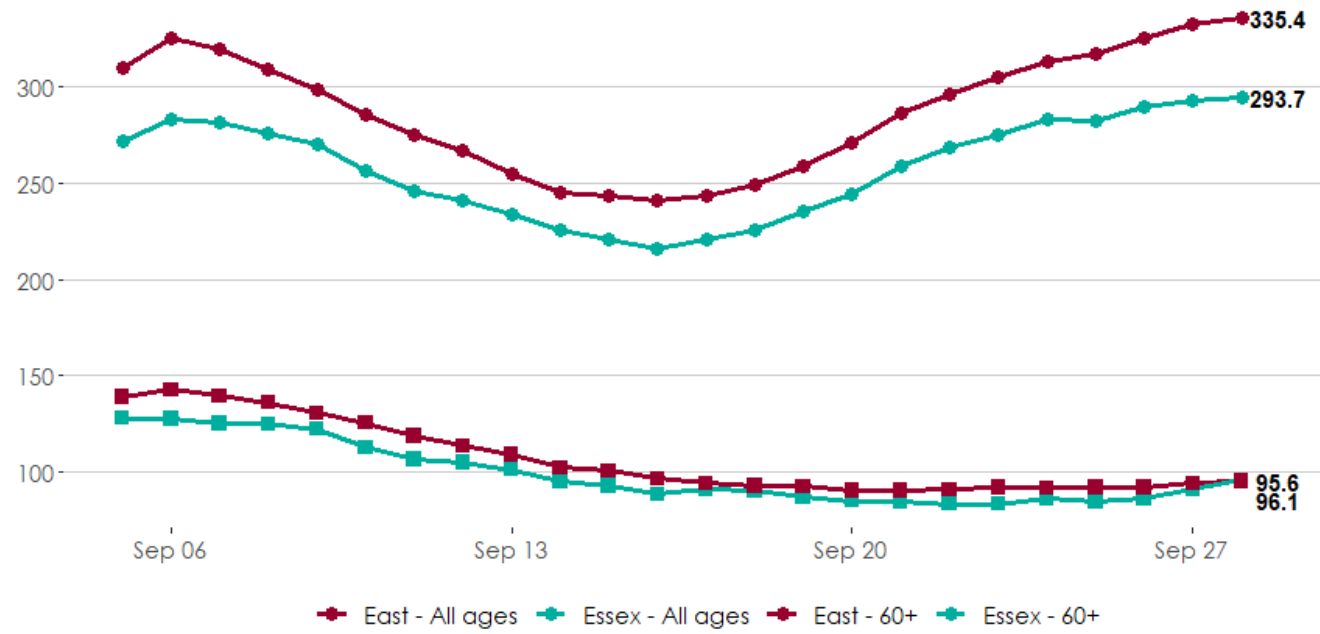
Essex County Council

Total tests, past 7 days
67,459, +6.2%
 (last week 63,550)

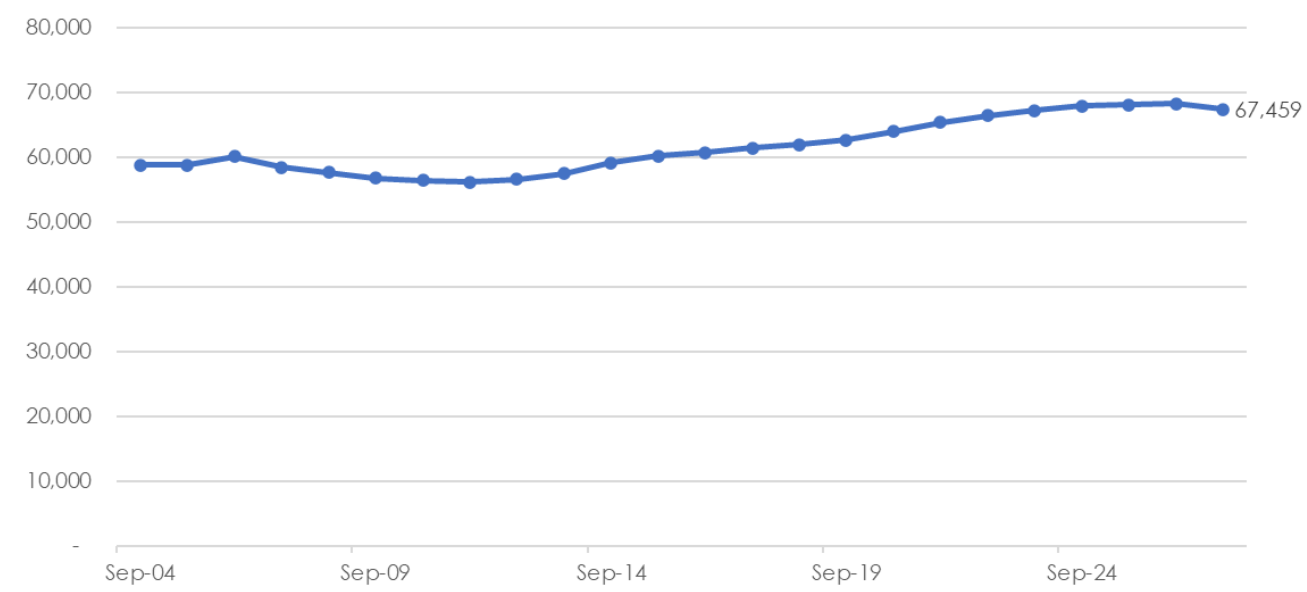
Case rate – all age
293.7, +13.7%
 (last week 258.4)

Case rate – 60+
96.1, +13.3%
 (last week 84.8)

Case rates per 100,000

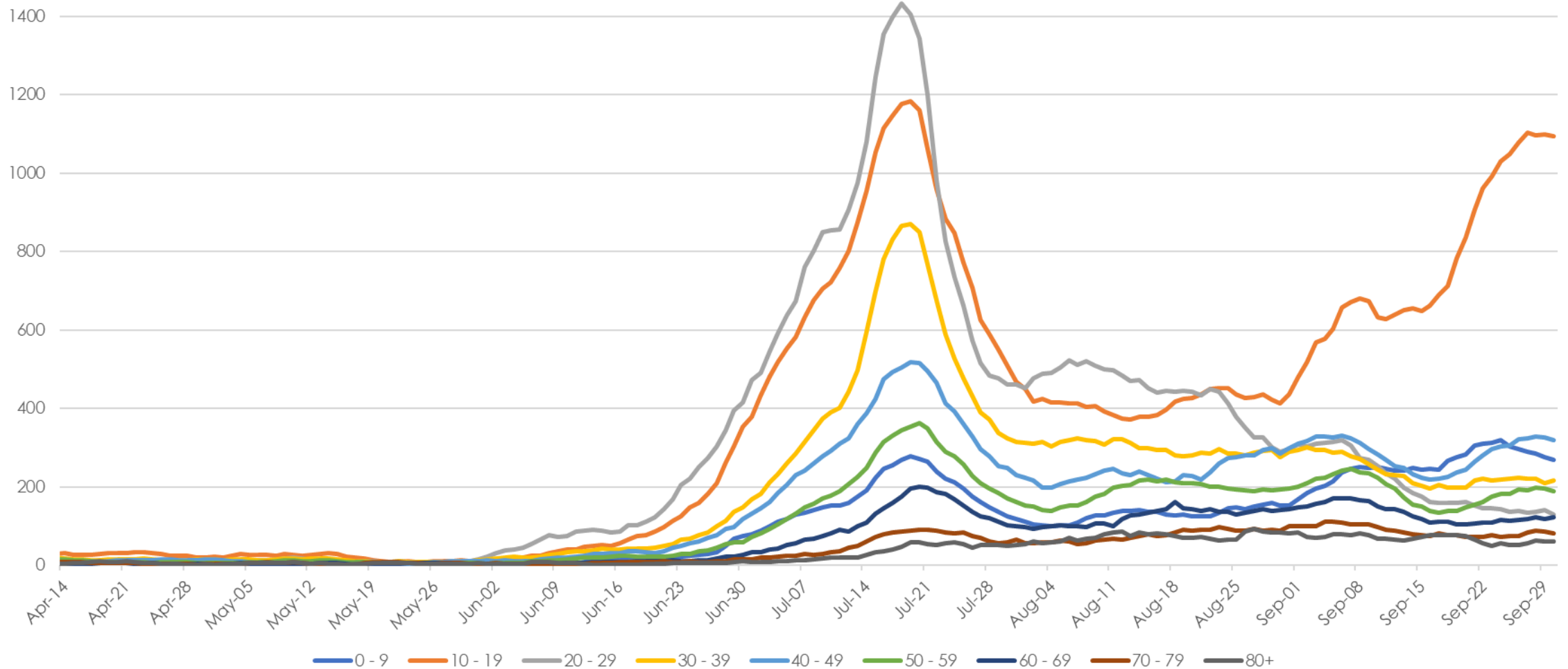


People PCR tested, 7 day rolling total



Age Specific Rates in Essex

7 day rolling case rates - Essex



Upper Tier Local Authority	Lower Tier Local Authority	Daily individuals tested per 100,000 population 7-day moving average ¹		Weekly percentage individuals test positive ¹²³		Weekly no. of newly confirmed cases	Weekly case rate per 100,000, All ages ⁴	7-day change in case rate, All ages ⁶	Weekly no. of newly confirmed cases 60+ yrs	Weekly case rate per 100,000 60+ yrs ⁵	7-day change in case rate 60+ yrs ⁶
Essex	Basildon	567.4	increase	6.2	decrease	462	246.3	5%	36	84.8	6%
	Braintree	655.3	increase	7.7	increase	563	367.8	41%	38	93.4	27%
	Brentwood	680.4	decrease	4.9	decrease	180	233	-2%	21	104.3	-13%
	Castle Point	515.4	decrease	6.4	increase	206	227.6	6%	31	107.8	29%
	Chelmsford	627.5	increase	7.3	increase	569	316.9	8%	33	73.8	10%
	Colchester	762.8	increase	7.4	increase	761	385.9	12%	56	127.9	0%
	Epping Forest	608.2	decrease	4.8	decrease	266	201.2	1%	31	91.9	-24%
	Harlow	547.2	decrease	6.8	increase	228	261.2	37%	27	148.3	170%
	Maldon	524	increase	5.4	decrease	134	204.9	-14%	20	93	11%
	Rochford	527.1	increase	8.3	increase	276	315	43%	22	84.8	0%
	Tendring	684.3	decrease	6.9	increase	484	328.5	22%	45	82.3	32%
Uttlesford	711.4	decrease	5.7	decrease	270	291.1	-4%	23	95.9	53%	
Southend-on-Sea	Southend-on-Sea	573.6	decrease	5.9	increase	430	235.3	12%	30	65.3	-23%
Thurrock	Thurrock	578.8	increase	5	decrease	349	198.8	-2%	20	62	-33%
East of England		678.2	increase	7.1	increase	21,820	333.7	17%	1,572	94.3	5%
England		696.2	increase	7.1	increase	192,258	340	12%	16,857	123.4	7%

		First dose uptake as of 02-Oct															
<i>areaName</i>	<i>Overall</i>	16-17	18-24	25-29	30-34	35-39	40-44	45-49	50-54	55-59	60-64	65-69	70-74	75-79	80-84	85-89	90+
<i>Basildon</i>	81.6	53.8	68	66.7	69.4	74.9	80.7	85.2	89.4	91.4	92.2	93.1	94.7	95.9	95.9	97	93.4
<i>Braintree</i>	86.7	64.3	76.3	73.1	75.8	80.2	85.3	88.5	91.9	92.8	93.6	94.6	95.8	96.9	97.3	96.8	95.3
<i>Brentwood</i>	84.1	57.8	73.3	69.2	72.2	75.8	81.5	86.2	90.4	92	92.3	93.7	95.6	96.7	96.8	96.2	97.9
<i>Castle Point</i>	86	55	73.9	69.5	73.3	80.5	83.6	87.7	91	92.1	93	94.2	95.6	96.9	97.1	95.9	93.5
<i>Chelmsford</i>	85.2	63.5	74	70.8	73.3	79.2	84.5	88	91.1	92.9	93.8	94.3	95.9	97.2	97.2	97.4	97.3
<i>Colchester</i>	81.3	67.5	62.2	63.5	71.6	76.7	83	86.9	90.7	92.5	93	93.7	95.9	96.6	97	97.4	96.1
<i>Epping Forest</i>	79.6	45.8	64.6	61.1	65.1	69.9	76.4	81.6	87.2	89.7	91.2	91.9	94	95.5	95.7	95	94.4
<i>Harlow</i>	76.1	46.8	63	61.2	62.6	67.6	74.4	80.1	85.6	88	89.3	91.2	93.1	94.5	95.1	95.2	93.2
<i>Maldon</i>	88.5	64.3	76.6	73.6	77.1	81.6	86.1	89.3	92.7	93.9	94.6	95.8	96.1	97.1	97.5	98	96.1
<i>Rochford</i>	88.2	66.9	78.1	74	77.2	83.2	87.6	90.2	93	92.5	93.9	94.9	96.2	97.1	96.7	96.8	94.6
<i>Tendring</i>	87.4	59.9	72.6	70.9	73.6	79.8	83.9	87.6	90.9	92.6	93.7	95.3	96.4	97.1	97.2	96.5	95.7
<i>Uttlesford</i>	87.8	68	78.7	75.9	76.9	82.3	86.6	89.3	91.6	92.7	94.5	95.2	96.2	96.9	97.5	97.9	97.2
<i>England</i>	79.3	55.2	66.2	64.3	66.7	71.1	76.6	82.1	86.5	88.9	90.6	92.5	94.6	95.6	95.7	95.7	94

- First dose uptake is lowest in Harlow (all ages), Epping 65-79 and 18-39 groups

- Similar pattern for second dose. Uptake lower in younger groups

		Second dose uptake as of 02-Oct															
<i>areaName</i>	<i>Overall</i>	16-17	18-24	25-29	30-34	35-39	40-44	45-49	50-54	55-59	60-64	65-69	70-74	75-79	80-84	85-89	90+
<i>Basildon</i>	75.6	13.3	55.6	57.2	62	68.6	75.9	81.1	86.5	89.1	90.2	91.3	93.1	94.7	94.7	95.5	91.8
<i>Braintree</i>	81.5	15.6	65.2	64	68.5	75	81.2	85.4	89.7	90.9	92.1	93.7	95	96.2	96.8	96	94.2
<i>Brentwood</i>	79.1	11.8	62.3	61.1	65.2	70.8	77.8	83.5	88.2	90.3	90.7	92.2	94.6	95.8	95.8	95.2	97
<i>Castle Point</i>	80.7	15.1	61.6	60.2	66.3	74.1	79	84	87.6	88.6	91.8	92.8	94.4	95.9	96	95	91.7
<i>Chelmsford</i>	80	15.6	62.9	62.4	66.5	73.8	80.6	85.1	88.9	91.3	92.4	93.1	95	96.6	96.7	96.6	96.3
<i>Colchester</i>	75.4	17	51.4	54.7	64.3	71.4	78.8	83.9	88.7	90.4	91	92.6	94.9	95.5	95.4	95.5	94.1
<i>Epping Forest</i>	74.3	11.8	53.5	52.4	57.5	64.5	71.4	77.7	84.6	87.1	88.3	90.4	93	94.8	94.3	93.4	92.3
<i>Harlow</i>	70.1	9.9	51.1	51.8	55.1	61.4	69.3	76.1	82.7	85.7	87	89.7	92.3	93.6	94.3	94.1	91.3
<i>Maldon</i>	83.7	17.9	64.9	63.5	69.1	76.2	81.9	87	91	92	93.1	94.9	95.3	96.6	97	97.5	94.5
<i>Rochford</i>	83.5	18.6	67.9	65.2	70	78.4	84	87.9	91.4	90.9	92.8	94.2	95.3	96.5	95.8	95.9	93.1
<i>Tendring</i>	82.3	14.3	59.7	60.3	65.5	73.6	79	83.5	88	90.3	92.3	94	95.3	96.1	96.3	95.4	94
<i>Uttlesford</i>	82.8	16	67.4	67.7	70.9	77.8	83.4	87.1	90	91.1	91.9	94.2	95.3	96.1	96.2	95.8	95.3
<i>England</i>	73.6	15.5	54.4	55.4	59.4	65.3	72	78.5	83.8	86.3	88.4	91.1	93.6	94.6	94.4	94.1	92.2

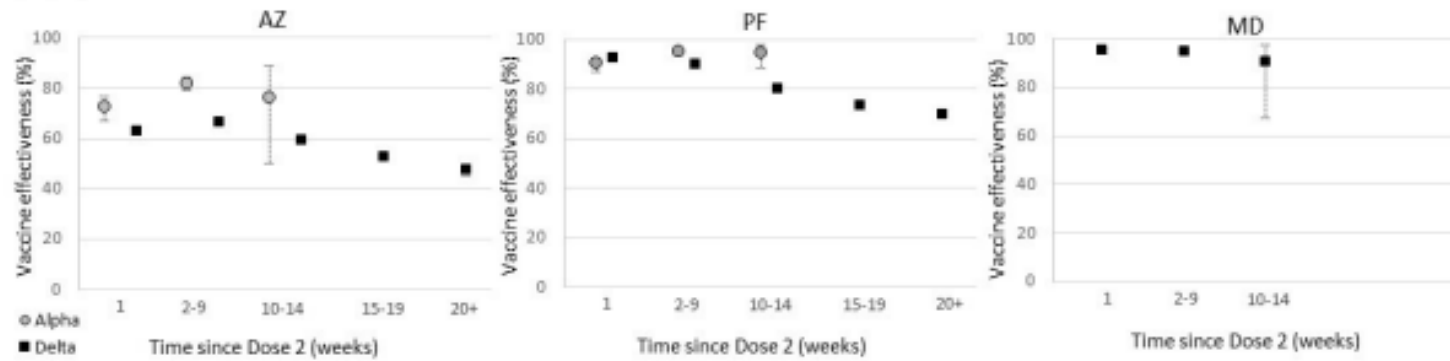
Table 7. Summary of evidence on vaccine effectiveness against different outcomes for the Delta variant

Outcome	Vaccine effectiveness*			All
	Pfizer-BioNTech Cominarty	AstraZeneca Vaxzevria	Moderna Spikevax	
Infection	75 to 85%	60 to 70%		60 to 85%
Symptomatic disease	80 to 90%	65 to 75%	90 to 99%	65 to 99%
Hospitalisation	95 to 99%	90 to 99%	95 to 99%	90 to 99%
Mortality	90 to 99%	90 to 95%		90 to 95%

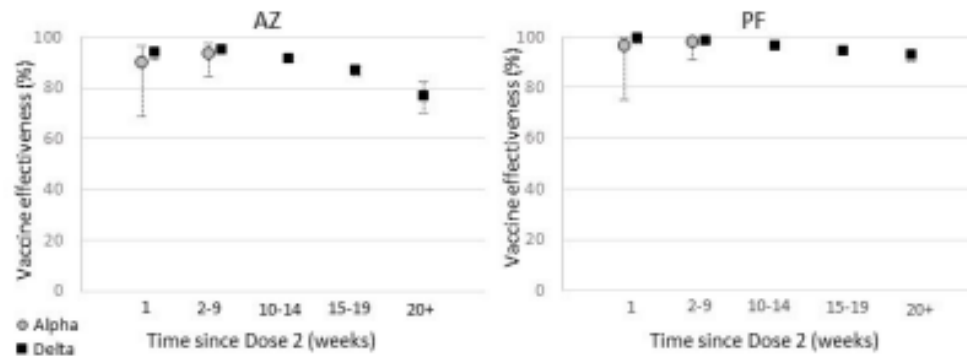
*Estimates of initial vaccine effectiveness in the general population after a 2-dose course. This typically applies for at least the first 3-4 months after vaccination. For some outcomes there may be waning of effectiveness beyond this point.

Figure 1. Vaccine effectiveness against Delta symptomatic disease, hospitalisation and death among individuals aged 16+ with two doses of Vaxzevria (AZ), Comirnaty (PF) or Spikevax (MD) in England and 95% confidence intervals.

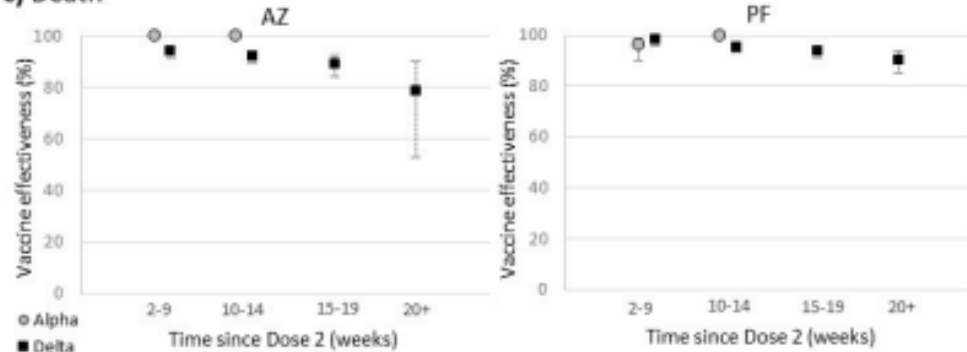
a) Symptomatic disease



b) Hospitalisation

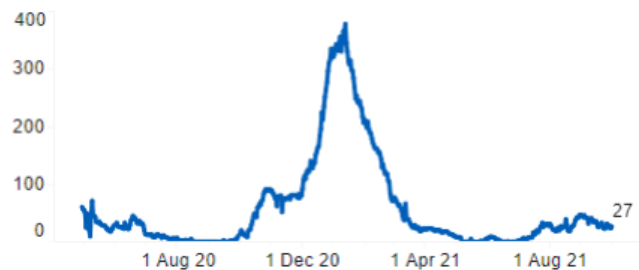


c) Death



Basildon (27 - 7 ITU)

Number of confirmed COVID-19 patients occupying beds as of 8am



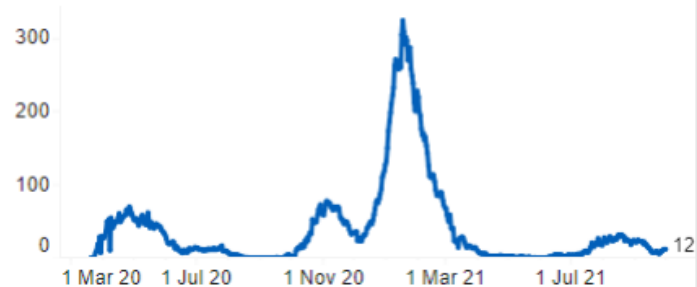
PAH (19 - 5 ITU)

Number of confirmed COVID-19 patients occupying beds as of 8am



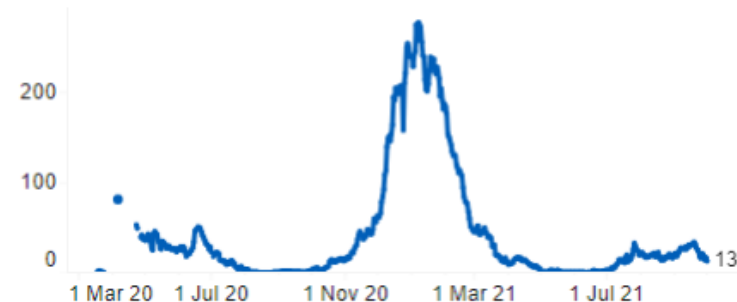
Colchester (12 - 2 ITU)

Number of confirmed COVID-19 patients occupying beds as of 8am



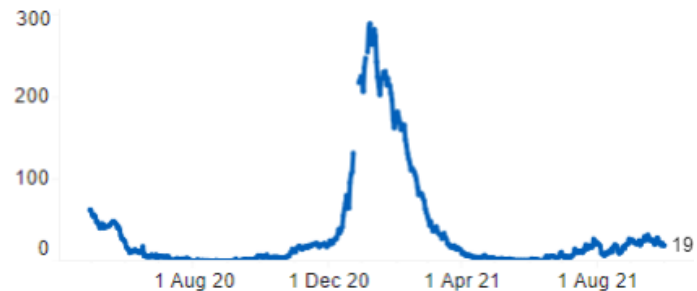
Southend (13 - 13 ITU*)

Number of confirmed COVID-19 patients occupying beds as of 8am



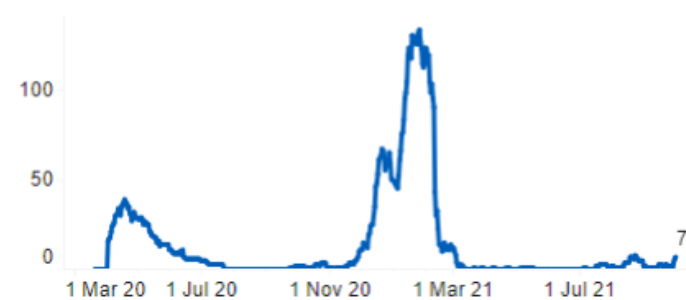
Mid Essex (19 - 2 ITU)

Number of confirmed COVID-19 patients occupying beds as of 8am

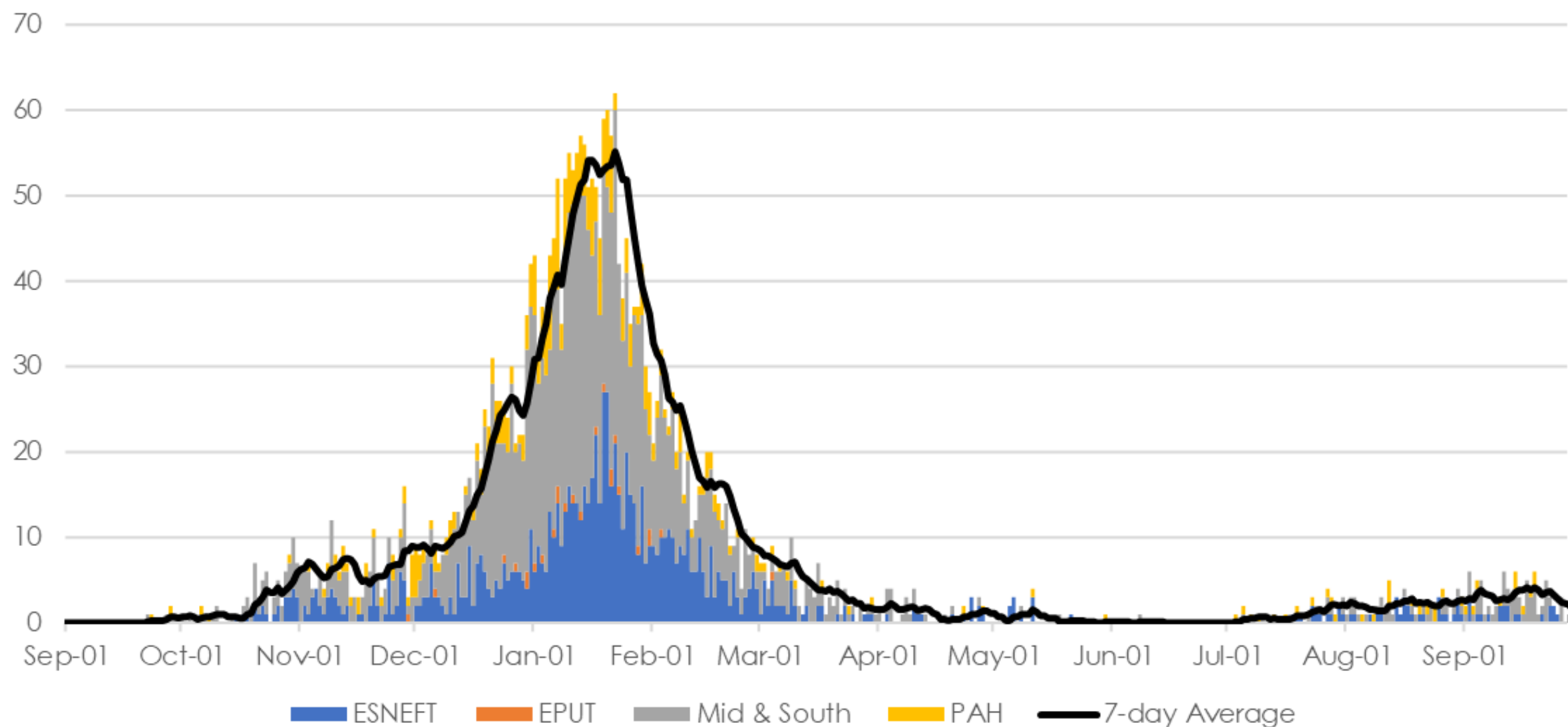


EPUT (7)

Number of confirmed COVID-19 patients occupying beds as of 8am



COVID-19 Hospital Deaths



Key issues

- Overall rates are fairly steady despite schools return, rates are falling slightly in older ages. Rising however in “parents” age group
- School outbreak system nationally not working, local systems are being rolled out. Aim is keep children at school by balance intervention and disease
- Twice weekly tests important as many have no symptoms after vaccine
- Hospital admissions are far lower than in last wave with particular reduction in older people
- It appears around 60% of those admitted are unvaccinated
- Vaccination remains the key effective measure, boosters have started but supply a little bumpy. Challenge giving Pfizer away from equipped sites
- School age vaccination well underway
- Some measures of social distancing remain and may help reduce flu
- Main concern remains emergence vaccine resistant variant