

LED Phase 4

Place Services and Economic Growth
Policy and Scrutiny Committee – July
2022



Phase 4 3 year LED programme:

Replaces 85,000 existing unreliable and obsolete luminaires with new.
Incorporates refresh of existing CMS.

Benefits:

- Increased colour recognition
- Low energy and carbon
- Reduced sky glow
- Reliable and low maintenance
- Fully monitored and controllable

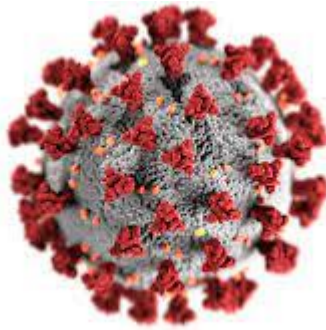


Sodium lighting – poor colour recognition, poor light control

New LED lighting – good colour recognition, good light control, enhanced feeling of safety



Phase 4 Context

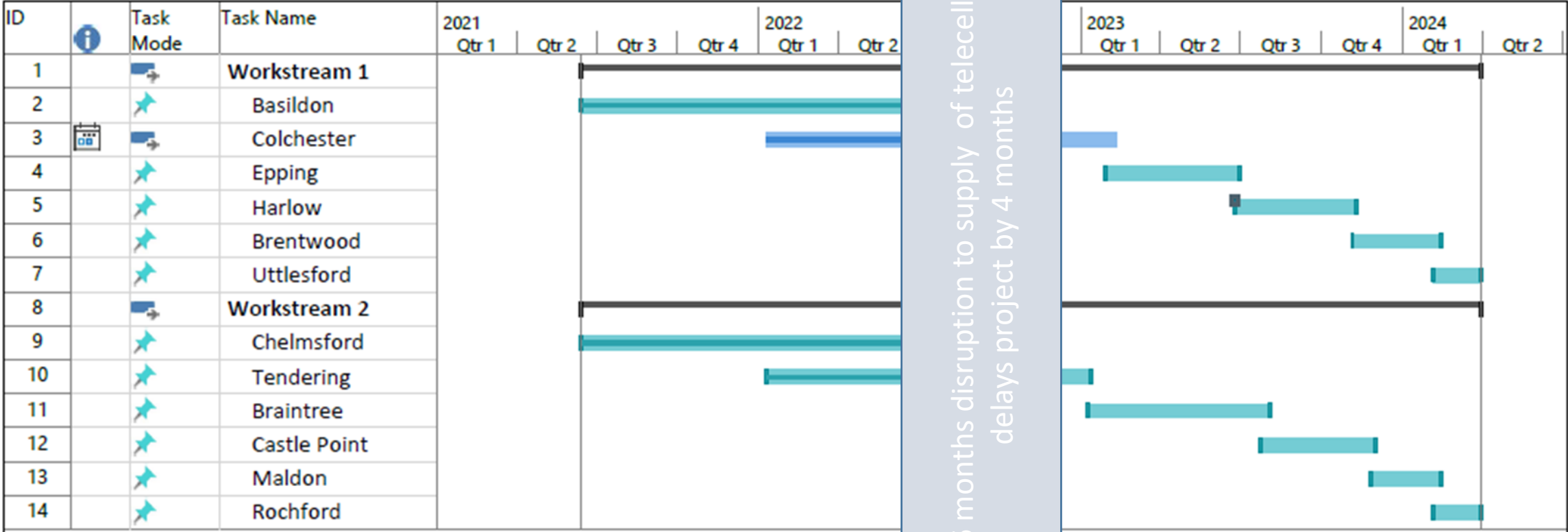


To date

- We have designed 60,078 (50,341) lighting points.
- Received 39,800 (34,350) lanterns
- Upgraded 34,271 (27,131) units to LED
- 30,071 (24,434) units through main programme
- 4,160 (2,697) units were upgraded through the maintenance and column replacement activities
- An approximate annual energy saving of over 80% has been achieved generating over 1000T of carbon savings
- This equates to an annual energy saving of £601,222 (£475,964) at the current rate of £0.17 per kWhr

- Brackets = end of financial year 21/22





Q&A

