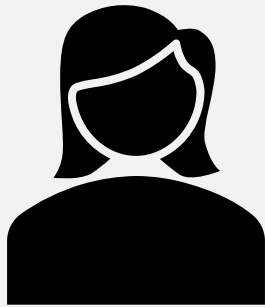


# ACL Essex

People and Families  
Policy and Scrutiny Committee

Appendix B

## Why ACL Exists



“I have some fantastic news to tell you.

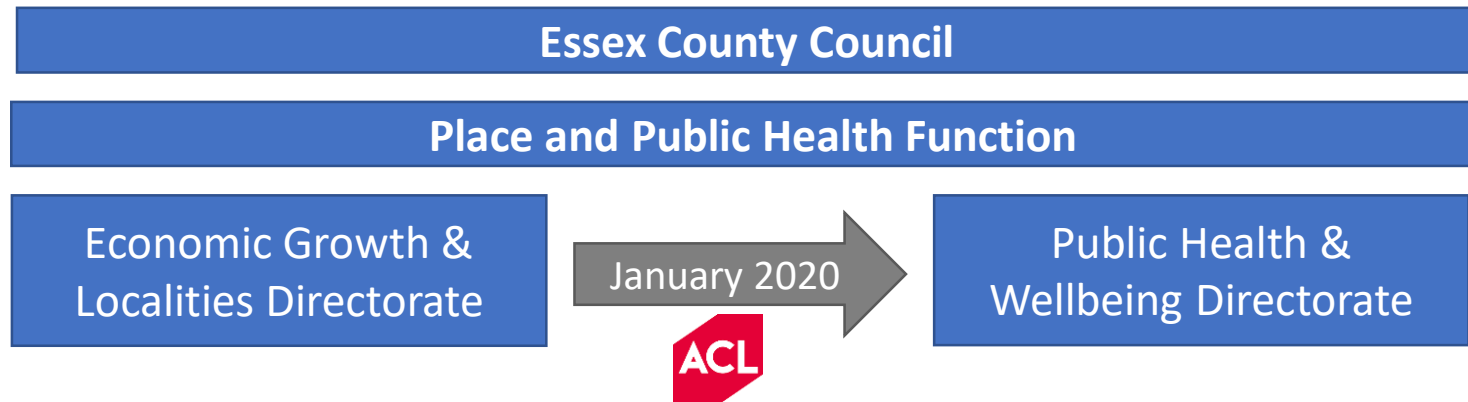
I have managed to secure my dream job supporting the local community with tackling loneliness and isolation. I am so excited to have this opportunity as it is something that I have experienced myself.

I have also secured a second job as bank staff supporting children and adults with disabilities. After taking redundancy I never believed that I would have a job where I can make a difference. I am still doing the computer course and am hoping that this will lead to a qualification.

I want to thank my tutor and the team who delivered the courses. Dreams are possible.”

# Organisational Design

ACL for a sustainable future



**New Service Design Launched Sept 2019**





**9 main centres and 130+ outreach sites in the community**



**36% of people said their health and wellbeing has improved**



**72% of people said that their course helped them make new friends**



**11,000 individual learners and 21,000 enrolments**



**298 new apprentices**



**23% of learners live in a disadvantaged postcode**



**67% of people said that their confidence had increased**



**10% of learners are on income-related benefits**



**97% pass rate on GCSEs with 76% achieving 9-4 grades**



**19% stated they are more confident of finding a better job**



**33% of learners had no or low previous qualifications**

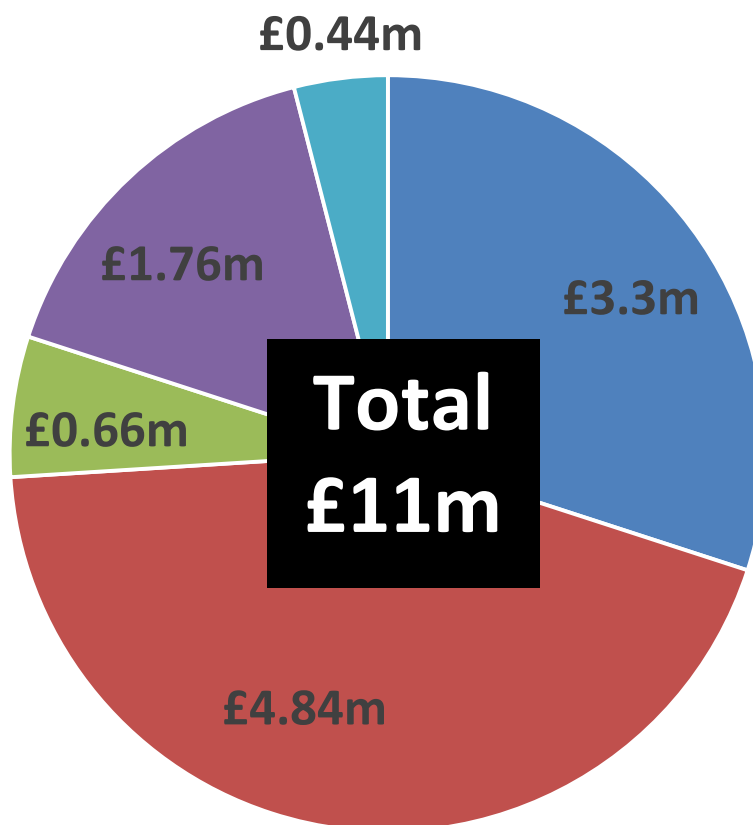


**66 volunteers**

Figures relate to full academic year 2018/19

# ACL Funding for Ages 19+

- ESFA Funding for accredited provision - "Leading to qualifications"
- ESFA Funding for non-accredited provision - "Community Learning"
- Apprenticeship funding
- Learner and employer fee income
- Other income to deliver learning



# ACL OFFER

**Working Lives**

**Social Mobility  
and Inclusion**

**Personal Development  
and Wellbeing**

## **Community learning (19+)**

**Family learning, health and wellbeing courses, mental health recovery (wellbeing) programme, employability, creative, fashion, languages, general interest , supported learning (Learning Difficulties)** courses either directly and through sub-contracted provision in communities

## **Accredited provision (19+)**

**Maths, English, Biology, ESOL, Access to HE, supported learning (learning difficulties) accreditation, digital skills, creative industries, accountancy, hair and beauty, teaching assistant (up to Level 4) and early years courses, sports massage, health and social care, law, counselling and management (including Early Years management)**

## **Apprenticeships (16-18 and 19+)**

**Early Years Educator, Residential Childcare, Supporting Teaching and Learning in Schools, Health and Social Care, Accountancy, Business Administration, Customer Service, Management**

## **Traineeships (16-19)**

Plan B project delivered by Youth Service – 16-24 provision

# Impact and Outcomes

Outcomes	Specific Examples	Specific Examples	Specific Examples
<b>Health &amp; Wellbeing</b>	Improved or maintained physical health	Improved or maintained mental health	Improved or maintained wellbeing
<b>Employment &amp; Skills</b>	Progression towards work	Gained a job, or a better job	Progression to a higher level of study
<b>Attitudes, Aptitudes, &amp; Confidence</b>	Improved confidence	Improved critical and creative thinking	Improved resilience
<b>Integration &amp; Inclusion</b>	Reduction in isolation or loneliness	Increase in integration	Strengthened communities
<b>Creativity &amp; Culture</b>	Increased participation in cultural opportunities	Production, exhibition or sale of a creative product	Contribution to community or regional culture
<b>Skills for Life's Transitions</b>	Improved parenting skills	Progression towards independent living	Increased capacity to support child's learning